



BIGBEN

PRODUCT DATA SHEET 03.23



3180

XXTREME GRIP GLOVE

DEFINING FEATURES

INCLUDES:

- High Dexterity
- Superior Specification Quality
- Nitrile Grip
- Tough, Close-Knit Liner

CONFORMS TO:

EN388:2016

RATING: 4121X

EN 388:2016



4121X

ADDITIONAL FEATURES/ INFORMATION:

Designed to provide the highest abrasion resistance possible in a **BIGBEN** Glove.

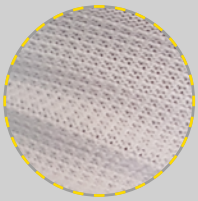


TAKING SAFETY TO NEW HEIGHTS

bigbensafety.com

 **Swiss Logo**
The Marque of Excellence

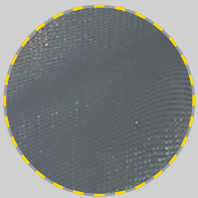
ADDITIONAL FEATURES



- 1 Woven Polyester Liner**
for reduced rigidity, greater flexibility and enhanced protective properties.



- 2 Product Rating, Code & Size**
clearly displayed.



- 3 Smooth Nitrile Palm**
for closer grip and increased resistance to puncturing and tearing.



- 4 Hemmed Wrist-ends**
to prevent fraying and maintain close-fit.



BIGBEN

bigbensafety.com

TAKING SAFETY
TO NEW HEIGHTS

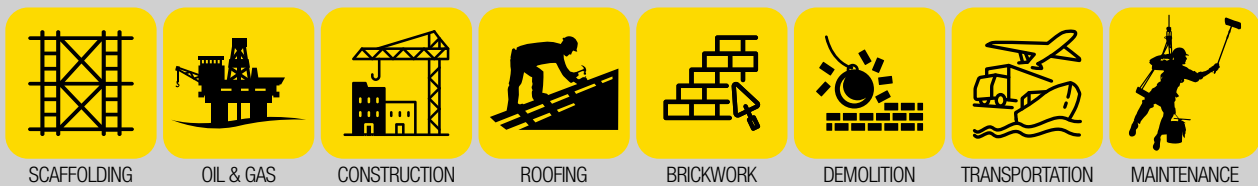


The Marque of Excellence

ORDERING INFORMATION

PART NO	SIZE	RATING	MATERIAL		PACK QTY (PAIRS)	CASE QTY (PAIRS)
			Palm	Liner		
PP-3180-M	Medium	4121X	Nitrile	Polyester	10	120
PP-3180-L	Large	4121X	Nitrile	Polyester	10	120
PP-3180-XL	XLarge	4121X	Nitrile	Polyester	10	120

SUITABLE INDUSTRIES



SCAFFOLDING

OIL & GAS

CONSTRUCTION

ROOFING

BRICKWORK

DEMOLITION

TRANSPORTATION

MAINTENANCE

TAKING SAFETY TO
NEW HEIGHTS



bigbensafety.com

DISTRIBUTED BY:

LEACH'S
Beacon Park, 228 Holme Lacy Road,
Hereford HR2 6BQ
Tel: 01432 346800 Email: sales@leachs.com
First for Safety www.leachs.com



 **Swiss
Logo**
The Marque of Excellence