

1 INSTRUCTIONS OF USE

LH-2904

LEACH'S BIGBEN® SCAFFCORROCLAMP

VERSION: 12/2019

These instructions are for the guidance of competent personnel who have received sufficient training to permit safe use of the equipment. These instructions in no way relieve the operative or supervisor or competent person of their responsibilities under any National or Local Government legal requirement. Users of this equipment must carry out their own Risk Assessment prior to use. This equipment should be subject to examination and testing at intervals not exceeding 6 months.

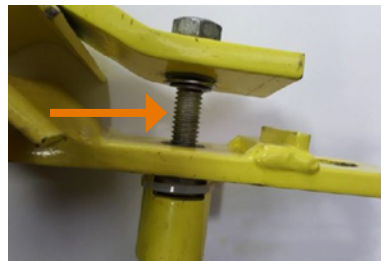
IMPORTANT

1. **DO NOT use POWER TOOLS to tighten or untighten the BIGBEN ScaffCorroClamp.. Only use a hand tool.**
2. **DO NOT over tighten the clamping screw / bolt.**
3. **DO NOT attach unauthorised lifting apparatus onto the BIGBEN ScaffCorroClamp.**
4. **DO NOT lower the BIGBEN ScaffCorroClamp from height at speed thus causing a hard impact on the ground when using a rope and wheel or Power lift. A controlled, slow descent is required for a soft landing.**
5. **Do not use the BIGBEN ScaffCorroClamp during adverse weather conditions. In particular, freezing conditions, electrical storms or high winds.**
6. **DO NOT exceed the SWL of 66kg.**
7. **ALWAYS inspect prior to use.**



Inspect the bolt and nut threads regularly and lubricate during use with SCAFFEZE as indicated.

Do not use the BIGBEN ScaffCorroClamp if any of the threads are corroded or damaged in any way.



The BIGBEN ScaffCorroClamp is designed to clamp together up to a maximum of SIX corrugated metal sheets for lifting and lowering, and in conjunction with suitable lifting equipment. Manual Handling Max 2 x No C.I Sheets per lift. Mechanical Handling Mx 6 x No C.I Sheets per lift. Recommended tighten to 28N/m - Max Torg 34 N/m

NEVER STAND DIRECTLY BELOW A LOAD BEING LIFTED OR LOWERED

If the equipment is being used in the UK all users must be familiar with the appropriate requirements under the Health & Safety at Work Act and we recommend familiarisation of the following publications:

SAFE USE OF LIFTING EQUIPMENT. Lifting Operations and Lifting Equipment Regulations 1998. Approved Code of Practice and guidance L113 HSE Books 1998 ISBN 978 0 7176 1628 2 (LOLER) www.hse.gov.uk/pubns/books/l113.htm

SAFE USE OF WORK EQUIPMENT. Provision and Use of Work Equipment Regulations 1998. Approved Code of Practice and guidance L22 (Third edition) HSE Books 2008 ISBN 978 0 7176 6295 1 www.hse.gov.uk/pubns/books/l22.htm

PROVIDING AND USING WORK EQUIPMENT SAFELY: A brief guide to the law Leaflet INDG291(rev1) HSE Books 2013 www.hse.gov.uk/pubns/indg291.htm

MANAGING HEALTH AND SAFETY: Five steps to success Leaflet INDG275 HSE Books 1998 www.hse.gov.uk/pubns/indg275.htm

BUYING NEW MACHINERY: A short guide to the law and your responsibilities when buying new machinery for use at work Leaflet INDG271(rev1) HSE Books 2011 www.hse.gov.uk/pubns/indg271.htm

WORKPLACE TRANSPORT SAFETY: An employers' guide HSG136 (Second edition) HSE Books 2005 ISBN 978 0 7176 6154 1 www.hse.gov.uk/pubns/books/hsg136.htm

WORKPLACE TRANSPORT SAFETY: A brief guide Leaflet INDG199(rev1) HSE Books 2013 www.hse.gov.uk/pubns/indg199.htm

HIRING AND LEASING OUT OF PLANT: Application of PUWER 98, regulations 26 and 27 MISC156 HSE Books 1998 www.hse.gov.uk/pubns/9204.pdf

RISK MANAGEMENT WEB PAGES: www.hse.gov.uk/risk/

1 BIGBEN® SCAFFCORROCLAMP PUSH WASHER REPLACEMENT

LEACH'S INSTRUCTIONS

When replacing the 'Push Washer' on your BIGBEN SCAFFCORROCLAMP, always remember to clean the thread of the bolt first and check that you have the 'push' washer the right way up - 'proud side up' (as shown in Fig.1).

Ensure 'Push' Washer is placed on the bolt after the standard washer, the correct way round (as shown in Fig.2).

Using oversized tube, TAP the Push Washer down evenly until it locates firmly against the washer on the front plate of the clamp - as shown below.

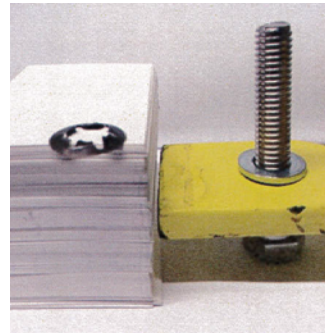


FIG 1

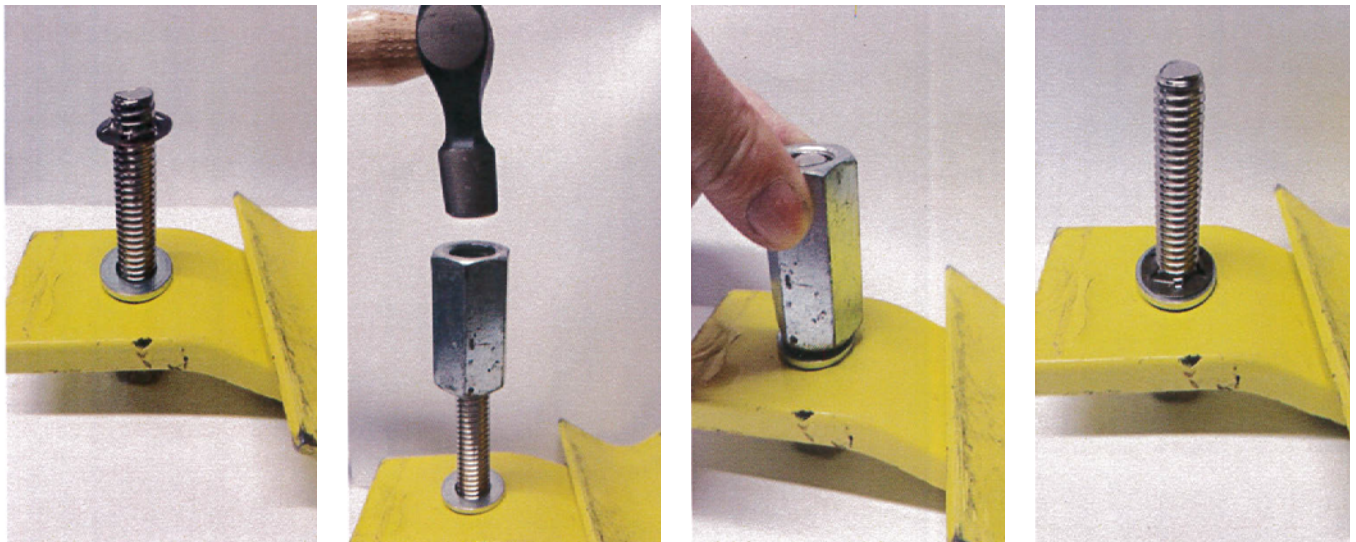


FIG 2



COMPLETE BOLT
ASSEMBLY