



PRODUCT DATA SHEET 03.23



3301

MILLER H500 2 POINT SAFETY HARNESS

DEFINING FEATURES

INCLUDES:

- Front & rear anchorage points
- Resettable lanyard keepers and SRL web link
- High visibility stitch pattern
- Fall impact indicators
- Water-repellent webbing

CONFORMS TO:

EN361

Tested and approved for users up to 140kg.

IMPROVED LEG STRAP DESIGN:

H design leg straps go around the top of the leg as opposed to up through the groin, reducing the effects of trauma in the event of a fall from height.



FIRST FOR SAFETY

ADDITIONAL FEATURES



- 1 Front & Rear Attachment Points



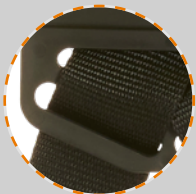
- 2 Fall Impact Indicators
To aid quick on the spot inspection.



- 3 High Visibility Webbing
For enhanced on-site safety.



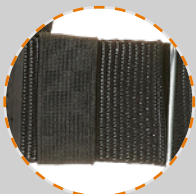
- 4 Adjustable Front, Side & Leg Straps
For better allround fitting.



- 5 Anti-tangle Central Plates
For added stability.



- 6 Integral Tool Tether Loops



- 7 Elasticated Middle and Side Webbing
For enhanced freedom of movement.



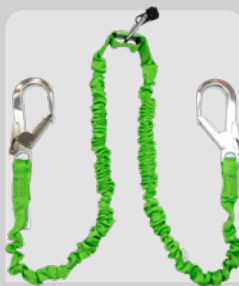
FIRST FOR QUALITY

**COMPATIBLE
ATTACHMENTS
& ACCESSORIES**

FALL ARREST LANYARDS



FP-3067S



FP-3067T



FP-3625



FP-6495U



FP-6496U

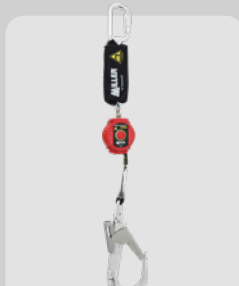


FP-4495

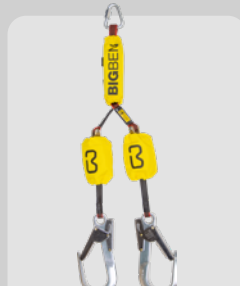
RETRACTABLE LANYARDS



FP-3638

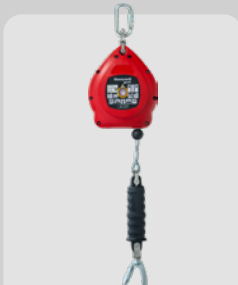


FP-3312

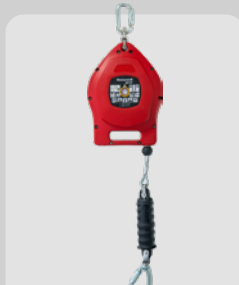


FP-7720A

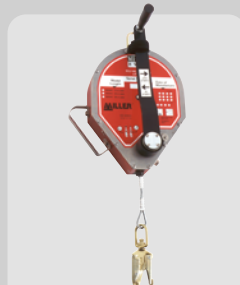
FALL ARREST BLOCKS



FP-3320-9



FP-3320-15



FP-4615

ATTACHMENTS

ACCESSORIES



Leather Shoulder
Protector Pad
FP-3134



Deluxe
Harness Bag
FP-4482



Harness Backpack
FP-4483



Suspension
Trauma Strap
FP-3652

FIRST FOR INNOVATION

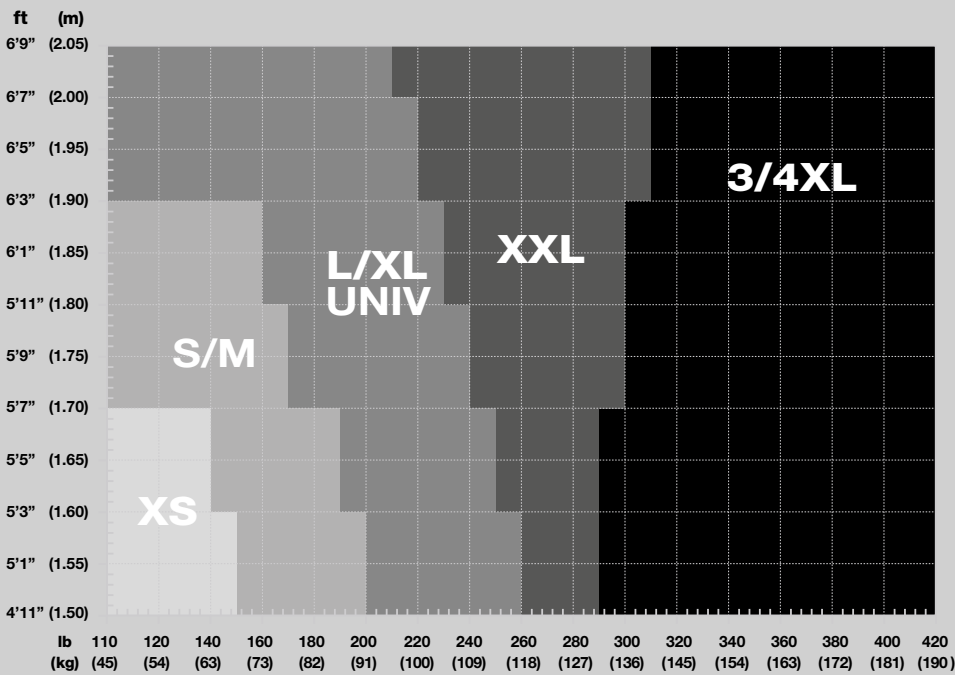
01432 346800 | sales@leachs.com | www.leachs.com

ACCESSORIES


ORDERING INFORMATION

Part No	Standard Buckle	Quick Release Buckle	1 Point	2 Point	Comfort Padding	Size
FP-3301-S	<input checked="" type="radio"/>	<input type="radio"/>	<input type="radio"/>	<input checked="" type="radio"/>	<input type="radio"/>	S (Size 1)
FP-3301-M	<input checked="" type="radio"/>	<input type="radio"/>	<input type="radio"/>	<input checked="" type="radio"/>	<input type="radio"/>	M (Size 2)
FP-3301-L	<input checked="" type="radio"/>	<input type="radio"/>	<input type="radio"/>	<input checked="" type="radio"/>	<input type="radio"/>	L (Size 3)


SIZING CHART



SUITABLE INDUSTRIES




SCAFFOLDING




OIL & GAS



CONSTRUCTION




ROOFING




BRICKWORK



DEMOLITION



RESCUE



TRANSPORTATION



MAINTENANCE

FIRST FOR SOLUTIONS

01432 346800 | sales@leachs.com | www.leachs.com