



# PRODUCT DATA SHEET 03.23



FP-3300

## MILLER H500 1 POINT SAFETY HARNESS

### DEFINING FEATURES

#### INCLUDES:

- Rear anchorage point
- Resettable lanyard keepers and SRL web link
- High visibility stitch pattern
- Fall impact indicators
- Water-repellent webbing

#### CONFORMS TO:

##### EN361

Tested and approved for users up to 140kg.

#### IMPROVED LEG STRAP DESIGN:

H design leg straps go around the top of the leg as opposed to up through the groin, reducing the effects of trauma in the event of a fall from height.



## FIRST FOR SAFETY

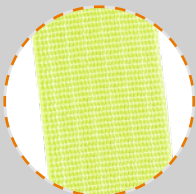
# ADDITIONAL FEATURES



1 **Rear Attachment Point**



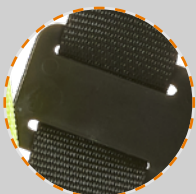
2 **Fall impact indicators**  
For hassle-free inspection.



3 **High Visibility Webbing**  
For easy inspection.



4 **Adjustable side strap**  
For better ergonomic fit.



5 **Antitangle Centre Plates**



6 **Integral Tool Tether Loops**



7 **Elasticated Chest Strap**



## FIRST FOR QUALITY

01432 346800 | sales@leachs.com | www.leachs.com

**COMPATIBLE  
ATTACHMENTS  
& ACCESSORIES**

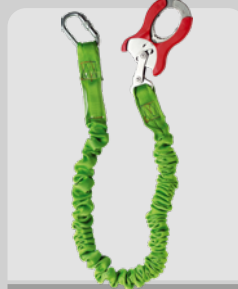
**FALL ARREST LANYARDS**



FP-3067S



FP-3067T



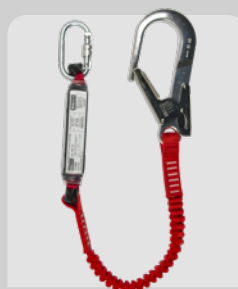
FP-3625



FP-6495U



FP-6496U



FP-4495

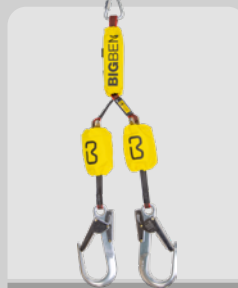
**RETRACTABLE LANYARDS**



FP-3638

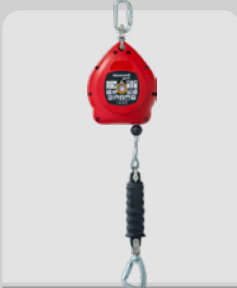


FP-3312



FP-7720A

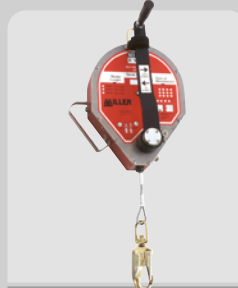
**FALL ARREST BLOCKS**



FP-3320-9



FP-3320-15



FP-4615

**ATTACHMENTS**

**ACCESSORIES**



Leather Shoulder Protector Pad  
FP-3134



Deluxe Harness Bag  
FP-4482



Harness Backpack  
FP-4483



Suspension Trauma Strap  
FP-3652

**FIRST FOR INNOVATION**

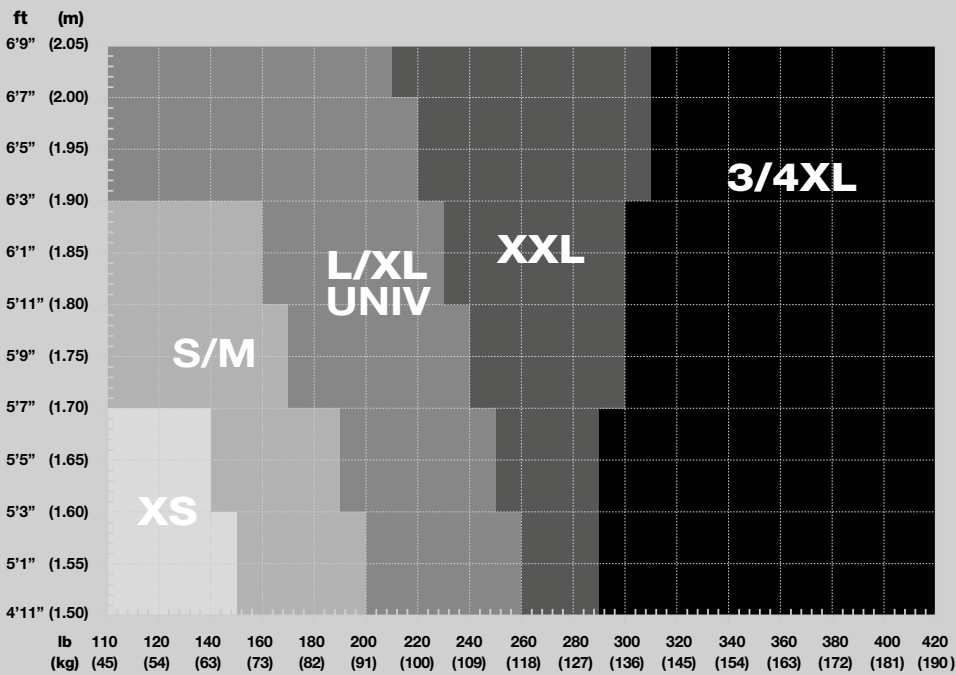
01432 346800 | sales@leachs.com | www.leachs.com

ACCESSORIES

# ORDERING INFORMATION

Part No	Standard Buckle	Quick Release Buckle	1 Point	2 Point	Comfort Padding	Size
FP-3300-S	<input checked="" type="radio"/>	<input type="radio"/>	<input checked="" type="radio"/>	<input type="radio"/>	<input type="radio"/>	S (Size 1)
FP-3300-M	<input checked="" type="radio"/>	<input type="radio"/>	<input checked="" type="radio"/>	<input type="radio"/>	<input type="radio"/>	M (Size 2)
FP-3300-L	<input checked="" type="radio"/>	<input type="radio"/>	<input checked="" type="radio"/>	<input type="radio"/>	<input type="radio"/>	L (Size 3)

## SIZING CHART



## SUITABLE INDUSTRIES



FIRST FOR SOLUTIONS

01432 346800 | sales@leachs.com | www.leachs.com