



PRODUCT DATA SHEET 06.23



6
1
4
4

COUPLER PLATE

DEFINING FEATURES

- Very sturdy design.
- Suitable for any construction related substrate
- Designed to protect fragile surfaces

MADE IN



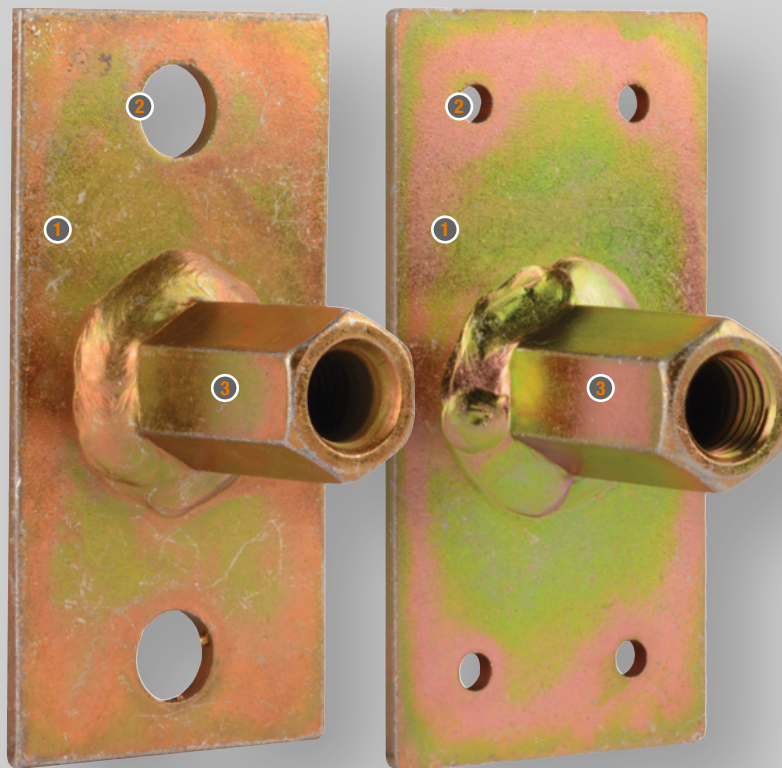
BRITAIN



FIRST FOR SAFETY

ADDITIONAL FEATURES

- ❶ **Manufactured from 4mm steel and a hex connector,**
with a BZP finish to ensure durability.
- ❷ **Available with either 13mm or 6mm fixing holes,**
depending on your specific application.
- ❸ **48mm M16 threaded connector**
for secure and dependable connection point.



FIRST FOR QUALITY

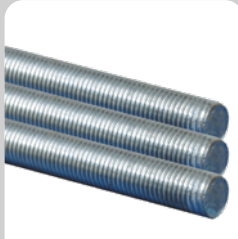
☎ 01432 346800 | ✉ sales@leachs.com | 🌐 www.leachs.com

COMPATIBLE ATTACHMENTS & ACCESSORIES

DESIGNED FOR USE WITH:



AF-6140



AF-6116



AF-6100

INSTALLATION: MASONRY



PT-4758

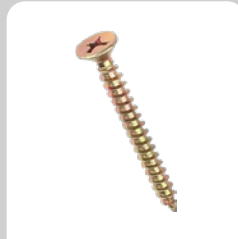


AF-6122T

WOOD



PT-1903



YE-9055

OFTEN PURCHASED WITH:



PT-4000



PT-4001



AF-6136



AF-6176



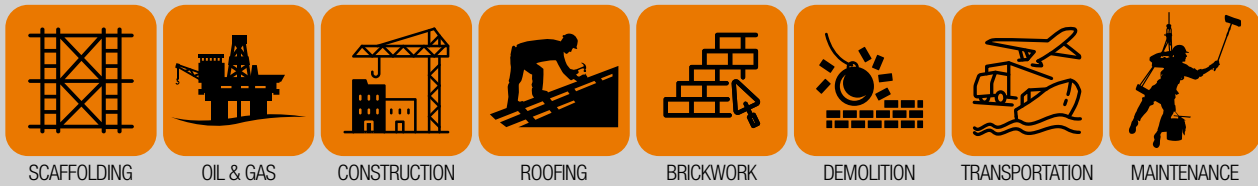
AF-6178

FIRST FOR INNOVATION

ORDERING INFORMATION

PART NO	TYPE	DIMENSIONS	FIXING HOLE SIZE	MATERIAL	PLATE THICKNESS	THREAD SIZE	CONNECTOR LENGTH
AF-6144	Masonry	60 x 120mm	6mm	BZP Steel	4mm	16mm	48mm
AF-6144W	Wood	60 x 120mm	13mm	BZP Steel	4mm	16mm	48mm

SUITABLE INDUSTRIES



FIRST FOR SOLUTIONS

01432 346800 | sales@leachs.com | www.leachs.com