

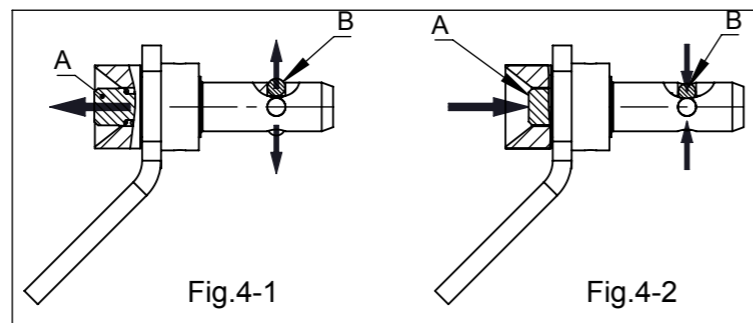
The AT024 system rules of usage

The AT024 anchor can be used for anchoring of a personal fall protection equipment conform to EN363 standard. The equipment can be a restraint or fall arrest type. In case of personal restraint equipment the basic rule is that the distance between anchor and risk zone is not less than length of the connection subsystem. The recommended distance from anchor device to risk zone shall be not less than 2 m. This allows the user to operate near the dangerous zone using a standard lanyard of 2 m length attached to a harness. If the anchor is placed closer to risk zone or a retractable block is engaged as a personal equipment, the user works under "fall arrest" mode. For this case the user have to be equipped with full-body harness and connection-energy absorbing subsystem which limits fall arrest load below 6kN. Moreover, a fall arrest distance must be taken into account in this case. A space, which is a sum of fall arrest distance (calculated on the base of instructions applied components) and extra 1m safety distance, free of any obstacles must be provided under place of potential fall. An evacuation plan have to be provided as well.

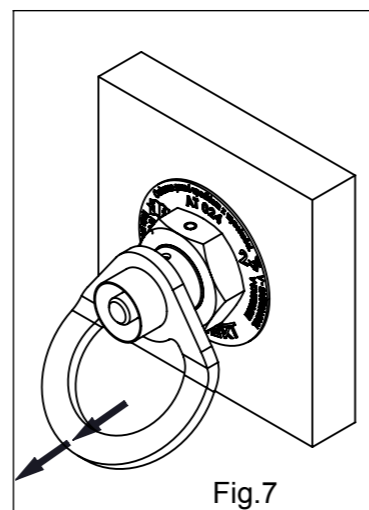
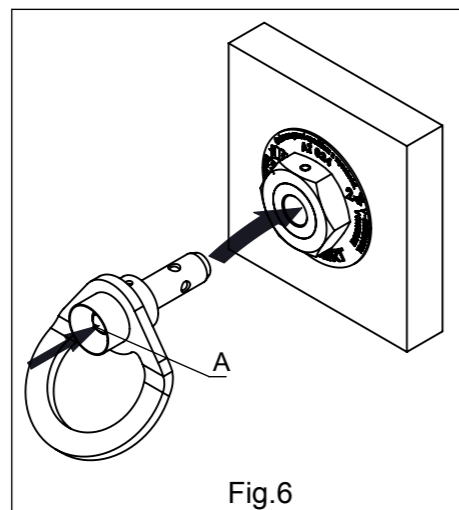
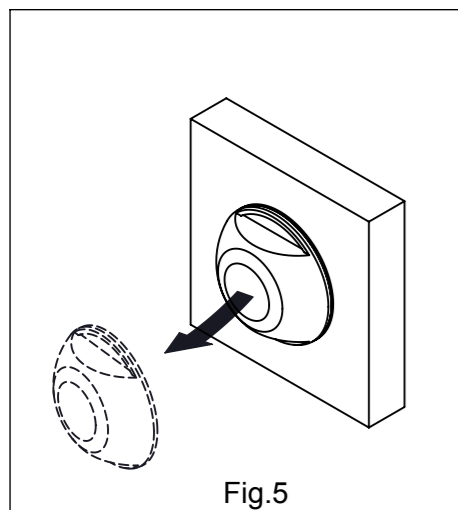
CAUTION: The AT024-A removable eyebolt can be used only with slots of the AT024 system, which are properly marked on it's informative label which is described into this instruction manual.

AT024-A eyebolt operation

The push button "A" (fig.4), when is released, automatically moves to position presented on the fig. 4-1 and the locking balls "B" are moved out of the bolt and locked in this position. After the push button "A" is driven in the body, the locking balls "B" are unlocked and can move inside the bolt - fig.4-2.



AT024-A connection to the slot and anchoring of a personal fall arrest equipment to eyebolt

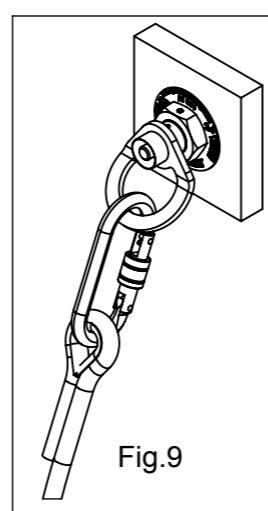
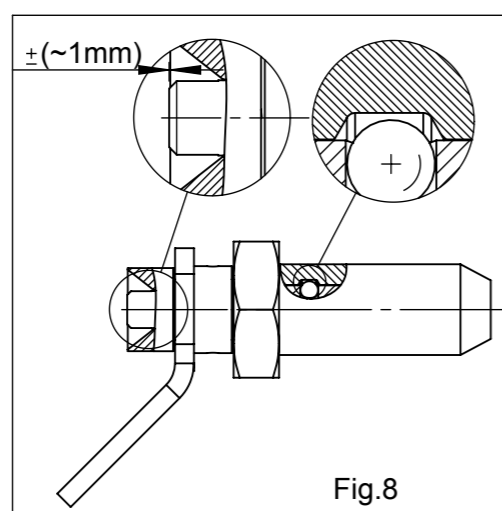


1. Take off the socket cup from the socket - fig. 5.

2. Keeping the push button "A" moved in, insert the eyebolt into opening of a slot and next release the push button - fig. 6.

3. Pull the anchoring eye firmly at least twice in order to check the connection reliability - fig.7. Check position of the front plane of the push button which should be about frontal plane of the housing - fig. 8.

4. Connect a personal fall protection equipment to the eyebolt's anchoring bow with the aid of a connector conform to EN362 - fig. 9.



Maximum lifetime of the product

The AT024-A removable eye-bolt lifetime is unlimited, provided that is in good technical condition and works correctly.

The basic rules concerning safety

- The use of the anchor point system AT024 have to be in accordance with the instruction for use of personal equipment components and the following standards: EN 361, EN353-2; EN355; EN360, EN362.
- Personal protective equipment shall only be used by a person trained and competent in its safe use.
- Personal protective equipment must not be used by a person with medical condition that could affect the safety of the equipment user in normal and emergency use.
- A rescue plan shall be in place to deal with any emergencies that could arise during the work.
- It is forbidden to make any alteration or addition to the equipment without the manufacturer's prior written consent. Any repair shall only be carried out by equipment manufacturer or his certified representative.
- Protective equipment shall not be used outside its limitation or for any purpose other than that for which it is intended.
- Before use ensure about the compatibility of items of equipment assembled into fall protection system. Periodically check connecting and adjusting of the equipment components to avoid accidental loosening or disconnecting of the components.
- It is forbidden to use combination of items of equipment in which the safe function of any one item is affected by or interferes with the safe function of another.
- Before each use of protective equipment it is obligatory to carry out a pre-use check of the equipment, to ensure that it is in serviceable condition and operates correctly. During pre-use check inspect all elements in respect of any damages, excessive wear, corrosion, abrasion, cutting or incorrect acting. Make sure that all components constituting protective system work together correctly as a set.
- After every 12 months of utilization, protective equipment must be detaily inspected. The periodic inspection must be carried out by a competent person, which gained proper knowledge in the product inspection and which is trained by equipment producer or by authorized producer representative. During periodical inspection all elements shall be checked in respect of any damages, excessive wear, corrosion, abrasion, cutting or incorrect acting. The equipment's marking legibility must be checked during periodical inspection too. In case of some complex equipment, e.g. some types of retractable fall arresters, the annual inspection can be carried on only by the manufacturer or his authorized representative. As a result of periodical inspection carried out, a next inspection date should be established. Regular periodic inspections are the essential for equipment maintenance and the safety of the users which depends upon the continued efficiency and durability of the equipment.
- If the product is re-sold outside the original country of destination, the reseller shall provide instructions for use, for maintenance, for periodic examination and for repair in language of the country in which the product is to be used.
- Protective equipment must be withdrawn from use immediately when any doubt arise about its condition for safe use and not used again until confirmed in writing by equipment manufacturer or his representative after carried out the detailed inspection.
- Protective equipment must be withdrawn from use immediately when it has been used to arrest a fall and be submitted detailed inspection by the equipment manufacturer or his representative in order to ensure its serviceable condition which must be confirmed in written.
- A full body harness conform to EN 361 standard is the only acceptable body holding device that can be used in a fall arrest system. In full body harness use only attachment points marked with capital letter "A" to attach a fall arrest system.
- The anchor device or anchor point for the fall arrest system should always be positioned, and the work carried out in such a way, as to minimise both the potential for falls and potential fall distance. If possible, the anchor device /point should be placed above the position of the user. The shape and construction of the anchor device/point shall not allowed to sel-acting disconnection of the equipment. It is recommended to use a certified and marked anchor devices complied with EN 795.
- It is obligatory to verify the free space required beneath the user at the worplace before each occasion of use the fall arrest system, so that, in the case of fall, there will be no collision with the ground or other obstacle in the fall path. The required value of free space should be taken from instruction manual of used equipment.
- There are many hazards that may affect the performance of the equipment and corresponding safety precautions that have to be observed during equipment utilization, especially: - trailing or looping of lanyards or lifelines over sharp edges; - any defects like cutting, abrasion, corrosion; - climatic exposure; - pendulum falls; - extremes of temperature; - chemical reagents; - electrical conductivity.
- Protective equipment must be transported in a package (e.g. bag made of moisture-proof textile or foil bag or cases made of steel or plastic) to protect it against damage of moisture.
- The equipment can be cleaned without causing adverse effect on the materials in the manufacture of the equipment. Plastic or metal parts can be cleaned only with water. When the equipment becomes wet, either from being in use or when due cleaning, it shall be allowed to dry naturally, and shall be kept away from direct heat. In metal product some mechanic parts (spring, pin, hinge, etc.) can be slightly lubricated to ensure better operation. Other maintenance and cleaning procedures should be adhered to detailed instructions stated in the manual of the equipment.
- Protective equipment should be stored loosely packed, in well-ventilated place, protected from direct light, ultraviolet degradation, damp environment, sharp edges, extreme temperatures and corrosive or aggressive substances.