

M20W

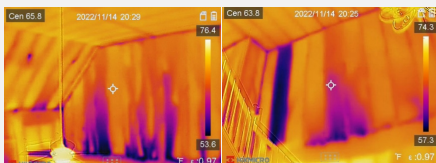
Advanced thermal imaging camera with full function analysis



VISIT OUR WEBSITE

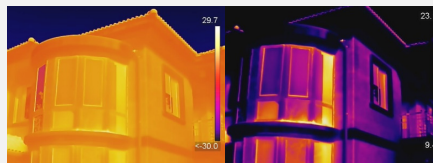
Fixed Focus and wide FOV cameras

Fixed focus with wider angle FOV makes M20W great for scanning walls, floors, facades for items that typically present themselves on a larger scale including water leaks, insulation issues, air infiltration.



1-Tap Level & Span

Quickly highlights the area of the image you are interested in by narrowing the span with one tap on the **3.5" LCD touchscreen**, instantly improving image contrast and highlighting potential problems.



Auto Level & Span

Manual / 1-Tap Level & Span

Interchangeable Battery System

Includes **2 interchangeable Li-ion batteries** and a dual bay charger to provide you with **up to 12 hours** of operation. You can stay powered up for even the longest inspections.



2 interchangeable Li-ion batteries



On-camera Analysis

Offers 17 measurement rules, 7 color alarm palettes and 4 image modes for powerful on-camera analysis.



Camera Interface

Intuitive 3.5" LCD Touch Screen or interactive buttons to easily navigate to any function. Use either or both!



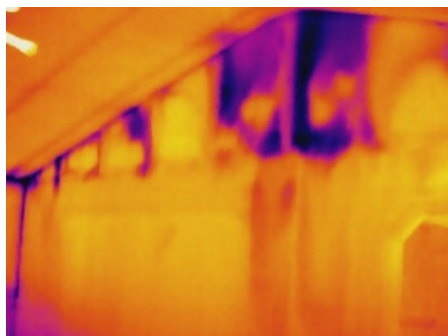
Image Annotations

Leave text or audio annotations within the images instead of taking notes by hand, helping to improve inspection efficiency and productivity.

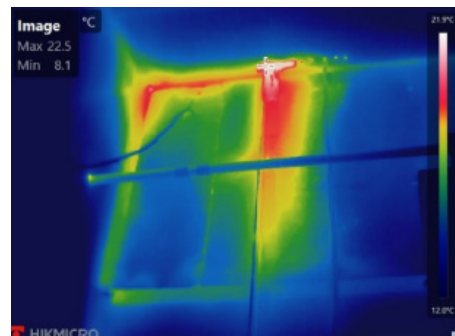
APPLICATIONS



Check Underfloor Heating



Check Building Insulation



Check facades for items

WHAT'S IN THE BOX



- Thermal Imager with Wrist Strap
- Interchangeable and Rechargeable Li-ion Batteries (x2)
- Power Supply for Battery Charger
- Two-bay Battery Charger
- International Use Plugs (US/EU/UK/AU) for Power Supply (x4)
- USB 2.0 A to USB Type-C Cable
- Hard Carrying Case
- Calibration Certificate / Quick Start Guide
- 16GB Micro SD card(M10/M20/M20W) / 64GB Micro SD card(M30)

OPTIONAL ACCESSORIES



– Additional batteries –
E097-13-1S1P26650



– Pouch –
HM-SP01-POUCH



– Replacement Charger –
HM-5202ZC

Model No	M20W	
Infrared Image	IR Resolution	256 × 192 (49, 152 pixels)
	NETD	< 40 mK (@ 25 °C, F#=1.0)
	Image Frequency	25 Hz
	Field of View (FOV)	50° × 37.2°
	Minimum Focus Distance	0.5 m (1.64 ft)
	Focus Mode	Focus Free
Image Display	Visual Camera	3264 × 2448 (8 MP)
Measurement and Analysis	Object Temperature Range	-20 °C to 550 °C (-4 °F to 1022 °F)
	Accuracy	Max (±2°C/3.6°F, ±2%), for the ambient temp. 15°C to 35 °C (59 °F to 95 °F) and object temp. above 0 °C (32°F)
General	Wi-Fi	802.11 b/g/n (2.4 GHz and 5 GHz)
	Battery Operating Time	Approx. 6 hours

- HIKMICRO Thermography
- info@hikmicrotech.com
- hikmicro_thermography
- support@hikmicrotech.com
- HIKMICRO Thermography
- HIKMICRO

