

EUROPEAN STONE OFFERINGS



MATERIAL
BESPOKE STONE + TILE

Explore European Stones

Bring a range of stunning and unique natural stones into your home with MATERIAL's new European Stone Offerings. Choose from the dark and elegant Pierre Noir, the energetic and dynamic Medici, the clean and timeless Porto White, or one of three other distinctive natural stone colors.

Available in several tile sizes, these stone options add a European flair to any project, and with a stateside inventory maintained, can suit any project timeline.



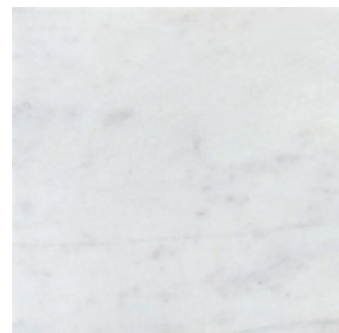
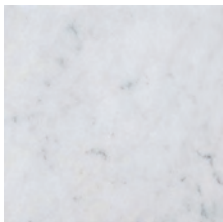
Alba Vera



Available Tile Sizes: 12x12x³/₈", 12x24x³/₈" 18x18x³/₈"
Finish: Honed

Made from premium quality white marble, this tile features beautiful swirling grey patterns that add depth and character to its sleek surface. With its classic design and versatile size options, it is perfect for enhancing any style of home décor.

Choose Alba Vera Tile for your next project and experience the difference that quality materials and craftsmanship can make.



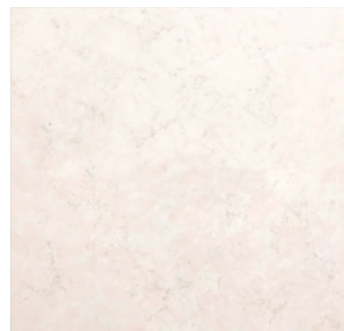
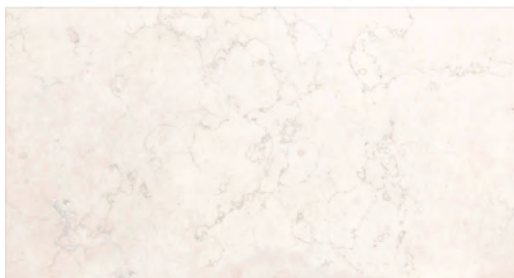
Bianco Perlino



Available Tile Sizes: 12x24x $\frac{3}{8}$ " , 18x18x $\frac{3}{8}$ "
Finish: Honed

A high-quality Italian limestone, Bianco Perlino carries slight variations of creams and beiges over a warm base, making it ideal in either traditional or modern settings that draw attention to its subtle veins and movement.

Due to its cloudy and uniform pattern, Bianco Perlino is particularly suitable for large area applications, indoors and out.



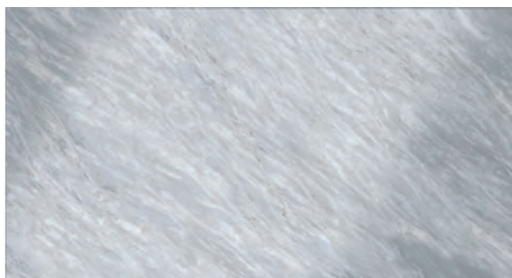
Grigio Perla



Available Tile Sizes: $12 \times 24 \times \frac{3}{8}$ " , $18 \times 18 \times \frac{3}{8}$ "
Finishes: Honed, Polished

Grigio Perla Marble features a unique colorization, with a pearl-gray background behind light gray clouds and speckled flecks, creating high visual interest. Quarried in the mountains of Italy, Grigio Perla makes a bold statement in every application; it becomes the conversation piece in the room.

This distinctive stone shows a great deal of inherent variation between blocks; each tile is a masterpiece signed by nature, absolutely unique & unrepeatable in its weaving of veins & shades.

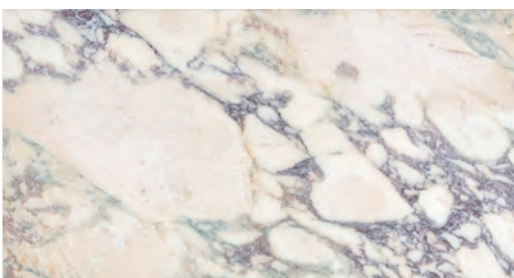




Available Tile Size: 12x24x $\frac{3}{8}$ ”
Finish: Polished

Medici Marble, also known as Breccia di Seravezza, shows purple to light green veining over a warm, light background with yellow, red, and gray intrusions. It is an historical material from Apuana and used in many buildings since the Roman Empire.

Medici Marble was largely employed by Cosimo I de’Medici, Lord of Florence, who had a monopoly on the quarries of Seravezza. He made this stone a symbol of royalty and power by using it in the Medici Chapels and in the Duomo of Florence.



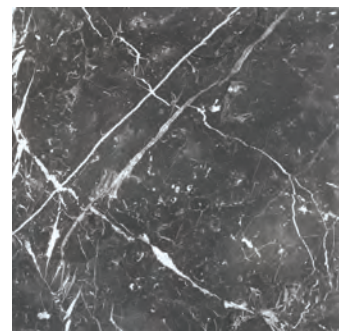
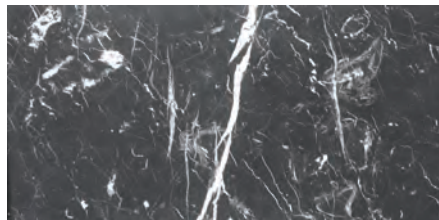
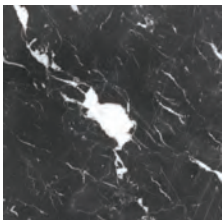
Nero Marquina



Available Tile Sizes: 12x12x³/₈" , 12x24x³/₈" " 18x18x³/₈"
Finish: Honed

Viewed as the paragon of black marbles, Nero Marquina does not disappoint. The striking contrast of deep black marble with intricate, bright white veining makes this stone a beautiful option that complements both traditional and modern aesthetics.

With three available in-stock sizes, Nero Marquina stands out as a remarkable choice for diverse design applications.

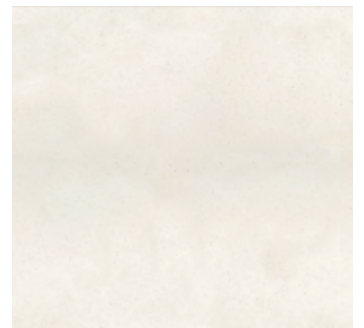


Porto White



Available Tile Sizes: $12 \times 24 \times \frac{3}{4}$ " , $18 \times 18 \times \frac{3}{4}$ " , $18 \times 36 \times \frac{3}{4}$ "
Finish: Honed

Porto White Limestone stands out for its light white tones and high strength. Modern yet classic, this neutral color can take on the mood of any style. Its thermal & ecological qualities, added to its elegance and resiliency, have made it a favorite of brands like Dior, Louis Vuitton, and Ralph Lauren, and because it is among the lightest white limestones available, it can create unique spaces on its own, or in combination with other materials.



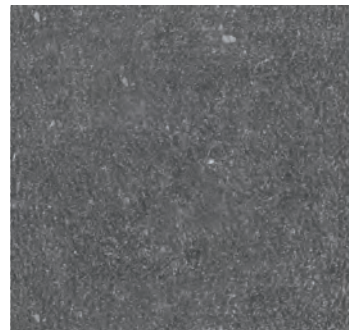
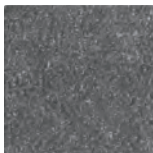
Pierre Noir



Available Tile Sizes: $8 \times 8 \times \frac{9}{16}$ ", $12 \times 24 \times \frac{9}{16}$ ", $18 \times 18 \times \frac{9}{16}$ "
Finishes: Honed, Rustic

Pierre Noir is a rustic limestone that offers strength and durability without sacrificing true sophistication. Distinctly modern, yet comfortable in a European farmhouse, this dark gray limestone features a large grained but fairly consistent charcoal base, with white intrusions throughout, making it perfect for every venue.

A classic in design and architecture, Pierre Noir brings a timeless elegance to any space, and is well suited for all indoor wall and floor applications.



Versailles



Available Tile Sizes: $8 \times 8 \times \frac{3}{8}$ " , $12 \times 24 \times \frac{3}{8}$ " , $18 \times 18 \times \frac{3}{8}$ "
Finish: Satin

When visiting the Church of Notre-Dame de Pitie, it is near impossible to miss the beautiful stoups crafted in Versailles Marble. It is no coincidence that the marble factory of Estours—where Versailles Marble is quarried—is nearby. In fact, several monuments of the region, including the villa Chiragan and Saint Bertrand de Comminges, also utilize this stunning marble.

Until the 15th century, the use of marble was a privilege of the princes of the church, but today Versailles adorns a wide range of projects. Its muted blue/green veining on a neutral, light ground allow it to span the range of classical to contemporary.



MATERIAL

BESPOKE STONE + TILE

www.ExploreMaterial.com

NOTE: Natural stones are products of nature. Variations in color, pattern, texture, and veining are inherent and these differences should be considered the beauty of natural stone. Shade variation is also an inherent part of ceramic tile and natural stone and shade matching cannot be guaranteed. Purchaser acknowledges that the actual stone or ceramic tile delivered may differ from the sample or picture(s) shown. Always request samples of present stock and check material prior to installation. Use constitutes acceptance.

Please contact your local Sales Associate for more information
Scan QR code to see more

© 2023 Material, LTD. All rights reserved
No part of this brochure may be reproduced without written
permission from Material, LTD

