

T/LL70 Vertical Float Switch



The **T/LL70** series is a comprehensive range of vertical float level switches designed around the proven and reliable magnet and reed switch principle.

Comprising many build variants, the **T/LL70** is customised to each application by means of materials, level adjustment, connection, thread and reed contact specification etc. The data below gives some sense of the numerous combinations, but some interdependency exists with regard to the materials of construction.

SPECIFICATION

Liquid Types

Liquids compatible with the construction materials; typically diesel, kerosene, water.

Materials

Typical Float Switch Builds:

	A	B	C	D
Header	Brass	Brass	316 SS	uPVC
Stem	Brass	Brass	316 SS	uPVC
Float	PP	Nitrophenyl	316 SS	PP
Float Stops	304 SS	304 SS	304 SS	uPVC
Gasket	Klingersil 4324 (where fitted)			
Enclosure	ABS			

Dimensions

Max. Length: 2250 mm Brass, 3000 mm SS, 1500 mm uPVC
Min. Length: 200 mm (4 Floats, 10 VA Reeds)
Min. Switch to Switch Dim: 40 mm (10 VA Reeds)
Min. Switch to End Dim: 40 mm (10 VA Reeds)
Min. Switch to Datum Dim: 40 mm (10 VA Reeds)

Fittings (typical)

Brass: 1" BSPP / BSPT / NPT, 1.5" BSPP / NPT
Stainless: 1" BSPP / BSPT / NPT, 1.5" BSPP / NPT
uPVC: 1" BSPP

Operation

Max Number of Floats: 6 x N/O or N/C, 4 x C/O

Reed Contact Specification

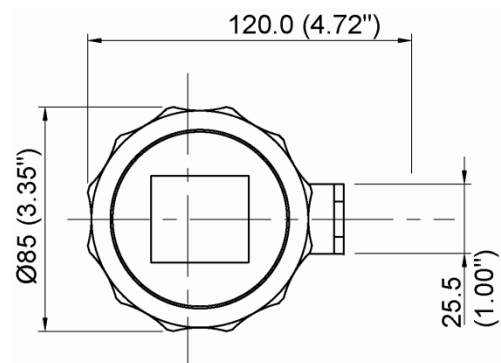
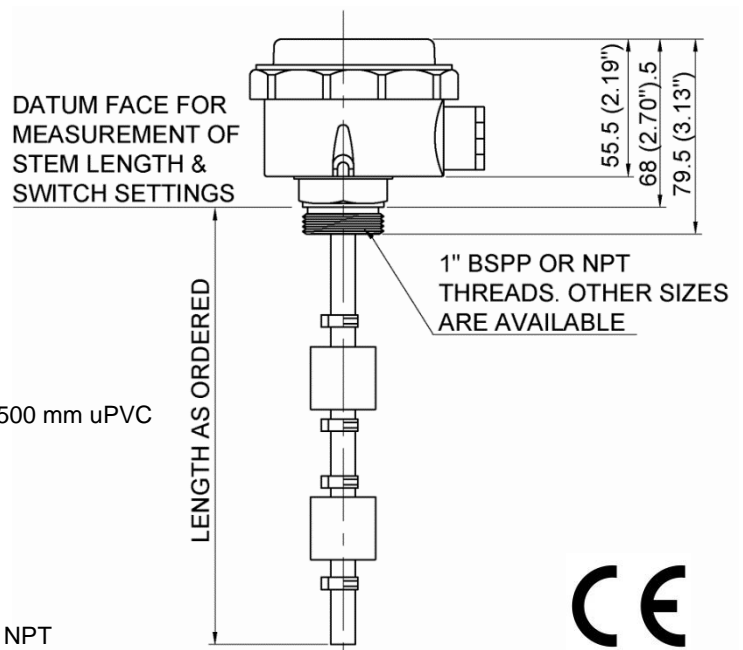
Reed Form	N/O or N/C	C/O
Voltage:	≤ 250 VAC/VDC	≤ 500 VAC/VDC
Current:	≤ 3 A*	≤ 3 A*
Power:	≤ 120 VA	≤ 100 VA
	*1 A standard	

Environmental Ratings

Ingress (Enclosure): IP67
Operating Temperature: -20 °C to +70 °C
Vibration: 7.44 Grms, BSEN 60068-2-64:1993, Random Vibration

Connections

Enclosure: Entry is M20 threaded for gland / conduit. Screw terminals for ≤ Ø2 mm / 3 mm² conductors.
Flying Leads: Connectors / terminals as required.



Available From:



GTS Gauges Transmitters Switches Pty Ltd
 6 Dayana Close Midvale WA 6056
 Ph: 08 9250 4400 Fax: 08 9250 4500
sales@gtsgauges.com.au www.gtsgauges.com.au