



SAMURAI-SPORTS.COM

NETBALL // TEAMWEAR // 2024-25



For more than 28 years, SAMURAI has set the gold standard in custom netball apparel - forging a legacy of unrivalled product performance and quality by curating on-court and off-court products that are built to perform at the highest level of netball.

Today, SAMURAI sits on the intersection where sport converges with lifestyle, meticulously creating high-performance apparel built with the modern athlete in mind. Every product design aligns with our core brand values and design principles, ensuring anything we put our name to is built for purpose.

Irrespective of your club's identity, SAMURAI stands as the epitome of product distinction and design, embracing the colours and heritage of all teams - uniquely positioning ourselves as the marginal gain for your club's success, both on and off the field.

Experience the same feeling as our elite athletes when you wear your SAMURAI kit. As a brand, we extend the same level of product quality to our grassroots teams as we do to our elite global partners, ensuring that no matter the level at which you compete, your team will proudly wear the finest kit available in the market.

SAMURAI-SPORTS.COM

 SAMURAI

# MATCHPLAY

DRESSES  
SHIRTS  
SKORTS  
LEGGINGS

MATCH PLAY / ACCESSORIES



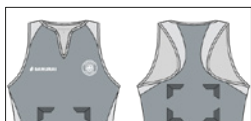
NEW FOR 2024/25

### COMPETITION DRESS

Introducing the new Competition Dress, engineered with ICONIX stretch fabric for a supportive fit and full wicking technology. With sleek design features like diverted side paneling and a relaxed racer-back.

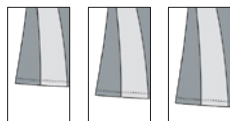
<b>FIT</b>	COMPETITION
<b>FABRIC</b>	KOHINO 4DX CUT & SEW OR SUBLIMATED
<b>SIZES*</b>	WOMENS: XXS - XS - S - M - L - XL - 2XL - 3XL - 4XL JNR GIRLS: JL - YXS - YS - YM - YL

**NECKLINE**



V-NECK STITCH WITH RACER BACK

**LENGTH\***



**REGULAR** (30") **LONG** (32") **EXTRA LONG** (34")

\*Please note: dress lengths may vary based on garment size



NEW FOR 2024/25

### CLUB DRESS

Made from breathable Diamond Poly fabric with moisture-wicking properties to keep you cool and dry. With a sleek fit, notched vee neckline, and concealed pockets, it's the perfect blend of both performance and style.

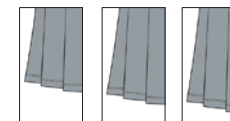
<b>FIT</b>	FIT & FLARE
<b>NECKLINE</b>	SKYFLEX COLLAR + STANDARD BACK
<b>FABRIC</b>	DIAMOND POLY CUT & SEW OR SUBLIMATED
<b>SIZES</b>	WOMENS: XXS - XS - S - M - L - XL - 2XL - 3XL - 4XL JNR GIRLS: JL - YXS - YS - YM - YL

**NECKLINE**



PANELLED SLIT WITH STANDARD BACK

**LENGTH\***



**REGULAR** (31") **LONG** (33") **EXTRA LONG** (35")

\*Please note: dress lengths may vary based on garment size



QUANTUM MUSE



SUPERNOVA



ECHO



ECLIPSE DUSK



GALACTIC



AURORA BLAZE



NEBULA FUSION



LUNAR RADIANCE

## CELESTIAL GRAPHICS PACK

In the expansive cosmic arena of sport apparel, SAMURAI presents its graphic lineup for the 24/25 season : the Celestial Graphics Pack. Each unique design in this pack pays homage to the formidable power, unity, and captivating beauty reminiscent of celestial wonders that grace netball courts across the globe - creating a fusion of your club's identity and history with the forces elevated design.

# QUANTUM MUSE

CGP-2425-02

# ECHO

CGP-2425-01

# NEBULA FUSION

CGP-2425-08

# SUPERNOVA

CGP-2425-06

# AURORA BLAZE

CGP-2425-07

# LUNAR RADIANCE

CGP-2425-09

# GALACTIC

CGP-2425-03

# ECLIPSE DUSK

CGP-2425-05

# 07



NEW FOR 2024/25

## CLUB SHIRT

Introducing our Club Shirt: durable, moisture-wicking, and stylish. With a sleek notched vee neckline, cap sleeves, and contoured fit. Designed for peak performance on the court.

<b>FIT</b>	ATHLETIC
<b>FABRIC</b>	SMOOTH INTERLOCK <b>CUT &amp; SEW</b> OR <b>SUBLIMATED</b> DIAMOND POLY <b>CUT &amp; SEW</b> OR <b>SUBLIMATED</b>
<b>SIZES</b>	WOMENS: XXS - XS - S - M - L - XL - 2XL - 3XL - 4XL JNR GIRLS: JL - YXS - YS - YM - YL

### NECKLINE



PANELLED SLIT



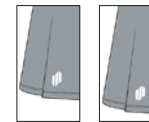
NEW FOR 2024/25

## CLUB SKORT

Crafted for netball excellence. With full wicking and a circle-cut design for natural pleats, it keeps the player cool and agile. The smooth waistband and integrated undershorts ensure comfort, support and discretion during every match.

<b>FIT</b>	ATHLETIC
<b>FABRIC</b>	KUSARO PRO (WITH KUSARO PRO UNDERSHORT) <b>CUT &amp; SEW</b> OR <b>SUBLIMATED</b> DIAMOND POLY (WITH ELITEX UNDERSHORT) <b>CUT &amp; SEW</b> OR <b>SUBLIMATED</b>
<b>SIZES</b>	WOMENS: XXS - XS - S - M - L - XL - 2XL - 3XL - 4XL JNR GIRLS: JL - YXS - YS - YM - YL

### LENGTH\*

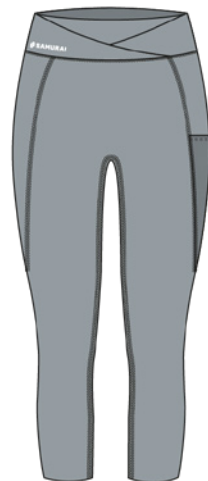


**REGULAR** (14")    **LONG** (16")

\*Please note: dress lengths may vary based on garment size

# 08

NETBALL // MATCH PLAY

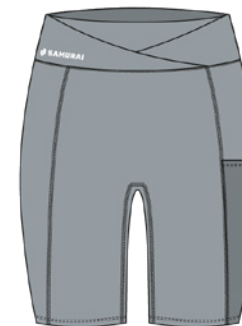


NEW FOR 2024/25

## CAPRI LEGGING

Introducing the new Capri Leggings: stylish, supportive, and built for performance. With moisture-wicking fabric, wrap-around paneling and a handy side pocket. Versatile enough for any session, workout or match.

<b>FIT</b>	TIGHT FIT
<b>FABRIC</b>	POLYESTER/SPANDEX <b>CUT &amp; SEW</b> OR <b>SUBLIMATED</b>
<b>SIZES</b>	WOMENS: XXS - XS - S - M - L - XL - 2XL - 3XL - 4XL JNR GIRLS: JL - YXS - YS - YM - YL



NEW FOR 2024/25

## CYCLE SHORT

Designed for comfort and performance. Made from semi-matt stretch fabric, it wicks moisture and contours to your body for support. It's built for durability and convenience with wrap-around panels, a side pocket and smooth seams.

<b>FIT</b>	TIGHT FIT
<b>FABRIC</b>	POLYESTER/SPANDEX <b>CUT &amp; SEW</b> OR <b>SUBLIMATED</b>
<b>SIZES</b>	WOMENS: XXS - XS - S - M - L - XL - 2XL - 3XL - 4XL JNR GIRLS: JL - YXS - YS - YM - YL



# 09



NEW FOR 2024/25

## SPORT SHORT

Designed for peak performance and style. Crafted from stretch jersey material with full wicking, they offer a comfortable fit and support.

<b>FIT</b>	COMPETITION
<b>FABRIC</b>	ELITEX CUT & SEW OR SUBLIMATED
<b>SIZES</b>	WOMENS: XXS - XS - S - M - L - XL - 2XL - 3XL - 4XL JNR GIRLS: JL - YXS - YS - YM - YL



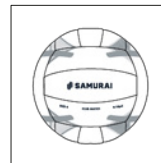
## NETBALLS

- AET TRAINING BALL**  
Offering enhanced grip to ensure optimum control during match play conditions.
- CLUB MATCH BALL**  
From amateur to professional, this ball is designed for all abilities - perfect to help you get match ready.

<b>FABRIC</b>	SYNTHETIC RUBBER
<b>SIZES</b>	4 / 5
<b>DESIGNS</b>	CORE STYLE OR FULLY BESPOKE



AET TRAINING BALL



CLUB MATCH BALL



C WD WA  
GA GK GD GS

## PATCHES

All SAMURAI netball dresses and tops are available with or without Velcro adhesive stripes to accommodate co-ordination player position patches.

<b>FABRIC</b>	SMOOTH INTERLOCK - SUBLIMATED
<b>SIZES</b>	ONE SIZE

### SETS



**STANDARD 14**  
(14 PATCHES)  
GS / GA / WA / C  
/ WD / GD / GK



**HIGH 5'S**  
(14 PATCHES)  
GK / GA / GD / C  
/ GS / T / S

NETBALL // MATCH PLAY // ACCESSORIES

SELECT YOUR STYLE

Standard

Racer Back

# CUSTOM KIT BUILDER

IMMERSE YOURSELF & BRING YOUR CLUB'S IDENTITY TO LIFE AT [SAMURAI-SPORTS.COM](https://samurai-sports.com)

SAMURAI offers a diverse range of solutions to bring your team's identity to life. Choose from an extensive collection of design options tailored to meet your club's needs. Our designers can assist with bespoke kit that is curated to your unique identity. Alternatively, our core stock options are available in a matter of weeks should you be in need of quick delivery.



ADD CLUB BADGE



SELECT YOUR COLOURS





# LEISUREWEAR

2024/25 THEMES

CORE +

OUTERWEAR

ADDITIONAL

Choosing one of our premium leisurewear ranges is just the beginning. Each theme can be expanded upon to create a truly unique design. Choose between our cut & sew, part-sublimated and fully sublimated options for a leisurewear range that is perfectly suited to you.



CUT AND SEW

Constructed from separate panels sewn together, the cut and sew option allows you to create a leisurewear range perfectly suited to your needs; offering multiple piping, taping and stitching details and the chance to combine different fabrics to create a contrast of textures.

KEY FEATURES

- Stock fabrics
- Contrasting panels



ONYX BLACK BLAZE RED PURE WHITE



PART SUBLIMATED

The best of both, part-sublimated items combine our exclusive leisurewear themes with endless colour and pattern possibilities. With the ability to contrast different textured fabrics, this option takes our leisurewear ranges one step further.

KEY FEATURES

- Your colours
- Your pattern
- Contrasting fabrics



ONYX BLACK PURE WHITE SUBLIMATED



FULLY SUBLIMATED

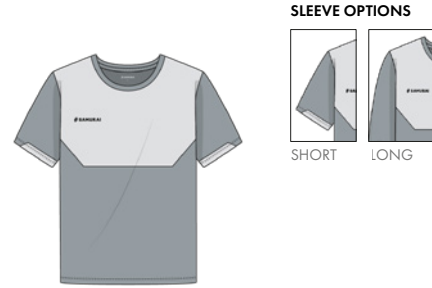
The premium option that offers complete creative freedom - fully sublimated items have infinite design possibilities. Created through the sublimation process of printing directly onto a fabric; this technique gives you an unlimited number of colour and pattern options to create a truly unique design. Your imagination is the limit.

KEY FEATURES

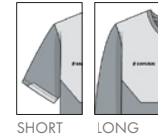
- Your colours
- Your pattern
- Full body sublimated pattern
- Unlimited Logo and Sponsors



SUBLIMATED



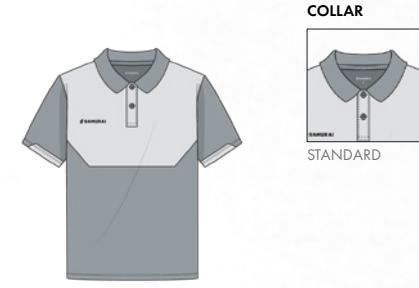
SLEEVE OPTIONS



### T-SHIRT

A versatile essential designed for optimum movement, style and comfort; whatever the activity.

**FIT** ATHLETIC  
**FABRIC** SMOOTH INTERLOCK - **CUT & SEW** OR **SUBLIMATED**  
 COTTON 185GM - **CUT & SEW**



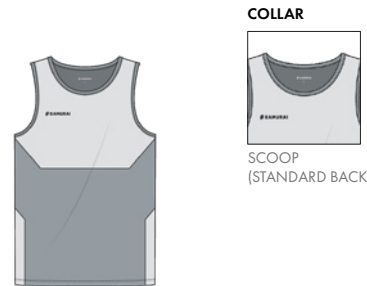
COLLAR



### POLO SHIRT

Creating a complete team image, lightweight and classic in style - a traditional addition to any leisure range.

**FIT** ATHLETIC  
**FABRIC** DIAMOND POLY - **CUT & SEW** OR **SUBLIMATED**  
 COTTON 220GM - **CUT & SEW**



COLLAR



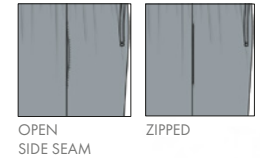
### VEST

Designed to maintain comfort and breathability whilst performing, allowing you to move freely during every exercise.

**FIT** ATHLETIC  
**FABRIC** DIAMOND POLY - **CUT & SEW** OR **SUBLIMATED**  
 SMOOTH INTERLOCK - **CUT & SEW** OR **SUBLIMATED**



POCKETS



### MULTISPORT SHORT

Providing support and freedom of movement during every exercise whilst maintaining performance levels.

**FIT** 5" INSEAM  
**FABRIC** DIAMOND POLY - **CUT & SEW** OR **SUBLIMATED**  
 SMOOTH INTERLOCK - **CUT & SEW** OR **SUBLIMATED**  
 TASLON POLY - **CUT & SEW**  
 BRUSHED FLEECE - **CUT & SEW**

NEW FOR 2024/25

# VALOR

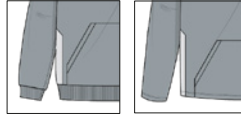
Unleash the power of distinction and a manifestation of precision and style. Elevate your presence on the field with contrasting panels and angular finishes that deliver a dynamic aesthetic. Valor is a bold statement of excellence inspired by the spirit of netball.

SIZE RANGE

MENS: XXS - XS - S - M - L - XL - 2XL - 3XL - 4XL - 5XL  
 JNR BOYS: JM - JL - YXS - YS - YM - YL  
 WOMENS: XXS - XS - S - M - L - XL - 2XL - 3XL - 4XL  
 JNR GIRLS: JM - JL - YXS - YS - YM - YL



**HEM**



RIBBED (STANDARD FOR BRUSHED FLEECE)    TURNED UP (STANDARD FOR MATT POLY FLEECE)

**HOODIE**

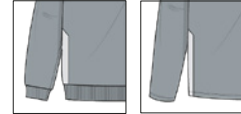
Built for a relaxed look, with supreme softness and optimum comfort - perfect for leisure and casual wear.

**FIT / FABRIC**    **REGULAR / BRUSHED FLEECE - CUT & SEW**  
**ATHLETIC / MATT POLY FLEECE - CUT & SEW OR SUBLIMATED**

**POCKETS**    **POUCH OR SIDE SEAM**



**HEM**



RIBBED (STANDARD FOR BRUSHED FLEECE)    TURNED UP (STANDARD FOR MATT POLY FLEECE)

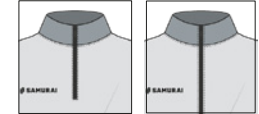
**SWEATER**

Designed with leisure in mind, this sweater combines a laid-back look with premium fleece fabric for maximum comfort and style.

**FIT / FABRIC**    **REGULAR / BRUSHED FLEECE - CUT & SEW**  
**ATHLETIC / MATT POLY FLEECE - CUT & SEW OR SUBLIMATED**

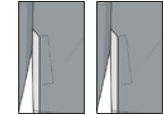


**ZIP OPTIONS**



1/4 ZIP    FULL ZIP

**POCKET**



TURNED OPEN    SIDE SEAM ZIPPED

**PULLOVER**

A favourite among teams, ensuring players are warm and match ready - the ideal mid-layer.

**FIT**    **ATHLETIC**

**FABRIC**    **MATT POLY FLEECE - CUT & SEW OR SUBLIMATED**

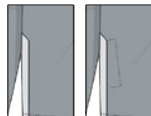


**COLLAR**



FULL ZIP    1/4 ZIP

**POCKETS**



NONE    ZIPPED

**TRACKTOP**

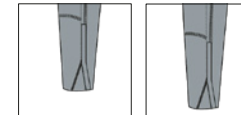
Ideal for both pitch-side and leisure, the ultimate combination of performance and leisure. Pair with the Track Pant or Tapered Track Pant for a complete tracksuit.

**FIT**    **ATHLETIC**

**FABRIC**    **SMOOTH NYLON - CUT & SEW OR PART SUBLIMATED**  
**TASLON POLY - CUT & SEW OR PART SUBLIMATED**  
**MICROLIGHT RIPSTOP - CUT & SEW OR PART SUBLIMATED**

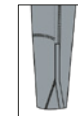


**LEG LENGTH**



REGULAR    LONG

**SIDE LEG ZIP**



12"    23"

**TAPERED TRACK PANT**

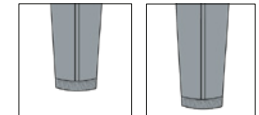
Designed and constructed with a modern style tapered fit, ideal for everyday leisure or training.

**FIT**    **TAPERED**

**FABRIC**    **MATT POLY FLEECE - CUT & SEW OR PART SUBLIMATED**  
**LIGHTWEIGHT MATT POLY FLEECE - CUT & SEW OR PART SUBLIMATED**

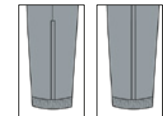


**LEG LENGTH**



REGULAR    LONG

**SIDE LEG ZIP**



12"    23"

**TRACK PANT**

Allowing enhanced movement and agility without compromising on comfort. For the ultimate tracksuit, couple with the Track Top.

**FIT**    **ATHLETIC**

**FABRIC**    **SMOOTH NYLON - CUT & SEW OR PART SUBLIMATED**  
**TASLON POLY - CUT & SEW OR PART SUBLIMATED**  
**MICROLIGHT RIPSTOP - CUT & SEW OR PART SUBLIMATED**  
**BRUSHED FLEECE - CUT & SEW**



T-SHIRT



POLO



VEST



SWEATER



HOODIE



MULTISPORT SHORT



PULLOVER



TRACKTOP

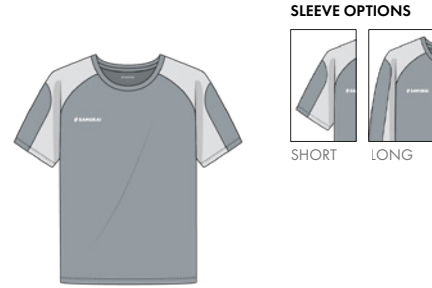


TAPERED TRACK PANT



TRACK PANT





**SLEEVE OPTIONS**



**T-SHIRT**

A versatile essential designed for optimum movement, style and comfort; whatever the activity.

**FIT** ATHLETIC  
**FABRIC** SMOOTH INTERLOCK - **CUT & SEW OR SUBLIMATED**  
 COTTON 185GM - **CUT & SEW**



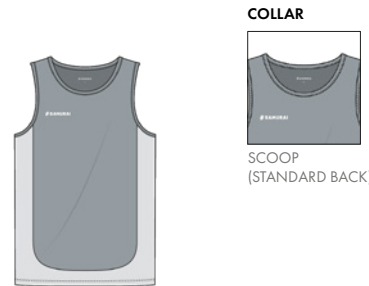
**COLLAR**



**POLO SHIRT**

Creating a complete team image, lightweight and classic in style - a traditional addition to any leisure range.

**FIT** ATHLETIC  
**FABRIC** DIAMOND POLY - **CUT & SEW OR SUBLIMATED**  
 COTTON 220GM - **CUT & SEW**



**COLLAR**

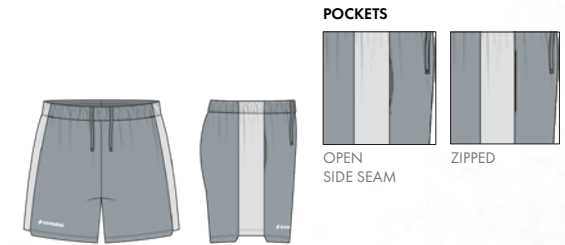


SCOOP (STANDARD BACK)

**VEST**

Designed to maintain comfort and breathability whilst performing, allowing you to move freely during every exercise.

**FIT** ATHLETIC  
**FABRIC** DIAMOND POLY - **CUT & SEW OR SUBLIMATED**  
 SMOOTH INTERLOCK - **CUT & SEW OR SUBLIMATED**



**POCKETS**



OPEN SIDE SEAM



ZIPPED

**MULTISPORT SHORT**

Providing support and freedom of movement during every exercise whilst maintaining performance levels.

**FIT** 5" INSEAM  
**FABRIC** DIAMOND POLY - **CUT & SEW OR SUBLIMATED**  
 SMOOTH INTERLOCK - **CUT & SEW OR SUBLIMATED**  
 TASLON POLY - **CUT & SEW**  
 BRUSHED FLEECE - **CUT & SEW**

# ENDO

Endo introduces a contemporary vision to leisurewear, blending boldness with modern aesthetics. Discover the allure of block panels that seamlessly come together, creating a striking contrast that defines this collection.

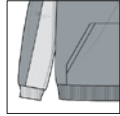
SIZE RANGE

MENS: XXS - XS - S - M - L - XL - 2XL - 3XL - 4XL - 5XL  
 JNR BOYS: JM - JL - YXS - YS - YM - YL  
 WOMENS: XXS - XS - S - M - L - XL - 2XL - 3XL - 4XL  
 JNR GIRLS: JM - JL - YXS - YS - YM - YL





**HEM**



RIBBED  
(STANDARD FOR  
BRUSHED FLEECE)



TURNED UP  
(STANDARD FOR  
MATT POLY FLEECE)

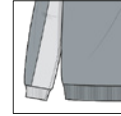
**HOODIE**

Built for a relaxed look, with supreme softness and optimum comfort - perfect for leisure and casual wear.

- FIT / FABRIC**    **REGULAR / BRUSHED FLEECE - CUT & SEW**  
**ATHLETIC / MATT POLY FLEECE - CUT & SEW OR SUBLIMATED**
- POCKETS**        **POUCH OR SIDE SEAM**



**HEM**



RIBBED  
(STANDARD FOR  
BRUSHED FLEECE)



TURNED UP  
(STANDARD FOR  
MATT POLY FLEECE)

**SWEATER**

Designed with leisure in mind, this sweater combines a laid-back look with premium fleece fabric for maximum comfort and style.

- FIT / FABRIC**    **REGULAR / BRUSHED FLEECE - CUT & SEW**  
**ATHLETIC / MATT POLY FLEECE - CUT & SEW OR SUBLIMATED**



**ZIP OPTIONS**



1/4 ZIP



FULL ZIP

**PULLOVER**

A favourite among teams, ensuring players are warm and match ready - the ideal mid-layer.

- FIT**                **ATHLETIC**
- FABRIC**         **MATT POLY FLEECE - CUT & SEW OR SUBLIMATED**

**POCKETS**



TURNED  
OPEN



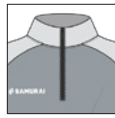
SIDE SEAM  
ZIPPED



**COLLAR**



FULL ZIP



1/4 ZIP

**POCKETS**



NONE



ZIPPED

**TRACKTOP**

Ideal for both pitch-side and leisure, the ultimate combination of performance and leisure. Pair with the Track Pant or Tapered Track Pant for a complete tracksuit.

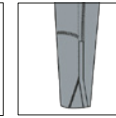
- FIT**                **ATHLETIC**
- FABRIC**         **SMOOTH NYLON - CUT & SEW OR PART SUBLIMATED**  
**TASLON POLY - CUT & SEW OR PART SUBLIMATED**  
**MICROLIGHT RIPSTOP - CUT & SEW OR PART SUBLIMATED**



**LEG LENGTH**

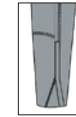


REGULAR



LONG

**SIDE LEG ZIP**



12"

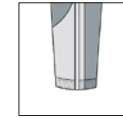
**TAPERED TRACK PANT**

Designed and constructed with a modern style tapered fit, ideal for everyday leisure or training.

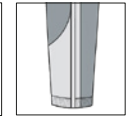
- FIT**                **TAPERED**
- FABRIC**         **MATT POLY FLEECE - CUT & SEW OR PART SUBLIMATED**  
**LIGHTWEIGHT MATT POLY FLEECE - CUT & SEW OR PART SUBLIMATED**



**LEG LENGTH**



REGULAR



LONG

**SIDE LEG ZIP**



12"



23"

**TRACK PANT**

Allowing enhanced movement and agility without compromising on comfort. For the ultimate tracksuit, couple with the Track Top.

- FIT**                **ATHLETIC**
- FABRIC**         **SMOOTH NYLON - CUT & SEW OR PART SUBLIMATED**  
**TASLON POLY - CUT & SEW OR PART SUBLIMATED**  
**MICROLIGHT RIPSTOP - CUT & SEW OR PART SUBLIMATED**  
**BRUSHED FLEECE - CUT & SEW**

18



T-SHIRT



POLO



VEST



SWEATER



HOODIE



MULTISPORT SHORT



PULLOVER



TRACKTOP



TAPERED TRACK PANT



TRACK PANT

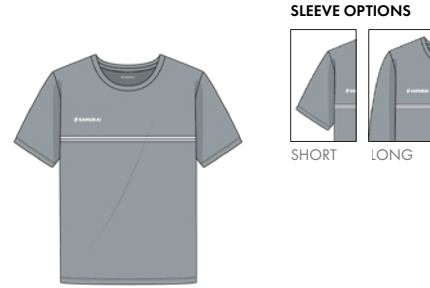


# STRIA

Embrace the essence of simplicity and modernity with Stria, a collection that draws inspiration from the elegance of parallel stripes. Stria captivates with its minimalist design, featuring sleek duo-contrasting colored taping that delivers a contemporary finish. This collection redefines the classic stripe, offering a modern twist and a touch of netball-inspired sophistication for those who appreciate refined style.

SIZE RANGE

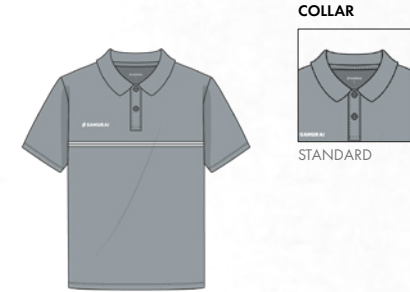
MENS:           XXS - XS - S - M - L - XL - 2XL - 3XL - 4XL - 5XL  
 JNR BOYS:    JM - JL - YXS - YS - YM - YL  
 WOMENS:     XXS - XS - S - M - L - XL - 2XL - 3XL - 4XL  
 JNR GIRLS:   JM - JL - YXS - YS - YM - YL



## T-SHIRT

A versatile essential designed for optimum movement, style and comfort; whatever the activity.

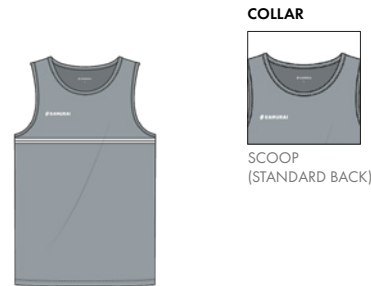
**FIT**            ATHLETIC  
**FABRIC**       SMOOTH INTERLOCK - **CUT & SEW** OR **SUBLIMATED**  
                     COTTON 185GM - **CUT & SEW**



## POLO SHIRT

Creating a complete team image, lightweight and classic in style - a traditional addition to any leisure range.

**FIT**            ATHLETIC  
**FABRIC**       DIAMOND POLY - **CUT & SEW** OR **SUBLIMATED**  
                     COTTON 220GM - **CUT & SEW**



## VEST

Designed to maintain comfort and breathability whilst performing, allowing you to move freely during every exercise.

**FIT**            ATHLETIC  
**FABRIC**       DIAMOND POLY - **CUT & SEW** OR **SUBLIMATED**  
                     SMOOTH INTERLOCK - **CUT & SEW** OR **SUBLIMATED**



## MULTISPORT SHORT

Providing support and freedom of movement during every exercise whilst maintaining performance levels.

**FIT**            5" INSEAM  
**FABRIC**       DIAMOND POLY - **CUT & SEW** OR **SUBLIMATED**  
                     SMOOTH INTERLOCK - **CUT & SEW** OR **SUBLIMATED**  
                     TASLON POLY - **CUT & SEW**  
                     BRUSHED FLEECE - **CUT & SEW**



**HEM**



RIBBED  
(STANDARD FOR  
BRUSHED FLEECE)



TURNED UP  
(STANDARD FOR  
MATT POLY FLEECE)

**HOODIE**

Built for a relaxed look, with supreme softness and optimum comfort - perfect for leisure and casual wear.

- FIT / FABRIC**    **REGULAR / BRUSHED FLEECE - CUT & SEW**  
**ATHLETIC / MATT POLY FLEECE - CUT & SEW OR SUBLIMATED**
- POCKETS**        **POUCH OR SIDE SEAM**



**HEM**



RIBBED  
(STANDARD FOR  
BRUSHED FLEECE)



TURNED UP  
(STANDARD FOR  
MATT POLY FLEECE)

**SWEATER**

Designed with leisure in mind, this sweater combines a laid-back look with premium fleece fabric for maximum comfort and style.

- FIT / FABRIC**    **REGULAR / BRUSHED FLEECE - CUT & SEW**  
**ATHLETIC / MATT POLY FLEECE - CUT & SEW OR SUBLIMATED**



**ZIP OPTIONS**



1/4 ZIP



FULL ZIP

**PULLOVER**

A favourite among teams, ensuring players are warm and match ready - the ideal mid-layer.

- FIT**                **ATHLETIC**
- FABRIC**         **MATT POLY FLEECE - CUT & SEW OR SUBLIMATED**

**POCKETS**



TURNED  
OPEN



SIDE SEAM  
ZIPPED



**COLLAR**



FULL ZIP



1/4 ZIP

**POCKETS**



NONE



ZIPPED

**TRACKTOP**

Ideal for both pitch-side and leisure, the ultimate combination of performance and leisure. Pair with the Track Pant or Tapered Track Pant for a complete tracksuit.

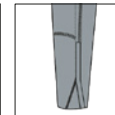
- FIT**                **ATHLETIC**
- FABRIC**         **SMOOTH NYLON - CUT & SEW OR PART SUBLIMATED**  
**TASLON POLY - CUT & SEW OR PART SUBLIMATED**  
**MICROLIGHT RIPSTOP - CUT & SEW OR PART SUBLIMATED**



**LEG LENGTH**

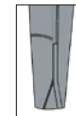


REGULAR



LONG

**SIDE LEG ZIP**



12"

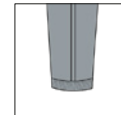
**TAPERED TRACK PANT**

Designed and constructed with a modern style tapered fit, ideal for everyday leisure or training.

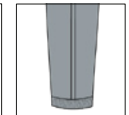
- FIT**                **TAPERED**
- FABRIC**         **MATT POLY FLEECE - CUT & SEW OR PART SUBLIMATED**  
**LIGHTWEIGHT MATT POLY FLEECE - CUT & SEW OR PART SUBLIMATED**



**LEG LENGTH**

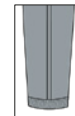


REGULAR

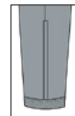


LONG

**SIDE LEG ZIP**



12"



23"

**TRACK PANT**

Allowing enhanced movement and agility without compromising on comfort. For the ultimate tracksuit, couple with the Track Top.

- FIT**                **ATHLETIC**
- FABRIC**         **SMOOTH NYLON - CUT & SEW OR PART SUBLIMATED**  
**TASLON POLY - CUT & SEW OR PART SUBLIMATED**  
**MICROLIGHT RIPSTOP - CUT & SEW OR PART SUBLIMATED**  
**BRUSHED FLEECE - CUT & SEW**



T-SHIRT



POLO



VEST



SWEATER



HOODIE



MULTISPORT SHORT



PULLOVER



TRACKTOP

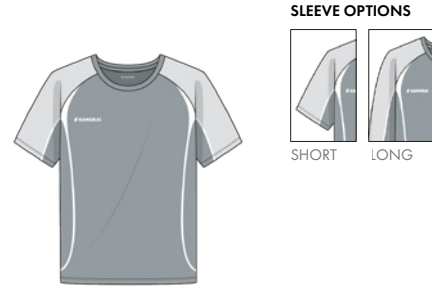


TAPERED TRACK PANT



TRACK PANT





SLEEVE OPTIONS



### T-SHIRT

A versatile essential designed for optimum movement, style and comfort; whatever the activity.

**FIT** ATHLETIC  
**FABRIC** SMOOTH INTERLOCK - **CUT & SEW** OR **SUBLIMATED**  
 COTTON 185GM - **CUT & SEW**



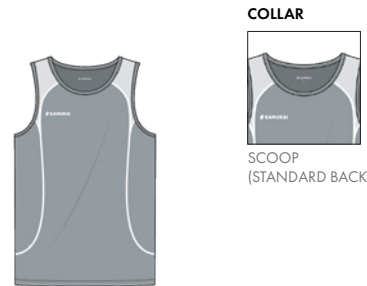
COLLAR



### POLO SHIRT

Creating a complete team image, lightweight and classic in style - a traditional addition to any leisure range.

**FIT** ATHLETIC  
**FABRIC** DIAMOND POLY - **CUT & SEW** OR **SUBLIMATED**  
 COTTON 220GM - **CUT & SEW**



COLLAR

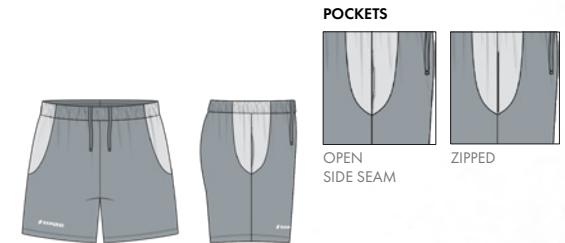


SCOOP (STANDARD BACK)

### VEST

Designed to maintain comfort and breathability whilst performing, allowing you to move freely during every exercise.

**FIT** ATHLETIC  
**FABRIC** DIAMOND POLY - **CUT & SEW** OR **SUBLIMATED**  
 SMOOTH INTERLOCK - **CUT & SEW** OR **SUBLIMATED**



POCKETS



OPEN SIDE SEAM



ZIPPED

### MULTISPORT SHORT

Providing support and freedom of movement during every exercise whilst maintaining performance levels.

**FIT** 5" INSEAM  
**FABRIC** DIAMOND POLY - **CUT & SEW** OR **SUBLIMATED**  
 SMOOTH INTERLOCK - **CUT & SEW** OR **SUBLIMATED**  
 TASLON POLY - **CUT & SEW**  
 BRUSHED FLEECE - **CUT & SEW**

# EUROPA

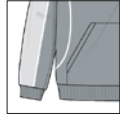
Embark on a nostalgic journey with Europa, a true SAMURAI classic that draws inspiration from the vibrant spirit of the 90s. This timeless collection artfully combines contrasting panels and accent piping, resulting in a harmonious fusion of curves and fluid design.

SIZE RANGE

MENS: XXS - XS - S - M - L - XL - 2XL - 3XL - 4XL - 5XL  
 JNR BOYS: JM - JL - YXS - YS - YM - YL  
 WOMENS: XXS - XS - S - M - L - XL - 2XL - 3XL - 4XL  
 JNR GIRLS: JM - JL - YXS - YS - YM - YL



**HEM**



RIBBED  
(STANDARD FOR  
BRUSHED FLEECE)



TURNED UP  
(STANDARD FOR  
MATT POLY FLEECE)

**HOODIE**

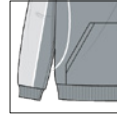
Built for a relaxed look, with supreme softness and optimum comfort - perfect for leisure and casual wear.

**FIT / FABRIC**    **REGULAR / BRUSHED FLEECE - CUT & SEW**  
**ATHLETIC / MATT POLY FLEECE - CUT & SEW OR SUBLIMATED**

**POCKETS**        **POUCH OR SIDE SEAM**



**HEM**



RIBBED  
(STANDARD FOR  
BRUSHED FLEECE)



TURNED UP  
(STANDARD FOR  
MATT POLY FLEECE)

**SWEATER**

Designed with leisure in mind, this sweater combines a laid-back look with premium fleece fabric for maximum comfort and style.

**FIT / FABRIC**    **REGULAR / BRUSHED FLEECE - CUT & SEW**  
**ATHLETIC / MATT POLY FLEECE - CUT & SEW OR SUBLIMATED**



**ZIP OPTIONS**



1/4 ZIP



FULL ZIP

**PULLOVER**

A favourite among teams, ensuring players are warm and match ready - the ideal mid-layer.

**FIT**                **ATHLETIC**

**FABRIC**         **MATT POLY FLEECE - CUT & SEW OR SUBLIMATED**

**POCKETS**



TURNED  
OPEN



SIDE SEAM  
ZIPPED



**COLLAR**



FULL ZIP



1/4 ZIP

**POCKETS**



NONE



ZIPPED

**TRACKTOP**

Ideal for both pitch-side and leisure, the ultimate combination of performance and leisure. Pair with the Track Pant or Tapered Track Pant for a complete tracksuit.

**FIT**                **ATHLETIC**

**FABRIC**         **SMOOTH NYLON - CUT & SEW OR PART SUBLIMATED**  
**TASLON POLY - CUT & SEW OR PART SUBLIMATED**  
**MICROLIGHT RIPSTOP - CUT & SEW OR PART SUBLIMATED**



**LEG LENGTH**

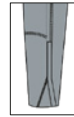


REGULAR



LONG

**SIDE LEG ZIP**



12"

**TAPERED TRACK PANT**

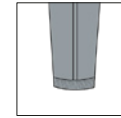
Designed and constructed with a modern style tapered fit, ideal for everyday leisure or training.

**FIT**                **TAPERED**

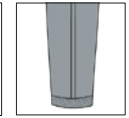
**FABRIC**         **MATT POLY FLEECE - CUT & SEW OR PART SUBLIMATED**  
**LIGHTWEIGHT MATT POLY FLEECE - CUT & SEW OR PART SUBLIMATED**



**LEG LENGTH**



REGULAR

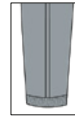


LONG

**SIDE LEG ZIP**



12"



23"

**TRACK PANT**

Allowing enhanced movement and agility without compromising on comfort. For the ultimate tracksuit, couple with the Track Top.

**FIT**                **ATHLETIC**

**FABRIC**         **SMOOTH NYLON - CUT & SEW OR PART SUBLIMATED**  
**TASLON POLY - CUT & SEW OR PART SUBLIMATED**  
**MICROLIGHT RIPSTOP - CUT & SEW OR PART SUBLIMATED**  
**BRUSHED FLEECE - CUT & SEW**



T-SHIRT



POLO



VEST



SWEATER



HOODIE



MULTISPORT SHORT



PULLOVER



TRACKTOP



TAPERED TRACK PANT



TRACK PANT





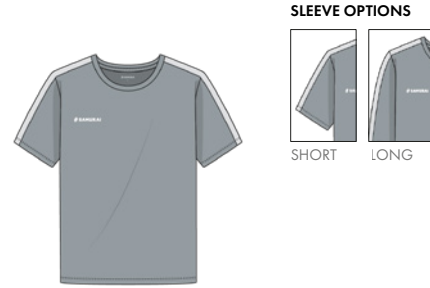


# PHOENIX

Step into timeless sophistication with Phoenix, where a simplistic panelled design takes center stage. This collection remains a classic staple of our leisurewear ranges, offering a blend of elegance and comfort that transcends trends.

## SIZE RANGE

MENS:           XXS - XS - S - M - L - XL - 2XL - 3XL - 4XL - 5XL  
 JNR BOYS:    JM - JL - YXS - YS - YM - YL  
 WOMENS:     XXS - XS - S - M - L - XL - 2XL - 3XL - 4XL  
 JNR GIRLS:   JM - JL - YXS - YS - YM - YL



## T-SHIRT

A versatile essential designed for optimum movement, style and comfort; whatever the activity.

**FIT**            ATHLETIC  
**FABRIC**       SMOOTH INTERLOCK - **CUT & SEW OR SUBLIMATED**  
                     COTTON 185GM - **CUT & SEW**



## POLO SHIRT

Creating a complete team image, lightweight and classic in style - a traditional addition to any leisure range.

**FIT**            ATHLETIC  
**FABRIC**       DIAMOND POLY - **CUT & SEW OR SUBLIMATED**  
                     COTTON 220GM - **CUT & SEW**



## VEST

Designed to maintain comfort and breathability whilst performing, allowing you to move freely during every exercise.

**FIT**            ATHLETIC  
**FABRIC**       DIAMOND POLY - **CUT & SEW OR SUBLIMATED**  
                     SMOOTH INTERLOCK - **CUT & SEW OR SUBLIMATED**

## MULTISPORT SHORT

Providing support and freedom of movement during every exercise whilst maintaining performance levels.

**FIT**            5" INSEAM  
**FABRIC**       DIAMOND POLY - **CUT & SEW OR SUBLIMATED**  
                     SMOOTH INTERLOCK - **CUT & SEW OR SUBLIMATED**  
                     TASLON POLY - **CUT & SEW**  
                     BRUSHED FLEECE - **CUT & SEW**



**HEM**



RIBBED  
(STANDARD FOR  
BRUSHED FLEECE)



TURNED UP  
(STANDARD FOR  
MATT POLY FLEECE)

**HOODIE**

Built for a relaxed look, with supreme softness and optimum comfort - perfect for leisure and casual wear.

**FIT / FABRIC**    **REGULAR** / BRUSHED FLEECE - **CUT & SEW**  
**ATHLETIC** / MATT POLY FLEECE - **CUT & SEW** OR **SUBLIMATED**

**POCKETS**        **POUCH** OR **SIDE SEAM**



**HEM**



RIBBED  
(STANDARD FOR  
BRUSHED FLEECE)



TURNED UP  
(STANDARD FOR  
MATT POLY FLEECE)

**SWEATER**

Designed with leisure in mind, this sweater combines a laid-back look with premium fleece fabric for maximum comfort and style.

**FIT / FABRIC**    **REGULAR** / BRUSHED FLEECE - **CUT & SEW**  
**ATHLETIC** / MATT POLY FLEECE - **CUT & SEW** OR **SUBLIMATED**



**ZIP OPTIONS**



1/4 ZIP



FULL ZIP

**PULLOVER**

A favourite among teams, ensuring players are warm and match ready - the ideal mid-layer.

**FIT**                **ATHLETIC**

**FABRIC**         **MATT POLY FLEECE - CUT & SEW** OR **SUBLIMATED**

**POCKETS**



TURNED  
OPEN



SIDE SEAM  
ZIPPED



**COLLAR**



FULL ZIP



1/4 ZIP

**POCKETS**



NONE



ZIPPED

**TRACKTOP**

Ideal for both pitch-side and leisure, the ultimate combination of performance and leisure. Pair with the Track Pant or Tapered Track Pant for a complete tracksuit.

**FIT**                **ATHLETIC**

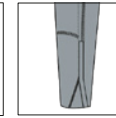
**FABRIC**         **SMOOTH NYLON - CUT & SEW** OR **PART SUBLIMATED**  
**TASLON POLY - CUT & SEW** OR **PART SUBLIMATED**  
**MICROLIGHT RIPSTOP - CUT & SEW** OR **PART SUBLIMATED**



**LEG LENGTH**

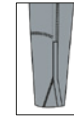


REGULAR



LONG

**SIDE LEG ZIP**



12"

**TAPERED TRACK PANT**

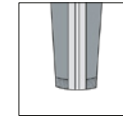
Designed and constructed with a modern style tapered fit, ideal for everyday leisure or training.

**FIT**                **TAPERED**

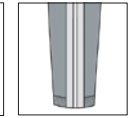
**FABRIC**         **MATT POLY FLEECE - CUT & SEW** OR **PART SUBLIMATED**  
**LIGHTWEIGHT MATT POLY FLEECE - CUT & SEW** OR **PART SUBLIMATED**



**LEG LENGTH**

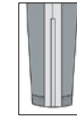


REGULAR

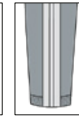


LONG

**SIDE LEG ZIP**



12"



23"

**TRACK PANT**

Allowing enhanced movement and agility without compromising on comfort. For the ultimate tracksuit, couple with the Track Top.

**FIT**                **ATHLETIC**

**FABRIC**         **SMOOTH NYLON - CUT & SEW** OR **PART SUBLIMATED**  
**TASLON POLY - CUT & SEW** OR **PART SUBLIMATED**  
**MICROLIGHT RIPSTOP - CUT & SEW** OR **PART SUBLIMATED**  
**BRUSHED FLEECE - CUT & SEW**



T-SHIRT



POLO



VEST



SWEATER



HOODIE



MULTISPORT SHORT



PULLOVER



TRACKTOP

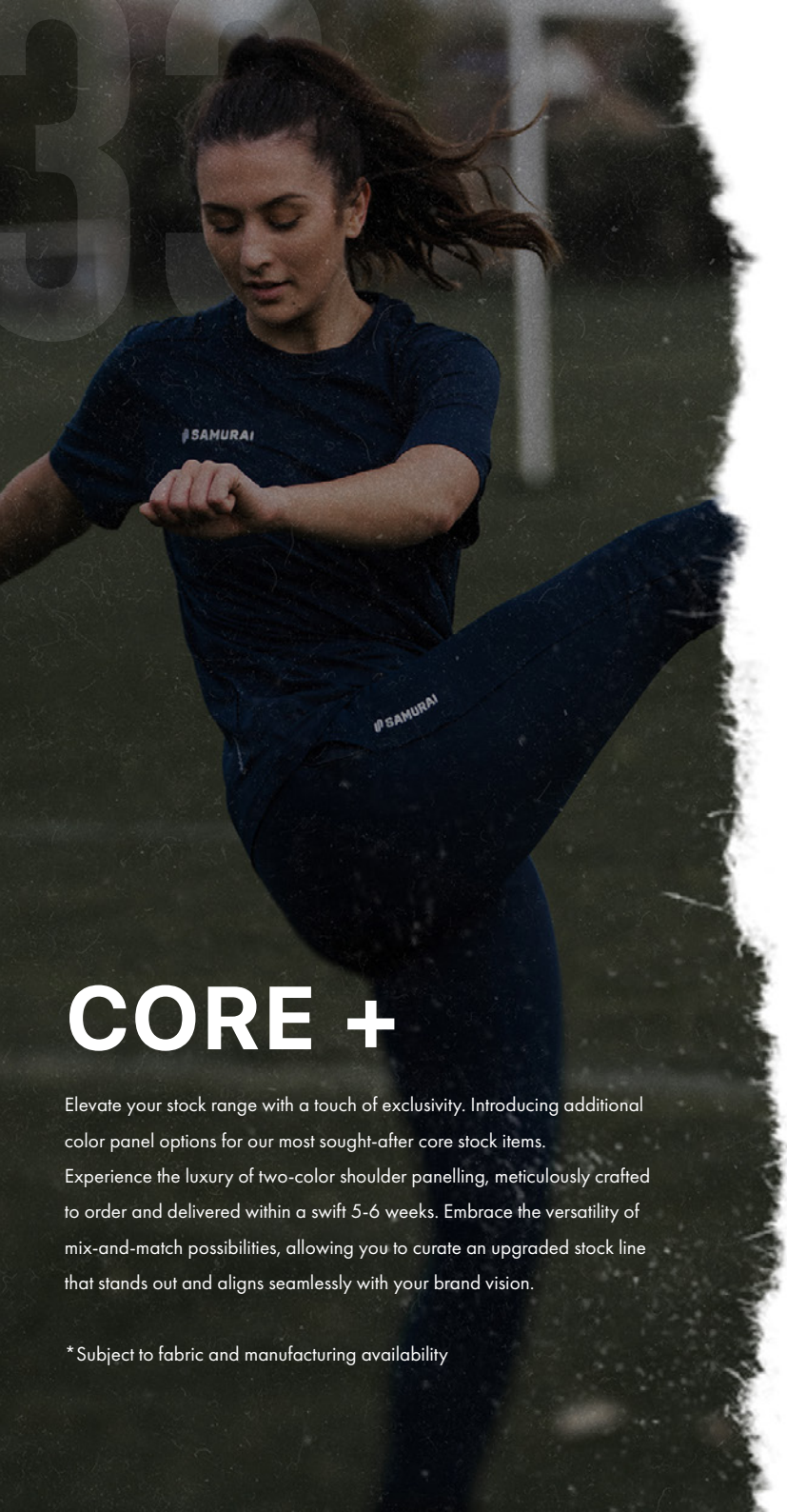


TAPERED TRACK PANT



TRACK PANT

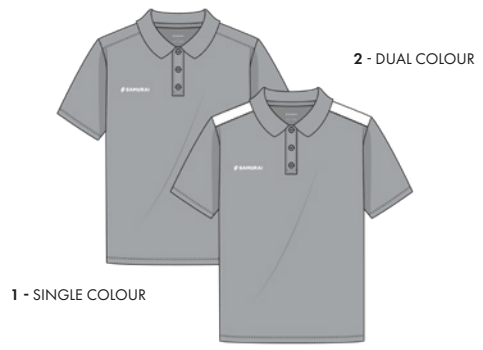
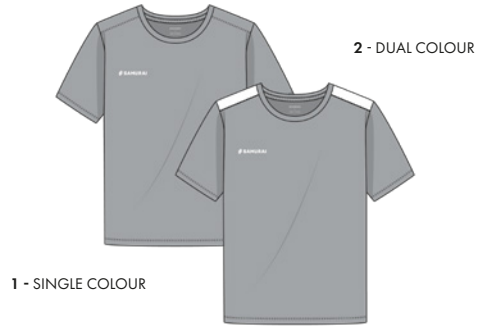




# CORE +

Elevate your stock range with a touch of exclusivity. Introducing additional color panel options for our most sought-after core stock items. Experience the luxury of two-color shoulder panelling, meticulously crafted to order and delivered within a swift 5-6 weeks. Embrace the versatility of mix-and-match possibilities, allowing you to curate an upgraded stock line that stands out and aligns seamlessly with your brand vision.

\*Subject to fabric and manufacturing availability



## PERFORMANCE TEE

With maximum wicking functionality and designed to be breathable, our EP Tee is built for optimum movement. Keeping you at your peak performance level.

<b>FABRIC</b>	SMOOTH INTERLOCK
<b>FIT</b>	UNISEX - ATHLETIC FIT
<b>STYLE</b>	<b>SINGLE OR DUAL COLOUR</b>
<b>SIZES</b>	YOUTH: XS - S - M - L    SENIOR: XXS - XS - S - M - L - XL - 2XL - 3XL



## PERFORMANCE POLO

Built with a moisture management system, this polo wicks sweat away from the Skin keeping you cool and dry. Lightweight and anti-bacterial resistant and designed in an athletic fit block.

<b>FABRIC</b>	DIAMOND POLYESTER
<b>FIT</b>	UNISEX - ATHLETIC FIT
<b>STYLE</b>	<b>SINGLE OR DUAL COLOUR</b>
<b>SIZES</b>	YOUTH: XS - S - M - L    SENIOR: XXS - XS - S - M - L - XL - 2XL - 3XL



# 29



### CLASSIC VEST

Breathable and lightweight in design, our Tech Vest is built with functionality in mind. Featuring our iconic Performex™ moisture management system.

<b>FABRIC</b>	DIAMOND POLYESTER
<b>FIT</b>	UNISEX - ATHLETIC FIT
<b>STYLE</b>	<b>SINGLE OR DUAL COLOUR</b>
<b>SIZES</b>	YOUTH: XS - S - M - L    SENIOR: XXS - XS - S - M - L - XL - 2XL - 3XL

**COLOUR AVAILABILITY (BASE & PANELS)**



1 - SINGLE COLOUR



### CLASSIC HOODIE

Timeless in design, built for a relaxed look. Featuring our cotton-rich fleece with a kangaroo pouch pocket and ribbed cuffs.

<b>FABRIC</b>	BRUSHED FLEECE
<b>FIT</b>	UNISEX - REGULAR FIT
<b>STYLE</b>	<b>SINGLE OR DUAL COLOUR</b>
<b>SIZES</b>	YOUTH: XS - S - M - L    SENIOR: XXS - XS - S - M - L - XL - 2XL - 3XL

**COLOUR AVAILABILITY (BASE & PANELS)**



2 - DUAL COLOUR

1 - SINGLE COLOUR



### QUARTER ZIP PULLOVER

The ideal mid-layer, remastered from our popular Quarter Zip Pullover. Built and designed to be breathable using our exclusive Performex™ fabric properties.

<b>FABRIC</b>	LIGHTWEIGHT MATT POLY FLEECE
<b>FIT</b>	UNISEX - ATHLETIC FIT
<b>STYLE</b>	<b>SINGLE OR DUAL COLOUR</b>
<b>SIZES</b>	YOUTH: XS - S - M - L    SENIOR: XXS - XS - S - M - L - XL - 2XL - 3XL

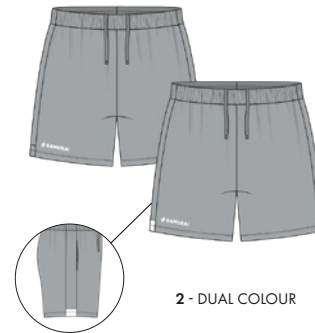
**COLOUR AVAILABILITY - BASE**



**COLOUR AVAILABILITY - PANELLING**



1 - SINGLE COLOUR



### MULTISPORT SHORT

Built with our high tensile strength Taslon Polyester fabric with Waffle-Knit panels and inserts for ease and freedom of movement. 5" inseam as standard with slider pockets.

<b>FABRIC</b>	TASLON POLYESTER WITH WAFFLE-KNIT PANELS
<b>FIT</b>	UNISEX - REGULAR FIT
<b>STYLE</b>	<b>SINGLE OR DUAL COLOUR</b>
<b>SIZES</b>	YOUTH: XS - S - M - L    SENIOR: XXS - XS - S - M - L - XL - 2XL - 3XL - 4XL

**COLOUR AVAILABILITY - BASE**



**COLOUR AVAILABILITY - PANELLING**



2 - DUAL COLOUR

**NAVIGATOR JACKET**

ONYX BLACK

**SAMURAI**



**AZURA JACKET**

A complete water repellent jacket - designed to protect from the elements. Created with a drop tail hem for extra coverage and breathable underarm panelling offering both function and comfort when needed most.

<b>FIT</b>	ATHLETIC
<b>TYPE</b>	CUT & SEW
<b>FABRIC</b>	TASLAN NYLON OR SMOOTH WOVEN



Additional colours available for trim and piping



**SOFTSHELL JACKET**

Manufactured in our water-repellent and windproof fabric providing both function and comfort - the ideal jacket to protect from the elements all year round.

<b>FIT</b>	REGULAR
<b>TYPE</b>	CUT & SEW
<b>FABRIC</b>	PU COATED BONDED SOFT SHELL



Additional colours available for trim and piping



**NAVIGATOR JACKET**

Manufactured in our water repellent Smooth Nylon fabric with 6oz wadding to provide full coverage. Featuring a full hood and a drop tail hem.

<b>FIT</b>	REGULAR
<b>TYPE</b>	CUT & SEW
<b>FABRIC</b>	SMOOTH WOVEN



**BLIZZARD JACKET**

Designed in a throw-back retro look offering multiple colour combinations adapting to fit your style. Constructed with light wadding for additional warmth and comfort.

<b>FIT</b>	ATHLETIC
<b>TYPE</b>	CUT & SEW
<b>FABRIC</b>	PU COATED TASLAN NYLON



Additional colours available for trim and piping

**SIZE RANGE**

MENS:           XXS - XS - S - M - L - XL - 2XL - 3XL - 4XL - 5XL  
 JNR BOYS:   JM - JL - YXS - YS - YM - YL  
 WOMENS:    XXS - XS - S - M - L - XL - 2XL - 3XL - 4XL  
 JNR GIRLS:   JM - JL - YXS - YS - YM - YL

SAMURAI Core brings you two exclusive ranges, Elite Performance and Utility, comprising brand new premium products and updates of some of our old favourites - all designed and manufactured in our exclusive fabrics to keep you at your peak performance level.

SAMURAI-SPORTS.COM



 SAMURAI

# CORE STOCK

VEST, TEES & SHORTS

TOPS

BOTTOMS

JACKETS

BAGS

ACCESSORIES



NEW FOR 2024/25

## WOMENS VEST

With maximum wicking functionality and designed to be breathable, our Women's vest is built for optimum movement. Keeping you at your peak performance level. A modernised Performance Vest.

<b>FABRIC</b>	DIAMOND POLYESTER
<b>FIT</b>	WOMENS FIT
<b>SIZES</b>	YOUTH: XS - S - M - L SENIOR: XXS - XS - S - M - L - XL - 2XL - 3XL
<b>COLOURS</b>	ONYX BLACK & OXFORD NAVY



NEW FOR 2024/25

## WOMENS TEE

With maximum wicking functionality and designed to be breathable, our Women's Tee is built for optimum movement. Keeping you at your peak performance level. A modernised Performance Tee.

<b>FABRIC</b>	SMOOTH INTERLOCK
<b>FIT</b>	WOMENS FIT
<b>SIZES</b>	YOUTH: XS - S - M - L SENIOR: XXS - XS - S - M - L - XL - 2XL - 3XL
<b>COLOURS</b>	ONYX BLACK & OXFORD NAVY



## WOMENS PIQUE POLO

A traditional polo design with a fitted waist for a more feminine fit. Featuring a ribbed collar and cuff detail. A modernised Lifestyle Polo.

<b>FABRIC</b>	PIQUE KNIT COTTON
<b>FIT</b>	WOMENS FIT
<b>SIZES</b>	YOUTH: XS - S - M - L SENIOR: XXS - XS - S - M - L - XL - 2XL - 3XL
<b>COLOURS</b>	ONYX BLACK, PURE WHITE & OXFORD NAVY



## PERFORMANCE POLO

Built with a moisture management system, this polo wicks sweat away from the skin keeping you cool and dry. Lightweight and anti-bacterial resistant and designed in an athletic fit block.

<b>FABRIC</b>	DIAMOND POLYESTER
<b>FIT</b>	UNISEX - ATHLETIC FIT
<b>SIZES</b>	YOUTH: XS - S - M - L SENIOR: XXS - XS - S - M - L - XL - 2XL - 3XL
<b>COLOURS</b>	ONYX BLACK & OXFORD NAVY



## CLIPPER SHORT

Built with our high tensile strength Taslon Polyester fabric with Waffle-Knit panels and inserts for ease and freedom of movement. 5" inseam as standard with slider pockets.

<b>FABRIC</b>	TASLON POLYESTER WITH WAFFLE-KNIT PANELS
<b>FIT</b>	UNISEX - REGULAR FIT
<b>SIZES</b>	YOUTH: XS - S - M - L SENIOR: XXS - XS - S - M - L - XL - 2XL - 3XL - 4XL
<b>COLOURS</b>	ONYX BLACK & OXFORD NAVY

NEW FOR 2024/25



## WOMENS MULTISPORT SHORT

The specialist womens multisport short option, developed with expert flex-fit panelling for unrestricted movement and optimum support.

<b>FABRIC</b>	TASLON POLYESTER WITH STRETCH PANEL
<b>FIT</b>	WOMENS FIT
<b>SIZES</b>	YOUTH: XS - S - M - L SENIOR: XXS - XS - S - M - L - XL - 2XL - 3XL
<b>COLOURS</b>	ONYX BLACK & OXFORD NAVY





### WINDBREAKER

Built from our durable smooth woven fabric, this Wind Breaker is hard-wearing and water resistant, protecting you from the elements. With a mesh lining and stretch underarm panels for maximum mobility.

<b>FABRIC</b>	SMOOTH WOVEN FABRIC
<b>FIT</b>	UNISEX - REGULAR FIT
<b>SIZES</b>	YOUTH: XS - S - M - L    SENIOR: XXS - XS - S - M - L - XL - 2XL - 3XL
<b>COLOURS</b>	ONYX BLACK & OXFORD NAVY



### SHIELD TRAINING TOP

An ideal accompaniment for wet or cold outdoor training, this top is constructed with a fleece lining for additional warmth and comfort. Full contact top.

<b>FABRIC</b>	BONDED SOFT SHELL
<b>FIT</b>	UNISEX - ATHLETIC FIT
<b>SIZES</b>	YOUTH: XS - S - M - L    SENIOR: XXS - XS - S - M - L - XL - 2XL - 3XL
<b>COLOURS</b>	ONYX BLACK & OXFORD NAVY



### CLASSIC HOODIE

Timeless in design, built for a relaxed look. Featuring our cotton-rich fleece with a kangaroo pouch pocket and ribbed cuffs.

<b>FABRIC</b>	BRUSHED FLEECE
<b>FIT</b>	UNISEX - REGULAR FIT
<b>SIZES</b>	YOUTH: XS - S - M - L    SENIOR: XXS - XS - S - M - L - XL - 2XL - 3XL
<b>COLOURS</b>	ONYX BLACK & OXFORD NAVY



### TECH ZIP HOODIE

Built in our Matt Poly Fleece fabric, our Tech Zip Hoodie offers optimum comfort. Minimal in design, giving this full zip hoodie an effortless and professional look. With concealed side zip pockets.

<b>FABRIC</b>	LIGHT WEIGHT MATT POLY FLEECE
<b>FIT</b>	UNISEX - ATHLETIC FIT
<b>SIZES</b>	YOUTH: XS - S - M - L    SENIOR: XXS - XS - S - M - L - XL - 2XL - 3XL
<b>COLOURS</b>	ONYX BLACK & OXFORD NAVY



### QUARTER ZIP PULLOVER

The ideal mid-layer, remastered from our popular Quarter Zip Pullover. Built and designed to be breathable using our exclusive Performex™ fabric properties.

<b>FABRIC</b>	LIGHTWEIGHT MATT POLY FLEECE
<b>FIT</b>	UNISEX - ATHLETIC FIT (BLOCK 2.0)
<b>SIZES</b>	YOUTH: XS - S - M - L    SENIOR: XXS - XS - S - M - L - XL - 2XL - 3XL
<b>COLOURS</b>	ONYX BLACK & OXFORD NAVY

PIQUE POLO

PAGE 32



ACTIVE PANT

Combining aspects from our two most popular products to create pants built for comfort and outdoor training. With an inner comfort waistband, soft-feel mesh lining and a fully elasticated hem for a secure fit around the ankle.

<b>FABRIC</b>	MICROLIGHT RIPSTOP
<b>FIT</b>	UNISEX - ATHLETIC FIT
<b>SIZES</b>	YOUTH: XS - S - M - L SENIOR: XXS - XS - S - M - L - XL - 2XL - 3XL
<b>COLOURS</b>	ONYX BLACK & OXFORD NAVY



WOMENS TAPERED TRACK PANT

Built for women, these training pants have a slightly slimmer fit than our unisex equivalent, with a moderately higher waistband and a neater rise around the hips for a more flattering fit. Featuring a tapered leg with soft ribbed back calf panels.

<b>FABRIC</b>	LIGHTWEIGHT MATT POLY FLEECE
<b>FIT</b>	WOMENS FIT
<b>SIZES</b>	YOUTH: XS - S - M - L SENIOR: XXS - XS - S - M - L - XL - 2XL - 3XL
<b>COLOURS</b>	ONYX BLACK & OXFORD NAVY



LEGGINGS

Built for elite performance, these high power stretch leggings offer a full contoured fit and security. Featuring side pockets and contoured flat seaming.

<b>FABRIC</b>	POLYESTER ELASTANE
<b>FIT</b>	WOMENS FIT
<b>SIZES</b>	YOUTH: XS - S - M - L SENIOR: XXS - XS - S - M - L - XL - 2XL - 3XL
<b>COLOURS</b>	ONYX BLACK & OXFORD NAVY

TAPERED TRAINING PANT

ONYX BLACK

SAMURAI



### GILET

Built for warmth and protection, without compromising on movement. Featuring a chevron stitching detail in a lightweight showerproof nylon with cruelty-free synthetic down-effect wadding.

<b>FABRIC</b>	NYLON / SYNTHETIC WADDING
<b>FIT</b>	UNISEX - ATHLETIC FIT
<b>SIZES</b>	YOUTH: XS - S - M - L SENIOR: XXS - XS - S - M - L - XL - 2XL - 3XL
<b>COLOURS</b>	ONYX BLACK & OXFORD NAVY



### LIGHTWEIGHT JACKET

Built with our exclusive PU Laminated Woven Polyester showerproof fabric, our Shell Jacket offers both function and comfort whilst protecting you from the elements. Mesh lined with zippered pockets and a reflective tape feature.

<b>FABRIC</b>	WOVEN POLYESTER
<b>FIT</b>	UNISEX - ATHLETIC FIT
<b>SIZES</b>	YOUTH: XS - S - M - L SENIOR: XXS - XS - S - M - L - XL - 2XL - 3XL
<b>COLOURS</b>	ONYX BLACK & OXFORD NAVY



### NAVIGATOR JACKET

Manufactured in our water repellent Smooth Woven fabric with 6oz wadding to provide full coverage. Featuring a full hood and a drop tail hem.

<b>FABRIC</b>	SMOOTH WOVEN
<b>FIT</b>	UNISEX - REGULAR FIT
<b>SIZES</b>	YOUTH: XS - S - M - L SENIOR: XXS - XS - S - M - L - XL - 2XL - 3XL
<b>COLOURS</b>	ONYX BLACK & OXFORD NAVY



### LONGLINE PUFFER

Built with Polyester showerproof outer deep wadding and featuring chevron stitching detail for superior warmth and insulation. This calf length puffer also offers storm cuffs and hood.

<b>FABRIC</b>	SMOOTH WOVEN / SYNTHETIC WADDING
<b>FIT</b>	UNISEX - ATHLETIC FIT
<b>SIZES</b>	YOUTH: XS - S - M - L SENIOR: XXS - XS - S - M - L - XL - 2XL - 3XL
<b>COLOURS</b>	ONYX BLACK & OXFORD NAVY



### SUB COAT

Designed as the ultimate side-line coat with a deep pile fleece lining to ensure players are warm and match ready. Featuring deep side pockets, vented back hem and a chunky, quick release zip.

<b>FABRIC</b>	PU COATED TASLAN NYLON WITH DEEP - PILE FLEECE LINING
<b>FIT</b>	UNISEX - OVERSIZED FIT
<b>SIZES</b>	S = (YOUTH: S - M - L) M = (SENIOR: XS - S - M) L = (SENIOR: L - XL - 2XL)
<b>COLOURS</b>	ONYX BLACK, BLAZE RED & OXFORD NAVY



ADD YOUR LOGO

## BACKPACK

An all-purpose backpack for everyday use. With a functional heavy duty handle and airflow vent section on the back. Featuring internal and external pockets for additional storage.

**FABRIC:** HEAVYWEIGHT POLYESTER  
**SIZE:** 48 X 34 X 20CM  
**COLOURS:** ONYX BLACK & OXFORD NAVY



## GYM BAG

A classic lightweight multi-purpose shoulder bag - optimal for gym or leisure use. With drawstring straps, a sleek side zip compartment and internal pocket.

**FABRIC:** POLYESTER  
**SIZE:** 36.5 X 50CM  
**COLOURS:** ONYX BLACK



## BOOT BAG

Engineered with a wipe clean interior and outer. Including breathable mesh inserts to ensure good air flow and to keep your kit stay fresh for longer. With external zip pockets and an easily accessible top flap.

**FABRIC:** HEAVYWEIGHT POLYESTER  
**SIZES:** 36 X 17 X 21CM  
**COLOUR:** ONYX BLACK



## MATCHDAY BAG

An elite heavyweight bag - the ideal size for a personal kit bag. With four external zipped pockets, an internal trinket pocket, padded handle and optional shoulder strap.

**FABRIC:** HEAVYWEIGHT POLYESTER  
**SIZES:** 66 X 36 X 30CM  
**COLOUR:** ONYX BLACK & OXFORD NAVY



## TOURIST BAG

Made with multiple pockets and sections to keep your items separate, safe and secure. Ideal for travel with a retractable pull handle on one end and two wheels. With a removable wet compartment, external zip pockets and zip support buckles.

**FABRIC:** HEAVYWEIGHT POLYESTER  
**SIZE:** 70 X 37 X 36CM  
**COLOUR:** ONYX BLACK



## WEEKEND BAG

Ideal for cabin luggage with a retractable handle, side carry handle and wheels for easier transport and travel.

**FABRIC:** POLYESTER  
**SIZE:** 53 X 20 X 33.5CM  
**COLOUR:** ONYX BLACK



## BEANIE

Our soft knitted beanie features a fold up cuff and a full fleece lining. Built for training and off-field wear.

<b>FABRIC</b>	ACRYLIC KNIT
<b>FIT</b>	UNISEX
<b>SIZES</b>	ONE SIZE
<b>COLOURS</b>	ONYX BLACK & OXFORD NAVY



## BOBBLE HAT

Our soft knitted beanie features a fold up cuff and a full fleece lining. Built for training and off-field wear.

<b>FABRIC</b>	ACRYLIC KNIT
<b>FIT</b>	UNISEX
<b>SIZES</b>	ONE SIZE
<b>COLOURS</b>	ONYX BLACK & OXFORD NAVY



## WATER BOTTLE

Featuring a durable rubber stop cap and a liquid capacity of up to 800ml.

<b>MATERIAL:</b>	PLASTIC
<b>SIZE:</b>	800 ML
<b>COLOUR:</b>	ONYX BLACK



## ANKLE SOCK

Suitable for any occasion, comfortable and durable - from the most intense gym session to everyday life. Cotton Comfort Foot - a soft padded sole which provides you with enhanced comfort and control.

<b>FABRIC:</b>	ORGANIC COTTON
<b>FIT:</b>	UNISEX
<b>SIZE:</b>	M: 3-6 / L: 7-11 / XL: 12-14
<b>COLOUR:</b>	PURE WHITE



## REVERSIBLE TRAINING BIB

A professional reversible training vest, created with soft feel binding to ensure maximum comfort whilst training.

<b>FABRIC</b>	HEAVYWEIGHT EYELET POLYESTER
<b>FIT</b>	UNISEX - REGULAR FIT
<b>SIZES</b>	S - M - L
<b>COLOURS</b>	ROYAL/RED & YELLOW/GREEN

WOMENS TEE

PAGE 32

 SAMURAI

TAPERED TRAINING PANT

PAGE 34

 SAMURAI

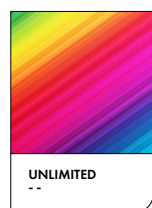
CORE STOCK



## CUT & SEW COLOUR STOCK OPTIONS

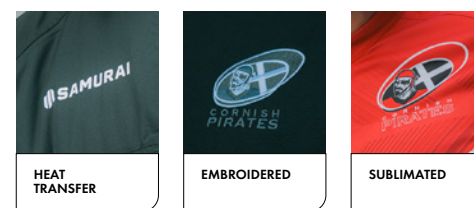
With an extensive collection of fabrics that boast superior performance functionalities, our cut & sew fabrics are available in a wide selection of colours\* to help you find the right fit for you.

\*Fabric and colour options subject to availability.



## SUBLIMATED COLOUR OPTIONS

Sublimation offers an unlimited array of colours, we will colour match to your chosen Pantone Solid Coated colour, offering you a huge selection to choose from.



## EMBELLISHMENTS

It's not a complete kit without your club crest. We offer a range of different options to best display your team's logos - from striking heat transfers to premium complex embroideries - find a finish that works best for you.

# 40

## COMPETITION FIT

A full body contouring jersey with curved droptail hem & sculpted sleeves. This Jersey is skin tight and used by Leicester Tigers, Exeter Chiefs and other Elite teams.

## ATHLETIC FIT

A more streamlined fitting silhouette. Designed to be tighter fitting for a more athletic physique.

## REGULAR FIT

A more relaxed, looser fitting silhouette. Not tailored to a specific body shape.

### UNISEX (VAT Applicable)

	XXS	XS	S	M	L	XL	2XL	3XL	4XL	5XL
To fit chest (inches)	36"	38"	40"	42"	44"	46"	48"	50"	52"	54"
To fit waist (inches)	29"	30"	32"	34"	36"	38"	40"	42"	44"	46"
To fit chest (cms)	87	92	102	107	112	117	122	127	132	137
To fit waist (cms)	74	76	82	87	92	97	102	107	112	117

### WOMEN (VAT Applicable)

	XXS	XS	S	M	L	XL	2XL	3XL	4XL
To fit chest (inches)	30"	32"	34"	36"	38"	40"	42"	44"	46"
To fit waist (inches)	24"	25"	26"	28"	30"	32"	34"	36"	38"
To fit chest (cms)	76	82	87	92	97	102	107	112	117
To fit waist (cms)	61	64	66	71	76	82	87	92	97

### CHILDREN

	JUNIOR				YOUTH			
	XS	S	M	L	XS	S	M	L
To fit chest (inches)	19"	21"	23"	25"	27"	29"	31"	33"
To fit waist (inches)	18"	20"	22"	23"	24"	25"	27"	28"
To fit chest (cms)	49	54	59	64	69	74	79	84
To fit waist (cms)	46	51	56	59	61	64	69	71





**E:** [INFO@SAMURAI-SPORTS.COM](mailto:INFO@SAMURAI-SPORTS.COM)

**T:** 01508 531010

**W:** [SAMURAI-SPORTS.COM](http://SAMURAI-SPORTS.COM)

**NORFOLK HQ:**

GF2 ROXBURGH HOUSE  
ROSEBERY BUSINESS PARK  
NORWICH  
NR14 7XP

**LONDON HQ:**

UNIT 203 CREMER BUSINESS CENTRE  
37 CREMER STREET  
LONDON,  
E2 8HD