






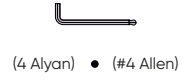


NC 700 / 750 S 2012-2020 Uyumlu Orta Sehpa • NC 700 / 750 S 2012-2020 Compatible Center Lift Paddock

No	Adet • Qty.	Parça • Parts	No	Adet • Qty.	Parça • Parts
A	1x	 (Orta Sehpa) (Center Lift Paddock)	E	1x	 (Büyük Yay) (Thick String)
B	1x	 (Orta Mil) (Middle Axle)	F	1x	 (Küçük Yay) (Thin String)
C	1x	 (Özel Civata) (Special Bolt)	G	1x	 (Corta Takoz) (Wedge Gasket)
D	1x	 (6x16 Pul Başlı Civata) (6x16 Washer Head Bolt)			

Gerekli Aletler • Required Tools

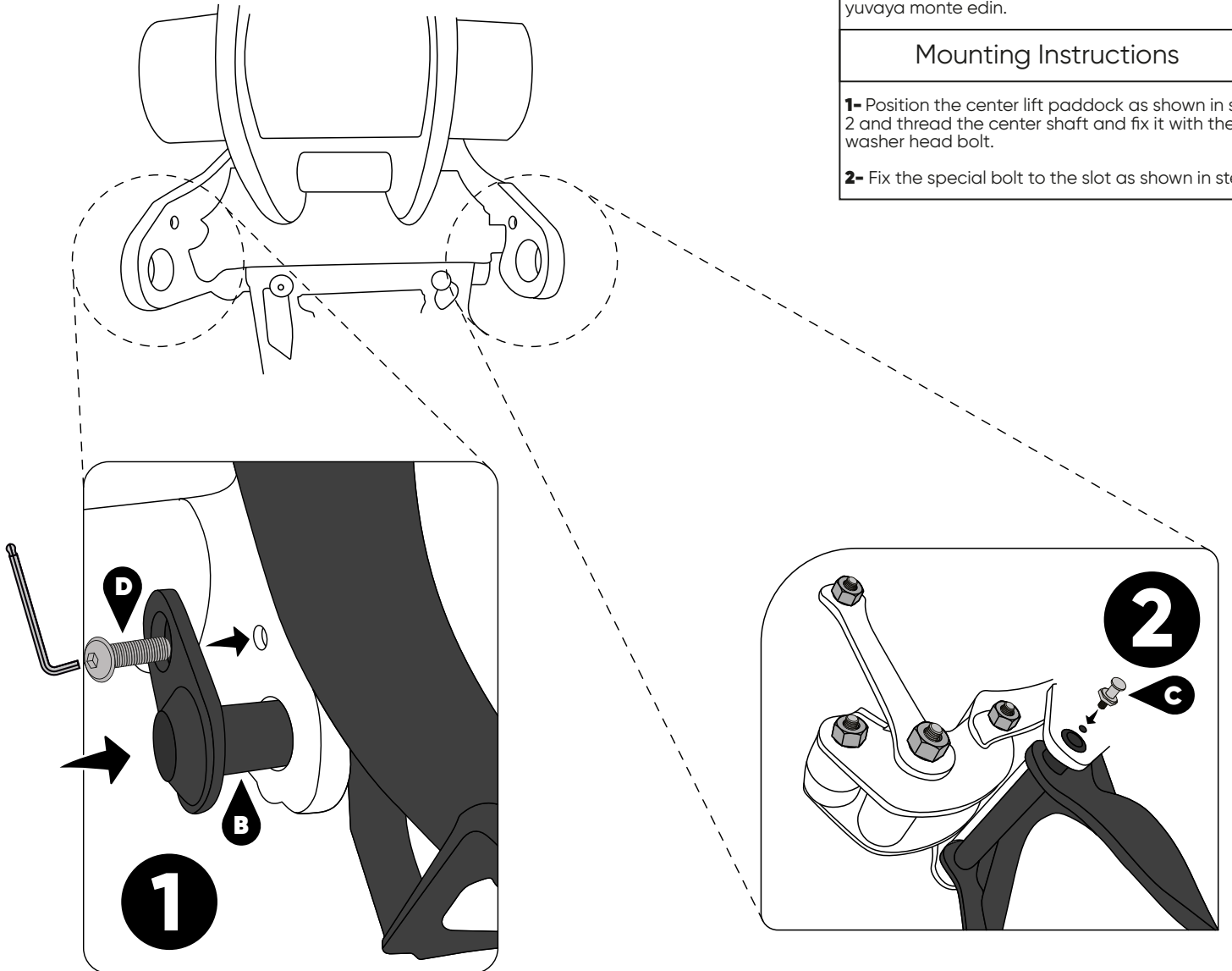


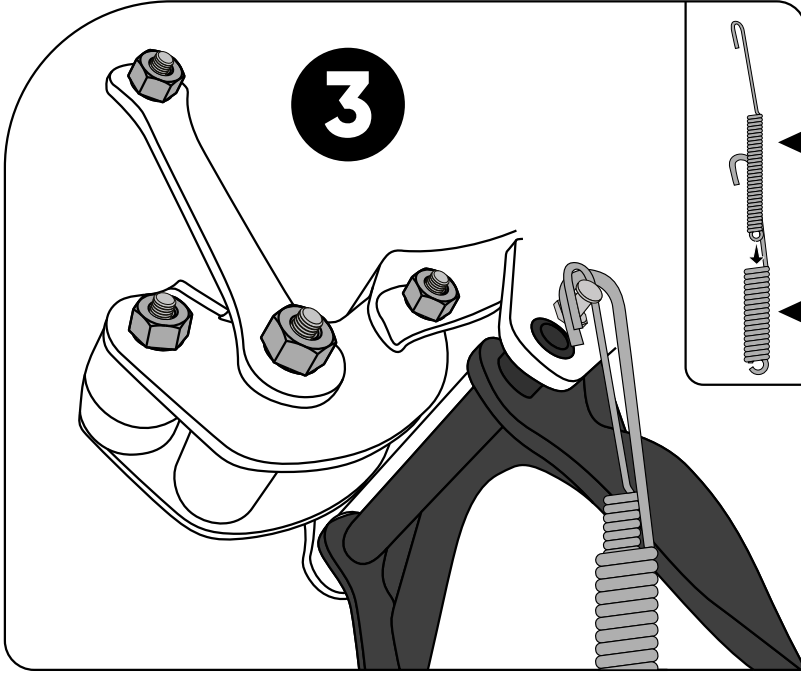
Montaj Talimatları

- 1- Orta sehpayı aşama 1 ve 2'de gösterildiği gibi konumlandırın, orta mili deliklerden geçirin ve pul başlı civatayla sabitleyin.
- 2- Aşama 2'de gösterildiği gibi özel civatayı gösterilen yuvaya monte edin.

Mounting Instructions

- 1- Position the center lift paddock as shown in steps 1, 2 and thread the center shaft and fix it with the washer head bolt.
- 2- Fix the special bolt to the slot as shown in step 2.





### Montaj Talimatları

- 3-** Yayları iç içe geçirin ve kancalarını özel civataya gelecek şekilde geçirin.
- 4-** Yayların alt tarafındaki kancalar aşama 4'te gösterilen yere sabitleyin. Ardından conta takozunu orta sehpa üzerindeki yuvaya geçirin.

### Mounting Instructions

- 3-** Engage the springs and insert their hooks into the special bolt.
- 4-** Fix the hooks on the underside of the springs in the place shown in step 4. Then insert the gasket into the slot on the center stand.

