



YOUR PARTNER FOR THE BEST QUALITY

(Registered Copy)

TEST REPORT

15, Jongga-ro, Jung-gu, Ulsan, 681-802 Rep. of KOREA

TEL 82-52-220-3000

FAX 82-52-220-3001

Sample : PVC

Testing Date : Jul.14.2014 ~ Jul.22.2014

Testing Environment : Temperature (20 ± 5) °C, Relative humidity (40 ± 20) %

Test method : Refer to following pages

Test result : Refer to following pages

Attachment : Flow chart and Sample pictures

USAGE : QUALITY CONTROL

Cho Duwan

Prepared by Cho Duwan
Tel: +82-52-220-3168
E-mail: dwcho@ktr.or.kr

Moon Sang-ho

Reviewed by Moon Sang-ho
Technical Manager
E-mail: giseng@ktr.or.kr

Jul.22.2014

Korea Testing & Research Institute

President

Choi Hyeonk'



Registered copy date: Jul.23.2014

전자문서본(Electronic Copy)



TEST REPORT

Sample : PVC

TEST RESULT

Test Items	Unit	Sample	Results	MDL	Test Methods
Pb	mg/kg	-	Not Detected	5	IEC 62321 Ed.1 (ICP)
Cd	mg/kg	-	Not Detected	1	IEC 62321 Ed.1 (ICP)
Hg	mg/kg	-	Not Detected	1	IEC 62321 Ed.1 (CV-AAS)
Cr6+	mg/kg	-	Not Detected	1	IEC 62321 Ed.1 (UV/Vis)
Total-PBBs	mg/kg	-	Not Detected	-	IEC 62321 Ed.1.0b : 2008(GC/MS)
Mono-BB	mg/kg	-	Not Detected	10	IEC 62321 Ed.1.0b : 2008(GC/MS)
Di-BB	mg/kg	-	Not Detected	10	IEC 62321 Ed.1.0b : 2008(GC/MS)
Tri-BB	mg/kg	-	Not Detected	10	IEC 62321 Ed.1.0b : 2008(GC/MS)
Tetra-BB	mg/kg	-	Not Detected	10	IEC 62321 Ed.1.0b : 2008(GC/MS)
Penta-BB	mg/kg	-	Not Detected	10	IEC 62321 Ed.1.0b : 2008(GC/MS)
Hexa-BB	mg/kg	-	Not Detected	10	IEC 62321 Ed.1.0b : 2008(GC/MS)
Hepta-BB	mg/kg	-	Not Detected	10	IEC 62321 Ed.1.0b : 2008(GC/MS)
Octa-BB	mg/kg	-	Not Detected	10	IEC 62321 Ed.1.0b : 2008(GC/MS)
Nona-BB	mg/kg	-	Not Detected	10	IEC 62321 Ed.1.0b : 2008(GC/MS)
Deca-BB	mg/kg	-	Not Detected	10	IEC 62321 Ed.1.0b : 2008(GC/MS)
Total-PBDEs	mg/kg	-	Not Detected	-	IEC 62321 Ed.1.0b : 2008(GC/MS)
Mono-BDE	mg/kg	-	Not Detected	10	IEC 62321 Ed.1.0b : 2008(GC/MS)
Di-BDE	mg/kg	-	Not Detected	10	IEC 62321 Ed.1.0b : 2008(GC/MS)
Tri-BDE	mg/kg	-	Not Detected	10	IEC 62321 Ed.1.0b : 2008(GC/MS)
Tetra-BDE	mg/kg	-	Not Detected	10	IEC 62321 Ed.1.0b : 2008(GC/MS)
Penta-BDE	mg/kg	-	Not Detected	10	IEC 62321 Ed.1.0b : 2008(GC/MS)
Hexa-BDE	mg/kg	-	Not Detected	10	IEC 62321 Ed.1.0b : 2008(GC/MS)
Hepta-BDE	mg/kg	-	Not Detected	10	IEC 62321 Ed.1.0b : 2008(GC/MS)
Octa-BDE	mg/kg	-	Not Detected	10	IEC 62321 Ed.1.0b : 2008(GC/MS)
Nona-BDE	mg/kg	-	Not Detected	10	IEC 62321 Ed.1.0b : 2008(GC/MS)
Deca-BDE	mg/kg	-	Not Detected	10	IEC 62321 Ed.1.0b : 2008(GC/MS)

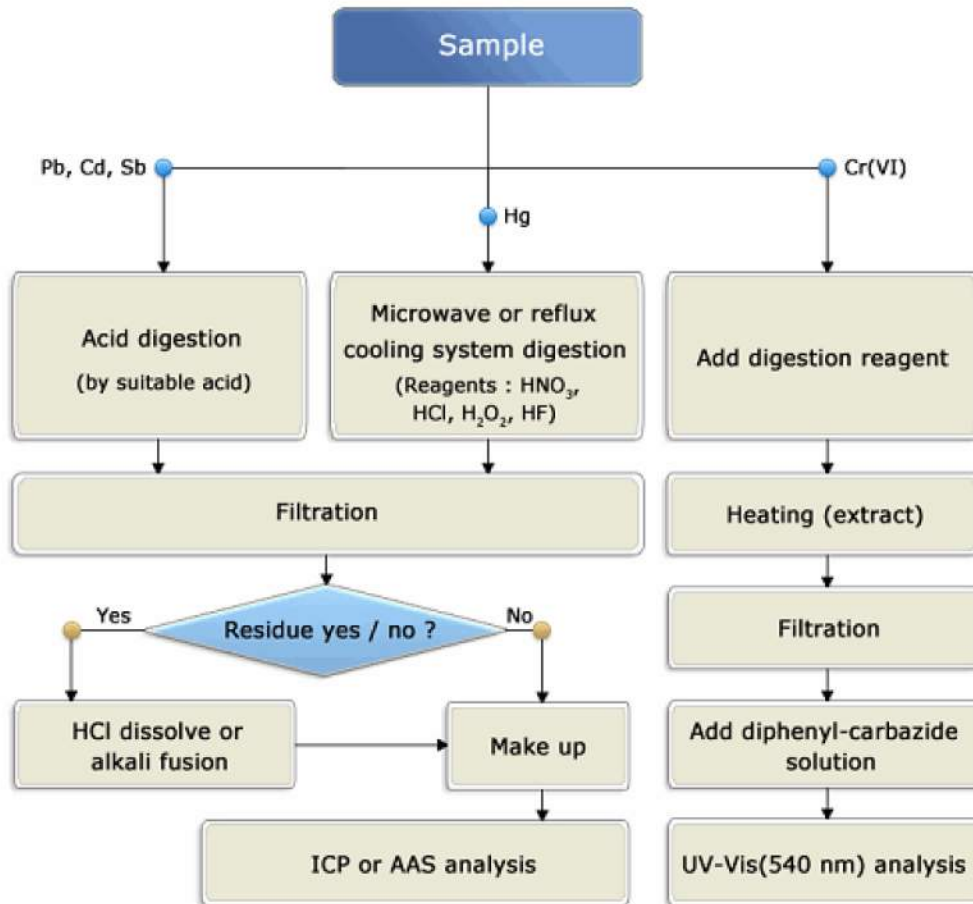
Notes : mg/kg = ppm (parts per million)
N.D. = Not detected (<MDL)
MDL = Method detection limit

TEST REPORT

Sample : PVC

Pb, Cd, Hg, Cr(VI) : Tested by Kim Sung-wan (Tel : 052-220-3147)

Flow chart of heavy metals analysis



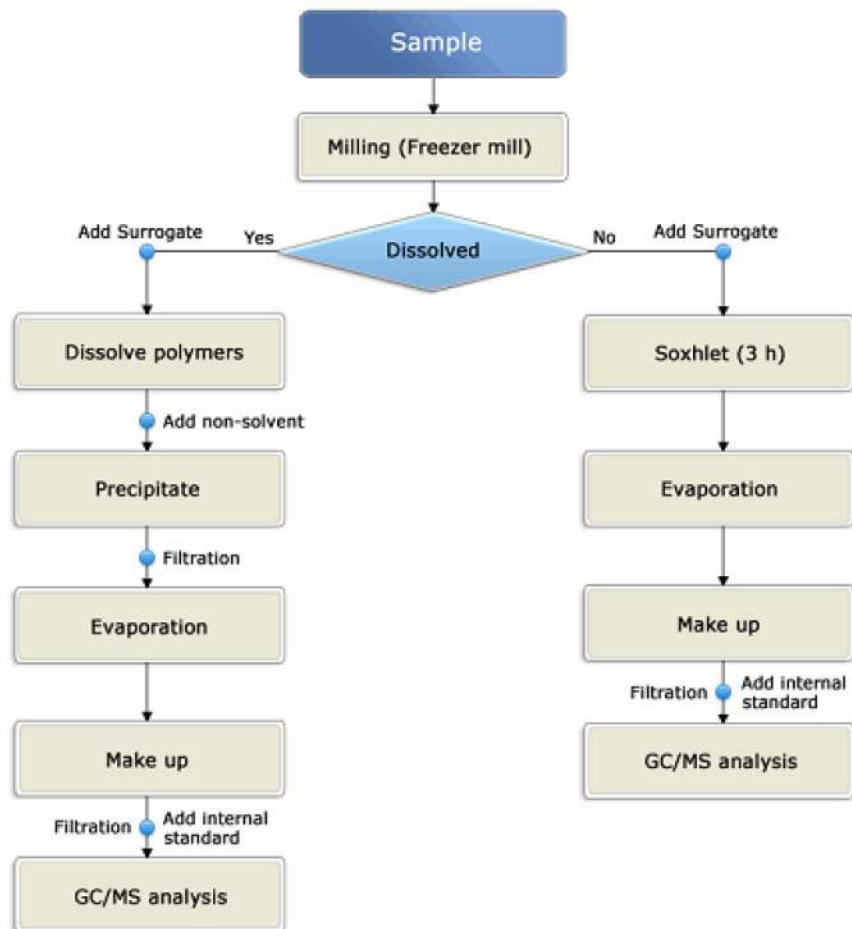


TEST REPORT

Sample : PVC

PBBs, PBDEs : Tested by Cho Duwan (Tel : 052-220-3168)

Flow chart of PBBs and PBDEs analysis





YOUR PARTNER FOR THE BEST QUALITY

TEST REPORT

Sample : PVC

Sample



- End of Report -