

000

CHIBATTERYSYSTEMS

THE GLADIATOR SERIES

FOR THE SUR RON AND SEGWAY

60 MAX

INSTRUCTIONAL GUIDE





SPECS

AH	60Ah
WH	3427
CONT. AMPS	420
PEAK AMPS	630
CONT. POWER	28KW
CHARGED VOLT	67.2V
VOLT CUT OFF	46.4V
CELL	MOLICEL 21700

For technical and support questions please reach out to Support@Chibatterysystems.com

FOLLOW US @chibatterysystems



WHAT'S IN YOUR HARDWARE KIT



HINGE NUT
X2



HINGE SCREW
X2



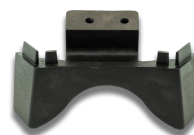
LATCH SCREW
X2



SHIM
X1



HINGE
X2



COWLING
X1



BASE PLATE
X1



RUBBER BLOCK
X1



TOUCH UP PEN
X1



WASHER
X4



PLUG
X1



CLICK HERE
FOR
INSTALL
VIDEO.

[iOS](#)
Download



**SMART
BMS**

Click iOS or Android
to Download

[Android](#)
Download

To connect to the app for the first time, you will want to make sure your Gladiator is plugged in and charging. Once this is achieved, you should be able to find your device in the app. To select the correct view, you will want to choose "single cell" when first entering the app.

The only things you will need to use within the app are the **voltage, temperature, and cell levels**. Other aspects of the app will give incorrect readings, so don't be alarmed if your app looks like it's giving strange readings, such as the amount of cycles.

READING YOUR SMART BMS CELL LEVELS

You will find your individual cell levels under the name *Battery Strings*. Every once in a while you will want to make sure everything is balanced and within tolerance. Cell levels should stay even, but as your battery is used there will be some variation. If you have any questions about cell level differences please reach out to our support team!



BATTERY HEALTH

Low voltage cutoff: If you are using an aftermarket controller, make sure to properly set the low voltage cutoff to protect your battery from draining to the point of no return.

- 60V Gladiators: The lowest we recommend is 46.4V, which is 2.9V per cell group.
- 66V Gladiators: The lowest we recommend is 52.2V, which is 2.9V per cell group.
- 72V Gladiators: The lowest we recommend is 58V, which is 2.9V per cell group.

Storing your battery: Batteries should be prepared for storage based on voltage, not percentage. They should be stored near nominal voltage and periodically checked and charged to ensure they remain within the following ranges:

- 60V Gladiators: between 54.4V–57.6V
- 66V Gladiators: between 61.2V–64.8V
- 72V Gladiators: between 68V–72V

Keep your battery in a dry, temperature controlled environment during periods of storage. Storing your battery near 0% or 100% can result in permanent degradation and damage.

Balance charging: Balance charging can be a preventative measure – it keeps the voltage difference between cell groups to a minimum and helps counter major imbalances before they can occur. We recommend performing a 48 hour balance charge every few months.