



VSE Needle Scalers

Operations & Maintenance

19NSVSE120
28NSVSE120
19NSVSE120K
28NSVSE120K



© Copyright 2014 by NOVATEK Corporation

All rights reserved printed in the United States of America. No part of this manual may be used or reproduced in any form or by any means, stored in data base or retrieval system, without prior written permission from NOVATEK Corporation.

Making copies of this manual for any purpose other than your own personal use is a violation of the United States copyright laws.

March 1, 2016 issue 1.0

Specifications subject to changes without notice!

If you have any questions, please contact us:

NOVATEK CORORATION

700 Schell Lane

Phoenixville, PA 19460

USA

www.novatekco.com

Toll Free 866 563-7800

Telephone: +1 610 363-7800

Fax +1 610 935-1945

Email: Sales@Novatekco.com

OPERATION AND MAINTENANCE MANUAL FOR VSE NEEDLE SCALERS

NOTICE

FOR PROFESSIONAL USE ONLY



WARNING



**IMPORTANT SAFETY INFORMATION ENCLOSED.
READ AND UNDERSTAND THIS MANUAL BEFORE OPERATING THIS PRODUCT.**

**IT IS YOUR RESPONSIBILITY TO MAKE THIS SAFETY INFORMATION
AVAILABLE TO OTHERS THAT WILL OPERATE THIS PRODUCT.**

FAILURE TO OBSERVE THE FOLLOWING WARNING COULD RESULT IN INJURY.



PLACING TOOL IN SERVICE

- Always install, operate, inspect and maintain this product in accordance with all applicable standards and regulations (local, state, country, federal, etc.).
- Compressed air models always use clean, dry air at 90 psi (6.2bar/620kPa) maximum air pressure at the inlet. Higher pressure may result in hazardous situations including excessive speed, rupture, or incorrect output torque or force.
- Electric models must always utilize proper gauge, and rated electrical cords with correct connections.
- Be sure all hoses and fittings are the correctly sized and secured.
- Ensure an accessible emergency shut off has been installed in the air or electrical supply line. Make others aware of its location.
- Do not use damaged, frayed, or deteriorated air hoses and fittings.
- Always use proper gauge electrical cords with correct connections. (When applicable.)
- Electric models must not use damaged, frayed, or deteriorated electrical cords and connections.
- Keep clear of whipping air hoses. Shut off the compressed air before approaching a whipping hose.
- Always turn off and disconnect the tool from its power supply before installing, removing or adjusting any accessory, or before performing any maintenance on the tool.
- Do not lubricate tools with flammable or volatile liquids such as kerosene, diesel or jet fuel. Use only recommended lubricants.
- Keep work area clean, uncluttered, ventilated and illuminated.
- Keep all electrical connections clear of water or other liquids. (When applicable.)
- Do not operate the machine while flammable or volatile liquids such as gasoline, diesel or jet fuel are present. Failure to do so can result in explosion. (When applicable.)
- Do not remove any labels. Replace any damaged label.

USING THE TOOL

- Always wear protection when operating or performing maintenance on this tool.
- Always wear hearing protection when operating this tool.
- Always use Personal Protective Equipment appropriate to the tool used and material worked. This may include dust mask or other breathing apparatus, safety glasses, ear plugs, gloves, apron, safety shoes, hard hat and other equipment,
- Prevent exposure and breathing of harmful dust and particles created by power tool use:
 - Some dust created by power sanding, sawing, and grinding, drilling, and other construction activities contains chemicals known to cause cancer, birth defects or other reproductive harm. Some examples of these chemicals are:
 - Lead from lead based paints,
 - Crystalline silica from bricks and cement and other masonry products, and
 - Arsenic and chromium from chemically treated lumber
- Your risk from these exposures varies, depending on how often you do this type of work. To reduce your exposure to these chemicals: work in a well ventilated area, and work with approved safety equipment, such as those dust masks that are specially designed to filter out microscopic particles.
- Keep others a safe distance from your work area, or ensure they use appropriate Personal Protective Equipment.
- This tool is not designed for working in explosive environments, including those caused by fumes and dust, or near flammable materials.

- Electrically powered tools are not insulated against electric shock.
- Be aware of buried, hidden or other hazards in your work environment. Do not contact or damage cords, conduits, pipes, or hoses that may contain electrical wires, explosive gases or harmful liquids.
- Keep hands, loose clothing, long hair and jewelry away from working end of tool.
- Power tools can vibrate in use. Vibration, repetitive motions or uncomfortable positions may be harmful to your hands and arms. Stop using any tool if discomfort, tingling feeling or pain occurs. Seek medical advices before resuming use.
- Keep body stance balanced and firm. Do not overreach when operating this tool. Anticipate and be alert for sudden changes in motion, reaction torques, or forces during startup and operation.
- Tool and/or accessories may briefly continue their motion after throttle is released,
- To avoid accidental starting – ensure tool in “off” position before applying air pressure or connecting to electricity. Avoid throttle when carrying, and release throttle with loss of air or electricity.
- Ensure work pieces are secure. Use clamps or vises to hold work piece whenever possible.
- Do not carry or drag the tool by the hose or power cord.
- Do not use power tools when tired, or under the influence of medication, drugs, or alcohol.
- Never us a damaged or malfunctioning tool or accessory,
- Do not modify the tool, safety devices, or accessories.
- Do not use this tool for purposed other than those recommended.
- Use accessories recommended by Novatek Corp.
- Never operate a tool with an accessory unless it is properly installed and the tool is held firmly against the work,
- Always use a retainer, when furnished, in addition to proper barriers to protect persons in surrounding or lower areas from possible ejected accessories.
- When wearing gloves and operating models with inside trigger, always be sure that the gloves will not prevent the trigger from being released.
- Wear safety shoes, hard hat, safety goggles, gloves, dust mask and any other appropriate protective clothing while operating the tool.
- Do no indulge in horseplay. Distraction can cause accidents.
- Keep hands and fingers away from the throttle lever until it is time to operate the tool.
- Never rest the tool on your foot.
- Never point the tool at anyone.
- Compressed air is dangerous. Never point an air hose at yourself or others.
- Never blow clothes free of dust with compressed air.
- Be sure all hose connections are tight. A loose hose not only leaks but can come completely off the tool and while whipping under pressure, can injure the operator and other in the area. Attach safety cables to all hosed to prevent injury in case a hose is accidentally broken.
- Never disconnect a pressurized air hose. Always turn off the air supply and bleed the tool before disconnecting a hose.
- When applicable, the operator must keep limbs and body clear of the chisel. If a chisel breaks, the tool with the broken chisel projecting from the tool will suddenly surge forward.
- Do not ride the tool with one leg over the handle. Injury can result if the chisel breaks while riding the tool.
- Know what is underneath the material being worked. Be alert for hidden water, gas, sewer, telephone or electric lines.
- Use only proper cleaning solvents to clean parts. Use only cleaning solvents which meet current safety and health standards. Use cleaning solvents in a well ventilated area.
- Do not flush the tool or clean any parts with diesel fuel. Diesel fuel residue will ignite in the tool when the tool is operated, causing damage to internal parts. When using models with outside triggers or throttle levers, take care when setting the tool down to prevent accidental operation.
- Do not operate the tool with broken or damaged parts.
- Never start the tool when it is lying on the ground.
- This tool is not designed for working in explosive atmospheres.



SECTION I

GENERAL

This operation and maintenance manual is furnished with each "VSE" Shrouded Needle Scaler Tool/Kit. It outlines the general operation and maintenance items critical to insure satisfactory, safe and long life of the Shrouded Needle Scaler and Accessories. This manual also includes service layouts and parts list for all configurations (A-E) of the "VSE" Shrouded Needle Scaler Tools and Kits.

READ ALL INSTRUCTIONS AND DATA IN THIS OPERATION AND MAINTENANCE MANUAL PRIOR TO OPERATION OF THIS EQUIPMENT.

These instructions are for your protection and convenience. Please read them carefully since failure to follow the precautions could result in injury. Whenever using electric powered equipment, basic safety precautions should be followed.

If after reading this manual anything seems unclear, contact a **NOVATEK** authorized distributor or **NOVATEK** directly by dialing 1-866-563-7800.

SECTION II

PRIOR TO USE

1. Ensure that sufficient length of 3/8" diameter hose is available and compatible with the tool's 1/4" NPT air inlet.
2. Tighten all hose connection fittings and blow out the air hose to insure that all debris is purged from the supply line.
3. Put a few drops of lubricant in the air inlet of the tool on a daily basis prior to start up and shut down. (See recommended air tool lubricants)
4. Inspect the tool's external parts, fittings and needle wear.

CAUTION: Do not inspect the tool without first disconnecting the air supply!

SECTION III

SELECTION OF CUFFS

1. Two cuff configurations are contained in the kit to support the "angle adjustable" (VSE) compatibility of the tool.
2. The flat cuff is most efficiently utilized on surfaces generally flat or with small variations of contour or in hard to reach places. The corner cuff is most effective on inside corners or hard to reach crevices. The outside edge cuff is designed to work on outside corners and protruding surfaces (28/PG only).
3. Operator experience will develop skills in the operation of the tool with proper selection of needle configuration and cuff selection to produce efficient removal of hazardous materials and desired surface for refinishing.
4. Contact **NOVATEK** or your local VSE distributor to discuss specific problems you may encounter in tool selection for coating removal and surface preparation.

LUBRICATION

1. Oil the tool daily by inputting a few drops into the air inlet fitting. Do not allow oil to enter the air supply hose. Whenever possible use clean oil from a sealed container.
2. Use only lubricants specifically designed for air tool lubrication and marked "for air or pneumatic tool use." Lubricants meeting 150 VG 22 grade or equivalent are recommended.
3. When tools are used in colder climates for prolonged periods under freezing conditions the air tool lubricant suggested for use is an anti-freeze type similar to KILFROST™.

SECTION V

PARTS LIST - A

28PG SHROUDED PISTOL GRIP NEEDLE SCALER (Part No: 28NSVSE120)

<u>REF #</u>	<u>PART #</u>	<u>DESCRIPTION</u>
1	28NS501	VALVE CAP
2	28NS502	"O" RING - VALVE CAP (10pack)
3	28NS503	VALVE SPRING
4	28NS504	VALVE STEM
5	28NS505	"O" RING - VALVE SEAT (10pack)
6	28NS506	VALVE BODY ASSEMBLY (COMPRISES ITEMS 1-8 INCLUSIVE)
7	28NS507	THROTTLE LEVER
8	28NS508	ROLL PIN
9	28NS509	PISTON
10	28NSVSE410	CYLINDER - VSE ONLY
11	28NS511	"O" RING - CYLINDER/SMALL (10pack)
12	28NS512	"O" RING - CYLINDER/LARGE (10pack)
14	28NSVSE428	COVER ASSEMBLY
18	28NS518P	RUBBER HANDLE GRIP
24	28NSVSE423	ANVIL
25	28NSVSE425	NEEDLE HOLDER 3mm
25A	28NSVSE424	NEEDLE HOLDER 2mm
26	NPK2010	NEEDLES 2mm (100pack)
	NPK2015	NEEDLES 2mm (250pack)
	NPK3120	NEEDLES 3mm (100pack)
	NPK3125	NEEDLES 3mm (250pack)
27	28NS527	SPRING - COMPRESSION
28	28NSVSE428	INTERMEDIATE TUBE - 8TPI
29	28NSVSE429	FRONT TUBE WITH VACUUM TAKE OFF
30	28NS530	CAP HEAD SCREW (10pack)
31	28NSVSE402	INTERNAL CORNER - FRONT CUFF
32	N/A	
33	28NSVSE401	FLAT SURFACE - FRONT CUFF

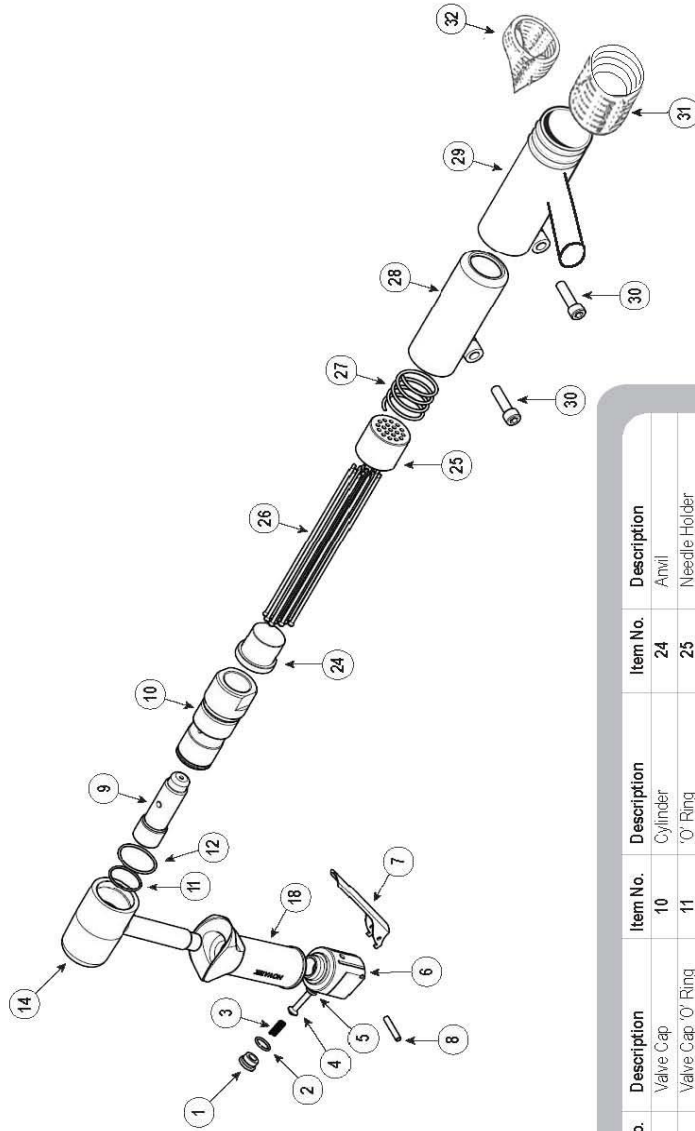
PARTS LIST - B

19PG SHROUDED PISTOL GRIP NEEDLE SCALER (Part No: 19NSVSE120)

<u>REF #</u>	<u>PART #</u>	<u>DESCRIPTION</u>
1	28NS501	VALVE CAP
2	28NS502	"O" RING - VALVE CAP (10pack)
3	28NS503	VALVE SPRING
4	28NS504	VALVE STEM
5	28NS505	"O" RING - VALVE SEAT (10pack)
6	28NS506	VALVE BODY ASSEMBLY (COMPRISES ITEMS 1-8 INCLUSIVE)
7	28NS507	THROTTLE LEVER
8	28NS508	ROLL PIN
9	19NS509	PISTON
10	19NS510	CYLINDER - VSE ONLY
11	19NS511	"O" RING - CYLINDER/SMALL (10pack)
12	19NS512	"O" RING - CYLINDER/LARGE (10pack)
14	19NS514	COVER ASSEMBLY
18	28NS518P	RUBBER HANDLE GRIP
24	19NSVSE423	ANVIL
25	19NSVSE425	NEEDLE HOLDER 3mm
25A	19NSVSE424	NEEDLE HOLDER 2mm
26	NPK2010	NEEDLES 2mm (100pack)
	NPK2015	NEEDLES 2mm (250pack)
	NPK3120	NEEDLES 3mm (100pack)
	NPK3125	NEEDLES 3mm (250pack)
27	19NS527	SPRING - COMPRESSION
28	19NSVSE428	INTERMEDIATE TUBE - 8TPI
29	19NSVSE429	FRONT TUBE WITH VACUUM TAKE OFF
30	28NS530	CAP HEAD SCREW (10pack)
31	19NSVSE402	INTERNAL CORNER - FRONT CUFF
32	19NSVSE401	FLAT SURFACE - FRONT CUFF

SERVICE LAYOUT
19 & 28PG SHROUDED NEEDLE SCALER w/ REFERENCE NUMBERS

19 & 28 PG VSE Needle Scaler



Item No.	Description	Item No.	Description	Item No.	Description
1	Valve Cap	10	Cylinder	24	Anvil
2	Valve Cap 'O' Ring	11	'O' Ring	25	Needle Holder
3	Valve Spring	12	'O' Ring	26	Needle
4	Valve Stem	13	-	27	Compression Spring
5	Valve Stem 'O' Ring	14	Cover Assembly	28	Intermediate Tube
6	Valve Body Assembly (Includes Items 1-8)	15	-	29	Front Tube
7	Throttle Lever	16	-	30	Cap Head Screw
8	Roll Pin	17	-	31	Flat Cuff
9	Piston	18	Rubber Handle Grip	32	Corner Cuff
		19-23	-		

NOVATEK CORPORATION LIMITED WARRANTY

The **TOOLS** manufactured by **NOVATEK CORPORATION** are warranted to be free from defects in material and workmanship for a period of **180 DAYS** from the date of purchase from **NOVATEK CORPORATION**. This warranty does not apply to accessories. All electrical components of the tool are also warranted to be free from defects in material and workmanship for a period of **180 DAYS**.

This warranty applies only to **TOOLS** purchased new from **NOVATEK CORPORATION**. This warranty does not apply to any **TOOL** which has been abused, misused, modified or repaired by someone other than **NOVATEK CORPORATION** or its authorized repair center.

If a **TOOL** proves defective in material or workmanship within one year of purchase from **NOVATEK CORPORATION**, it should be returned to **NOVATEK CORPORATION**, transportation pre-paid. The return must be authorized by a **RETURN MERCHANDISE AUTHORIZATION NUMBER (R.M.A. #)** obtained from **NOVATEK CORPORATION** prior to returning the **UNIT**. All packages must show clearly on the outside the return merchandise authorization number. All packages received without any R.M.A. # on the outside will be refused by **NOVATEK CORPORATION** receiving department.

Warranty claims will only be considered upon adequate proof of date of purchase. **NOVATEK CORPORATION** will, at its option, **REPAIR or REPLACE DEFECTIVE PARTS**. Repairs or replacements are warranted as above for the remainder of the original warranty period. The sole liability of **NOVATEK CORPORATION** and the user's exclusive remedy under this warranty is limited to the repair or replacement of the defective product.

THERE ARE NO OTHER WARRANTIES EXPRESSED OR IMPLIED AND **NOVATEK CORPORATION** SHALL NOT BE LIABLE FOR INCIDENTAL, CONSEQUENTIAL OR SPECIAL DAMAGES OR ANY OTHER EXPENSES OR REPAIR OR REPLACEMENT AS DESCRIBED ABOVE.

All warranty claims should be forwarded to:

NOVATEK CORPORATION
700 Schell Lane
Phoenixville, PA 19460

ATTENTION: CLAIM AND SERVICE DEPARTMENT
R.M.A. # _____

CALL Toll Free at 1-866-563-7800 for your RMA number prior to shipping.

Also include a brief description of the problem as well as a phone number, contact name and return address in case **NOVATEK CORPORATION** service personnel has to get in contact with you.