



Certified Pre-Owned

part#: K81018 CPO

Serial Number: 03 CPO 195



Insulation Blowing Machine

Exceptional Performance

Intec's highly portable and easy to use Cyclone insulation blowing machine simplifies Do-It-Yourselfers insulation activities. This simple to use system provides ease of transportation to the job site and timely installation of attic insulation – approximately ¾ hour to install R-19 cellulose and 1 hour to install R-19 fiberglass in a 1000 square foot attic.

Ease of Use

The system's control panel and wired remote provide for ease of operation from either the unit or the attic. Ease of transfer between retail location and jobsite is enabled by its small size & built-in wheels. Hose, connectors and clamps come standard -- everything you need to begin using immediately.

When looking for a capable, versatile, Do-It-Yourself unit with a track record of rigorous use, look no further than Intec's Cyclone.

Versatile Capabilities

The Cyclone comes equipped with a slide gate to control material flow -- providing its users sidewall retrofit capabilities in addition to attic installations. Be it cellulose drill & fill, or fiberglass dense pack, this system can do-it-all.



- ✓ New Blower Motor
- ✓ New Agitator Motor
- ✓ New Airlock Seals
- ✓ New Remote w/ Intec exclusive urethane jacketed controls
- ✓ New Electrical Panel
- ✓ New Slide Gate

303-833-6644

www.inteccorp.com

Rev: 20201009

Intec's Professional Grade Equipment



Engineered for High Productivity

Built-to-Last for High Value Generation



Insulation Blowing Machines



Specifications



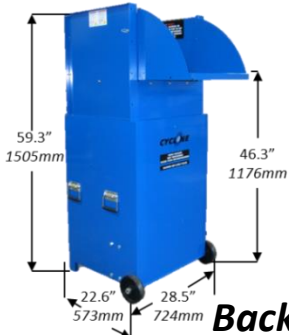
- Weight: 173lbs (78.6kg)
- Hose outlet: 2-1/2 inches (6.4cm)
- Power Requirements: 115VAC, 60Hz, 15 amp (20 amp recommended) or 230VAC, 50Hz, 10 amp
- Power Cord: 1 - 14/3 x 6 foot 'pigtail' provided.
- Remote Cord: 16/4 x 100'
- Warranty: 90 days limited.

Production Rates:

- | | |
|-------------------------|-------------------------|
| Cellulose: | Fiberglass: |
| • 39 bags/hr | • 8-1/2 bags/hr |
| • 970 lbs/hr (441kg/hr) | • 255 lbs/hr (116kg/hr) |

Accessories

Hopper Extension



Pressure Gauge



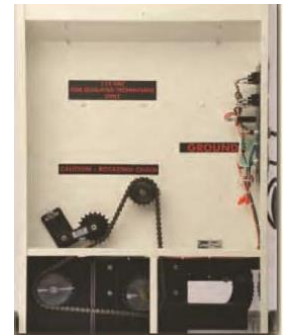
Machine Features



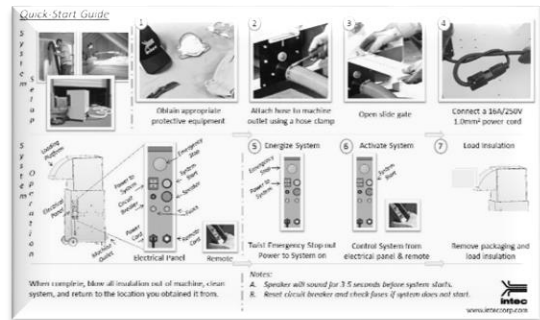
Control panel and wired remote provide ease of operation from either unit or location of install.



Slide gate adds to application versatility



Access panel simplifies maintenance



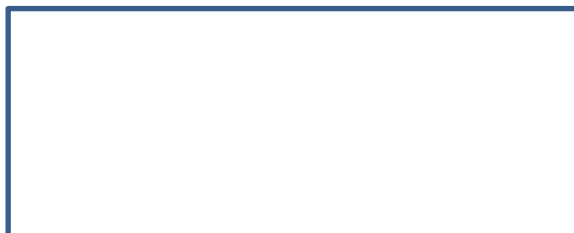
Quick-Start Guide simplifies user's experience

Backed by Intec's industry leading Technical Service.

Training & Accessories are available to increase your efficiencies.

The Intec Pledge

Provide the finest equipment in the industry while continuing to strive for 100% satisfaction.



Manufactured By



4040 Kodiak Court
Frederick, CO 80504



1-800-666-1611
www.inteccorp.com

Local: 303-833-6644
Fax: 303-833-6650
sales@inteccorp.com



Certified Pre-Owned

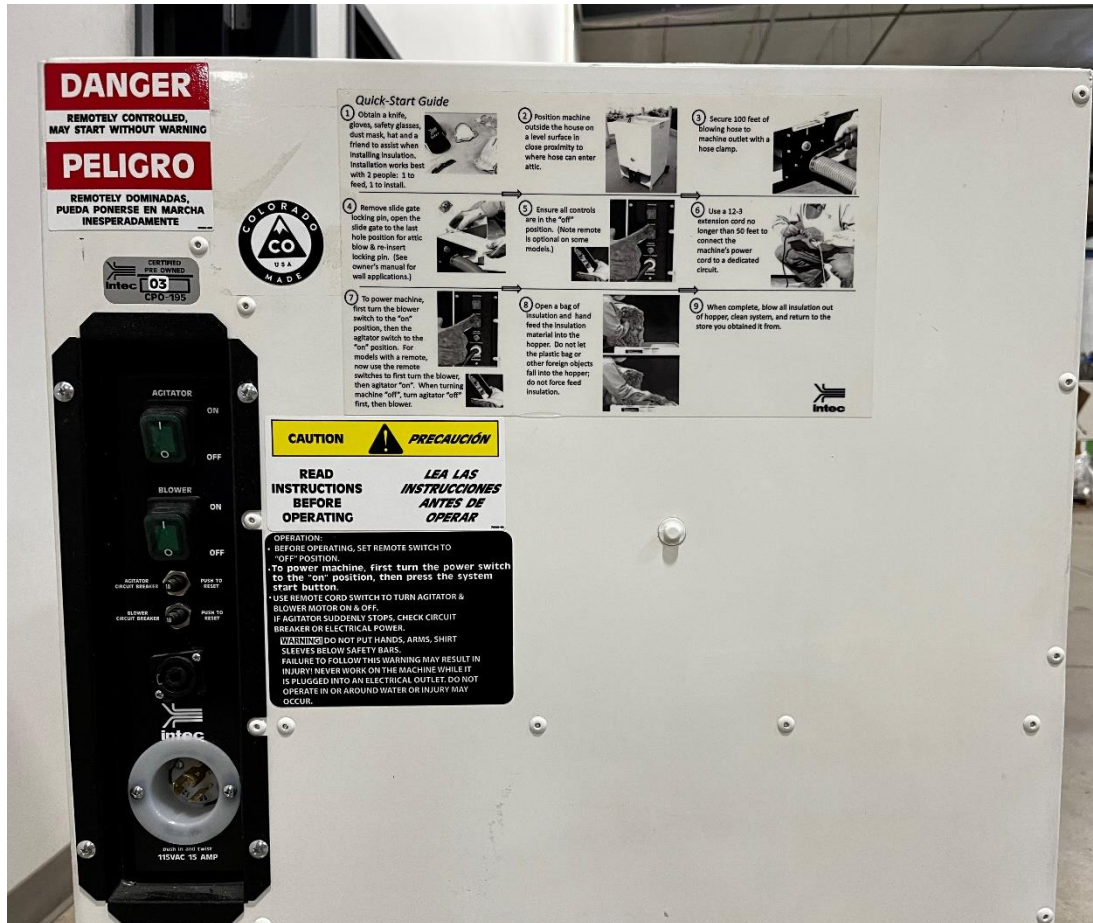
Views: Serial Number: 03 CPO 195





Certified Pre-Owned

Views: Serial Number: 03 CPO 195



DANGER

REMOTELY CONTROLLED,
MAY START WITHOUT WARNING

PELIGRO

REMOTELY CONTROLLED,
PUEDE PONERSE EN MARCHA
INESPERADAMENTE

CERTIFIED
PRE-OWNED
03
CPO-195



Quick-Start Guide

- Obtain a knife, gloves, safety glasses, dust mask, hat and a friend to assist when installing insulation. Installation works best with 2 people: 1 to feed, 1 to install.
- Remove slide gate locking pin, open the slide gate to the last hole position for attic blow & re-insert locking pin. (See owner's manual for well applications.)
- To power machine, first turn the blower switch to the "on" position, then the agitator switch to the "on" position. For models with a remote, now use the remote switches to first turn the blower, then agitator "on". When turning machine "off", turn agitator "off" first, then blower.
- Position machine outside the house on a level surface in close proximity to where hose can enter attic.
- Secure all controls are in the "off" position. (Note remote is optional on some models.)
- Open a bag of insulation and hand feed the insulation material into the hopper. Do not let the plastic bag or other foreign objects fall into the hopper; do not force feed insulation.
- Secure 100 feet of blowing hose to machine outlet with a hose clamp.
- Use a 12-3 extension cord no longer than 50 feet to connect the machine's power cord to a dedicated circuit.
- When complete, blow all insulation out of hopper, clean system, and return to the store you obtained it from.

CAUTION **PRECAUCIÓN**

READ INSTRUCTIONS BEFORE OPERATING **LEA LAS INSTRUCCIONES ANTES DE OPERAR**

OPERATION:

- BEFORE OPERATING, SET REMOTE SWITCH TO "OFF" POSITION.
- To power machine, first turn the power switch to the "on" position, then press the system start button.
- USE REMOTE CORD SWITCH TO TURN AGITATOR & BLOWER MOTOR ON & OFF. IF AGITATOR SUDDENLY STOPS, CHECK CIRCUIT BREAKER OR ELECTRICAL POWER.
- EXCLUDED DO NOT PUT HANDS, ARMS, SHIRT SLEEVES BELOW SAFETY BARS.
- FAILURE TO FOLLOW THIS WARNING MAY RESULT IN INJURY. NEVER WORK ON THE MACHINE WHILE IT IS PLUGGED INTO AN ELECTRICAL OUTLET. DO NOT OPERATE IN OR AROUND WATER OR INJURY MAY OCCUR.

AGITATOR ON OFF

BLOWER ON OFF

AGITATOR CIRCUIT BREAKER POWER TO MOTOR

BLOWER CIRCUIT BREAKER POWER TO MOTOR

intec

2008 12 01 110V 15 AMP



Certified Pre-Owned

Views: Serial Number: 03 CPO 195

