

PRODUCT SPECIFICATIONS

Contractor Rotating SRD Anchor

7395D

Features

- Rotating SRD Cradle
- Includes fasteners - 10pcs 1/4" x 2-1/2" lag screws and 20pcs 1/4"-14 x 2-1/2" sheet metal screws
- Carry handle slots

Material Specifications

Base Plate: *Zinc Plated Carbon Steel*

SRD Cradle: *Zinc Plated Carbon Steel*

Performance Specifications

Tensile Strength: *Min. 3,600 lbs tensile strength*

Max. Capacity: *310 lbs.**

**limited to PFAS used in conjunction with SRD Anchor*

Compatible SRDs

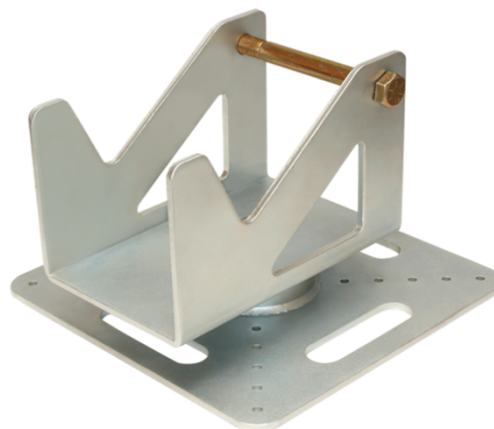
Contractor Cable 20' - 50': 727620, 727630, 727650 w/ Carabiner

Relevant Standards

OSHA: *CFR1926.502, CFR1910.66*

Warnings

- Read, understand and follow all labels and instructions prior to use.
- Inspect before each use.
- Remove from service if there is evidence of damage or excessive wear.
- Remove from service if there is any signs of activation.



FallTech 1306 S. Alameda St. Compton, CA 90221 Tele: 323-752-0066 www.falltech.com

WARNING: THIS SPECIFICATION SHEET PROVIDES AN OVERVIEW OF PRODUCTS AVAILABLE FROM FALLTECH. CARE HAS BEEN TAKEN TO ASSURE THE ACCURACY OF THE INFORMATION. IT DOES NOT PROVIDE IMPORTANT PRODUCT WARNINGS AND INSTRUCTIONS. FALLTECH RECOMMENDS ALL USERS OF FALL PROTECTION EQUIPMENT UNDERGO THOROUGH TRAINING, AND THAT ALL WARNINGS AND INSTRUCTIONS PROVIDED WITH THESE PRODUCTS BE THOROUGHLY READ UNDERSTOOD PRIOR TO USE. FAILURE TO READ AND FOLLOW ALL PRODUCT WARNINGS AND INSTRUCTIONS COULD RESULT IN SERIOUS INJURY OR DEATH.