



PRODUCT CATALOGUE 2021

PROFESSIONAL
FABRICATION
PRODUCTS



OUR COMPANY

Ozcut Abrasives was born in 2008 by an experienced boilermaker who wasn't happy with the quality and price of the consumables available for the metal fabrication industry. Initially all our products were sourced from global factories and labelled under the Moove Industries brand.

By 2018 it became clear the quality and performance of cutting/grinding wheels available on the OEM market didn't meet our requirements. The decision was made to develop the technology, purchase the machinery and begin manufacturing here in Melbourne.

WHY CHOOSE US?

We know every business is different and with that comes a range of needs. With our diverse product range it doesn't matter if you are looking for the best value possible or the highest performing product, we have you covered.

- >> Quality engineered products developed by an expert team
- >> Dependable, attentive and professional service
- >> Exceptional value for your business
- >> Australian owned
- >> Proudly Australian Made

SCAN THE QR CODE TO WATCH OUR COMPANY VIDEO



OUR PRODUCT RANGE



- >> Made in Australia at our Epping production Facility.
- >> Designed for the most demanding applications
- >> Ultra high stock removal rates
- >> Faster cutting and longer lasting
- >> Made with the best raw materials from around the world
- >> Maximum productivity



- >> Made in Australia at our Epping production Facility.
- >> Designed for the commercial metal fabrication industry
- >> Excellent cost to performance ratio
- >> Large range of products
- >> Long service life



- >> Sourced from global factories made to our specifications
- >> Designed for the commercial metal fabrication industry
- >> Excellent cost to performance ratio
- >> Large range of products

Index

ABRASIVES

CUTTING WHEELS	6
GRINDING WHEELS	8
FLAP DISCS	10
FIBRE SANDING DISCS	11
HOOK AND LOOP DISCS	13
QUICK CHANGE DISCS	14
SURFACE CONDITIONING	16
WIRE PRODUCTS	18
CLEAN & STRIP DISCS	19
BELTS	20
MOUNTED ABRASIVES - CLEAN & STRIP	22
MOUNTED ABRASIVES - GRINDING STONES	23
MOUNTED ABRASIVES - SPIRAL BANDS	24
MOUNTED ABRASIVES - FLAP WHEELS	25

Index

CUTTING TOOLS

HSS ANNULAR CUTTERS - METRIC	26
TCT ANNULAR CUTTERS	28
FEIN QUICK-IN ANNULAR CUTTERS	30
HSS ANNULAR CUTTERS - IMPERIAL	31
ANNULAR CUTTER ACCESSORIES	32
COUNTERSINK & STEP DRILLS	33
CARBIDE BURR SETS	34
CARBIDE BURRS	35
COLD SAW BLADES	38
BANDSAW BLADES	39

SAFETY EQUIPMENT

GLOVES	40
SAFETY GLASSES FACE SHIELDS	42
DUST MASK	43

PUNCHES & DIES

ROUND	44
SQUARE	44
OBLONG	45

CUTTING WHEELS - PLATINUM



Flat Cutting Wheels

- » Made with premium ceramic material
- » Faster cutting compared with standard cutting wheels
- » Considerably longer lasting
- » Compliant with Australian Standard AS1788
- » INOX Iron free formula

SKU	Diameter mm (Inch)	Thickness (mm)	Qty per pack	Qty per carton
203-1251		1	25	100
203-12516	125 (5")	1.6	25	100
203-12525		2.5	25	100
203-1802	180 (7")	2	25	100
203-2302	230 (9")	2	20	80



Depressed Centre Cutting Wheels

- » Optimised for back-grinding between weld passes
- » Made with ultra fast cutting ceramic material
- » Iron free, suitable for use on all ferrous metals
- » Compliant with Australian Standard AS1788
- » INOX Iron free formula

SKU	Diameter mm (Inch)	Thickness (mm)	Qty per pack	Qty per carton
203-12532	125 (5")	3.2	25	100

CUTTING WHEELS - ECO



Flat Cutting Wheels

- » Excellent rigidity for straighter cuts
- » Long lasting design reduces wheel changes
- » Sharp abrasive material for faster cutting
- » Compliant with Australian Standard AS1788
- » INOX Iron free formula

SKU	Diameter mm (Inch)	Thickness (mm)	Qty per pack	Qty per carton
103-1251		1	25	200
103-12516	125 (5")	1.6	25	200
103-12525		2.5	25	100
103-1802	180 (7")	2	25	100
103-2302	230 (9")	2	20	80



Depressed Centre Cutting Wheels

- » Suitable for back-grinding between weld passes
- » Extended disc life with reduced dust
- » Iron free, suitable for use on all ferrous metals
- » Compliant with Australian Standard AS1788
- » INOX Iron free formula

SKU	Diameter mm (Inch)	Thickness (mm)	Qty per pack	Qty per carton
103-12532	125 (5")	3.2	25	100

GRINDING WHEELS



Depressed Centre Grinding Wheels

- » Made with premium Ceramic material
- » Ultra high stock removal rates reduce your process times
- » Long lasting composition reduces disc change frequency
- » Low vibration for operator comfort and safety
- » Dual layer construction helps avoid premature shedding
- » Compliant with Australian Standard AS1788
- » INOX Iron free formula

SKU	Diameter mm (Inch)	Thickness (mm)	Qty per pack	Qty Per carton
203-12568	125 (5")	6.8	10	60
203-18068	180 (7")	6.8	10	40
203-23068	230 (9")	6.8	5	25



Depressed Centre Grinding Wheels

- » Long lasting
- » Fast cutting
- » Economical
- » Compliant with Australian Standard AS1788
- » INOX Iron free formula

SKU	Diameter mm (Inch)	Thickness (mm)	Qty Per carton
103-12568	125 (5")	6.8	50
103-18068	180 (7")	6.8	40
103-23068	230 (9")	6.8	25



GRINDING WHEELS

CLASSIC - FLEXIBLE GRINDING WHEELS

- » Achieves a smoother finish than traditional hard grinding discs
- » Compliant with Australian Standard AS1788

SKU	Diameter mm (Inch)	Thickness (mm)	Grit	Qty per pack	Qty Per carton
MI-031-1253#46	125 (5")	3	46	20	100



GRINDER NUT

- » Replacement nut to suit most 5" grinder such as Bosch, Metabo, Makita.

SKU	Thread
MI-001-M14	M14



FLAP DISCS

ZIRCONIUM

- » Made with the latest German 100% zirconium material
- » Optimal price vs performance ratio
- » T29 Conical shape provides greater surface contact

SKU	Diameter mm (Inch)	Grit	Qty per pack
MI-010-100Z#40	100 (4")	40	10
MI-010-100Z#60		60	
MI-010-100Z#80		80	
MI-010-115Z#40	115 (4.5")	40	10
MI-010-115Z#60		60	
MI-010-115Z#80		80	
MI-010-125Z#40	125 (5")	40	10
MI-010-125Z#60		60	
MI-010-125Z#80		80	
MI-010-125Z#120		120	
MI-010-180Z#40	180 (7")	40	5



GRIT SELECTION

GRIT	36#	40#	60#	80#	120#
	EDGE SHAMFERING/ BEVELING				
	WELD BLENDING				
			DE-BURRING		
			RUST REMOVAL/BLENDING		
				CLEANING & FINISHING	

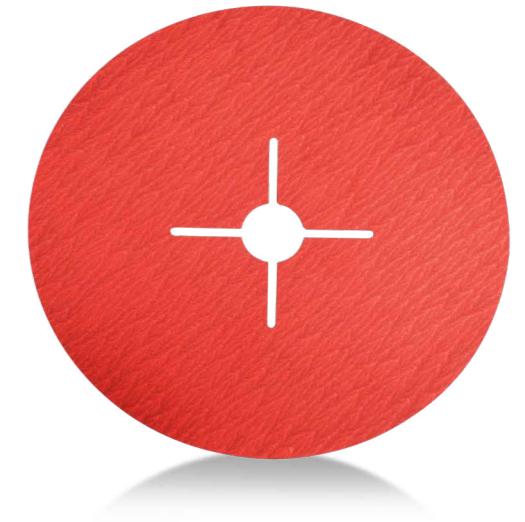
← COARSER (GRINDING)
FINER (FINISHING) →

FIBRE SANDING DISCS

CERAMIC FIBRE SANDING DISCS

- » Made with the latest European ceramic alumina material
- » Fast cutting self sharpening ceramic alumina grains
- » Outlasts aluminum oxide discs by up to 2.5 times
- » Suitable for use on all ferrous metals
- » Match with our Turbo Backing pads for best results

SKU	Diameter mm (Inch)	Grit	Qty Per Pack	Qty per carton
MI-012-100C#36	100 (4")	36	25	250
MI-012-100C#40		40		
MI-012-100C#60		60		
MI-012-100C#80		80		
MI-012-100C#120		120		
MI-012-115C#36	115 (4.5")	36	25	250
MI-012-115C#40		40		
MI-012-115C#60		60		
MI-012-115C#80		80		
MI-012-115C#120		120		
MI-012-125C#36	125 (5")	36	25	250
MI-012-125C#40		40		
MI-012-125C#60		60		
MI-012-125C#80		80		
MI-012-125C#120		120		
MI-012-180C#36	180 (7")	36	25	250
MI-012-180C#40		40		
MI-012-180C#80		80		



TURBO BACKING PADS

- » Turbo ribs provide cooling between the pad and disc, increasing disc life.
- » Use in conjunction with our ceramic fibre discs

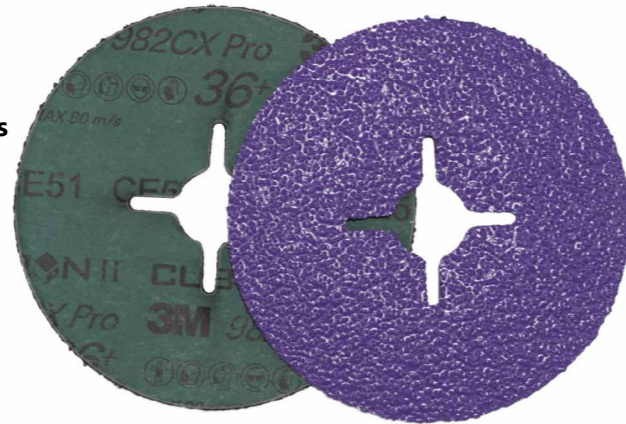
SKU	Diameter mm (Inch)
MI-012-100	100 (4")
MI-012-115	115 (4.5")
MI-012-125	125 (5")
MI-012-180	180 (7")



FIBRE SANDING DISCS

3M™ CUBITRON™ II FIBRE DISC 982CX PRO

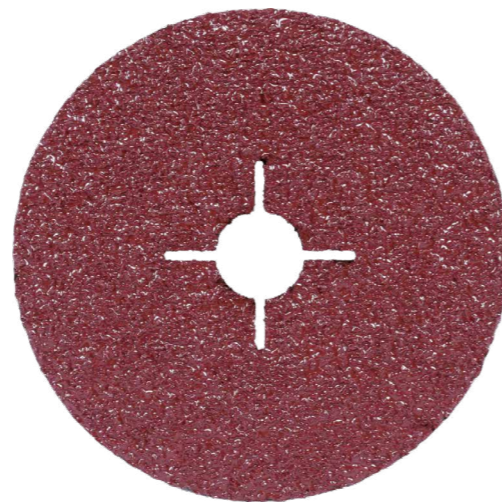
- » Re-engineered 3M Precision-Shaped Grain takes legendary speed and life to a new level
- » Ideal for weld grinding, beveling, flame cut edge cleanup
- » Designed for best performance on mild steel
- » Match with 3M High Pressure backing pads for best results



SKU	Diameter mm (Inch)	Grit	Qty Per Pack	Qty per carton
3M-83322	125 (5")	36+	25	100
3M-83321	180 (7")	36+	25	100

3M™ CUBITRON™ II FIBRE DISC 982C

- » Made with 3M's patented Precision Shaped grains
- » Extra long lasting
- » Ideal for weld grinding, beveling, flame cut edge cleanup
- » Designed for best performance on mild steel
- » Match with 3M High Pressure backing pads for best results



SKU	Diameter mm (Inch)	Grit	Qty Per Pack	Qty per carton
3M-55073		36+		
3M-27624	125 (5")	60+	25	100
3M-27628		80+		
3M-27698	180 (7")	36+	25	100

HIGH PRESSURE BACKING PADS

- » Extra hard plastic backing pad for high stock removal applications
- » Use in conjunction with Cubitron II Fibre Discs



SKU	Diameter mm (Inch)
3M-64861	125 (5")
3M-64862	180 (7")

HOOK AND LOOP SANDING DISCS

OSLONG 150MM HOOK & LOOP

- » 150mm Alox Sanding Discs
- » Durable Paper Backing
- » Available in wide range of grits

SKU	Diameter mm (Inch)	Grit	Qty Per Pack
OS-4015B		40	
OS-6015B		60	
OS-8015B		80	
OS-12015B	150 (6")	120	100
OS-18015B		180	
OS-24015B		240	
OS-32015B		320	
OS-50015B		500	



HOOK & LOOP BACKING PAD

- » For use with 150mm (6") diameter discs
- » Medium density foam and a 45 degree tapered edge for flexibility
- » 5/16 Male thread fits most air sanders

SKU	Diameter mm (Inch)	Thread Size
MI-022-150-516M	150 (6")	5/16-24 EXT



QUICK CHANGE DISCS

CERAMIC ALUMINA

- » Made with the latest German ceramic alumina material
- » TopSize coating for extra cool cutting
- » Fast cutting self sharpening ceramic alumina grains
- » Outlasts aluminum oxide discs by up to 2.5 times
- » Suitable for use on all ferrous metals
- » Available in a large range of sizes and grits

SKU	Diameter mm (Inch)	Grit	Qty per pack
MI-015-50#36	50 (2")	36	25
MI-015-50#40		40	
MI-015-50#60		60	
MI-015-50#80		80	
MI-015-50#120		120	
MI-015-75#36	75 (3")	36	25
MI-015-75#40		40	
MI-015-75#60		60	
MI-015-75#80		80	
MI-015-75#120		120	



BACKING PADS M14

- » Soft rubber backing pad to suit our quick change discs
- » M14 Thread fits most 4" and 5" grinders

SKU	Mounting	Diameter mm (Inch)	Qty per pack
MI-014-50-M-M14	M14 Thread	50 (2")	1
MI-014-75-M-M14	M14 Thread	75 (3")	1



BACKING PADS - SPINDLE

- » Soft rubber backing pad to suit our quick change discs
- » 6mm shank spindle

SKU	Mounting	Diameter mm (Inch)	Qty per pack
MI-014-50-M	6mm	50 (2")	1
MI-014-75-M	6mm	75 (3")	1



QUICK CHANGE DISCS

SURFACE CONDITIONING

- » Ideal for providing decorative polished finishes
- » Removes grind marks, rust and coatings
- » TR Quick Change system minimizes disc change time

SKU	Diameter mm (Inch)	Grit	Qty Per Pack
MI-016-50#CRS	50 (2")	Coarse - Brown	25
MI-016-50#MED		Medium - Maroon	
MI-016-50#FIN		Fine - Blue	
MI-016-75#CRS	75 (3")	Coarse - Brown	25
MI-016-75#MED		Medium - Maroon	
MI-016-75#FIN		Fine - Blue	



CLEAN AND STRIP

- » Open web silicon carbide abrasive removes surface coatings, rust and other adhesives with minimal stock removal
- » Quick change system reduces disc change time

SKU	Diameter mm (Inch)	Qty per pack
MI-016-50#STRP	50 (2")	25
MI-016-75#STRP	75 (3")	



SURFACE CONDITIONING

SURFACE CONDITIONING DISCS

- » Designed for artistic metal surface preparation
- » Ideal for stainless steel polishing
- » Fast change hook and loop system
- » Centre pin ensures correct alignment and less vibration



SKU	Diameter mm (Inch)	Grit	Qty Per Pack
MI-021-125#CRS		Coarse - Brown	
MI-021-125#MED	125 (5")	Medium - Maroon	1
MI-021-125#FIN		Fine - Blue	

SURFACE CONDITIONING BACKING PADS

- » Match with surface conditioning discs
- » Centre pin to reduce risk of disc fly off
- » Hook & loop attachment system allows fast disc changes



SKU	Mounting	Diameter mm (Inch)	Qty per pack
3M-61681	M14 Thread	125 (5")	1

SURFACE CONDITIONING

SCOTCH-BRITE™ MULTI-FINISHING WHEEL

- » Creates attractive final finishes on ferrous and non-ferrous metals
- » Removes surface contamination and dirt without re-depositing contaminants onto the work piece
- » Silicone carbide mineral creates a unique bright surface



SKU	Diameter mm (Inch)	Width mm (Inch)	Density	Grade	Qty per pack
3M-61500051646				CRS	
3M-61500051653	150 (6")	50 (2")	2S	MED	2
3M-61500051661				FIN	
3M-61500132867	150 (6")	50 (2")	4S	CRS	2
3M-61500162914				MED	

HAND PADS

- » Can be used wet or dry, will not rust or clog
- » Consistent surface finishing
- » Long life performance on aluminium, stainless steel, plastics, wood and fibreglass



SKU	Length mm (Inch)	Width mm (Inch)	Colour	Qty per pack
MI-041-9X6-GRN	230 (9")	150 (6")	Green	10
MI-041-9X6-MED			Maroon	10

WIRE PRODUCTS

TWIST KNOT FLAT WIRE WHEELS

- >> Suitable for paint and rust removal
- >> Surface preparation
- >> Made in Germany by Lessmann

SKU	Diameter mm (Inch)	Hub	Wire Size	Material
LES-473-217	125 (5")	M14	0.5mm	Carbon Steel
LES.473.817				301 Stainless Steel



TWIST KNOT BEVEL WIRE WHEELS

- >> Twist knot wire designed for hard aggressive brushing and contaminant removal
- >> Bevel construction for brushing hard to reach areas
- >> Ideal for cleaning welds, removal of paint, rust and corrosion from steel

SKU	Diameter mm (Inch)	Thread	Wire Size	Material	Max Rpm
LES-473.257	125 (5")	M14	0.5mm	Carbon Steel	12,500



KNOTTED CUP WHEELS

- >> Aggressive cleaning action for large surface areas
- >> Ideal for removing weld spatter and slag

SKU	Diameter mm (Inch)	Thread	Wire Size	Material	Max Rpm
LES-483.217	75 (3")	M14	0.5mm	Carbon steel	12,500
MI-018-75-C-KSS-316				316 Stainless Steel	



*Check the max rpm of your grinder before ordering

WIRE PRODUCTS

PLASTIC HANDLE WIRE BRUSH

- >> Ergonomical plastic handle
- >> Durable 0.3mm wire bristles

SKU	Material
MI-018-B-SBSS	Stainless Steel



CLEAN & STRIP DISCS

- >> Open web silicon carbide abrasive removes surface coatings, rust and other adhesives with minimal stock removal
- >> Perfect for paint preparation
- >> A safer alternative to wire products with no wire elements breaking off at speed.

SKU	Diameter mm (Inch)	Grit	Qty per pack
MI-013-125C40	125 (5")	40	5
MI-013-180C40	180 (7")	40	5



BELTS

3M™ CUBITRON™ CERAMIC

- » Combines a patented, precision shaped Ceramic grain and a manufacturing process that makes each mineral point toward the work piece
- » Ideal for stainless steel, mild steel, aluminium and titanium
- » Suitable for grinding, blending, finishing and deburring applications on virtually all metal types
- » Available 784F



Width (mm)	Length (mm)	Grit				
10	330	36+	40+	60+	80+	120+
	457					
13	533	36+	40+	60+	80+	120+
	610					
19	457	36+	40+	60+	80+	120+
20	520	36+	40+	60+	80+	120+
25	533	36+	40+	60+	80+	120+
30	533	36+	40+	60+	80+	120+
	915					
	1220					
	1520					
50	2440	36+	40+	60+	80+	120+
	2745					
	2745					
	4270					

Width (mm)	Length (mm)	Grit				
75	2000	36+	40+	60+	80+	120+
90	400	36+	40+	60+	80+	120+
	915					
	1220					
100	1520					
	2000	36+	40+	60+	80+	120+
	2440					
	2745					
150	4270					
	1220					
150	1520	36+	40+	60+	80+	120+
	2000					

CUSTOM SIZES MADE TO ORDER

BELTS

3M™ SCOTCH BRITE

- » Ideal for polishing and fine surface finishing
- » Available in Coarse, Medium and Fine grits
- » Custom sizes made to order



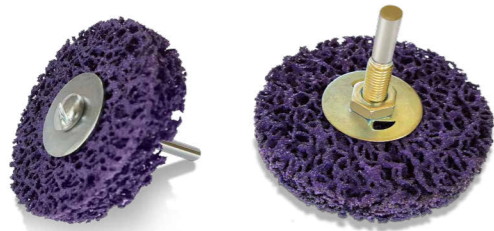
3M™ TRIZACT

- » Constant grit size for repeatable surface texture
- » Available in grits A6, A16, A30, A45, A65, A100, A160
- » Custom sizes made to order



MOUNTED ABRASIVES

MOUNTED CLEAN & STRIP WHEELS



- » Open web silicon carbide abrasive removes surface coatings, rust and other adhesives with minimal stock removal
- » Perfect for paint preparation
- » A safer alternative to wire products with no wire elements breaking off at speed.

SKU	Wheel Diameter (mm)	Thickness (mm)	Shank Diameter	Qty per pack
MI-019-75-13#STRP	75	13	6	5

DIE GRINDER COLLET - 6MM

- » Replacement collets to suit most die grinders. Change your machine from 1/4" to 6mm Metric

SKU	Shank Diameter
MI-003-C-6	6



MOUNTED ABRASIVES

MOUNTED POINTS - RESIN BONDED (GRINDING STONES)

We offer a range of resin bonded and vitrified mounted points for all applications. Popular sizes are detailed below. Contact us with your specific requirements for more information.

SKU	Wheel Diameter (mm)	Length (mm)	Shank Diameter	Material	Qty per pack
MI-017-A11-B	50	21	6	Resin bonded	5



SKU	Wheel Diameter (mm)	Length (mm)	Shank Diameter	Material	Qty per pack
MI-017-W220-B	25	25			
MI-017-W236-B	38	13	6	Resin bonded	5
MI-017-W237-B	38	25			
MI-017-W242-B	50	25			



MOUNTED POINTS - VITRIFIED PINK (GRINDING STONES)

SKU	Wheel Diameter (mm)	Length (mm)	Shank Diameter	Material	Qty per pack
MI-017-A24-P	6	20	6	Vitrified	5



SKU	Wheel Diameter (mm)	Length (mm)	Shank Diameter	Material	Qty per pack
MI-017-W220-P	25	25	6	Vitrified	5
MI-017-W242-P	50	25	6	Vitrified	5



MOUNTED ABRASIVES

SPIRAL BANDS - CERAMIC ALUMINA

- » Suitable for most applications, from grinding to polishing
- » Red ceramic alumina abrasive lasts longer and cuts faster than zirconium (blue) or aluminium oxide (brown)
- » Secure retention on matching rubber mandrel

SKU	Diameter mm	Width mm	Grit	Qty per pack
MI-024-25-25C#36			36	
MI-024-25-25C#40			40	
MI-024-25-25C#60	25	25	60	25
MI-024-25-25C#80			80	
MI-024-25-25C#120			120	
MI-024-38-25C#36			36	
MI-024-38-25C#40			40	
MI-024-38-25C#60	38	25	60	25
MI-024-38-25C#80			80	
MI-024-38-25C#120			120	
MI-024-51-25C#36			36	
MI-024-51-25C#40			40	
MI-024-51-25C#60	51	25	60	25
MI-024-51-25C#80			80	
MI-024-51-25C#120			120	



SPIRAL BAND MANDRELS

- » 6mm shank rubber mandrels to suit our range of ceramic spiral bands

SKU	Diameter mm	Width mm	Shank mm	Qty per pack
MI-024-M-25-25	25			
MI-024-M-38-25	38	25	6	1
MI-024-M-51-25	51			



MOUNTED ABRASIVES

MOUNTED FLAP WHEELS

- » Ideally suited to internal pipe preparations
- » Premium German abrasive
- » 6mm shank suits most die grinders
- » Available in a range of sizes and grits
- » Custom sizes available on request

SKU	Diameter (mm)	Width (mm)	Grit	Qty per pack per pack
MI-011-15-10#80	15	10	80	5
MI-011-25-25#60		25	60	
MI-011-25-25#80	25	25	80	5
MI-011-25-25#120		25	120	
MI-011-40-25#60		25	60	
MI-011-40-25#80		25	80	
MI-011-40-25#120	40	25	120	5
MI-011-40-40#60		40	60	
MI-011-40-40#80		40	80	
MI-011-50-10#60		10	60	
MI-011-50-20#60	50	20	60	5
MI-011-50-50#60		50	60	
MI-011-50-50#80		50	80	
MI-011-60-40#60	60	40	60	5
MI-011-60-40#80		40	80	
MI-011-80-25#60		25	60	
MI-011-80-25#80	80	25	80	5
MI-011-80-50#60		50	60	
MI-011-80-50#80		50	80	



ANNULAR CUTTERS - HIGH SPEED STEEL

- » Universal shank suits most mag based drills including Alfa, BDS, Euroboor, Bux, Rotabroach, Ruko, Magnetor, Nitto and all machines with an Alfa Quick-Change shank system.
- » High Speed Steel suitable for most general purpose applications
- » Custom sizes available on request

SHORT SERIES - 25mm LENGTH

SKU	Length (mm)	Diameter (mm)
MI-004-012	25	12
MI-004-013	25	13
MI-004-014	25	14
MI-004-015	25	15
MI-004-016	25	16
MI-004-017	25	17
MI-004-018	25	18
MI-004-019	25	19
MI-004-020	25	20
MI-004-021	25	21
MI-004-022	25	22
MI-004-023	25	23
MI-004-024	25	24
MI-004-025	25	25
MI-004-026	25	26
MI-004-027	25	27
MI-004-028	25	28
MI-004-029	25	29
MI-004-030	25	30
MI-004-031	25	31
MI-004-032	25	32



PILOT PIN - SUIT 25mm HSS

SKU	Pin Diameter	Pin Length	Suits Cutters
MI-004-001	6.34mm	77mm	25mm Short Series HSS



ANNULAR CUTTERS - HIGH SPEED STEEL

LONG SERIES - 50mm LENGTH

SKU	Length (mm)	Diameter (mm)
MI-004-512	50	12
MI-004-513	50	13
MI-004-514	50	14
MI-004-515	50	15
MI-004-516	50	16
MI-004-517	50	17
MI-004-518	50	18
MI-004-519	50	19
MI-004-520	50	20
MI-004-521	50	21
MI-004-522	50	22
MI-004-523	50	23
MI-004-524	50	24
MI-004-525	50	25
MI-004-526	50	26
MI-004-527	50	27
MI-004-528	50	28
MI-004-529	50	29
MI-004-530	50	30
MI-004-531	50	31
MI-004-532	50	32
MI-004-533	50	33
MI-004-534	50	34
MI-004-535	50	35
MI-004-536	50	36

SKU	Length (mm)	Diameter (mm)
MI-004-537	50	37
MI-004-538	50	38
MI-004-539	50	39
MI-004-540	50	40
MI-004-541	50	41
MI-004-542	50	42
MI-004-543	50	43
MI-004-544	50	44
MI-004-545	50	45
MI-004-546	50	46
MI-004-547	50	47
MI-004-548	50	48
MI-004-549	50	49
MI-004-550	50	50
MI-004-551	50	51
MI-004-552	50	52
MI-004-553	50	53
MI-004-554	50	54
MI-004-555	50	55
MI-004-556	50	56
MI-004-557	50	57
MI-004-558	50	58
MI-004-559	50	59
MI-004-560	50	60



PILOT PIN SUIT 50mm HSS

SKU	Pin Diameter mm	Pin Length mm	Suits Cutters
MI-004-501	6.34	103	50mm Long Series HSS



ANNULAR CUTTERS - TUNGSTEN CARBIDE

- » Tungsten Carbide teeth suitable for more demanding applications such as stainless steel, duplex and other alloys.
- » High tensile steel body more resistant to shattering than hardened high speed steel
- » Universal shank suits most mag based drills including Alfa, BDS, Euroboor, Bux, Rotabroach, Ruko, Magnetor, Nitto and all machines with an Alfa Quick-Change shank system.
- » Custom sizes available on request

LONG SERIES TCT - 50mm LENGTH

SKU	Length (mm)	Diameter (mm)
MI-004-512-TCT	50	12
MI-004-513-TCT	50	13
MI-004-514-TCT	50	14
MI-004-515-TCT	50	15
MI-004-516-TCT	50	16
MI-004-517-TCT	50	17
MI-004-518-TCT	50	18
MI-004-519-TCT	50	19
MI-004-520-TCT	50	20
MI-004-521-TCT	50	21
MI-004-522-TCT	50	22
MI-004-523-TCT	50	23
MI-004-524-TCT	50	24
MI-004-525-TCT	50	25
MI-004-526-TCT	50	26
MI-004-527-TCT	50	27
MI-004-528-TCT	50	28
MI-004-529-TCT	50	29
MI-004-530-TCT	50	30
MI-004-531-TCT	50	31
MI-004-532-TCT	50	32
MI-004-533-TCT	50	33
MI-004-534-TCT	50	34
MI-004-535-TCT	50	35
MI-004-536-TCT	50	36

SKU	Length (mm)	Diameter (mm)
MI-004-537-TCT	50	37
MI-004-538-TCT	50	38
MI-004-539-TCT	50	39
MI-004-540-TCT	50	40
MI-004-541-TCT	50	41
MI-004-542-TCT	50	42
MI-004-543-TCT	50	43
MI-004-544-TCT	50	44
MI-004-545-TCT	50	45
MI-004-546-TCT	50	46
MI-004-547-TCT	50	47
MI-004-548-TCT	50	48
MI-004-549-TCT	50	49
MI-004-550-TCT	50	50
MI-004-551-TCT	50	51
MI-004-552-TCT	50	52
MI-004-553-TCT	50	53
MI-004-554-TCT	50	54
MI-004-555-TCT	50	55
MI-004-556-TCT	50	56
MI-004-557-TCT	50	57
MI-004-558-TCT	50	58
MI-004-559-TCT	50	59
MI-004-560-TCT	50	60



PILOT PIN - SUIT 50mm TCT

SKU	Suits Diameters (mm)	Pin Diameter	Suits Length (mm)
MI-004-501	12 - 17	6.34mm	50
MI-004-501-HD	18-60	7.98	50



ANNULAR CUTTERS - TUNGSTEN CARBIDE

EXTRA LONG SERIES TCT - 75mm LENGTH

SKU	Length (mm)	Diameter (mm)
MI-004-712-TCT	75	12
MI-004-713-TCT	75	13
MI-004-714-TCT	75	14
MI-004-715-TCT	75	15
MI-004-716-TCT	75	16
MI-004-717-TCT	75	17
MI-004-718-TCT	75	18
MI-004-719-TCT	75	19
MI-004-720-TCT	75	20
MI-004-721-TCT	75	21
MI-004-722-TCT	75	22
MI-004-723-TCT	75	23
MI-004-724-TCT	75	24
MI-004-725-TCT	75	25
MI-004-726-TCT	75	26
MI-004-727-TCT	75	27
MI-004-728-TCT	75	28
MI-004-729-TCT	75	29
MI-004-730-TCT	75	30
MI-004-731-TCT	75	31
MI-004-732-TCT	75	32
MI-004-733-TCT	75	33
MI-004-734-TCT	75	34
MI-004-735-TCT	75	35
MI-004-736-TCT	75	36

SKU	Length (mm)	Diameter (mm)
MI-004-737-TCT	75	37
MI-004-738-TCT	75	38
MI-004-739-TCT	75	39
MI-004-740-TCT	75	40
MI-004-741-TCT	75	41
MI-004-742-TCT	75	42
MI-004-743-TCT	75	43
MI-004-744-TCT	75	44
MI-004-745-TCT	75	45
MI-004-746-TCT	75	46
MI-004-747-TCT	75	47
MI-004-748-TCT	75	48
MI-004-749-TCT	75	49
MI-004-750-TCT	75	50
MI-004-751-TCT	75	51
MI-004-752-TCT	75	52
MI-004-753-TCT	75	53
MI-004-754-TCT	75	54
MI-004-755-TCT	75	55
MI-004-756-TCT	75	56
MI-004-757-TCT	75	57
MI-004-758-TCT	75	58
MI-004-759-TCT	75	59
MI-004-760-TCT	75	60



PILOT PIN - SUIT 75mm TCT

SKU	Pin Diameter	Pin Length	Suits Cutters
MI-004-701-HD	7.98mm	130mm	75mm TCT



ANNULAR CUTTERS - FEIN® QUICK-IN

FEIN QUICK-IN® - 50mm LENGTH

- » Shank suitable for Fein Quick-In machines
- » High Speed Steel suitable for most general purpose applications

SKU	Length (mm)	Diameter (mm)
MI-007-512	50	12
MI-007-513	50	13
MI-007-514	50	14
MI-007-515	50	15
MI-007-516	50	16
MI-007-517	50	17
MI-007-518	50	18
MI-007-519	50	19
MI-007-520	50	20
MI-007-521	50	21
MI-007-522	50	22
MI-007-523	50	23
MI-007-524	50	24
MI-007-525	50	25
MI-007-526	50	26
MI-007-527	50	27
MI-007-528	50	28
MI-007-529	50	29
MI-007-530	50	30
MI-007-531	50	31
MI-007-532	50	32
MI-007-533	50	33
MI-007-534	50	34
MI-007-535	50	35
MI-007-536	50	36

SKU	Length (mm)	Diameter (mm)
MI-007-537	50	37
MI-007-538	50	38
MI-007-539	50	39
MI-007-540	50	40
MI-007-541	50	41
MI-007-542	50	42
MI-007-543	50	43
MI-007-544	50	44
MI-007-545	50	45
MI-007-546	50	46
MI-007-547	50	47
MI-007-548	50	48
MI-007-549	50	49
MI-007-550	50	50
MI-007-551	50	51
MI-007-552	50	52
MI-007-553	50	53
MI-007-554	50	54
MI-007-555	50	55
MI-007-556	50	56
MI-007-557	50	57
MI-007-558	50	58
MI-007-559	50	59
MI-007-560	50	60



PILOT PIN - SUIT 50mm FEIN®

SKU	Pin Diameter	Pin Length	Suits Cutters
MI-004-501	6.34mm	103mm	50mm Fein Quick-In



ANNULAR CUTTERS - IMPERIAL

IMPERIAL

- » We stock a limited range of imperial sized cutters, other sizes available by request

SKU	Diameter (Inch)	Length (Inch)
MI-004-101	1"	1"
MI-004-102	1"	2"
MI-004-1-122	1-1/2"	2"
MI-004-1-181	1-1/8"	1"
MI-004-1-182	1-1/8"	2"
MI-004-121	1/2"	1"
MI-004-122	1/2"	2"
MI-004-202	2"	2"



PILOT PIN - SUIT IMPERIAL

SKU	Pin Diameter (mm)	Pin Length (Inch)	Suits Cutters
MI-004-001	6.34	3"	1" Imperial HSS
MI-004-501		4"	2" Imperial HSS



ANNULAR CUTTERS - ACCESSORIES

PILOT PINS

SKU	Pin Diameter mm	Pin Length mm
MI-004-001	6.34	77
MI-004-501		103
MI-004-001-HD	7.98	77
MI-004-501-HD		108
MI-004-701-HD		130
MI-004-1001-HD		160



MORSE TAPER ADAPTER

- » Adapt any drill press with morse taper to enable the use of annular cutters
- » Eliminate the need for time consuming stepped drilling and increase the capacity of your machine
- » Through centre cooling with automatic shut off



SKU	Description
MI-004-503	Morse Taper 2 to 3/4" Universal Annular Cutter Shank

*Cutter not included with adapter.

MORSE TAPER SLEEVE

- » Use in conjunction with our morse taper adapter to increase from MT2 to MT3 size for larger drills.



SKU	Description
MI-004-503	Morse Taper 3 to Morse Taper 2

COUNTERSINKS AND STEP DRILLS

COUNTERSINKS - 90 DEGREE

- » 3 flute design ensures smooth cutting and suitability for all types of material
- » Fully ground from high speed steel
- » Available in a range of sizes, custom sizes available by request

SKU	Diameter (mm)	Angle	Shank Size (mm)
MI-005-1690	3 - 16.5	90	10
MI-005-2590	3 - 25	90	10
MI-005-3190	3 - 31	90	12
MI-005-4090	3 - 40	90	12



COUNTERSINKS - 90 DEGREE - QUICK CHANGE SHANK

SKU	Diameter (mm)	Angle	Shank
MI-004-3090	3-30	90	Mag Drill Quick Change
MI-004-4090	3 - 40	90	Mag Drill Quick Change



STEP DRILLS

- » Twisted flute design provides smoother cutting than traditional straight flute drills
- » Fully ground from high speed steel
- » Ideally suited to purlins and other sheet metal applications

SKU	Diameter (mm)	Shank Size
MI-005-420	4-20	10
MI-005-630	6-30	12.7



CARBIDE BURR SETS

8 PIECE DOUBLE CUT SET

- » Double cut tooth design suitable for materials such as mild steel, stainless steel & titanium.
- » 6mm Shank suits most die grinders
- The 8 piece set consists of:
 - » Tree with taper – 12 x 25 x 69
 - » Tree with taper – 10 x 20 x 64
 - » Ball – 12 x 10.8 x 55
 - » Ball – 10 x 9 x 53
 - » Cylinder radius end – 6 x 16 x 60
 - » Cylinder radius end – 10 x 20 x 64
 - » Cylinder – 10 x 20 x 65
 - » Cylinder – 12 x 25 x 69

SKU
MI-003-001



3 PIECE NON-FERROUS CUT SET

- » Aggressive tooth design is suited to non-ferrous materials such as aluminium, plastic and wood.
- » Deep tooth channels quickly dispose of chips without clogging
- The 3 piece set consists of:
 - » Cylinder – 10mm x 20mm x 64mm
 - » Tree with radius end- 10mm x 20mm x 64mm
 - » Tree with pointed end – 10mm x 20mm x 64mm

SKU
MI-003-008



INDIVIDUAL CARBIDE BURRS - 6MM SHANK

TREE RADIUS END

SKU	Finish	Head Diameter (mm)	Head Length (mm)	Total Length (mm)
MI-003-013	Double cut	10	20	64
MI-003-014	Double cut	12	25	69



CYLINDER RADIUS END

SKU	Finish	Head Diameter (mm)	Head Length (mm)	Total Length (mm)
MI-003-024	Double cut	6	16	50
MI-003-011	Double cut	8	20	63
MI-003-004	Double cut	10	20	65
MI-003-005	Double cut	12	25	70



FLAME

SKU	Finish	Head Diameter (mm)	Head Length (mm)	Total Length (mm)
MI-003-006	Double cut	10	20	65
MI-003-007	Double cut	12	32	77



CYLINDER END CUT

SKU	Finish	Head Diameter (mm)	Head Length (mm)	Total Length (mm)
MI-003-002	Double cut	10	20	65
MI-003-003	Double cut	12	25	70
MI-003-010	Single Cut	10	20	64



INDIVIDUAL CARBIDE BURRS - 6MM SHANK

TAPER

SKU	Finish	Head Diameter (mm)	Head Length (mm)	Total Length (mm)
MI-003-015	Double cut	10	25	69
MI-003-016	Single Cut	10	25	69



CONE

SKU	Finish	Head Diameter (mm)	Head Length (mm)	Total Length (mm)
MI-003-017	Single Cut	10	20	64



BALL

SKU	Finish	Head Diameter (mm)	Head Length (mm)	Total Length (mm)
MI-003-012	Double cut	10	9	53



ARCHED POINTED NOSE

SKU	Finish	Head Diameter (mm)	Head Length (mm)	Total Length (mm)
MI-003-025	Double Cut	10	20	65



CARBIDE BURRS - 6MM SHANK EXTRA LONG

EXTRA-LONG

- >> Extra long shank for applications where access is limited
- >> Double cut teeth suitable for most applications

SKU	Finish	Head Shape	Head Diameter (mm)	Total Length (mm)
MI-003-018	Double cut	Cylinder End Cut	10	150
MI-003-019	Double cut	Cylinder Radius Cut	10	150
MI-003-020	Double cut	Tree Radius End	10	150

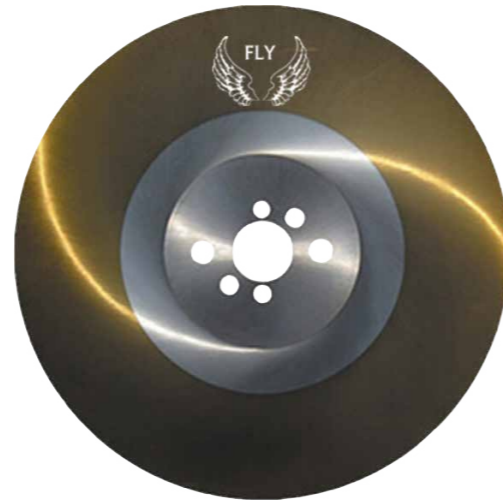


COLDSAW BLADES

HSS DM05

- » Suitable for use on mild steel
- » Teeth cut to suit customers application (160, 180, 220, 260, 280)
- » Made from high quality high speed steel
- » Large range of sizes available

Diameter (mm)	Thickness of saw blade (mm)	Bore (mm)
250	2	32
	2	32
275	2.5	32
	2.5	40
	2.5	32
	2.5	38
300	2.5	40
	3	40
	2.5	32
	2.5	40
315	3	32
	3	40
	2.5	32
	2.5	40
350	3	32
	3	40
	2.5	32
370	3	32
	3	40
400	3	40



HV 3800

- » Suitable for use on stainless steel and hard alloys
- » HV3800 coating increases time between sharpening

Diameter (mm)	Thickness of saw blade (mm)	Bore (mm)
250	2	32
	2.5	32
275	2.5	40
	2.5	32
	2.5	40
300	2.5	32
	2.5	40
	2.5	32
	2.5	40
315	2.5	32
	2.5	40
	2.5	32
	2.5	40
350	3	32
	3	40
	2.5	32
370	3	32
	3	40
400	3	40

* Teeth cut as per client's requirements

BANDSAW BLADES

M42 SPRINT BANDSAWS

- » Non ferrous structurals
- » Single and bundle cuts
- » Tubes and structurals with light or medium walls
- » Sheet metal on vertical band saw machines



MODEL	Width (mm)	Thickness of saw blade	Tooth Pitch					
M42-SPRINT	6	0.9	-	-	-	-	-	10/14
M42-SPRINT	10	0.9	-	-	-	-	-	10/14
M42-SPRINT	13	0.65	-	-	5/8	6/10	8/12	10/14
M42-SPRINT	13	0.9	-	-	-	6/10	8/12	10/14
M42-SPRINT	20	0.9	-	4/6	5/8	6/10	8/12	10/14
M42-SPRINT	27	0.9	3/4	4/6	5/8	6/10	8/12	10/14
M42-SPRINT	34	1.1	3/4	4/6	5/8	6/10	8/12	-
M42-SPRINT	41	1.3	3/4	4/6	5/8	6/10	-	-
M42-SPRINT	54	1.6	-	4/6*	5/8*	-	-	-

M51 TAIFUN MAXIMA BANDSAWS

- » Steels up to 1700 N/mm²
- » Stainless steel, exotic and difficult to cut alloys
- » Variable tooth geometry for smoother faster cutting

MODEL	Width (mm)	Thickness of saw blade	Tooth Pitch					
M51-TAIFUN-MAXIMA	27	0.9	-	-	-	-	2/3	3/4
M51-TAIFUN-MAXIMA	34	1.1	-	-	-	-	2/3	3/4
M51-TAIFUN-MAXIMA	41	1.3	-	-	-	1.4/2	2/3	3/4
M51-TAIFUN-MAXIMA	54	1.6	-	-	1/1.5	1.4/2	2/3	-
M51-TAIFUN-MAXIMA	67	1.6	0.75/1.25	1/1.3	-	1.4/2	2/3	-
M51-TAIFUN-MAXIMA	80	1.6	0.75/1.25	1/1.3	-	-	-	-

* Special item

GLOVES

FULL GRAIN GOATSKIN RIGGERS

- » Premium full grain goat leather
- » EN 388 Certification
- » Breathes better for comfort in summer months
- » Wing thumb provides superior comfort



SKU	Description	Pairs per pack	Size
MI-002-004-S	Full Grain Rigger Small	12	S
MI-002-004-M	Full Grain Rigger Medium	12	M
MI-002-004-L	Full Grain Rigger Large	12	L
MI-002-004-XL	Full Grain Rigger Extra Large	12	XL
MI-002-004-XXL	Full Grain Rigger Double Extra Large	12	XXL



COMMANDER FULL GRAIN COWHIDE RIGGERS

- » Premium full grain cowhide leather
- » Double Nylon Stitched
- » Wing Thumb for Stitch free palm

SKU	Description	Pairs per pack	Size
GRC143-08	Full Grain Rigger Small	12	S
GRC143-09	Full Grain Rigger Medium	12	M
GRC143-10	Full Grain Rigger Large	12	L
GRC143-11	Full Grain Rigger Extra Large	12	XL



G-FORCE HI VIS CUT LEVEL C GLOVE

- » Hi-Vis Yellow 13 Gauge Kenima® Super Cut Resistant Yarn
- » CE/EN388 2016 Cut Resistant Level 5
- » Contact heat resistance up to 100°C according to EN407
- » Black Nitrile coated palm offers superb flexibility, durability and grip in wet conditions
- » Cool Star® Yarn offers excellent breathability and sweat absorption

SKU	Pairs per pack	Size
GTH238-07	12	S
GTH238-08	12	M
GTH238-09	12	L
GTH238-10	12	XL



WELDING GLOVES

TIG WELDING GLOVES

- » Thick cotton insulation for thermal protection
- » Long cuff prevents burns on the upper arm when welding
- » Patched palm and fingers for extra durability
- » Kevlar stitching provides resistance to breakage
- » Made from top quality split cow leather

SKU	Description	Pairs per pack	Size
MI-002-006-L	TIG Welding Gloves	6	One size



BLUE AND GOLD WELDING GLOVES

- » Thick cotton insulation for thermal protection
- » Long cuff prevents burns on the upper arm when welding
- » Patched palm and fingers for extra durability
- » Kevlar stitching provides resistance to breakage
- » Made from top quality split cow leather



SKU	Description	Pairs per pack	Size
MI-002-002	Blue and Gold Welding	6	One size



GLOVE CLIP

SKU	Colour	Size
MI-002-010	Blue	One size



EYE PROTECTION

'TEXAS' SAFETY GLASSES WITH ANTIFOG

- » Excellent value for money
- » Lightweight design for extra comfort
- » Certified and compliant with AS1337.1

SKU	Lens Colour	Pairs per pack
EBR330	Clear	12
EBR331	Smoke	12
EBR332	Cool-amber	12
EBR333	Blue Mirror	12



MAXISAFE FACESHIELD & BROW GUARD

- » Complies with AS/NZS 1337
- » Medium Impact Resistant
- » Ratchet adjustable head gear
- » Replaceable polycarbonate visor and chinguard

SKU	Description
EBF457a	Faceshield brow guard with Clear Lens
EBC459	Replacement Clear Lens
EBG442	Replacement Smoke Lens
EBG443	Replacement Shade 3 Lens
EBG444	Replacement Shade 5 Lens
EBG458	Replacement Brow Guard with Ratchet Headgear



maxisafe®

RESPIRATORY PROTECTION

MAXIGUARD SILICONE HALF MASK

- » Comfortable silicone mask
- » Easy to clean and maintain
- » Certified to AS/NZS 1716:2012
- » Range of Filters Available

maxisafe®

SKU	Size	Notes
R7500-M	Medium	Mask Only - No Filters
R7500-L	Large	Mask Only - No Filters
R7500G-M	Medium	Includes 2x P3 Filters
R7500G-L	Large	Includes 2x P3 Filters



MAXIGUARD FILTERS

SKU	Notes
R2000-P3C	MaxiGuard P3 Carbon Particulate Filter
R703-ABEK1	MaxiGuard ABEK1 Chemical Cartridge
R701-A1	MaxiGuard A1 Organic Vapour Cartridge
R7N11-P2	MaxiGuard P2 Particulate Prefilter
R510	MaxiGuard Prefilter Holder
R703-ABEK1P2	MaxiGuard ABEK1P2 Chemical Cartridge with P2 Prefilter Combination
R701-A1P2	MaxiGuard A1P2 Organic Vapour Cartridge Combo

PUNCHES & DIES

We can supply punches and dies for almost any machine on the market in a variety of shapes including round, oblong, and square. Call us with your specific requirements.

SUITABLE FOR THE FOLLOWING MANUFACTURERS

- » Kingsland
- » Geka
- » Peddinghaus
- » Buffalo Ironworkers
- » Hill Acme
- » Kling
- » Ironcrafter
- » Controlled Automation
- » Ficep
- » Franklin
- » Mubea
- » Nitto Kohki
- » Prinha
- » and many more

ROUND

- » Diameters from 5 - 50mm
- » Custom sizes available



SQUARE

- » Sizes from 5 - 50mm
- » Custom sizes available



PUNCHES & DIES

OBLONG

- » Sizes from 6 x 12mm up to 26 x 38mm
- » Custom sizes available





OZcut
Abrasives

 162 JERSEY DRIVE, EPPING, VIC, 3076

 WWW.OZCUTABRASIVES.COM.AU

 SALES@OZCUTABRASIVES.COM.AU

 VIC (03) 8679 4512 | WA (08) 6143 8981