



CYC X6 CONTROLLER

Upgrade Kit Guide

✉ support@cycmotor.com

☎ +852 3690 8938

To upgrade from the ASI BAC855 to the CYC X6 Controller, the follow components are required for conversion:

- X6 Controller
- Wire Cover Plate
- Bluetooth Speed Sensor & Magnet
- Speed Sensor Magnet
- SW102/ DS103 Display (optional)

Please note that the sptes and images used in the below guide are for reference only. We strongly encourage you to email technical_support@cycmotor.com if you are uncertain about any of the steps described below.





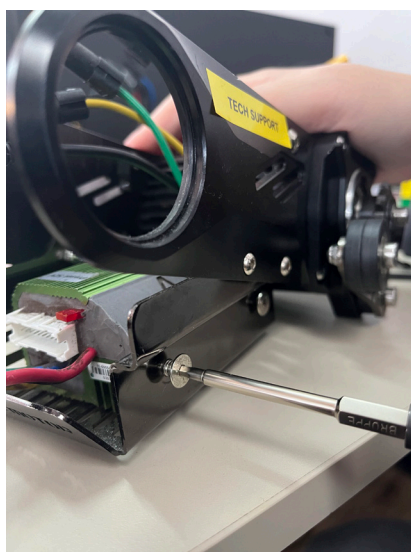
STEP 1:

Unplug the phase wires (yellow, blue, red), torque sensor wire, motor wire & XT90 connector from the BAC855 controller mount.



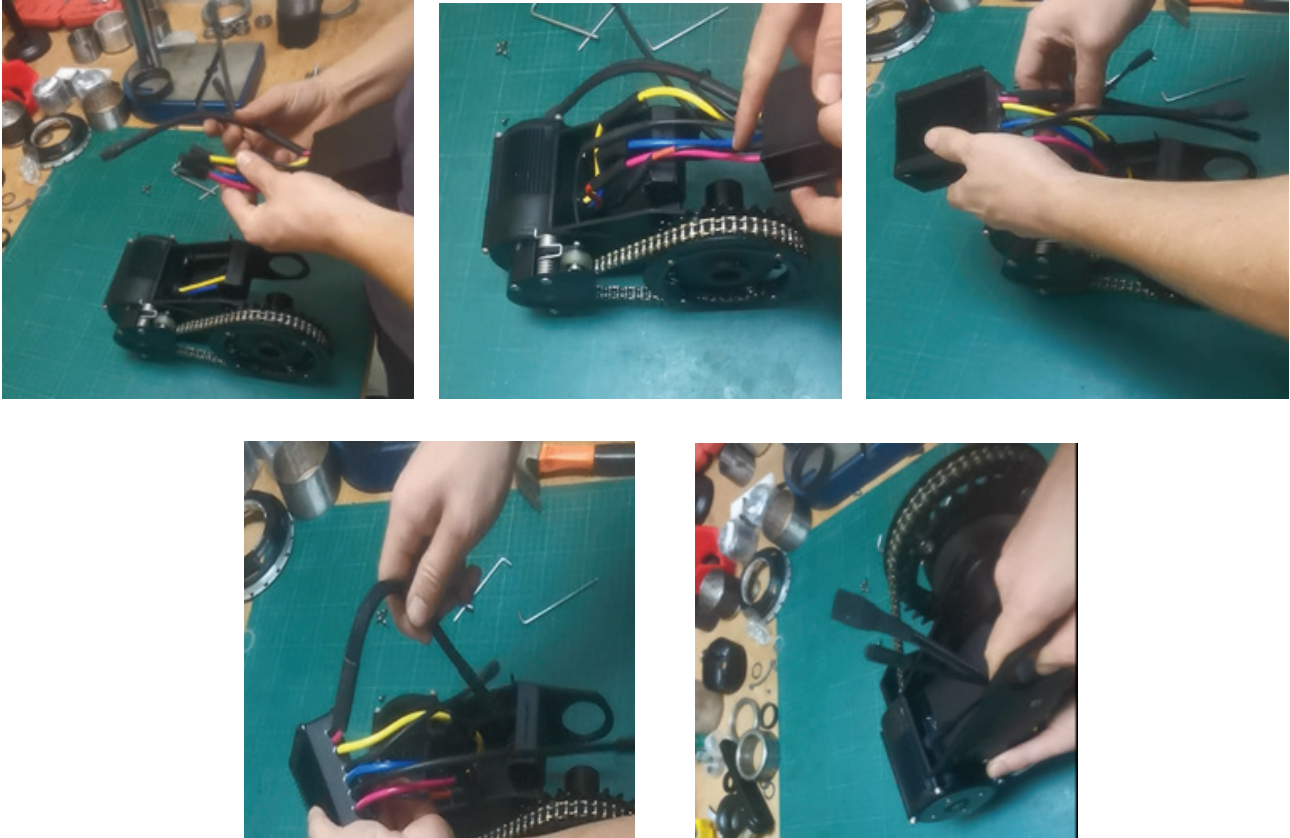
STEP 2:

Unscrew the BAC855 controller mount bolts from both sides and remove the controller & controller mount to install the X6 controller.



STEP 3:

Plug in the phase wires (yellow, blue, (green = red)) & insert the torque sensor wire, motor wire, XT90 connector at the back of the controller mounting plate.

**STEP 4:**

Gently bend all the wires, and the house them inside the controller housing, then tighten all the bolts on the controller mount.



And finished! As mentioned prior, kindly contact technical_support@cycmotor.com if further assistance is needed. Thank you!



STEP 5:

Tighten the bolts according to the kit you have as follows. (X1 Pro, M5 Bolts = red circle, X1 Stealth, M4 Bolts = green circle)



For X1 Stealth:

From the 4 circled areas, you can tighten the bolts on the upper 2 green circles, or the lower 2 green circles depending on your preference.



X1 Pro



X1 Stealth