

JB HI-FI

GET IT SET UP!



POWERED BY



WWW.JBHIFI.CO.NZ/INSTALL

MAIN INSTALLS



Each job **MUST** have a MAIN Installation service. This MAIN Installation includes provision for the Installation Provider to travel to the Premise within 30km of the nearest JB Hi-Fi store. Therefore, 1 MAIN Installation is required per job.

ADD ONS



Additional installations carried out whilst the Installation Provider is on-site for the MAIN Installation job are charged at the reduced add-on rate. This provides additional value for larger jobs by removing the travel provision from the price of the add-on service. This represents a great opportunity to consider adding more installs to a single job!

"FROM" PRICING



Pricing for each job is based on the average time it takes to complete the majority of similar jobs. A small number of jobs will need to be re-quoted to ensure they can be carried out safely and in accordance with our service quality standards. Our team will always be transparent about any additional costs on each job. If you feel your job may be more complex, contact us in advance to discuss.

TV FREESTANDING SETUP

Take the hassle out of setting up your new TV and let our tech heads work their magic and do it for you.



54" AND BELOW

FROM

\$129

SKU: 422921

55" AND ABOVE

FROM

\$179

SKU: 422922

What's included:

- Unboxing and installation of TV stand or feet and set up on a cabinet
- Connect to power and Wi-Fi
- Tune Free to Air channels
- Connect to 1 existing streaming service
- Re-connect up to 5 'plug & play' components (e.g. Blu-ray player or console)
- Basic tutorial on using your new TV (up to 15 mins)
- Clean up and disposal of packaging

What's not included: Removal and recycling of old TV, cable hiding behind the wall or in surface conduit, setup of other new audio or media components, supply of cables, advanced product tutorial beyond 15 minutes. **Additional fees apply for:** Additional travel is required for installation locations beyond 30km from the nearest JB Hi-Fi store or stock pickup location. Any additional parts, parking charges or extra labour that may be needed which your technician will discuss with you on the day.

TV WALL MOUNT SETUP

Take the hassle out of setting up your new TV wall mount and let our tech heads work their magic and do it for you.



What's included:

- Installation of a TV wall bracket to the wall
- Unbox and mount TV
- Connect to power and Wi-Fi
- Tune Free to Air channels
- Connect to 1 existing streaming service
- Re-connect up to 5 'plug & play' components (e.g. Blu-ray player or console)
- Basic tutorial on using your new TV (up to 15 mins)
- Clean up and disposal of packaging

What's not included: Removal and recycling of old TV, cable hiding behind the wall or in surface conduit, setup of other new audio or media components, supply of cables and wall bracket, advanced product tutorial beyond 15 minutes. **Additional fees apply for:** Installation heights above 1.5m for additional installers and work required to install safely. Additional travel is required for installation locations beyond 30km from the nearest JB Hi-Fi store or stock pickup location. Any additional parts, parking charges or extra labour that may be needed which your technician will discuss with you on the day.

ADD ONS

SOUNDBAR FREESTANDING SETUP



What's included:

We can unbox and set up your new soundbar on your cabinet and get it connected to your new TV and Wi-Fi, depending on your model, so your new viewing experience is sounding at its best. Plus, you'll get a basic tutorial on using your new soundbar (up to 15 mins) and we'll dispose of the packaging.

What's not included: Set up of a new streaming service account, advanced product tutorial beyond 15 minutes.

SOUNDBAR MOUNTED SETUP



What's included:

Installation of soundbar wall bracket to the wall. Unbox and mount soundbar. Connect soundbar to power, TV and Wi-Fi (depending on your model). Set up source and basic tutorial on using your new soundbar (up to 15 mins). Clean up and disposal of packaging.

What's not included: Set up of a new streaming service account, advanced product tutorial beyond 15 minutes. Supply of cables and wall bracket.

MEDIA SERVICE SETUP



ADD ON
FROM
\$49
SKU: 422926

What's included:

Set up and connect a media streaming device (e.g. Apple TV, Chromecast, Gaming Console, Fire TV Stick, Blu-Ray, PVR) to your new TV and Wi-Fi or Ethernet.

This includes connecting to 3 existing streaming service apps, setup Voice Assistant feature and a basic tutorial on using your new media streaming device and mobile app (up to 15 mins). Plus, we'll dispose of any packaging.

What's not included: Product delivery, removal and recycling of old product, supply of cables, set up of a new streaming service account (this is a paid ad-on service if you need it on the day), advanced product tutorial beyond 15 minutes.

OLD TV REMOVAL AND RECYCLE



ADD ON
FROM
\$49
SKU: 422932

What's included:

The safe removal and recycle of your old TV.

What's not included: TV's 65" or above or over 25KG that require 2 installers to be onsite to safely lift the TV. An extra installer can be added to a single person job for a fee. No extra fee is required if there are already 2 installers attending your installation job. Doesn't include the disconnection, removal or unmounting of the TV.

TV DELIVERY - DROP OFF ONLY



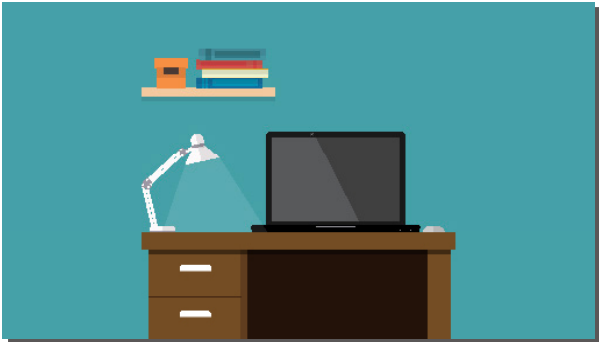
MAIN INSTALL
FROM
\$89
SKU: 422920

What's included:

- Save yourself the hassle and let us deliver your new TV safely to your house

COMPUTER SETUP

Take the hassle out of setting up your new computer and let our tech heads work their magic and do it for you.



MAIN INSTALL
FROM
\$149
SKU: 422924

What's included:

- Set up a new Windows or Mac computer
- Connect to internet via Wi-Fi or Ethernet
- Connect to peripherals such as; printer, keyboard, mouse and monitors
- Install any included Microsoft Office and Internet Security software
- Install internet browser of choice
- Install video conferencing app (e.g. Zoom, Microsoft Teams)
- Basic tutorial on using your new computer (up to 15 mins)
- Clean up and disposal of packaging
- Install preferred and popular apps (Spotify, Chrome, iTunes)

JB Tip: Have all your logins handy and a working internet connection. Backing up of an old device must be done prior to the new setup or restore. A Data Transfer add-on can be purchased in addition.

Additional fees apply for: Data transfer from an old computer or hard drive. Additional travel is required for installation locations beyond 30km from the nearest JB Hi-Fi store or stock pickup location. Any additional parts, parking charges or extra labour that may be needed which your technician will discuss with you on the day. Note: up to 1 hour has been allocated to this scope of work. Requests for additional work beyond the scope can be discussed with your technician on the day and will be billed separately.

WI-FI NETWORK SETUP

Take the hassle out of setting up your new home network devices and let our tech heads get it sorted.



MAIN INSTALL
FROM
\$149
SKU: 422925

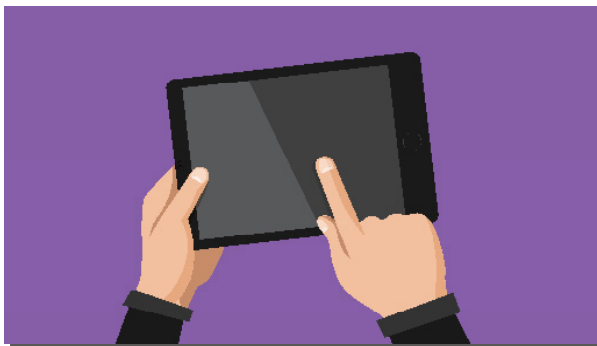
What's included:

- Set up your new Wi-Fi device such as; mesh, modem/router or smart home hub
- Connect to power and network access point
- Set up of Wi-Fi network name, password and secure administrator credentials
- Test Wi-Fi signal strength and locate up to 3 included additional units in the most optimal coverage position
- Connect up to 10 devices to the new network (e.g., mobiles, tablets, printers, TVs and gaming consoles)
- Download & set up the mobile application for the product
- Basic tutorial on using your new Wi-Fi network (up to 15 mins)
- Clean up and disposal of packaging

What's not included: Wall or ceiling mounting of devices and work that requires an electrician, such as hard wiring network access points or work on cabling within the home. **Additional fees apply for:** Additional travel is required for installation locations beyond 30km from the nearest JB Hi-Fi store or stock pickup location. Any additional parts, parking charges or extra labour that may be needed which your technician will discuss with you on the day. Note: up to 1 hour has been allocated to this scope of work. Requests for additional work beyond the scope can be discussed with your technician on the day and will be billed separately.

TABLET SETUP

Take the hassle out of setting up your new Tablet and let our tech heads get it sorted.



What's included:

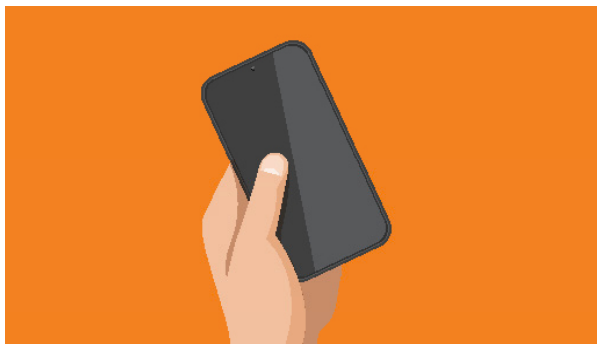
- Set up a new tablet (iOS or Android)
- Set up as a new device including OS account creation or restore from existing backup
- Connect to internet via Wi-Fi and/or Cellular
- Connect to peripherals such as; printer, keyboard and headphones
- Setup with 1 existing email address
- Basic tutorial on using your new tablet (up to 15 mins)
- Clean up and disposal of packaging

JB Tip: Have all your logins handy and a working internet connection. Backing up of an old device must be done prior to the new setup or restore. A Data Transfer add-on can be purchased in addition.

What's not included: Additional time beyond 1 hour. Data transfer from an old tablet or computer. Backing up an old device prior to setting up or restoring a new device. Additional travel is required for installation locations beyond 30km from the nearest JB Hi-Fi store or stock pickup location. Any additional parts, parking charges or extra labour that may be needed which your technician will discuss with you on the day. Note: up to 1 hour has been allocated to this scope of work. Requests for additional work beyond the scope can be discussed with your technician on the day and will be billed separately.

MOBILE PHONE SETUP

Take the hassle out of setting up your new mobile phone and let our tech heads get it sorted.



What's included:

- Set up a new mobile phone (iOS or Android)
- Set up as a new device including OS account creation or restore from existing backup
- Connect to internet via Wi-Fi and Cellular Network
- Connect to peripherals such as; printer and headphones
- Setup with 1 existing email address
- Basic tutorial on using your new mobile phone (up to 15 mins)
- Clean up and disposal of packaging

JB Tip: Have all your logins handy and a working internet connection. Backing up of an old device must be done prior to the new setup or restore. A Data Transfer add-on can be purchased in addition.

What's not included: Additional time beyond 1 hour. Creating a backup file of an old device to restore from. Backing up an old device prior to setting up or restoring a new device. Additional travel is required for installation locations beyond 30km from the nearest JB Hi-Fi store or stock pickup location. Any additional parts, parking charges or extra labour that may be needed which your technician will discuss with you on the day. Note: up to 1 hour has been allocated to this scope of work. Requests for additional work beyond the scope can be discussed with your technician on the day and will be billed separately.

SMART LIGHTING SETUP

Take the hassle out of setting up your new smart lights and let our tech heads get it sorted.



MAIN INSTALL
FROM
\$149
SKU: 422925

What's included:

- Set up and connection of up to 3 smart light bulbs or basic smart lighting kit to existing sockets or lamps
- Connect to Wi-Fi and bridge (if applicable)
- Mobile app download and set up onto your preferred device
- Light bulb set up and configuration within the mobile application including labelling
- Complete software/firmware updates as required
- Basic tutorial on using your new smart lights (up to 15 mins)
- Clean up and disposal of packaging

JB Tip: Have all your logins handy and a working internet connection.

What's not included: Work that requires an electrician, such as flood light and switch installations. **Additional fees apply for:** Additional travel is required for installation locations beyond 30km from the nearest JB Hi-Fi store or stock pickup location. Any additional parts, parking charges or extra labour that may be needed which your technician will discuss with you on the day. Note: up to 1 hour has been allocated to this scope of work. Requests for additional work beyond the scope can be discussed with your technician on the day and will be billed separately.

SMART SPEAKER SETUP

Take the hassle out of setting up your new smart speaker and let our tech heads get it sorted.



What's included:

- Set up of a smart speaker (e.g. Google Home & Assistant, Amazon Echo & Alexa)
- Connect to power and internet via Wi-Fi or Ethernet
- Mobile app download and set up onto your preferred device
- Connect to 1 existing music streaming service app
- Set up voice assistant feature
- Basic tutorial on using your new smart speaker (up to 15 mins)
- Clean up and disposal of packaging

JB Tip: Have all your logins handy and a working internet connection.

What's not included: Does not include creation of a new streaming service account, this is a paid add-on service. **Additional fees apply for:** Additional travel is required for installation locations beyond 30km from the nearest JB Hi-Fi store or stock pickup location. Any additional parts, parking charges or extra labour that may be needed which your technician will discuss with you on the day. Note: up to 1 hour has been allocated to this scope of work. Requests for additional work beyond the scope can be discussed with your technician on the day and will be billed separately.

ADD ONS

EXTRA DEVICE SETUP



What's included:

- Get an extra device set up that's not available as a specific service - this includes devices like a Printer, Keyboard, Monitor
- Provide product assessment, troubleshooting, demonstration and tutorial as required (up to 10 mins)
- Clean up and disposal of packaging

DATA TRANSFER

Take the hassle out of transferring your data and let our tech heads get it sorted.



What's included:

We'll help you backup and transfer all your data from your old device to your new device. This covers support up to 100GB.

Additional fees apply for: Data transfer from an old computer or hard drive beyond 100GB. Additional travel is required for installation locations beyond 30km from the nearest JB Hi-Fi store or stock pickup location. Any additional parts, parking charges or extra labour that may be needed which your technician will discuss with you on the day.

EXTRA TRAVEL RATE



1 PERSON PER KM

FROM

\$4

SKU: 350085

Extra charges apply for distances beyond 30km of the stock collection location. If no stock collection is required by the installer, the distance will be calculated from the customer's nearest JB Hi-Fi Store. Distances beyond 50km require a quote for pricing and availability.

Installer pickup & delivery is a premium service performed by our skilled tradespeople as part of an installation order. Customers with installation addresses beyond 30KM of the stock pickup location may wish to pay the additional KM rate to preserve the convenience of 1 appointment. Alternatively they may opt for Courier Delivery to keep delivery costs down by splitting their delivery from the installation across separate events. This is referred to as "2 Knock" fulfilment. See team members for details.

JB HI-FI INSTALLATION TERMS & CONDITIONS



WWW.JBHIFI.CO.NZ/INSTALL-TERMS/

INSTALLATION PRICE LIST

INSTALLATION SERVICE	MAIN		ADD ON	
	PRICE	SKU	PRICE	SKU
TV Freestanding Setup and Connect 54" and below	\$129	422921	-	-
TV Freestanding Setup and Connect 55" and above	\$179	422922	-	-
TV Wall Mount Setup	\$349	422923	-	-
Soundbar Freestanding Setup	-	-	\$49	422930
Soundbar Mounted Setup	-	-	\$89	422931
Media Service Setup	-	-	\$49	422926
Old TV Removal and Recycle	-	-	\$49	422932
TV Delivery Drop-Off Only	\$89	422920	-	-
Computer Setup	\$149	422924	-	-
Wi-Fi Network Setup	\$149	422925	-	-
Tablet Setup	\$149	422924	-	-
Mobile Phone Setup	\$149	422924	-	-
Smart Lighting Setup	\$149	422925	-	-
Smart Speaker Setup	\$149	422925	-	-
Extra Device Setup	-	-	\$49	422929
Data Transfer or Backup (up to 100GB)	-	-	\$99	422933
Extra Travel Rate (per KM)	-	-	\$4	350085

JB HI-FI

CUSTOMER SUPPORT

0800 569 007



POWERED BY



WWW.JBHIFI.CO.NZ/INSTALL