



LASER & BEAUTY

W E N U



NAIL BAR

ALL SERVICES INCLUDE
RUSSIAN MANICURE WITH
E-FILE

GEL HANDS



ACRYLIC STRENGTH BUT LIGHTER

PREMIUM
STRENGTH

Premium Base Colour	370
Premium with Gel Colour	420
Premium with Paint	390
French with Base Colour	400
French with Gel Colour	440
Ombre with Gel Colour	530

RUBBER
BASE

Rubber Base Colour	300
Rubber Base with Gel Colour	350
Rubber Base with Paint	320
French with Base Colour	330
French with Gel Colour	370
Ombre with Gel Colour	420

TIPS

Soft Gel Tips with Gel Colour	530
with Gel Backfill(once)	450
with Paint	430
with Paint Backfill(once)	350
with French	550

Acrylic Tips (Full Set)	520
with Acrylic Ombre	550
with Gel Colour	570
with Gel French/Ombre	600

Tips with Nelé Gel Colour	600
with Nelé Ombre	620

NAIL BAR

ALL SERVICES INCLUDE
RUSSIAN MANICURE WITH
E-FILE

ACRYLIC HANDS



Acrylic Overlay Natural/Colour	460
with Paint	480
with Gel Colour	510
with Ombre	490
with Gel Colour French	540
Acrylic 2/3 wk Fill, Buff Natural / Colour	350
Fill, Buff + Paint	370
Fill, Buff + Gel Colour	410
Fill, Buff + Ombre	380
Fill, Buff + Gel French/Omb	440

PAINT HANDS

MORGAN
TAYLOR[®]
Professional Nail Lacquer

Glo Express Mani Paint	180
Express Mani French	200

ADD ON ART

-GEL GLITTER PER NAIL	15
-BASIC NAIL ART PER NAIL: CHROME, MARBLE, INK, DOTTING, TRANSFER FOIL, SPIDER GEL, THICK GLITTER, STICKERS, FRENCH, NEON PIGMENT	25
-NAIL FIX PER NAIL	50
-SIGNATURE MANI	120

NAIL BAR

ALL SERVICES INCLUDE
RUSSIAN MANICURE WITH
E-FILE



TOES

New Gel Overlay Toes	280
New Gel Overlay French Toes	290
Glo Express Pedi Paint	180
Men/Woman's Clear Gel Buff & Shine	180

SIGNATURE PEDI

- No paint	330
- Paint	380
- Gel overlay	490
- French Gel Overlay	520



MEDI- PEDI

- No paint	470
- Paint	520
- Gel overlay	660
- French Gel Overlay	680

REMOVAL/SOAK-OFF

SOAK OFF GEL WHEN REAPPLYING.	65
SOAK OFF ACRYLIC / SOFT GEL WHEN REAPPLYING	80
SOAK OFF GEL & TIDY	120
SOAK OFF ACRYLIC & TIDY	140
SOAK OFF WITH REPAIR TREATMENT	195



WAXING

best wax in town!

SIDES & TOP	200	-
BRAZILIAN STRIP	275	-
BRAZILIAN EXTENDED	295	-
HOLLYWOOD	320	340
HOLLYWOOD EXTENDED	340	380
UNDERARMS	160	180
HALF ARM	180	210
FULL ARM	240	280
HALF LEG	230	250
3/4 LEG	250	340
FULL LEG	315	370
LIP OR CHIN	100	-
BROWS	100	110
BROWS + LIP	190	-
BROWS + CHIN	190	-
LIP + CHIN	190	-
EARS OR NOSE	100	100
LIP, CHIN + BROWS	270	-
FULL FACE	290	-
HALF BACK	160	220
FULL BACK	320	375
STOMACH	160	340

ItalWax®



CHEMICAL PEELS

At Glo Laser & Beauty we use Lamelle /Nimue /RegimA chemical solutions that harnesses your body's natural processes of renewal, which can largely be summed up as "discard" old skin cells to make space for new ones.

lamelle

Research Laboratories

TREATING AGEING & AGED SKIN

Lacti-Firm 30/10

R 585

Lacti-Firm 90/10

R 745

TREATING HYPER-PIGMENTATION

Beta Peel 15%

R 620

Beta Peel 20%

R 690

Augmented Beta Peel with TCA 10%

R 1 125

TREATING CONGESTION & ACNE

Beta Plus Peel 15%

R 530

Beta Plus Peel 20%

R 690

nimue

SKIN TECHNOLOGY

TCA PEEL 7.5%

R 970

A stronger peel that is a recommended treatment for acne, acne scarring, fine lines and wrinkles and photo-aged skin. Results in radiant and smooth skin.

35% GLYCOLIC PEEL

R890

Hydrating, deep exfoliating treatment improving skin texture & appearance

THERMAL DETOX PEEL

HOT HOT HOT

R 690

This is a peel that aids in removing all skin impurities by exfoliating your skin and stimulating collagen production. This thermo-sensory mechanism improves oxygenation.

CHEMICAL PEELS

RégimA[®]
SKIN TREATMENTS

LOVE!

INITIATION PEEL

R 425

A great treatment to introduce some of the fruit acids used in the RégimA Peel Treatments. For clients with sensitive /dehydrated skin types.

POWER PEEL 30%

R 590

This new generation, high technology peeling system. Suitable for all skin types. Gives skin renewed elasticity. Instant smoothing of fine lines & wrinkles. Pigmentation, ageing and scarred skin.

POWER PEEL 50%

R 600

Rejuvenating effects. Suitable for all skin types. Instant smoothing of deep lines & wrinkles. Helps eliminate and control pigmentation, scarred & sun damaged skin

DOUBLE WHAMMY

R 745

Acne Attack Pro Masque over Power peel 50% for stubborn pigmentation and deep seated wrinkles.

BODY PEELS

POWER PEEL 50% BACK TREATMENT

R 650

Incorporates gentle cleansing, exfoliation and antiseptic action together with sebum controllers and natural marine extracts. Problem skin solutions. Results clarity, inflammation control and anti-scarring.

POWER PEEL 50% INNER THIGH TREATMENT

R 680

Helps eliminate and control pigmentation, brightens

REJUVENATING HAND TREATMENT

R 345

An intensive exfoliation, smoothing, toning and regenerating treatment for age-spots, ageing and drying hands.

REJUVENATING VAJACIAL PEEL

R 450

Exfoliation, smoothing, toning and regenerating treatment for pigmentation, scarring.

FACIALS

FREE SKIN CONSULTATIONS



RegimA[®]
SKIN TREATMENTS

INITIATION FACIAL TREATMENT

R 550

Introduction to RegimA range for client that have not yet used RegimA and would like deeper level exfoliation.

INSTANT RADIANCE & LUMINOSITY

R 510

Dry/dehydrated skin that lack lustre

ACNE PRO DECONGEST(45min)

R 425

Acne Attack Pro Mask is a rapid acting peeling system for the treatment of Acne sufferers 30% Salicylic Acid and 12% Lactic Acid. Recommended for congested, blocked, problematic skin types.

RAPID REJUVO MASQUE FACIAL 'PEEL' (45min)

R 450

This treatment is a deep cleansing facial treatment with rejuvenation benefits that gives the skin instant luminosity and unparalleled smoothness. Lactic Acid 12%, smoothing, exfoliating. 10% Salicylic Acid unblocks sebaceous activity.

nimue
SKIN TECHNOLOGY

EXPRESS FACIAL (30min)

R 320

Cleanse, steam, moisturiser & sun-care.

THERAPEUTIC FACIAL

R 490

Pampering treatment. Cleanse, exfoliate, massage, moisturiser & mask customised to the client's skin needs.

DEEP CLEANSE FACIAL

R 590

Cleanse, exfoliate, extractions, massage, mask and moisturiser customised to the client's skin needs. Provides effective skin clarification. Includes High Frequency treatment.

lamelle
Research Laboratories

ESSENTIALS HYDRATION CALMING

R 530

Cleanse, exfoliate, extractions, massage, soothing serum with a hydrating mask, moisturiser & sun-care.

ESSENTIAL AGE PREVENT

R 530

Cleanse, exfoliate, extractions, massage, age prevent mask moisturiser & sun-care.



AESTHETIC FACIALS

MICRONEEDLING FACIAL

Collagen induction therapy which stimulate the skin's natural healing response and increase collagen production, resulting in smoother, firmer, and more youthful-looking skin.



R 1500

- Reduces fine lines and wrinkles
- Improves skin texture and tone
- Incr. absorption of skincare products
- Boosts skin radiance
- Minimizes acne scars

DERMAPLANING FACIAL

Skin resurfacing treatment to gently scrape away the outermost layer of dead skin cells and fine vellus hair, also known as peach fuzz. Skin is left smooth, soft, and bright, with a more even texture and tone.

R 500

- Reduces fine lines and wrinkles
- Exfoliation
- Improves skin texture and tone
- Makeup glides on smoother
- Brighter, youthful looking skin
- Absorption of skincare products



NIR SKIN TIGHTENING FACIAL

Glo Laser & Beauty makes use of The Alma NEAR INFRARED, this uses high-power light energy to safely and effectively heat the sub-dermal tissue, stimulating the growth of new collagen and tightening laxity while also rejuvenating the skin for a youthful glow WITH NO DOWNTIME.

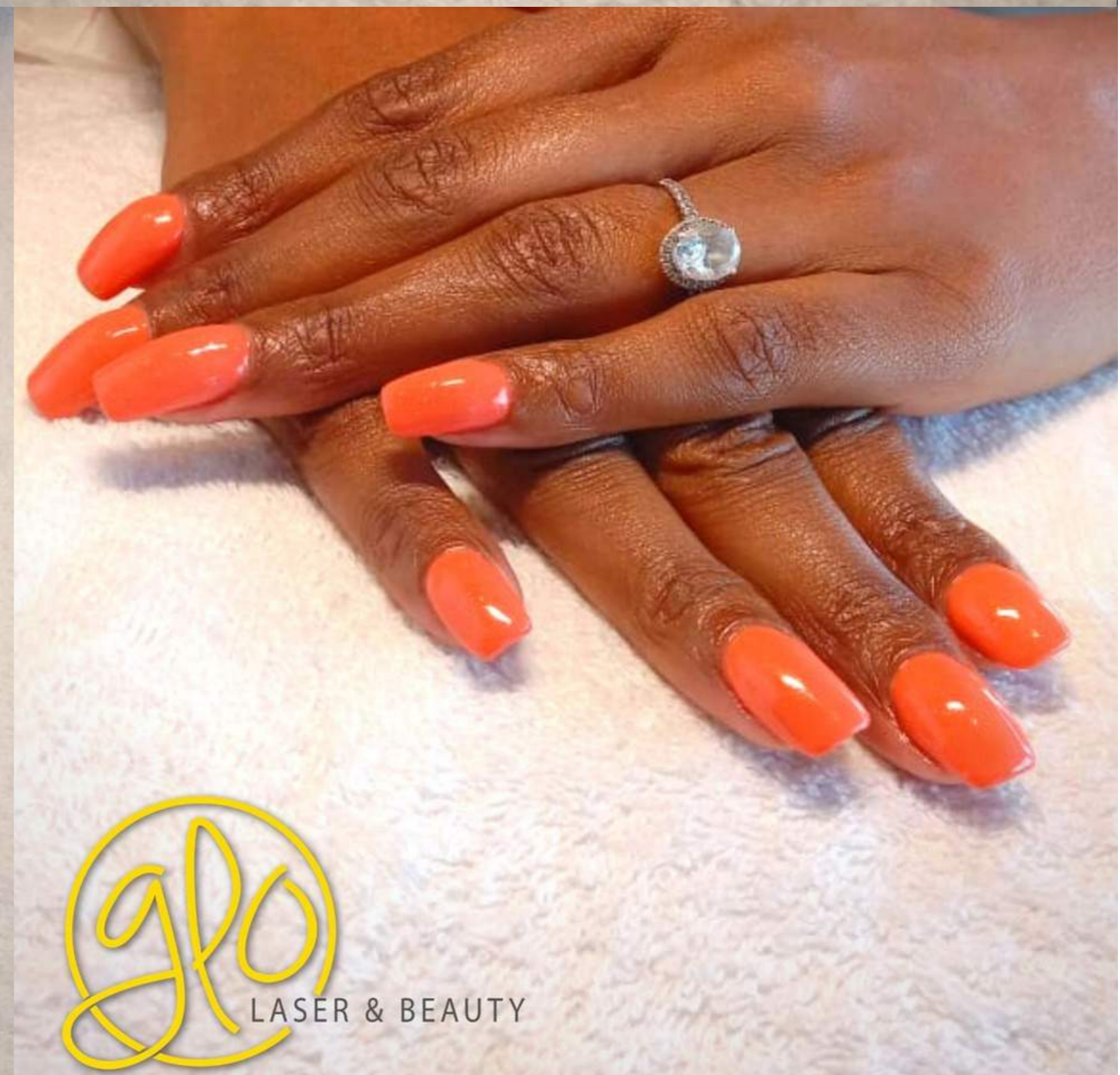


FACE

- | | |
|------------------------|--------|
| Face | R 1100 |
| Face & Neck | R 1600 |
| Face, Neck & Décolleté | R 2050 |

Facial Rejuvenation
Non-Surgical Skin Tightening
Youthful Glow





MICRONEEDLING



The Alma Beauty Reboost offers a complete facial rejuvenation treatment. Combining Ultrasound with the depth changing Pixel Pen achieves brilliant results for improving the appearance of skin imperfections.

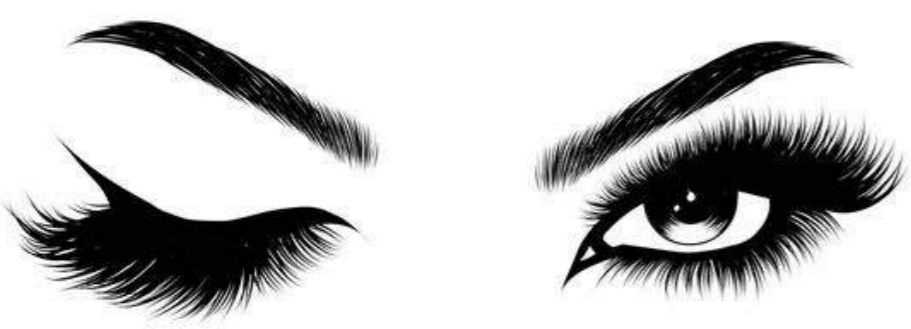
Complete Facial Rejuvenation
Stretch Mark Reduction
Scar Reduction
Anti-Ageing

AMAZING!

FULL FACE	1500
FACE + NECK	1700
FACE, NECK + DECOLLETÉ	1900
SCARS(<100cm grid)	950



BROWS & LASHES *hello beautiful*



TWEEZE BROWS	70
WAX BROWS	100
TINT BROWS	100
TINT LASHES	120
TINT BROWS + LASHES	200
BROW LAMINATION	475
LASH LIFT	475
LASH LIFT & TINT	545
BROW LAMINATION, WAX & TINT	640

LASHES

CLASSIC

NEW SET	700
2 WEEK FILL	400
3 WEEK FILL	500

HYBRID

NEW SET	750
2 WEEK FILL	500
3 WEEK FILL	550

VOLUME

NEW SET	800
2 WEEK FILL	600
3 WEEK FILL	650



SLIMMING WRAPS

BIOMINCEUR
REDEFINES YOUR CURVES

BioMinceur Slimming Wraps, one of the strongest professional products available today, is full of essential oils, algae and plant extracts & caffeine which results in a wide range of additional therapeutic benefits.

GET 10% OFF PACKAGES OF 8+

SAVE
on
packages

STOMACH + BACK (up to size 40)	650
BUTTOCKS (up to size 40)	495
LEGS (up to size 40)	750
UPPER ARMS (up to size 40)	450
DOUBLE CHIN (up to size 40)	550
BREASTS (up to size 40)	550
Sizes above 40 add to existing pricing	+R150

MASSAGES

Lillian Terry International is our preferred homeopathic aromatherapy oils. Our outcome-based massage will leave you feeling renewed and relaxed.



SWEDISH

The Full Body (60 min)	560
Back & Neck (30mins)	370
CEO head, neck & shoulder (45mins)	420

AROMATHERAPY

The Full Body (60 min)	600
------------------------	-----

HOT STONE

Full Body (60mins)	595
Back & Neck (30 mins)	380

VAJACIAL



PREVENTS INGROWNS
RADIANCE
BRIGHTENING/PIGMENTATION
SCARRING

550

A Vajacial is typically a 30-45 minute treatment, which includes a cleanse, steam, exfoliant, extractions of ingrown hairs, followed by a custom jelly mask, completed with a skin brightening serum and aftercare. (done 3days after waxing/laser)

BUM FACIAL



A Peach Facial is typically a 30-45 minute treatment, which includes a cleanse, steam, exfoliant, extractions of ingrown hairs, followed by a custom jelly mask, completed with a skin brightening serum and aftercare. (done 3days after waxing/laser)



PREVENTS INGROWNS
RADIANCE
BRIGHTENING/PIGMENTATION
SCARRING

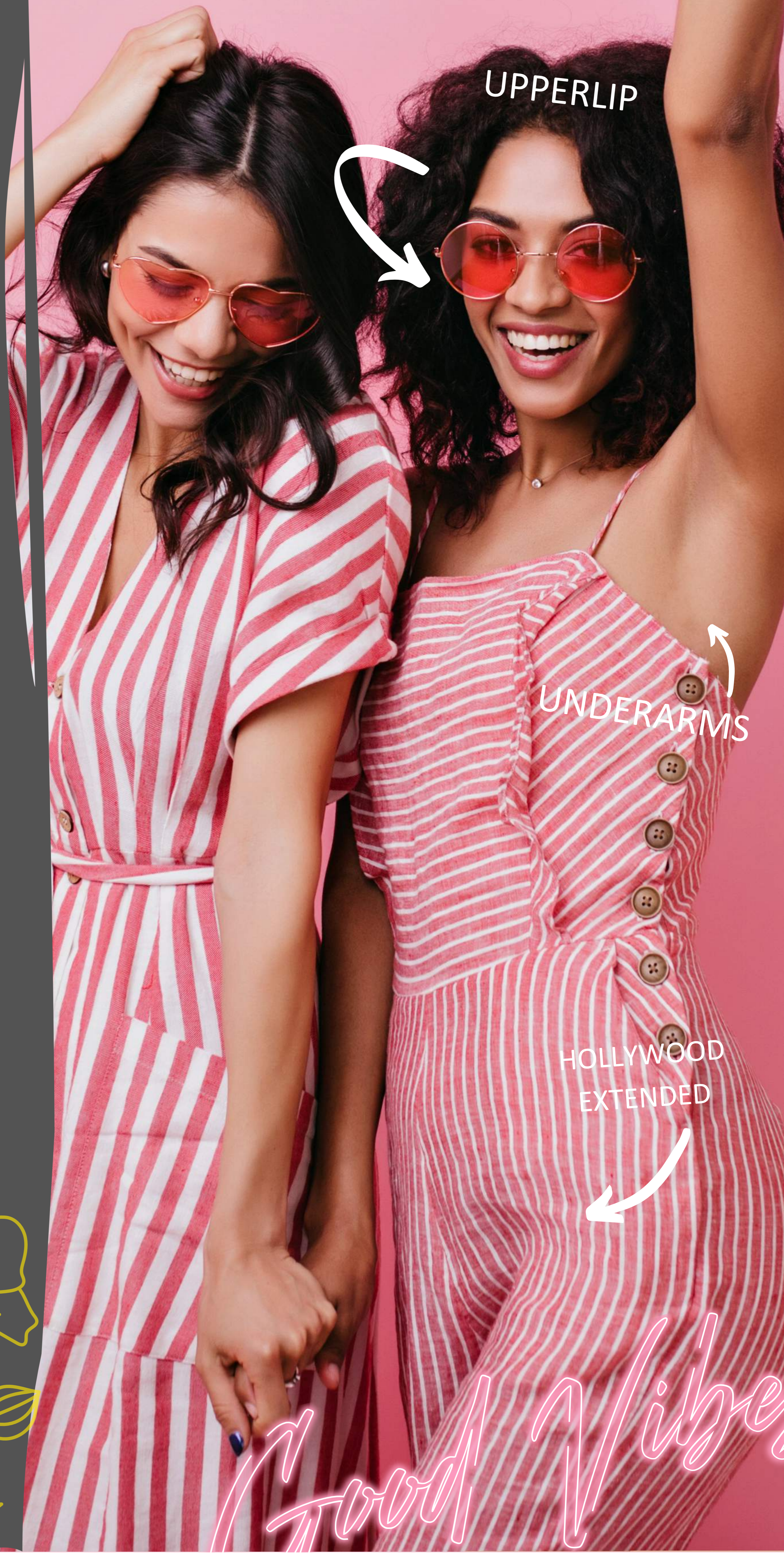
550



CARE - FREE
HAIR - FREE
CARE - FREE
HAIR - FREE

CARE - FREE
HAIR - FREE
CARE - FREE
HAIR - FREE

LASER HAIR REMOVAL



UPPERLIP

UNDERARMS

HOLLYWOOD
EXTENDED

Good Vibes



LASER HAIR REMOVAL



Free test-patch included.



Glo Laser & Beauty makes use of The Soprano Ice laser which will liberate you from daily shaving & tedious plucking. ALL SKIN TYPES

FACE

	Ladies	Gents
Upper-Lip	R 280	R 330
Chin	R 280	R 330
Unibrow	R 280	R 330
Top-Brow	R 280	R 330
Shave Lines	R 280	R 330
Forehead	R 300	R 380
Sideburns	R 330	R 360
Cheeks	R 350	R 400
Neck (front)	R 400	R 600
Beard (excl. neck)	R 600	R 800
Full Beard (incl. neck)	R 700	R 900
Full Head	R 1200	R 1500
Full Face	R 1300	R 1600



BACK

	Ladies	Gents
Neck	R 350	R 400
Mini Lower Back	R 600	R 800
Shoulders	R 650	R 850
Half Back	R 1200	R 1600
Full Back	R 1700	R 1900

FRONT

	Ladies	Gents
Areola	R 150	R 200
Belly Button Path	R 280	R 330
Cleavage	R 280	R 330
Stomach	R 900	R 1300
Chest	R 900	R 1300
Chest & Stomach	R 1700	R 2500



ARMS

	Ladies	Gents
Fingers	R 280	R 330
Hands (incl. fingers)	R 300	R 350
Underarms	R 550	R 650
Half Arm (excl. elbow)	R 700	R 1000
Half Upper (excl. elbow)	R 750	R 950
Half Arm (incl. elbow)	R 900	R 1200
3/4 Arm	R 1100	R 1400
Full Arm	R 1500	R 1800



LASER HAIR REMOVAL



Glo Laser & Beauty makes use of The Soprano Ice laser which will liberate you from daily shaving & tedious plucking. ALL SKIN TYPES. Free test-patch included.

LEGS	Ladies	Gents
Toes	R 280	R 330
Feet (excl. toes)	R 290	R 340
Feet (incl. toes)	R 300	R 350
Half Leg Lower (excl. knee)	R 1500	R 1600
Half Leg Lower (incl. knee)	R 1600	R 1700
Half Leg Upper (excl. knee)	R 1600	R 1700
Half Leg Upper (incl. knee)	R 1700	R1800
3/4 Legs	R 2000	R 2200
Full Legs	R 2800	R 3200

BIKINI	Ladies	Gents
Sides	R 550	R 750
Sides & Top	R 650	R 850
Brazilian (Strip)	R 850	R 1050
Brazilian Extended	R 950	R 1150
Hollywood	R 1050	R 1250
Hollywood Extended	R 1150	R 1350




GET 10% OFF A PACKAGES OF 5
GET 20% OFF PACKAGES OF 8, 10 or 12




CONTACT US

GLO LASER AND BEAUTY

PARKVIEW SHOPPING CENTRE
SSHOP G154, CNR NETCARE & GARSFONTEIN RD
MORELETA PARK, PTA EAST
GAUTENG

 +27 12 992 6041

 +27 63 618 9575

 parkview@globeauty.co.za

TRADING HOURS

MON-FRI 08:00 - 18:00

SAT 08:00 - 18:00

SUN 09:00 - 14:00

PUBLIC HOL 09:00 - 15:00



FOLLOW US

 glolaserandbeauty

 @globeautysa

 www.globeauty.co.za

10 REASONS

It's the experience! Our salons bring a completely new experience and vibe to beauty treatments like never seen before. Walk out feeling like a million bucks.

We are dedicated to bringing our clients only the best quality. Not only do we have the latest cutting-edge technology in-store but also award-winning systems.

Industry experience counts! With 10 years' industry experience, you can rest assured you are in good hands.

Our therapists are handpicked and go through rigorous training to offer you only the best and speediest treatments with a big smile.

You are our priority! We strongly believe in customer care and service and will go the extra mile to answer any questions and take care of you.

Hygiene is key and we take this to heart. No double dipping our spatulas with our wax treatments, gloves are worn during all treatments and all equipment is sanitized.

Make a difference! We believe in making you feel renewed and more confident than ever before, it's not just a beauty treatment.

Have fun! We are full of laughter, smiles and the latest dance moves from around the world.

Always growing! Ongoing training and development mean you will get the best techniques and products available.

We are a family! Glo was started by a family and now you are part of that family.

