

# BrewerAccess

## EXAM TABLE

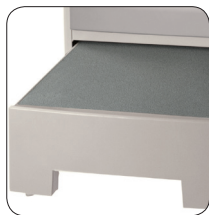


### Abundant Storage Capacity

- Largest storage capacity available
- Patented pass-through side drawers
- Two additional spacious front drawers
- Convenient table paper roll storage

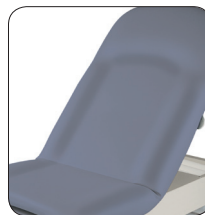


Explore the Access Exam Table family here. →



### Large Step

- Most secure step
- 17.7" x 20.4" surface
- Stable four leg design
- Fully adjustable
- Allows patients to safely and easily get on and off table



### Comfortable, Ergonomic Upholstery

- Seamless, easy to clean surface
- Resistant to medicinal type stains
- Available in 15 standard colors
- Cal-133 fire code compliant upholstery available
- Simple pneumatic lift backrest



### Pass-Through Drawers

- Patented pass-through side drawers allow right or left access
- Eliminates right and left hand setup problems



### Ergonomic Stirrups

- Extendable, adjustable
- Conveniently stored in the table
- Manually extended through infinite positions and four lateral positions



### Paper Roll Storage

- Convenient table paper storage
- Accepts 21" x 3.5" and 18" x 3.5" paper rolls
- Storage for up to 6 additional paper rolls under backrest



### Standard Outlets

- Duplex
- Hospital-grade
- 115VAC, 60Hz
- 5.8 amps max

Brewer

Furnishing solutions for safe practices.

# BrewerAccess

## EXAM TABLE

### Advanced Safety

- Large patient step
- Stable four leg step design
- Largest step surface available
- Step surface area: 17.7" x 20.4" (45 cm x 51.8 cm)

### Patient Comfort

- Simple pneumatic backrest for easy patient positioning
- Multi-density, bolstered support upholstery
- Leg extension/plastic debris tray
- Adjustable ergonomic stirrups

### Abundant Storage

- Patented pass-through side drawers accessible from right or left side of the table
- Drawer stops (provided) allow drawer to open from only one side if desired
- Front drawer: 19.8" x 19.2" x 3.8" (50.3 cm x 48.8 cm x 9.7 cm)
- Side drawers: 22.6" x 20.2" x 7" (57.4 cm x 51.3 cm x 17.8 cm)
- Covered storage for up to 6 additional paper rolls
- Paper roll storage capacity: 23" x 23" x 3.25" (58.4 cm x 58.4 cm x 8.3 cm)
- Slide through holder accepts 21" x 3" (53.3 cm x 7.6 cm) and 18" x 3" (45.7 cm x 7.6 cm) paper rolls

### Certifications

All Brewer products conform to US and Canadian electrical and medical industry codes and regulations and meet or exceed industry requirements.

- UL 60601-1



### Table Specifications

- 500 lb (226 kg) weight capacity
- Standard 5-year warranty
- Height: 32" (81.3 cm)
- Width: 28" (71.1 cm)
- Length: 57.3" extends to 71" (145.5 cm - 180.3 cm)
- Leg extension length: 15" (38.1 cm)
- Step Height: 8" (20.3 cm)
- Step Length: 17.7" (45 cm)
- Step Width: 20.4" (51.8 cm)
- Hospital-grade duplex electrical outlets
- 115VAC, 60Hz, 5.8 amps max
- Optional 5° pelvic tilt / 60-Watt front drawer heater
- Easy to clean, seamless upholstery
- 15 standard upholstery color options
- Cal-133 fire code compliant upholstery available in 4 colors
- Custom colors also available

#### models

#5000	Access Exam Table with pneumatic back
#5001	Access Exam Table with pneumatic back, pelvic tilt and drawer heater

#### accessories

#98464	stainless steel treatment pan
#100253	urology drain pan system
#100407	front drawer dividers (can order up to 7)
#102022	Brewer Welch Allyn® IV bracket (plant installed)
#102023	Brewer Welch Allyn® IV bracket (field installed)

The Brewer Company is an ISO 13485:2003 certified company.

All Brewer Access™ Exam Tables come with a 5-year warranty.

The Brewer Company reserves the right to improve or modify the design of its products consistent with new methods and techniques.

Call your local Brewer sales representative to learn about our complete product line.

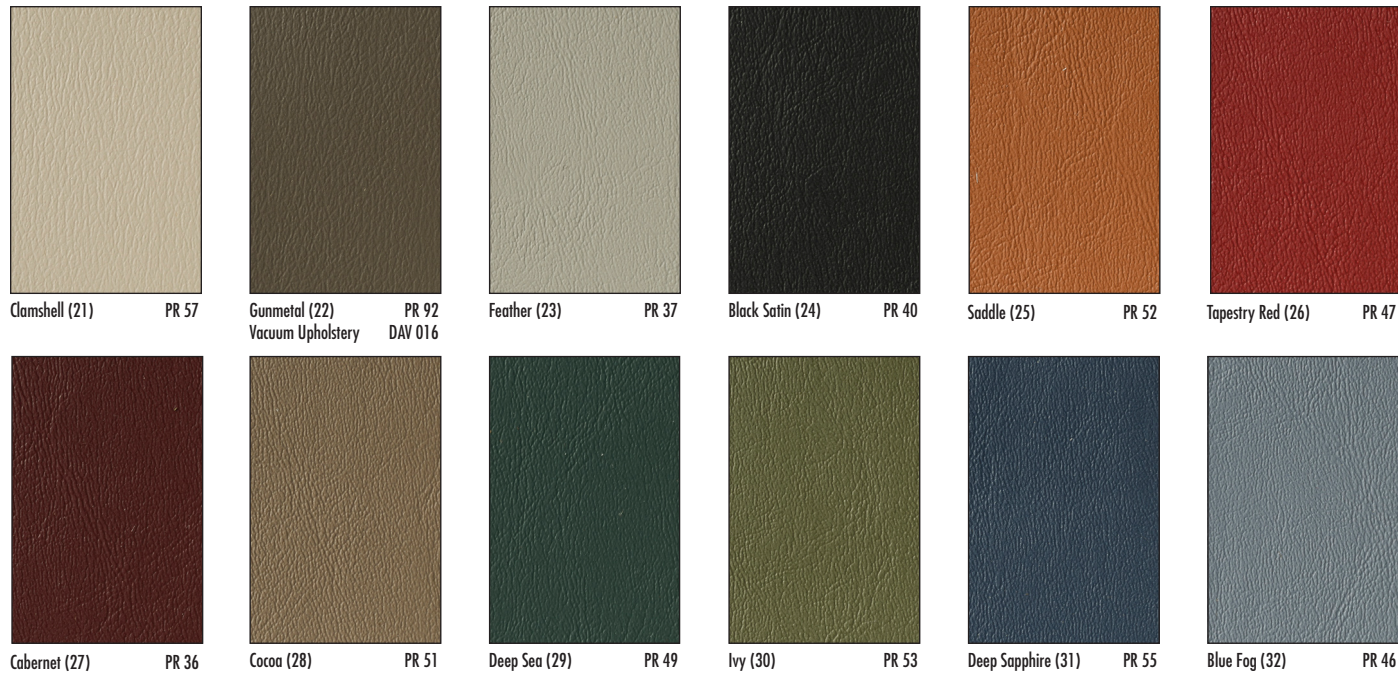
The Brewer Company LLC  
N88W13901 Main Street, Menomonee Falls, WI 53051  
1.888.Brewer.1 | [www.brewercompany.com](http://www.brewercompany.com)

# Brewer



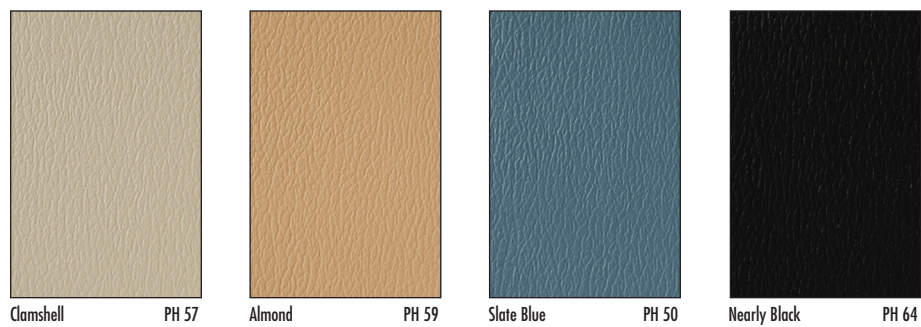
## Standard Upholstery Color Selections

For Brewer Tables, Side Chairs, Blood Drawing Chairs and Exam Stools



## California Technical Bulletin 133 Upholstery Color Selections (CAL-133)

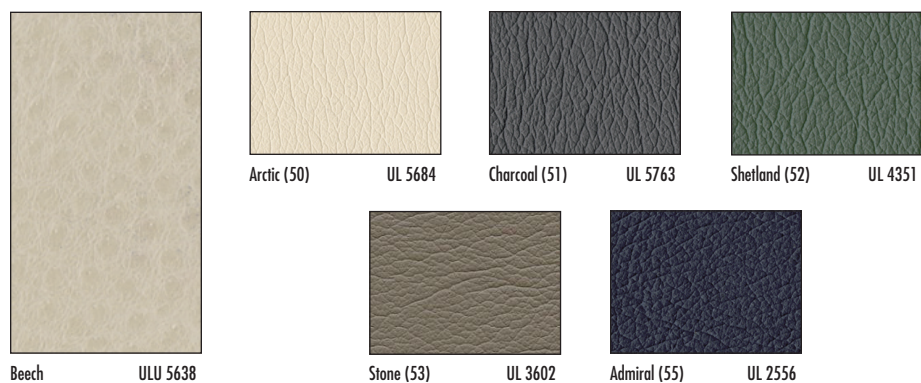
For Brewer Tables, Century Series Stools and Value Plus Series Pneumatic Stools



CAL TB 133 is a written legal standard outlining flammability test procedures for upholstered furniture. These vinyl color selections contain a flame blocking barrier that helps to prevent ignition, reflects heat and is flame retardant.

## Premium Plush Upholstery Color Selections

For Brewer Assist Procedure Tables, Access High-Low Exam Tables, Side Chairs and Century Series Stools



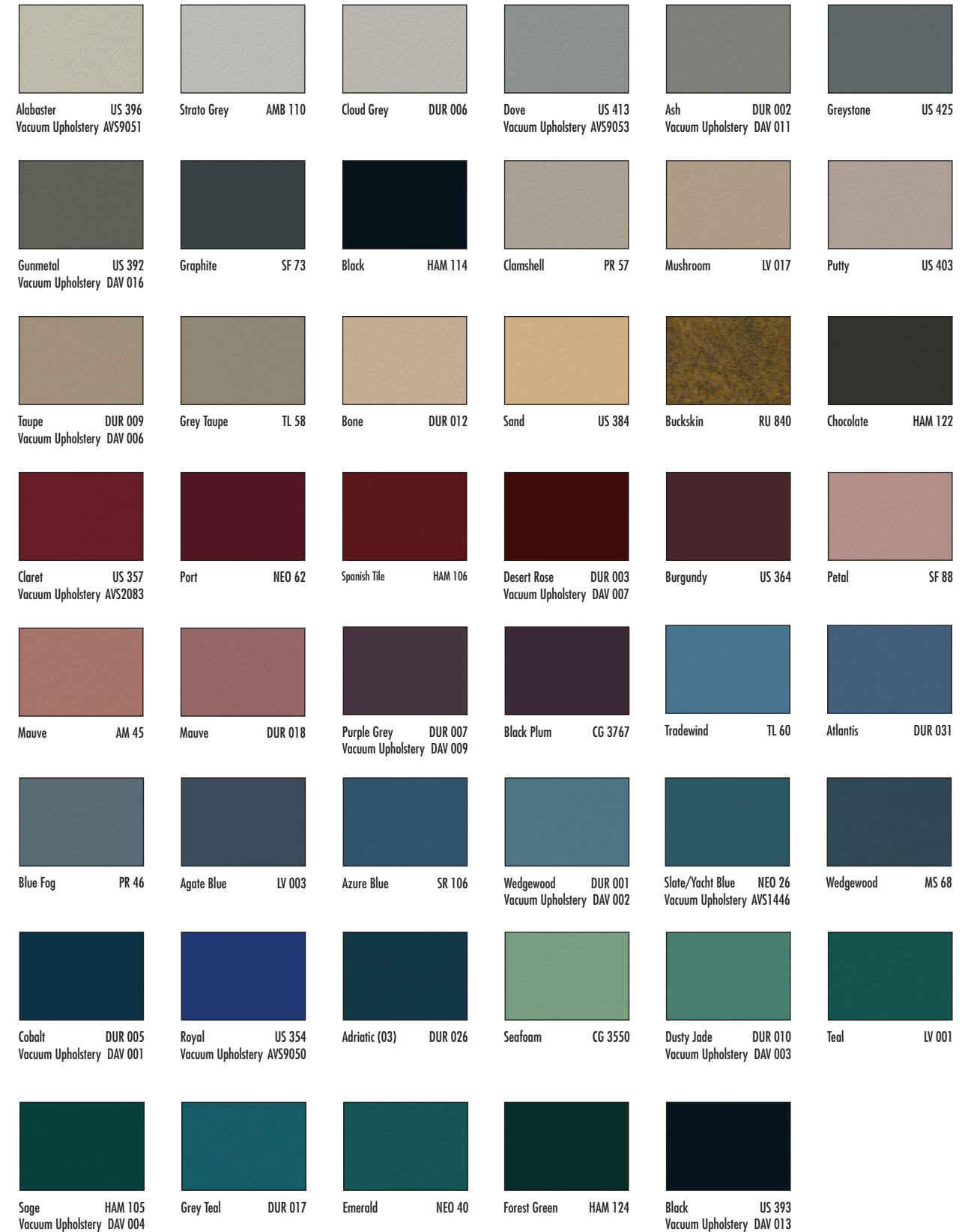
All Premium Plush Upholstery Colors are Ultrafabrics ULTRALEATHER™.

**Note:** Tables featuring a plush upholstery top are two-toned, stitched, with Beech and one of the premium plush upholstery colors. Exam stools and side chairs are one solid color, stitched. (-UL)

For Actual Material Swatches call 1•888•Brewer•1

## Additional Standard Upholstery Color Selections

For Brewer Exam Stools Only



For Actual Material Swatches call 1•888•Brewer•1