

# EP600

# Energy Storage System

BLUETTI App User Manual



**Copyright © 2023 Shenzhen PowerOak Newener Co., Ltd. All rights reserved.**

No part of this document may be reproduced or transmitted in any form or by any means without the prior written consent of Shenzhen PowerOak Newener Co., Ltd.

### **Notice**

BLUETTI's products, services, and features are subject to the agreed-upon terms and conditions during purchase. Please note that some products, services, or features described in this manual may not be available under your purchase contract. Unless otherwise specified in the contract, BLUETTI makes no representations or warranties of any kind, express or implied, with respect to the contents of this manual.

The contents of this manual are subject to change without notice. Please get the latest version from: <https://www.bluettipower.com/pages/user-guides>

If you have any questions or concerns about this manual, please contact BLUETTI support for further assistance.

# Contents

|                                    |           |
|------------------------------------|-----------|
| <b>1. Introduction</b>             | <b>01</b> |
| <b>2. Real-time Monitoring</b>     | <b>01</b> |
| 2.1 Operation Status               | 01        |
| 2.2 Energy Flow Status             | 02        |
| 2.3 Inverter Status                | 02        |
| 2.4 Energy Statistics              | 03        |
| <b>3. Device Management</b>        | <b>03</b> |
| 3.1 Basic Settings                 | 03        |
| 3.2 Working Modes                  | 05        |
| 3.3 Advanced Settings              | 06        |
| <b>4. Practices</b>                | <b>07</b> |
| 4.1 Charge via Grid                | 07        |
| 4.2 Feed to Grid                   | 07        |
| 4.3 Offset Peak-hour Energy Usage  | 08        |
| 4.4 Prioritize PV Charging         | 09        |
| 4.5 Backup Power                   | 10        |
| 4.6 Device Control in Offline Mode | 11        |
| 4.7 Device Sharing                 | 11        |

# 1. Introduction

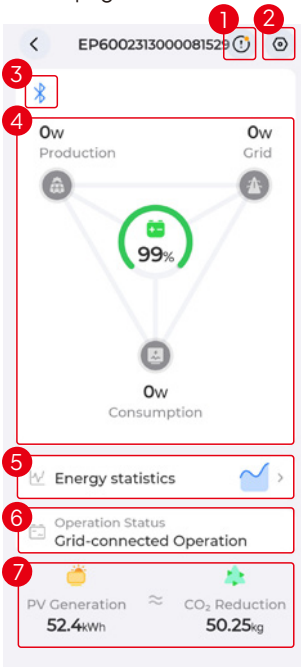
To effectively keep track of and control your EP600 Energy Storage System (ESS), begin by downloading and installing the user-friendly BLUETTI App. Once installed, connect the App to your device. For step-by-step instructions on how to register, log in, configure your network, and connect your device, simply refer to the *BLUETTI App User Manual*. This manual is designed to help you easily monitor, manage, and perform various operations for your EP600 ESS.

## 2. Real-time Monitoring

The App provides you with important details like the current battery level, energy flow status, and other key metrics, allowing you to monitor and track the performance of your EP600 ESS effectively. Additionally, in case of any malfunctions or alarms, you can view real-time alerts so that you can take immediate action to deal with any issues in a timely manner.

### 2.1 Operation Status

Connect the App to your EP600 ESS via Bluetooth or WiFi, and you'll be directed to the operation status page.



Tap to check the current alarm(s) and alarm history.



Tap to check and change system settings, like System Switch, Time Control Switch, Working Mode, Advanced Settings, etc.



Bluetooth / WiFi connection successful.

④ Energy Flow Status

Please refer to **Energy Flow Status** for details.

⑤ Energy Statistics

Tap to view the energy data by day, month, year, or up to the current date.

Please refer to **Energy Statistics** for details.

⑥ Inverter Status

Please refer to **Inverter Status** for details.

⑦ PV Generation & CO<sub>2</sub> Reduction




Check out the total solar energy generated and carbon emissions saved by the EP800 ESS over time.

## 2.2 Energy Flow Status

The animation gives you a simple way to understand how energy is flowing.



**100%** SoC (State of Charge). It indicates the remaining battery level.

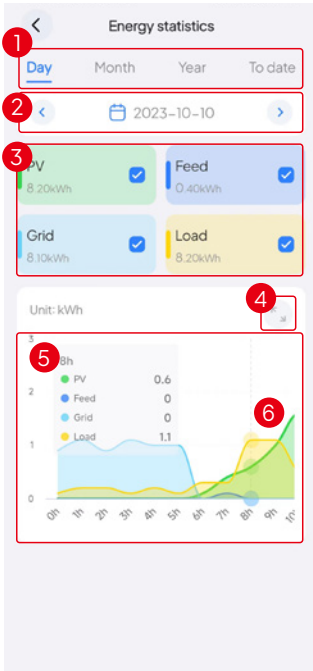
-  PV generation. It shows how much power the EP600 ESS is drawing from your rooftop solar or solar panel(s). Tap to view more details.
-  Grid charging or feeding. It shows how much power the EP600 ESS is drawing from or feeding back into the grid. Tap to view more details.
-  Load consumption. It shows how much power is supplying to your household appliance. Tap to learn more about where the power is going.

## 2.3 Inverter Status




- **Off:** The system switch is turned off or forced off due to a serious failure.
- **Off-grid Operation:** The System Switch is turned on and the system operates independently without relying on the electrical grid. The inverter converts the DC power from the battery and solar system into AC power for home use.
- **Grid-connected Operation:** The System Switch is turned on and the system is connected to the grid. In this case, the system and loads can draw power from the grid and the solar system. If allowed, the user has the option to sell excess power back to the grid for financial gain.

## 2.4 Energy Statistics

It allows you to view the PV Generation, Grid Consumption, Feed to Grid, and Load Consumption by day, month, year, or up to now.

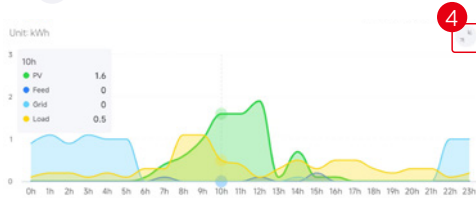


① Tap to view data by Day, Month, Year, and To date.

② Tap  or  to go back or forth between time periods. If you want to view data for a specific time, click  and select your desired date.

③ Check the boxes to display relevant data, uncheck to hide.

④ Tap  to zoom in on the chart to view it full screen.




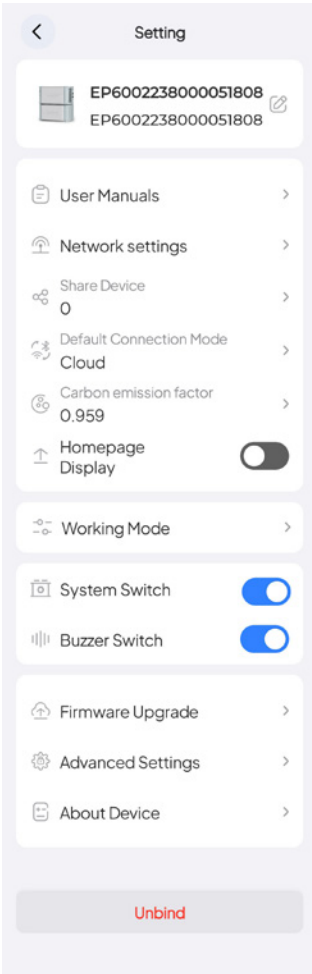
⑤ Tap on the chart to view detailed data for a specific time.


⑥ Swipe left or right on the chart to view the data for a specific timestamp.

## 3. Device Management

### 3.1 Basic Settings

On the operation status page, tap  to access the **Setting** page. You can optimize your power usage by customizing various settings, including the Charge/Discharge schedule, State of Charge (SoC) limits, and other relevant configurations.



- **Device Name:** Tap  to modify.
- **User Manuals:** Tap to view the product documentation.
- **Network settings:** To configure the WiFi network. Please refer to the “Cloud Connection” of **BLUETTI App User Manual** for details. Only available when you connect to the EP600 ESS via Bluetooth.
- **Share Device:** Tap to share your EP600 ESS. Please refer to **Device Sharing** for details.  
**Note:** The generated QR code will be valid for 10 minutes.
- **Default Connection Mode:** To modify the device's default connection mode. Once saved, whenever you tap on the device image on the My Device page, it'll automatically connect using the chosen mode. .  
**Note:** The App is programmed to use the Cloud as the default connection mode.
- **Carbon emission factor:** To calculate your reduced carbon emission.  
**Note:** Reduced carbon emission (kg) = Solar power generation (kWh) × Carbon emission factor
- **Homepage Display:** Once enabled, the device will show up on the App's Home page. Tap the device image to connect seamlessly and quickly.
- **Working Mode:** Tap to set the working modes.
- **System Switch:** The main switch of the EP600 ESS. Keep it on if you want the EP600 ESS to charge and discharge. If it's off, the system has no input or output and will automatically shut down.

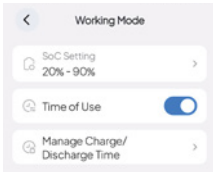
**Note:** If you're upgrading the firmware, connecting cables or not using the system, turn the **System Switch** off.

- **Buzzer Switch:** Enable to sound an alarm when the device encounters hardware faults.
- **Firmware Upgrade:** Go to the **Firmware Upgrade** page and tap **Start** to upgrade. Once the upgrade is completed, it'll prompt that **You're up to date**.

**Note:** This feature is only available when you connect to the EP600 ESS via Bluetooth.

- **Advanced Settings:** To check and change more settings.
- **About Device:** The information about EP600 ESS and other related devices.
- **Unbind:** Tap to unbind your BLUETTI account with the EP600 ESS.

## 3.2 Working Modes



### • SoC Setting

1. Tap **SoC Setting** and a pop-up shows up.
2. Slide the orange bar to your desired **SoC High** value.
3. Slide the blue bar to your desired **SoC Low** value.
4. Tap **OK** to save the settings.

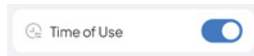
**SoC Low:** It's set to 20% by default. When the system is connected to the power grid, it'll stop supplying power to your appliances once the battery level drops below 20%. However, if there is no power grid available, the system will continue to power your appliances until the battery level reaches 0%.



**SoC High:** It's set to 80% by default. This means that the system will stop charging from the grid when the battery level reaches 80%, and seamlessly switch to solar charging for the remaining capacity.

### Time of Use

Activate this switch to enable the **Manage Charge/Discharge Time** function.

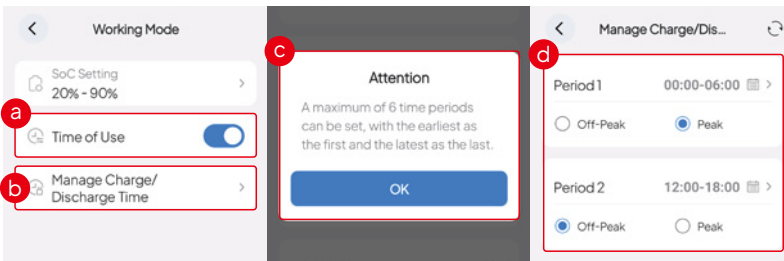


### Manage Charge / Discharge Time

You can set 6 time periods in order, with the earliest as the first and the latest as the last.

- a. Turn on the **Time of Use**.
- b. Tap **Manage Charge/Discharge Time**.
- c. Select **OK** in the **Attention** pop-up.
- d. Set a schedule with **Off-Peak** and **Peak**.

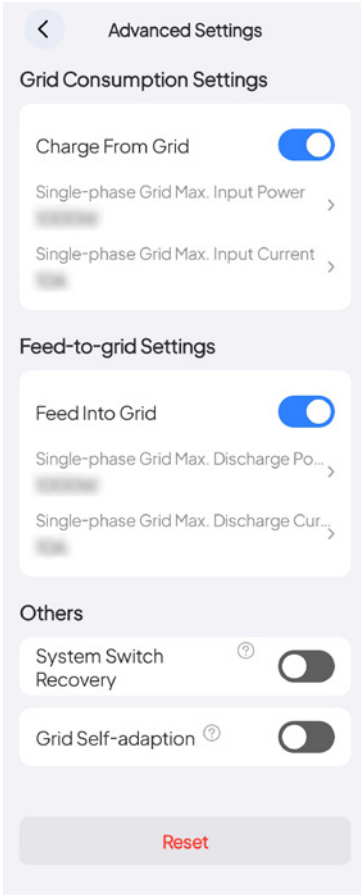
**Note:** Make sure there is no overlap or confusion between different periods.





If you want to charge the system from the grid, you also need to enable the **Charge From Grid** on the **Advanced Settings** page. Similarly, to feed excess energy to the grid, turn on the **Feed Into Grid**.

### 3.3 Advanced Settings



#### Grid Consumption Settings

- **Charge From Grid:** To enable the EP600 ESS to charge from the grid.
- **Single-phase Grid Max. Input Power:** The maximum power that each phase of the EP600 ESS can draw from the grid.
- **Single-phase Grid Max. Input Current:** The maximum current that each phase of the EP600 ESS can draw from the grid.

#### Feed-to-grid Settings

- **Feed Into Grid:** To enable the EP600 ESS to feed into the grid.
- **Single-phase Grid Max. Discharge Power:** The maximum power that each phase of the EP600 ESS can feed into the grid.
- **Single-phase Grid Max. Discharge Current:** The maximum current that each phase of the EP600 ESS can feed into the grid.

#### Others

- **System Switch Recovery:** To save the system switch status and restore it on restart.
- **Grid Self-adaption:** To provide a stable and continuous grid charging.

## 4. Practices

Before setting the **working mode**, please turn off the **System Switch**.

### 4.1 Charge via Grid

1. Go to the **Advanced Settings** page and turn on the **Charge From Grid**.



2. Set the charging schedule.

a. Tap **Working Mode** on the **Setting** page.

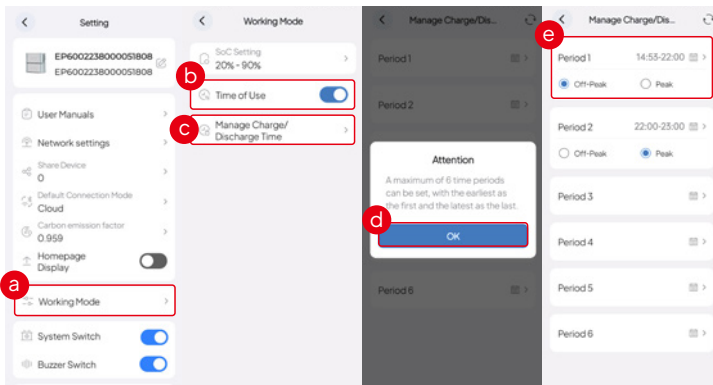
b. Turn on the **Time of Use**.

c. Tap **Manage Charge/Discharge Time**.

d. Select **OK** in the **Attention** pop-up.

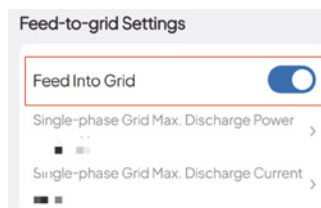
e. Specify a period, and set it as an **Off-Peak** period.

f. On the **Setting** page, after turning on the **System Switch**, it takes 10 seconds to take effect.



### 4.2 Feed to Grid

1. Go to the **Advanced Settings** page and turn on the **Feed to Grid**.



2. Set the schedule.

a. Tap **Working Mode** on the **Setting** page.

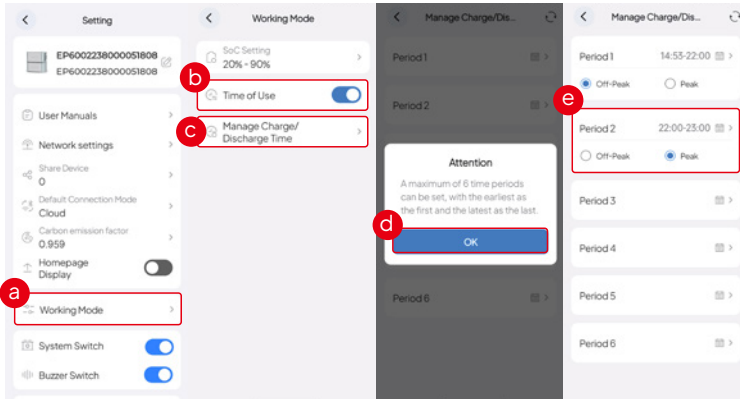
b. Turn on the **Time of Use**.

c. Tap **Manage Charge/Discharge Time**.

d. Select **OK** in the **Attention** pop-up.

e. Specify a period, and set it as a **Peak** period.

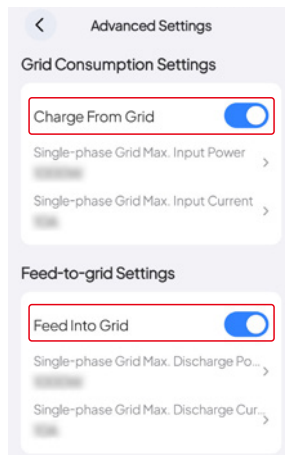
f. On the **Setting** page, after turning on the **System Switch**, it takes 10 seconds to take effect.



### 4.3 Offset Peak-hour Energy Usage

The EP600 ESS features peak-load shifting technology to help you avoid high electricity prices - it stores massive energy during the day or off-peak hours, and supplies it to your house during peak hours.

1. Go to the **Advanced Settings** page and turn on the **Charge From Grid** and **Feed Into Grid**.



2. Schedule EP600 ESS to charge during off-peak hours and discharge during peak hours.

a. Tap **Working Mode** on the **Setting** page.

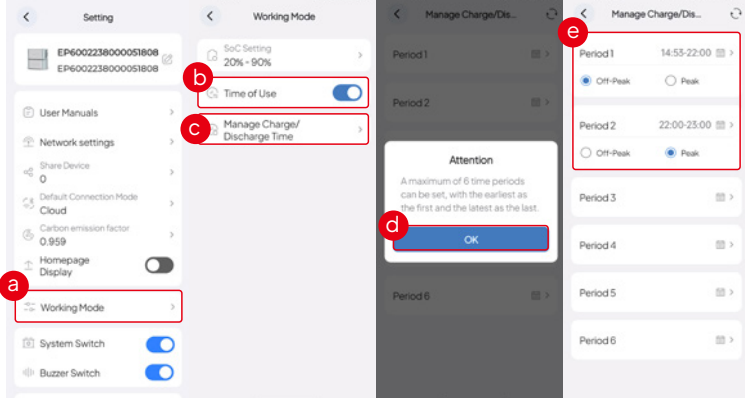
b. Turn on the **Time of Use**.

c. Tap **Manage Charge/Discharge Time**.

d. Select **OK** in the **Attention** pop-up.

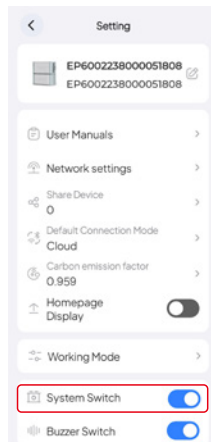
e. Identify the time periods when electricity rates are lower and higher, respectively. Designate the **Off-Peak** periods as those with lower rates. Assign the **Peak** periods to those with higher rates.

f. On the **Setting** page, after turning on the **System Switch**, it takes 10 seconds to take effect.

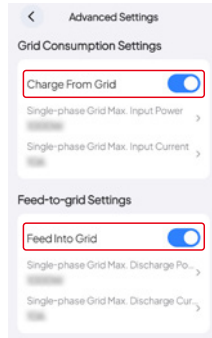


## 4.4 Prioritize PV Charging

Switch on the PV switch of EP600 inverter and check for a successful solar input. Turn on the **System Switch** on the **Setting** page to enable the system to utilize solar energy whenever sunlight is available.



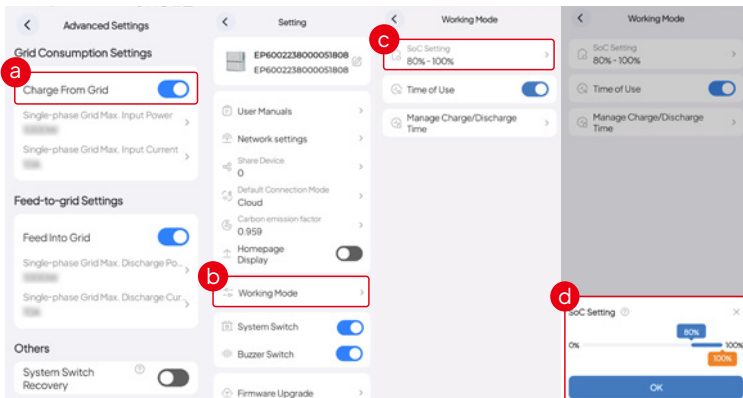
Furthermore, you have the option to decrease your reliance on the power grid by disabling the **Charge From Grid** function located on the **Advanced Settings** page. Simultaneously, if local regulations permit the sale of electricity back to the grid, you can enable the **Feed Into Grid** feature on the same page, which can generate extra income for you.



## 4.5 Backup Power

The EP600 ESS can also be used as a backup power supply for emergencies, especially ideal for areas with unstable grid.

- On the **Advanced Setting** page, turn on **Charge From Grid**.
  - On the **Setting** page, tap **Working Mode**.
  - On the **Working Mode** page, tap **SoC Setting**.
  - Set **SoC Low** value by sliding the blue box.
  - On the **Setting** page, after turning on the **System Switch**, it takes 10 seconds to take effect.
- It is recommended to set the SoC Low value above 80%. When the system is connected to the power grid, it'll stop supplying power to your appliances once the battery level drops below 80%. However, if there is no power grid available, the system will continue to power your appliances until the battery level reaches 0%.



## 4.6 Device Control in Offline Mode

If you haven't registered your EP600 ESS yet, open the App and tap **OFFLINE MODE** to connect directly. Select it (name starts with EP600) from the **Available Devices** list on the **Offline Mode** page.

**Note:** If you can't find your EP600 ESS, get closer and **Click to refresh** the list.

If you've already logged in, tap **Bluetooth** on the **Home** page. Select your EP600 from the **Available Devices** list on the **Bluetooth** page. After a successful connection, you can check and change the settings by consulting the **Device Management pages**.

## 4.7 Device Sharing

1. Log in the App, and connect the device via Bluetooth. Please refer to the **Bluetooth Connection** of *BLUETTI App User Manual* for details.

2. Tap  in the upper right corner of the operation status page.

3. Tap **Share Device**, and the App will jump to the **BLUETTI Share** page.

4. Tap **Yes** to generate a QR code.

**Note:** The generated QR code will be valid for 10 minutes. You can share the EP600 ESS with up to 5 accounts at the same time.



**BLUETTI**



Just Power On