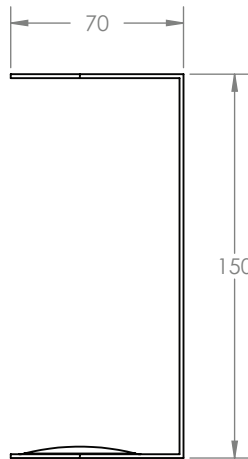
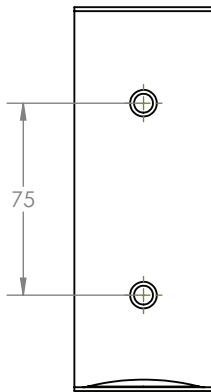
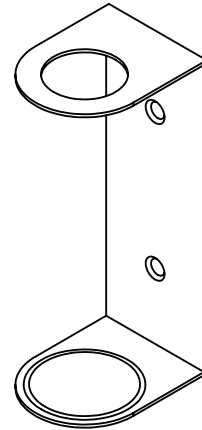
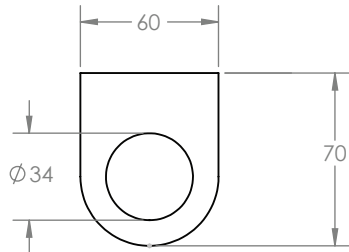


SINGLE SOAP DISPENSER HOLDER



Units in mm

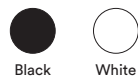
Dimensions:

60mmx70mmx150mm

Material:

Powder-coated stainless steel

Colour:



Feature:

Fits most 500ml pump bottles

Included:

2x Powdercoated Screws, 2x Wall Plugs, 1x 3M Tape Strip

Fixing surface:

Drywall, tiles, concrete, wood

Origin:

Designed in Melbourne