

VICKERS CETOP VALVES



Make	Model
Eaton Vickers	Spool Selection Chart
Eaton Vickers	Standard Coils
Eaton Vickers	Cetop 3 High Performance
Eaton Vickers	Cetop 3 Compact
Eaton Vickers	Cetop 3 Modular Stack
Eaton Vickers	Cetop 3 Manual Control
Eaton Vickers	Cetop 3 Pneumatic Piloted Control
Eaton Vickers	Cetop 5 High Performance
Eaton Vickers	Cetop 5 Modular Stack

VICKERS CETOP VALVES



Cetop Spool Selection Chart

Type A and B Spool		Type C Spool Offsets		Type AL and BL Spool Offsets	
0A		0C		0AL	
2A		2C		2AL	
22A		6C		22AL	
24A		7C		24AL	
0B		22C		0BL	
2B		33C		2BL	
6B		52C		6BL	
7B		56C		7BL	
22B		8C		22BL	
33B				33BL	
521B				52BL	
561B				56BL	
8B				8BL	

NB ▲ Indicates Transient Condition Only

Note: Not all spool options listed above are available ex stock. However, we can order these in on an indent basis. Please contact us for more information.



Standard Coils Quick Reference

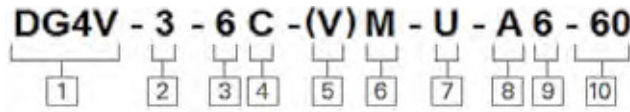


Voltage	Coil Code	DG4V-3 High Performance		DG4V-3C Compact		DG4V-5	
		60 Design		60 Design	†	20 Design	
24VAC	NN	865835		-		458502	
110VAC	A	507825		-		617475	
240VAC	ED	507827		-		617477	
12VDC	G	507847		6039765-001		617470	
24VDC	H	507848		6039764-001		617471	
48VDC	OJ	865882		-		457942	

VICKERS CETOP VALVES



Cetop 3 High Performance Solenoid Valves



1. Model Series
2. High Performance
3. Spool Type
4. Operation Code
 - A - Spring offset (end-end)
 - B - Spring offset (centre-end)
 - C - Spring centred (2 coils)
 - N - no springs, detent (2 coils)
 - L - Left hand build
5. Omit - Solenoid A is on Port B, Solenoid B is on Port A
 - V - Solenoid A is on Port A, Solenoid B is on Port B. Standard on 8C Valve
6. Denotes Solenoid Valve
7. DIN 43650 type wiring
8. Voltage
 - A - 110VAC 50Hz
 - ED - 240VAC 50Hz
 - G - 12VDC
 - H - 24VDC
9. Tank Pressure
 - 6 - 210 bar for AC coils
 - 7 - 210 bar for DC coils
10. Design code

Cetop Size	Max pressure (bar)	Max tank pressure (bar)	Max flow rate (lpm)*	IP rating
3	350	210	80*	65

Din Connectors	
Type	Part Number
Std	OD.01.69.01.000000
LED AC	43650AC
LED DC	43650DC

*Note: Flow rates and pressures drop vary with spool type, flow path, and or coil options. Consult catalogue for more information.

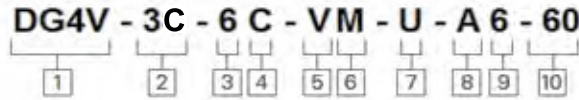
Part Number	Description	Voltage	Coil Part Number	Qty of Coils	Weight (kg)	Schematic
859200	DG4V-3-0A-M-U-A6-60	110VAC	507825	1	1.6	
870092	DG4V-3-0A-M-U-ED6-60	240VAC	507827			
869858	DG4V-3-0A-M-U-G7-60	12VDC	507847			
869575	DG4V-3-0A-M-U-H7-60	24VDC	507848			
859195	DG4V-3-0B-M-U-A6-60	110VAC	507825			
859479	DG4V-3-0B-M-U-ED6-60	240VAC	507827			
859168	DG4V-3-0B-M-U-G7-60	12VDC	507847	2	2.2	
859160	DG4V-3-0B-M-U-H7-60	24VDC	507848			
859197	DG4V-3-0C-M-U-A6-60	110VAC	507825			
859199	DG4V-3-0C-M-U-ED6-60	240VAC	507827			
869576	DG4V-3-0C-M-U-G7-60	12VDC	507847			
859162	DG4V-3-0C-M-U-H7-60	24VDC	507848			
529763	DG4V-3-2A-M-U-A6-60	110VAC	507825	1	1.8	
859171	DG4V-3-2A-M-U-ED6-60	240VAC	507827			
859189	DG4V-3-2A-M-U-G7-60	12VDC	507847			
529762	DG4V-3-2A-M-U-H7-60	24VDC	507848			
859208	DG4V-3-2B-M-U-A6-60	110VAC	507825			
869944	DG4V-3-2B-M-U-ED6-60	240VAC	507827			
859204	DG4V-3-2B-M-U-G7-60	12VDC	507847	2	2.2	
859210	DG4V-3-2B-M-U-H7-60	24VDC	507848			
529761	DG4V-3-2C-M-U-A6-60	110VAC	507825			
859173	DG4V-3-2C-M-U-ED6-60	240VAC	507827			
859212	DG4V-3-2C-M-U-G7-60	12VDC	507847			
529760	DG4V-3-2C-M-U-H7-60	24VDC	507848			
529765	DG4V-3-2N-M-U-A6-60	110VAC	507825	2	2.2	
869939	DG4V-3-2N-M-U-ED6-60	240VAC	507827			
889962	DG4V-3-2N-M-U-G7-60	12VDC	507847			
529764	DG4V-3-2N-M-U-H7-60	24VDC	507848			
859177	DG4V-3-6C-M-U-A6-60	110VAC	507825			
859179	DG4V-3-6C-M-U-ED6-60	240VAC	507827			
859165	DG4V-3-6C-M-U-G7-60	12VDC	507847	2	2.2	
565465	DG4V-3-6C-M-U-H7-60	24VDC	507848			
02-144961	DG4V-3-8C-VM-U-A6-61	110VAC	507825			
02-311543	DG4V-3-8C-VM-U-ED6-61	240VAC	507827			
02-144957	DG4V-3-8C-VM-U-G7-61	12VDC	507847			
02-145162	DG4V-3-8C-VM-U-H7-61	24VDC	507848			

Note: Bolts are sold separately, Part Number: 616452, M5 x 30mm SHCS.

VICKERS CETOP VALVES



Cetop 3 Compact Solenoid Valves



- | | |
|--|---|
| <ol style="list-style-type: none"> 1. Model Series 2. Standard Performance 3. Spool Type 4. Operation Code <ul style="list-style-type: none"> A - Spring offset (end-end) B - Spring offset (centre-end) C - Spring centred (2 coils) N - no springs, detent (2 coils) L - Left hand build 5. Omit - Solenoid A is on Port B, Solenoid B is on Port A <ul style="list-style-type: none"> V - Solenoid A is on Port A, Solenoid B is on Port B. Standard on 8C Valve | <ol style="list-style-type: none"> 6. Denotes Solenoid Valve <ul style="list-style-type: none"> G - 12VDC H - 24VDC 7. DIN 43650 type wiring 8. Voltage 9. Tank Pressure <ul style="list-style-type: none"> 5 - 100 bar 10. Design code |
|--|---|

Cetop Size	Max pressure (bar)	Max tank pressure (bar)	Max flow rate (lpm*)	IP rating
3	350	210	40*	65

Din Connectors	
Type	Part Number
Std	OD.01.69.01.000000
LED AC	43650AC
LED DC	43650DC

*Note: Flow rates and pressures drop vary with spool type, flow path, and or coil options. Consult catalogue for more information.

Part Number	Description	Voltage	Coil Part Number	Qty of Coils	Weight (kg)	Schematic
6040739-001	DG4V-3C-0A-M-U-G5-60	12VDC	6039765-001	1	1.8	
6040347-001	DG4V-3C-0A-M-U-H5-60	24VDC	6039764-001			
6040745-001	DG4V-3C-0B-M-U-G5-60	12VDC	6039765-001	1	1.8	
6047044-001	DG4V-3C-0B-M-U-H5-60	24VDC	6039764-001			
6040743-001	DG4V-3C-0C-M-U-G5-60	12VDC	6039765-001	2	2.2	
6040742-001	DG4V-3C-0C-M-U-H5-60	24VDC	6039764-001			
6040749-001	DG4V-3C-2A-M-U-G5-60	12VDC	6039765-001	1	1.8	
6040748-001	DG4V-3C-2A-M-U-H5-60	24VDC	6039764-001			
6040739-001	DG4V-3C-0A-M-U-G5-60	12VDC	6039765-001	1	1.8	
6040347-001	DG4V-3C-0A-M-U-H5-60	24VDC	6039764-001			
6039701-001	DG4V-3C-2C-M-U-G5-60	12VDC	6039765-001	2	2.2	
6039700-001	DG4V-3C-2C-M-U-H5-60	24VDC	6039764-001			
6040768-001	DG4V-3C-6C-M-U-G5-60	12VDC	6039765-001			
6040348-001	DG4V-3C-6C-M-U-H5-60	24VDC	6039764-001			

Note: Bolts Kits are sold separately, Part Number: 616452, M5 x 30mm SHCS (for single stack valves).

VICKERS CETOP VALVES



Cetop 3 Modular Stack Valves

Control Function	Base Model	Check Direction	Control Flow / Location	Control Range	Adjust Type	Aux. Code	Design Code
Single Relief	DGMC-3	N/A	PT / AT / BT / AB	A / B / C / G	W	(B)	41
Dual Relief	DGMC2-3	N/A	AB / AT	A / B / C / G	W	***W-(B)	41
Counterbalance	DGMR-3	N/A	TA	A / B / C / F	W	(B)	41
Sequence	DGMR1-3	N/A	PP	A / B / C / F	W	(B)	41
Reducing/ Relieving	DGMX2-3	N/A	PP / PA / PB	A / B / C / F	W	B	41
Single Check	DGMDC-3	X / Y	P / T / A / B	K / M / N	N/A	N/A	41
Dual Check	DGMDC-3	Y	A	K / M / N	N/A	BK / M / N	41
Single Pilot Check	DGMPC-3	NO DECOMP	AB / BA	K / M / N	N/A	N/A	41
Double Pilot Check	DGMPC-3	NO DECOMP	AB	K / M / N	N/A	DBAK / M / N	41
Single Flow Regulator	DGMFN-3	X / Y / Z	P / T / A / B	1 / 2	W	N/A	41
Dual Flow Regulator	DGMFN-3	X / Y	A	1 / 2	W	B1 / 2W	41

Check Directions

- X - Meter in (free flow away from actuator)
- Y - Meter out (free flow towards the actuator)
- Z - With out reverse check for DGMFN-3

Control Flow / Location

- The two digit code for relief valves denotes the controlled oil flow from then to for example PT means P to T port
- The two digit code for pilot operated valves denotes the main location and the pilot source for example AB means in Line A but the pilot is coming from B
- A one digit code denotes the control location

Aux. Code

With Dual controls, second function (opposite side) will be coded in the similar manner with 1st function. Single "B" represents gauge port option with G1/4

Adjustment Type

- W - Screw + Locknut (Standard)
- H - Hand knob
- K - Micrometer with key lock

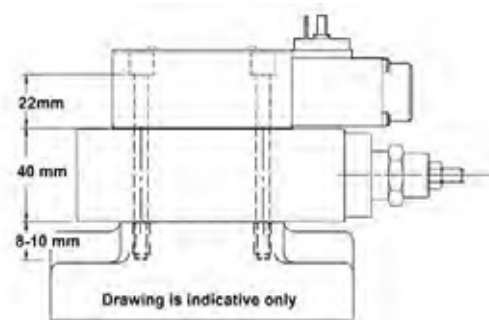
Control Range

Relief (and Dual Relief)	Other Pressure Controls	Check and Pilot Check	Flow Regulator
A - 3 - 50 bar	A - 3 - 30 bar	K - 1 bar	1 - Fine Control (55lpm @ 60 bar)
B - 3 - 100 bar	B - 3.5 - 70 bar	M - 2.5 bar	2 - Standard control (55lpm @ 13 bar)
C - 10 - 200 bar	C - 10 - 140 bar	N - 5 bar	
G - 50 - 315 bar	F - 20 - 250 bar		

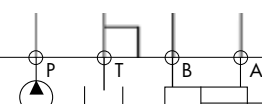
Bolt Kits / Stud Kits

No. of Modular Stack Valves	Bolt / Stud Length (mm)	Part Number
1	70	464125
2	110	466840
3	150	466844

Notes: Each Modular Stack Valve is 40mm high
Cetop 3 Valve depth = 22mm
Subplate thread engagement 8 - 10 mm



Part Number	Description	Function	Plate Thickness (mm)	Max Pressure (bar)	Aux. Code
466385	DGMA-3-B-10	Blanking Plate	10	315	
466386	DGMA-3-C1-10	Cross over plate P to A, B to T	10	315	
466387	DGMA-3-C2-10	Cross over plate P to B, A to T	10	315	
400733	DGAM-3-01-10R	Adaptor Plate, Cetop 3 (top) to Cetop 5	21 (onto Cetop 5)	210	

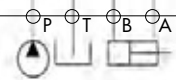


VICKERS CETOP VALVES



Cetop 3 Modular Stack Valves

Part Number	Description	Function		Height (mm)
869640	DGMC-3-PT-BW-41	Single Relief		40
694419	DGMC-3-PT-CW-41			
869641	DGMC-3-PT-GW-41			
02-108716	DGMC-3-AT-GW-41			40
869627	DGMC2-3-AB-BW-BA-BW-41	Dual Relief		40
869628	DGMC2-3-AB-CW-BA-CW-41			
871708	DGMC2-3-AB-GW-BA-GW-41			
870074	DGMC2-3-AT-CW-BT-CW-4			40
694415	DGMDC-3-Y-PK-41	Single Check		40
694416	DGMDC-3-X-TK-4			40
870024	DGMPC-3-ABK-41	Single Pilot Check		40
870023	DGMPC-3-BAK-40			40
694400	DGMPC-3-ABK-BAK-41	Dual Pilot Check		40
870041	DGMFN-3-ZP1W-41	Single Flow Control		40
870043	DGMFN-3-ZP2W-41			
870042	DGMFN-3-ZT1W-41			40
02-108917	DGMFN-3-X-A2W-41	Single Flow Control with Reverse Check		40
694413	DGMFN-3-X-A1W-B1W-41	Dual Flow Control with Reverse Check		40
694414	DGMFN-3-X-A2W-B2W-41			
694411	DGMFN-3-Y-A1W-B1W-41			40
694412	DGMFN-3-Y-A2W-B2W-41			
870031	DGMX2-3-PA-BW-B-40	Reducing / Relieving Valves		40
870033	DGMX2-3-PA-FW-B-40			
870267	DGMX2-3-PB-CW-B-40			40
870021	DGMX2-3-PP-AW-B-40			40
870036	DGMX2-3-PP-BW-B-40			
870037	DGMX2-3-PP-CW-B-40			
870038	DGMX2-3-PP-FW-B-40			

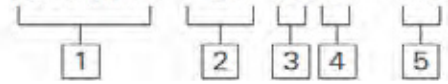


VICKERS CETOP VALVES



Cetop 3 Manual Control Valves

DG17V - 3 - 2 C - 60



- | | |
|-------------------------|---------------------|
| 1 - Manual Control | 4 - A Spring Offset |
| 2 - Cetop 3 | - C Spring Centred |
| 3 - Spool Configuration | - N Detented |
| | 5 - Design Code |

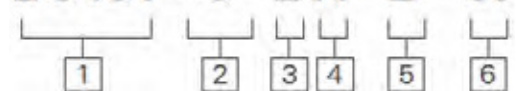
Cetop Size	Max pressure (bar)	Max tank pressure (bar)	Max flow rate (lpm)*
3	350	100	75*

Part Number	Description	Weight (kg)	Schematic
02-127342	DG17V-3-2A-60	1.8	
02-127343	DG17V-3-2C-60		
02-127344	DG17V-3-2N-60		
02-135316	DG17V-3-6C-60		
02-135673	DG17V-3-6N-60		

*Note: Flow rates and pressures drop vary with spool type, flow path, and or coil options.

VICKERS Cetop 3 Pneumatic Piloted Control Valves

DG18V - 3 - 2 A - B - 60



- | | |
|-------------------------|--------------------------|
| 1 - Pneumatic Piloted | 4 - A Spring Offset |
| 2 - Cetop 3 | - C Spring Centred |
| 3 - Spool Configuration | 5 - B G1/8 Pilot Port(s) |
| | 6 - Design Code |

Cetop Size	Max pressure (bar)	Max tank pressure (bar)	Max flow rate (lpm)*
3	350	100	26-76*



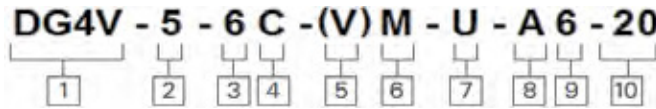
Part Number	Description	Weight (kg)	Schematic
02-145115	DG18V-3-0C-B-60	1.5	
02-145116	DG18V-3-2A-B-60	1.2	
02-149004	DG18V-3-2C-B-60	1.5	
02-149005	DG18V-3-6C-B-60		

*Note: Flow rates and pressures drop vary with spool type, flow path, and or coil options.

VICKERS CETOP VALVES



Cetop 5 High Performance Solenoid Valves



- | | |
|--|--|
| <ol style="list-style-type: none"> 1. Model Series 2. Standard Performance 3. Spool Type 4. Operation Code <ul style="list-style-type: none"> A - Spring offset (end-end) B - Spring offset (centre-end) C - Spring centred (2 coils) N - no springs, detent (2 coils) L - Left hand build 5. Omit - Solenoid A is on Port B, Solenoid B is on Port A
V - Solenoid A is on Port A, Solenoid B is on Port B. Standard on 8C Valve 6. Denotes Solenoid Valve | <ol style="list-style-type: none"> 7. DIN 43650 type wiring 8. Voltage <ul style="list-style-type: none"> A - 110VAC 50Hz ED - 240VAC 50Hz G - 12VDC H - 24VDC 9. Tank Pressure <ul style="list-style-type: none"> 6 - 160 bar with DC Coils - 120 bar with AC Coils 10. Design code |
|--|--|

Cetop Size	Max pressure (bar)	Max tank pressure (bar)	Max flow rate (lpm)*	IP rating
5	315	160**	120	65

Din Connectors	
Type	Part Number
Std	OD.01.69.01.000000
LED AC	43650AC
LED DC	43650DC

*Note: Flow rates and pressures drop vary with spool type, flow path, and or coil options. Consult catalogue for more information.

**Note: 160 Bar for DC coils, 120 Bar for AC Coils.

Part Number	Description	Voltage	Coil Part Number	Qty of Coils	Weight (kg)	Schematic
616946	DG4V-5-0A-M-U-A6-20	110VAC	617475	1	4.2	
720421	DG4V-5-0A-M-U-ED6-20	240VAC	617477			
616957	DG4V-5-0A-M-U-G6-20	12VDC	617470			
616956	DG4V-5-0A-M-U-H6-20	24VDC	617471			
459215	DG4V-5-0B-J-M-U-A6-20	110VAC	617475			
991271	DG4V-5-0B-M-U-ED6-20	240VAC	617477			
639598	DG4V-5-0B-J-M-U-G6-20	12VDC	617470	2	6.3	
459788	DG4V-5-0B-J-M-U-H6-20	24VDC	617471			
616789	DG4V-5-0C-M-U-A6-20	110VAC	617475			
991201	DG4V-5-0C-M-U-ED6-20	240VAC	617477			
616790	DG4V-5-0C-J-M-U-G6-20	12VDC	617470	1	4.2	
02-333617	DG4V-5-0C-J-M-U-H6-20	24VDC	617471			
616769	DG4V-5-2A-M-U-A6-20	110VAC	617475			
991270	DG4V-5-2A-M-U-ED6-20	240VAC	617477			
616770	DG4V-5-2A-J-M-U-G6-20	12VDC	617470			
02-333582	DG4V-5-2A-J-M-U-H6-20	24VDC	617471			
616941	DG4V-5-2B-M-U-A6-20	110VAC	617475	2	6.3	
992690	DG4V-5-2B-M-U-ED6-20	240VAC	617477			
639749	DG4V-5-2B-M-U-G6-20	12VDC	617470			
638972	DG4V-5-2B-J-M-U-H6-20	24VDC	617471			
616777	DG4V-5-2C-M-U-A6-20	110VAC	617475			
639610	DG4V-5-2C-M-U-ED6-20	240VAC	617477			
616778	DG4V-5-2C-J-M-U-G6-20	12VDC	617470	1	4.2	
02-333579	DG4V-5-2C-J-M-U-H6-20	24VDC	617471			
616773	DG4V-5-2N-M-U-A6-20	110VAC	617475			
991272	DG4V-5-2N-M-U-ED6-20	240VAC	617477			
616774	DG4V-5-2N-J-M-U-G6-20	12VDC	617470			
616772	DG4V-5-2N-J-M-U-H6-20	24VDC	617471			
616781	DG4V-5-6C-M-U-A6-20	110VAC	617475	2	6.3	
639609	DG4V-5-6C-M-U-ED6-20	240VAC	617477			
616782	DG4V-5-6C-J-M-U-G6-20	12VDC	617470			
02-333580	DG4V-5-6C-J-M-U-H6-20	24VDC	617471			
616785	DG4V-5-8C-J-VM-U-A6-20	110VAC	617475			
991249	DG4V-5-8C-J-VM-U-ED6-20	240VAC	617477			
616786	DG4V-5-8C-J-VM-U-G6-20	12VDC	617470	1	4.2	
02-333581	DG4V-5-8C-J-VM-U-H6-20	24VDC	617471			

Note: Bolts Kits are sold separately, Part Number 466310, M6 x 40mm SHCS (for single stack valves).

VICKERS CETOP VALVES



Cetop 5 Modular Stack Valves

Control Function	Base Model	Check Direction	Control Flow / Location	Control Range	Adjust Type	Aux. Code	Design Code
Single Relief	DGMC-5	N/A	PT / AT / BT	A / B / F / G	H / W	(B)	30
Dual Relief	DGMC2-5	N/A	AB / AT	A / B / F / G	H / W	***W-(B)	30
Counterbalance	DGMR-5	N/A	A	1 - F	W		30
Sequence	DGMR1-5	N/A	PP	A / B / F / G	W	B	30
Reducing/ Relieving	DGMX2-5	N/A	PP / PA / PB	A / B / F / G	H / W	B	30
Single Check	DGMDC-5	X / Y	P / T / A / B	K / M / N	N/A		30
Dual Check	DGMDC-5	X / Y	A	K / M / N	N/A	BK / M / N	30
Single Pilot Check	DGMPC-5	NO DECOMP	AB / BA	K / M / N	N/A		30
Double Pilot Check	DGMPC-5	NO DECOMP	AB	K / M / N	N/A	BAK / M / N	30
Double Pilot Check	DGMPC-5	D	AB	K / M / N	N/A	DBAK / M / N	30
Single Flow Regulator	DGMFN-5	X / Y	P / A / B	1 / 2	W		30
Dual Flow Regulator	DGMFN-5	X / Y	A	1 / 2	W	B2W	30

Check Direction

- X - Meter in (free flow away from actuator)
- Y - Meter out (free flow towards the actuator)

Control Flow / Location

- The two digit code for relief valves denotes the controlled oil flow from then to for example PT means P to T port
- The two digit code for pilot operated valves denotes the main location and the pilot source for example AB means in Line A but the pilot is coming from B
- A one digit code denotes the control location

Aux. Code

With dual controls, second function (opposite side) will be coded in the similar manner with 1st function. Single "B" represents gauge port option with G1/4

Adjustment Type

- W - Screw + Locknut (Standard)
- H - Hand knob
- K - Micrometer with key lock

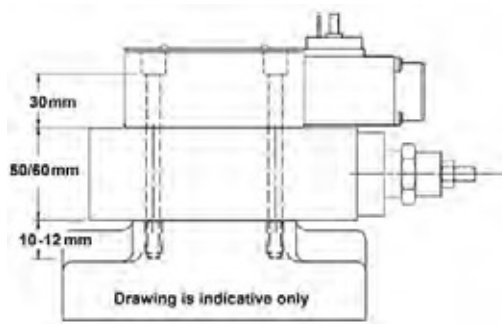
Control Range

Relief (and Dual Relief)	Other Pressure Controls	Check and Pilot Check	Flow Regulator	Counterbalance
A - 4 - 50 bar	A - up to 50 bar	K - 1 bar	1 - Fine Control (120lpm @ 60 bar)	1 - 4:1 Pilot ratio
B - 4 - 100 bar	B - up to 100 bar	M - 2.5 bar	2 - Standard control (120lpm @ 10 bar)	2 - 10:1 Pilot ratio
C - 4 - 200 bar	F - up to 200 bar	N - 5 bar		
G - 4 - 315 bar	G - up to 315 bar			

Bolt Kits / Stud Kits

No. of Modular Stack Valves	Bolt / Stud Length (mm)	Part Number
1 (50mm)	90	534576
1 (60mm)	110	978480
2 (50mm)	140	638878
3 (50mm)	188	978460

Notes: Most Cetop 5 Modular Stack valves are 50 or 60mm in height
Cetop 5 Valve Height = 30mm
Subplate thread engagement 12 mm



Part Number	Description	Function	Plate Thickness (mm)	Max Pressure (bar)	Aux. Code
978451	DGMA-5-B-10	Blanking Plate	37	315	
978452	DGMA-5-C1-10	Cross over plate P to A, B to T	37	315	
978453	DGMA-5-C2-10	Cross over plate P to B, A to T	37	315	
400733	DGAM-3-01-10R	Adaptor Plate, Cetop 3 (top) to Cetop 5	21 (onto Cetop 5)	210	



VICKERS CETOP VALVES



Cetop 5 Modular Stack Valves

Part Number	Description	Function	Height (mm)
879035	DGMC-5-PT-BH-B-30	Single Relief	60
879036	DGMC-5-PT-GH-B-30		
879044	DGMC2-5-AB-GH-BA-GH-30	Dual Relief	60
867341	DGMwDC-5-Y-PK-30	Single Check	50
867342	DGMDC-5-X-TK-30		
867339	DGMPC-5-ABK-30	Single Pilot Check	50
867340	DGMPC-5-BAK-30		
867364	DGMPC-5-ABK-BAK-30	Dual Pilot Check	50
867335	DGMFN-5-X-A2W-B2W-30	Dual Flow Control with Reverse Check	50
867332	DGMFN-5-Y-A2W-B2W-30		
879050	DGMX2-5-PA-GH-B-30	Reducing / Relieving Valves	50
879045	DGMX2-5-PP-BH-B-30		
02-140896	DGMX2-5-PP-FH-B-30		
879046	DGMX2-5-PP-GH-B-30		

