

# Jockey Grinder



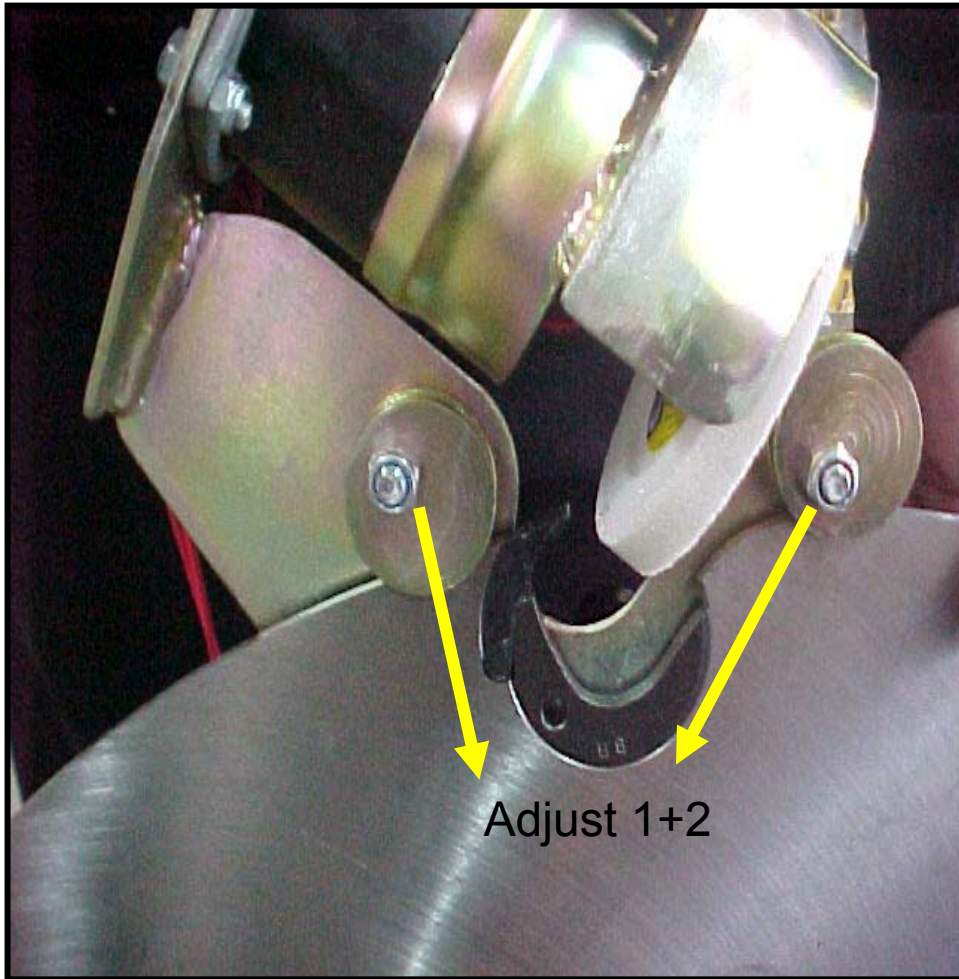
- Portable hand held Sharpening Device.
- 12 VOLT
- Durable for tough bush conditions.

# Jockey Grinder



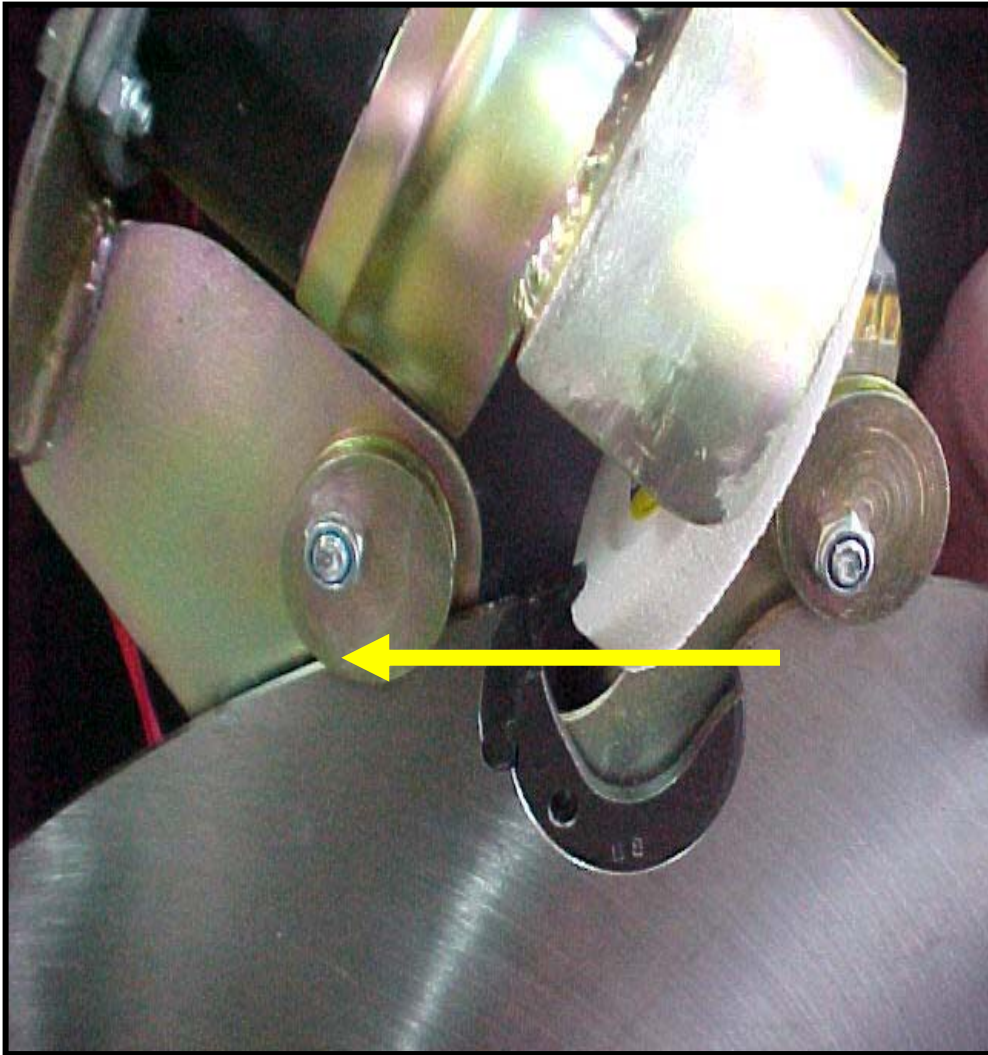
- Trigger button in handle for operating ease.
- Tough light weight steel components
- Operator able to sharpen saws while still on mill.
- Roller design to maintain correct face angle.
- Utilizes battery already fitted to most portable Sawmills.

# Jockey Grinder



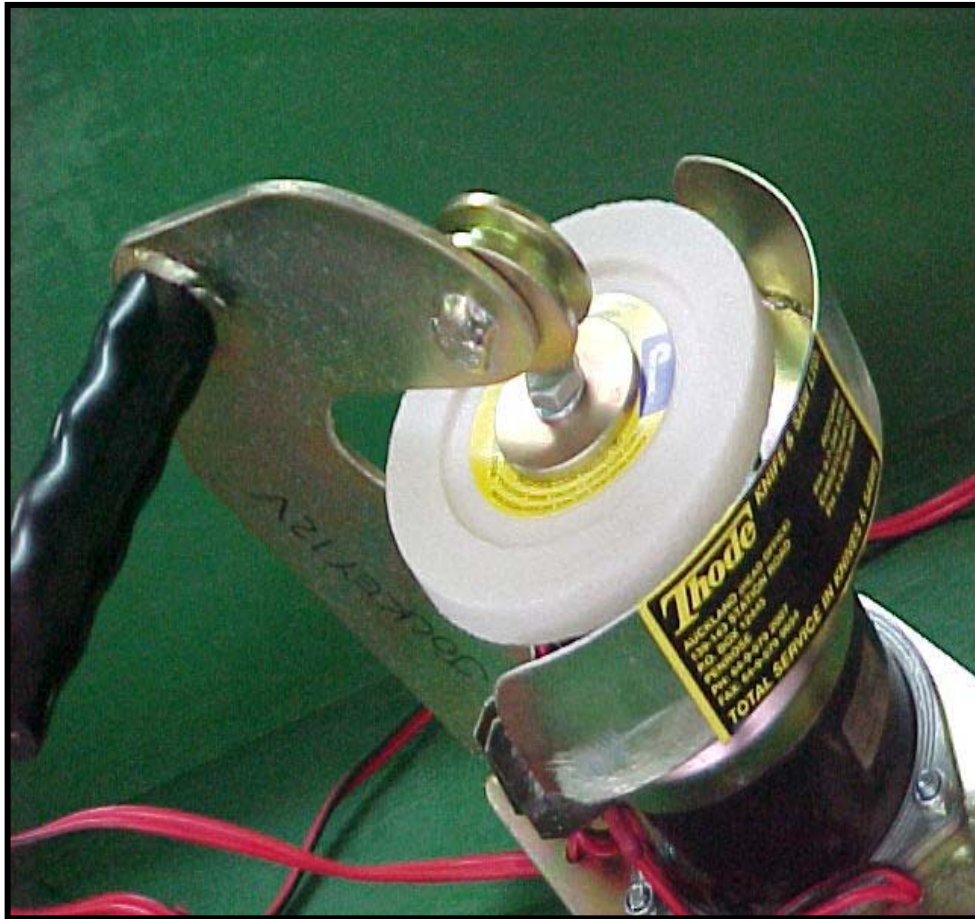
- Adjust grinding wheel to correct height and face angle by loosening Nut 1 & 2 and adjusting rolls to correct position.

# Jockey Grinder



- When required adjustment is set, roll grinding wheel onto face of tooth. This setting will be same for all teeth on saw.

# Jockey Grinder Wheels



- Wheels available for Stellite, High Speed Steel & Tungsten Carbide.
- **100mm dia x 13mm x 12.7mm id**
- CG4561 – WA46LV71A
- CG4562 – WA60KV12A
- CG4563 – WA80KV7A
- D4A2/J – Diamond Wheel for TCT

# Portable Mill Equipment & Service

Thode Knife & Saw Ltd



- New Insert tooth saws
- Special Stellite and Tungsten tipped saws.
- Replacement Insert teeth & Shanks.
- Insert Saw Wrenches.
- Grinding wheels & Dressing Sticks
- Saw Blade Lubricants.
- **Professional Saw Doctor** back up on all sawing applications.
- Leveling and tensioning of saws.
- Sharpening of all saws