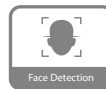


DH-IPC-HFW5541T-SE

5MP Pro AI IR Bullet Network Camera



- 1/2.7" 5Megapixel progressive scan CMOS
- H.265 & H.264 triple-stream encoding
- 20 fps@2592 × 1944, 50/60 fps@1080P (1920 × 1080)
- WDR (120 dB), Day/Night (ICR), 3D DNR, AWB, AGC, BLC
- Multiple network monitoring: Web viewer, CMS (DSS/PSS) & DMSS
- 2.8 mm fixed lens (3.6 mm, 6.0 mm, 8.0 mm, 12.0 mm optional)
- Max. IR LEDs Length 80 m
- Micro SD memory, IP67, IK10



System Overview

Pro AI series contains Face Detection, Perimeter Protection and People Counting functions. Powered by deep-learning Artificial Intelligence algorithms, significantly improved accuracy. Active Deterrence and Full Color camera are also in this series. Meanwhile, the series features starlight and smart IR technology. This series fully protected from dust and water, certified to IP67 standard.

Functions

Face Detection

Face Detection is a software application that automatically captures faces from within a digital image or a video frame from a video source. Dahua cameras use advanced deep learning algorithms and are trained by a large number of face data sources, enabling the camera to locate faces quickly and accurately from the video source and capture facial images.

Perimeter Protection

Dahua's Perimeter Protection functions significantly improved accuracy. Perimeter Protection reduces false alarms and decreases pixel count requirements for object detection. Perimeter Protection features custom tripwires based on object type for automation in limited access areas such as pedestrian or vehicle-only zones. This combination of advanced AI analytics and real-time alerts to a desktop or to a mobile client reduces system requirements and resources resulting in greater surveillance system efficiency.

People Counting

People Counting function uses advanced image processing technology to capture depth information from within images. The camera pairs this information with deep learning algorithms to analyze and detect human bodies and track target objects in real time. The camera provides statistics for separate individuals' entrance and exit with up to 95% counting accuracy.

Protection (IP67, IK10, wide voltage)

The camera allows for $\pm 30\%$ input voltage tolerance, suitable for the most unstable conditions for outdoor applications. Its 6KV lightning rating provides effective protection for both the camera and its structure against lightning. Subjected and certified to rigorous dust and immersion tests (IP67) and impact tests (IK10), the camera is the choice for installation in even the most unforgiving environments.

ePoE technology

The ePoE technology of Dahua, designed internally, adopts advanced 2D-PAM3 coding modulation from physical layer, and realizes full duplex transmission over 800 meters at the speed of 10Mbps, or 300 meters at the speed of 100Mbps via Cat 5 or coaxial cable media. Besides, it supports PoE and PoC power supply technology which has greatly simplified construction and wiring. Dahua ePoE technology offer a new way to accomplish long distance transmission between IP camera and network switch. It allows more flexible surveillance system design, improves reliability and saves construction and wiring cost.

Technical Specification

Camera

Image Sensor	1/2.7" 5Megapixel progressive scan CMOS
Effective Pixels	2592 (H) × 1944 (V)
RAM/ROM	512 MB/128 MB
Scanning System	Progressive
Electronic Shutter Speed	Auto/Manual, 1/3 s–1/100000 s
Minimum Illumination	0.005 Lux@F1.6
IR Distance	Distance up to 80 m (262 ft)
IR On/Off Control	Auto/Manual
IR LEDs	4

Lens

Lens Type	Fixed-focal																														
Mount Type	Board-in																														
Focal Length	2.8 mm, 3.6 mm, 6.0 mm, 8.0 mm, 12.0 mm																														
Max. Aperture	F1.6 (2.8 mm–8.0 mm), F2.0 (12.0 mm)																														
Angle of View	H: 102°, V: 71°/H: 84°, V: 58°/H: 51°, V: 37°/ H: 38°, V: 28°/H: 25°, V: 18°																														
Aperture Type	Fixed																														
Close Focus Distance	0.9 m (2.95 ft)/1.6 m (5.25 ft)/3.1 m (10.17 ft)/4.5 m (14.73 ft)/10.3 m (33.79 ft)																														
DORI Distance	<table border="1"> <thead> <tr> <th>Lens</th> <th>Detect</th> <th>Observe</th> <th>Recognize</th> <th>Identify</th> </tr> </thead> <tbody> <tr> <td>2.8mm</td> <td>56m(184ft)</td> <td>22m(72ft)</td> <td>11m(36ft)</td> <td>6m(20ft)</td> </tr> <tr> <td>3.6mm</td> <td>80m(262ft)</td> <td>32m(105ft)</td> <td>16m(52ft)</td> <td>8m(26ft)</td> </tr> <tr> <td>6mm</td> <td>120m(394ft)</td> <td>48m(157ft)</td> <td>24m(79ft)</td> <td>12m(39ft)</td> </tr> <tr> <td>8mm</td> <td>160m(525ft)</td> <td>64m(210ft)</td> <td>32m(105ft)</td> <td>16m(52ft)</td> </tr> <tr> <td>12mm</td> <td>240m(787ft)</td> <td>96m(315ft)</td> <td>48m(157ft)</td> <td>24m(79ft)</td> </tr> </tbody> </table>	Lens	Detect	Observe	Recognize	Identify	2.8mm	56m(184ft)	22m(72ft)	11m(36ft)	6m(20ft)	3.6mm	80m(262ft)	32m(105ft)	16m(52ft)	8m(26ft)	6mm	120m(394ft)	48m(157ft)	24m(79ft)	12m(39ft)	8mm	160m(525ft)	64m(210ft)	32m(105ft)	16m(52ft)	12mm	240m(787ft)	96m(315ft)	48m(157ft)	24m(79ft)
	Lens	Detect	Observe	Recognize	Identify																										
	2.8mm	56m(184ft)	22m(72ft)	11m(36ft)	6m(20ft)																										
	3.6mm	80m(262ft)	32m(105ft)	16m(52ft)	8m(26ft)																										
	6mm	120m(394ft)	48m(157ft)	24m(79ft)	12m(39ft)																										
8mm	160m(525ft)	64m(210ft)	32m(105ft)	16m(52ft)																											
12mm	240m(787ft)	96m(315ft)	48m(157ft)	24m(79ft)																											

Pan/Tilt/Rotation

Pan/Tilt/Rotation Range	Pan: 0°–360°; Tilt: 0°–90°; Rotation: 0°–360°
-------------------------	---

Artificial Intelligence

Face Detection	Support face image capture
Perimeter Protection	Tripwire, intrusion (Recognition of vehicle and people), fast moving, loitering detection, parking detection and people gathering
People Counting	Support Line crossing/Region/Queueing people counting; Support 4 accesses independent detection, 4 areas independent detection

General Intelligence

Event Trigger	Motion detection, Video tampering, Scene changing, Network disconnection, IP address conflict, Illegal Access, Storage anomaly
General Intelligence	Object Abandoned/Missing
Heat Map	Yes

Video

Compression	H.265, H.264, H.264B, H.264H, MJPEG (sub stream)
Smart Codec	Yes
Streaming Capability	3 Streams
Resolution	2592 × 1944/2688 × 1520/2560 × 1440/2304 × 1296/1080P (1920 × 1080)/1.3M (1280 × 960)/720P (1280 × 720)/D1 (704 × 576/704 × 480)/VGA (640 × 480)/CIF (352 × 288/352 × 240)
Frame Rate	Main Stream: 2592 × 1944 (1 fps–20 fps) 2560 × 1440 (1 fps–25/30 fps) 1920 × 1080 (1 fps–50/60 fps)
	Sub Stream: D1 (1 fps–20/30 fps) D1 (1 fps–50 fps)
	Third Stream: 1080P (1 fps–17 fps)
Bit Rate Control	CBR/VBR
Bit Rate	H.264: 32 Kbps–8192 Kbps H.265: 19 Kbps–8192 Kbps
Day/Night	Auto(ICR)/Color/B/W
BLC Mode	BLC/HLC/WDR (120 dB)
White Balance	Auto/Natural/Street Lamp/Outdoor/Manual
Gain Control	Auto/Manual
Noise Reduction	3D DNR
Motion Detection	Off/On (4 Zone, Rectangle)
Region of Interest	Off/On (4 Zone)
Electronic Image Stabilization (EIS)	N/A
Smart IR	Yes
Defog	Yes
Flip	0°/90°/180°/270°
Mirror	Off/On
Privacy Masking	Off/On (4 Area, Rectangle)

Audio

Compression	N/A
-------------	-----

Network

Ethernet	RJ-45 (10/100 Base-T)
Protocol	IPv4;IPv6;HTTP;HTTPS;TCP;UDP;ARP;RTP;RTSP;RTCP;RTMP;SMTP;FTP;SFTP;DHCP;DNS;DDNS;QoS;UPnP;NTP;Multicast;ICMP;IGMP;NFS;PPPoE;802.1x;SNMP
Interoperability	ONVIF (Profile S/Profile G/Profile T), CGI, Milestone, Genetec, P2P
Streaming Method	Unicast/Multicast
Max. User Access	20 Users
Edge Storage	NAS;FTP;SFTP Micro SD card 256 GB
Web Viewer	IE (versions newer than IE8), Chrome, Firefox, Safari (versions newer than Safari 12)
Management Software	Smart PSS, DSS, DMSS
Smart Phone	iOS, Android

Certifications

Certifications	CE-LVD: EN60950-1 CE-EMC: Electromagnetic Compatibility Directive 2014/30/EU FCC: 47 CFR FCC Part 15, Subpart B UL/CUL: UL60950-1 CAN/CSA C22.2 No.60950-1-07
----------------	--

Interface

Audio Interface	N/A
RS485	N/A
Alarm	N/A

Electrical

Power Supply	DC 12V (±30%), PoE (802.3af) (Class 0)
Power Consumption	<8.4W

Environmental

Operating Conditions	-30° C to +60° C (-22° F to +140° F)/Less than 95% RH
Storage Conditions	-30° C to +60° C (-22° F to +140° F)
Ingress Protection	IP67
Vandal Resistance	IK10

Construction

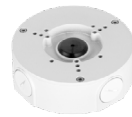
Casing	Metal
Dimensions	244.1 mm × 79.0 mm × 75.9 mm (9.61" × 3.11" × 2.99")
Net Weight	0.815 kg (1.80 lb)
Gross Weight	1.08 kg (2.38 lb)

Ordering Information

Type	Part Number	Description
5MP camera	DH-IPC-HFW5541TP-SE	5MP Pro AI IR Bullet Network Camera, WDR, PAL
	DH-IPC-HFW5541TN-SE	5MP Pro AI IR Bullet Network Camera, WDR, NTSC
	IPC-HFW5541TP-SE	5MP Pro AI IR Bullet Network Camera, WDR, PAL
	IPC-HFW5541TN-SE	5MP Pro AI IR Bullet Network Camera, WDR, NTSC
Accessories (optional)	PFA130-E	Junction Box
	PFA152-E	Pole Mount
	PFA151	Corner Mount

Accessories

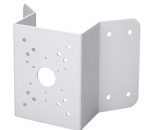
Optional:



PFA130-E
Junction box



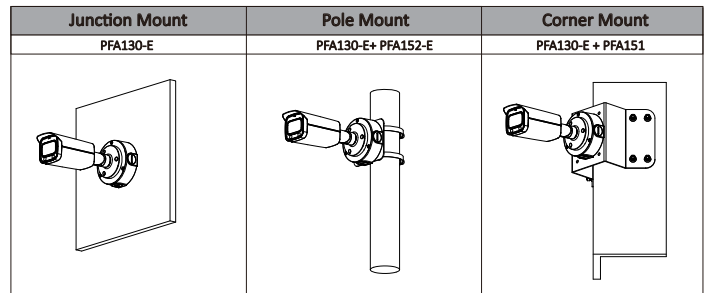
PFA152-E
Pole Mount



PFA151
Corner Mount



LR1002
ePoE Over Coax
Converter



Dimensions (mm[inch])

