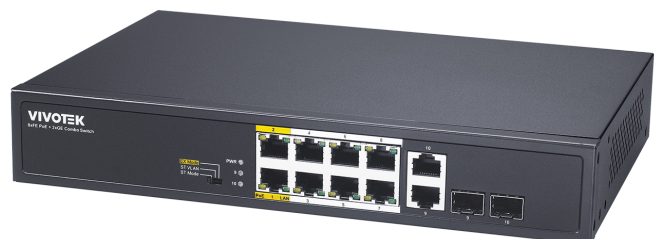


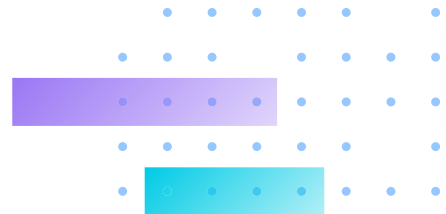
AW-FGT-100D-120

Unmanaged 8xFE PoE + 2xGE Combo Switch

Extend PoE up to 250m • Surge Protection 6KV

- 15.4W/30W 802.3af/802.3at Compliant
- 6KV PoE Surge Protection each Port
- 4KV AC Surge Protection
- 20% Range of Input Voltage Tolerance (280VAC 4hrs, 300VAC 1 min)
- Circuit Protection Prevents Power Interference between Ports
- Detects PoE PD (Power Device) Automatically
- ST Mode Reaches PoE Camera up to 100M@100Mbps via any Port
- EX Mode Reaches 802.3af/at Camera up to 250m@10Mbps via EX PoE Ports



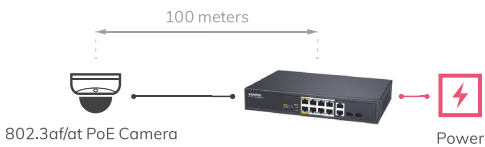


Overview

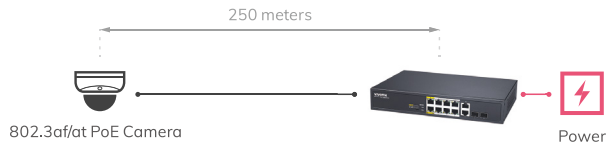
The AW-FGT-100D-120 quipped with DIP switch provides EX mode, ST VLAN, and ST mode. Especially designed for IP Surveillance applications, the camera provides standard 802.3af/at PoE functions in ST mode, while EX mode transmits data & power on one single cable up to 250 meters via EX ports for long-reach PoE IP cameras. The Commercial series adds an extra 20% range of input voltage tolerance(280VAC 4hrs, 300VAC 1 min), lightning surge protection of AC power & PoE surge protection to prevent the damage caused by outside unstable AC power, lightning surge, and power spikes. These unique features reduce costs associated with the replacement of damaged units.

Application

- ST Mode

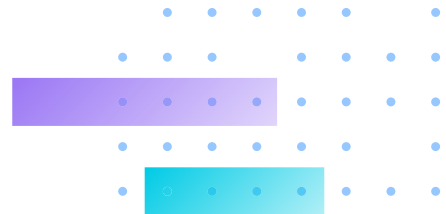


- EX Mode




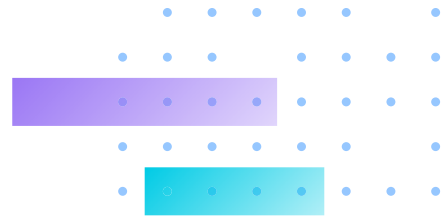
Range Guide	802.3af/at PoE Camera
Any Port @ ST Mode	100M @ 100Mbps
EX Port @ EX Mode	250M @ 10Mbps

*EX Mode: Cat.6 or better UTP/STP cable is highly recommended. Low quality cables will seriously limit the cabling distance.



Technical Specifications

Model	 AW-FGT-100D-120
Short Highlight	8xFE PoE + 2xGE Combo
Networking Specifications	
10/100 Mbps RJ45 PoE Port	8
Gigabit RJ45/SFP Combo Ports	2
EX Mode PoE Ports (250M@10Mbps)	2
Ethernet Performance	
Switching Bandwidth	5.6 Gbps
Mac Table	4 K
Jumbo Frame	1,536 Bytes
Auto-MDI/MDI-X, Auto-Negotiation	Supported
Power Specifications	
Power Input Voltage	100V ~ 240VAC
Max. PoE Output Power	Per Port 54VDC, Max. 30W
Total PoE Power Budget	115W
Power Consumption	120W
IEEE 802.3af/at	Supported
Power Pin Assignment	1/2(+), 3/6(-)
PoE PD Auto Detection	Supported
Surge Protection/Each PoE Port	6KV
Surge Protection for AC Power	4KV
General	
Operating Temperature	0°C ~ 50°C (32°F ~ 122°F)
Storage Temperature	-20°C ~ 70°C (-4°F ~ 158°F)
Operating Humidity	10% ~ 90% non-condensing
Dimensions	270 (L) x 181 (W) x 44 (H) mm
Weight	1.54 kg
Warranty	24 months
Certifications	
EMC	CE, FCC, VCCI
Safety	LVD EN62368-1



Dimensions

