

Konec Smart Curtain Motor User Manual



Model: KOK-AM50-1.2/100-EM-P-Z

If the supply cord is damaged, it must be replaced by the manufacturer or its service agent or a similarly qualified person in order to avoid a hazard.

This appliance is not intended for use by persons (including children) with reduced physical, sensory or mental capabilities, or lack of experience and knowledge, unless they have been given supervision or instruction concerning use of the appliances by a person responsible for their safety.

Children should be supervised to ensure that they do not play with the appliance. This product must not be disposed together with the domestic waste. This product has to be disposed at an authorized place for recycling of electrical and electronic appliance.

By collecting and recycling waste, you help save natural resources, and make sure the product is disposed in an environment friendly and healthy way.

WARNING: Important safety instructions. It is important for the safety of persons to follow these instructions. Save these instructions.

Do not allow children to play with fixed controls. Keep remote controls away from children "

Frequently examine the installation for imbalance and signs of wear or damage to cables and springs. Do not use if repair or adjustment is necessary "

WARNING: Important safety instructions. Follow all instructions, since incorrect installation can lead to severe injury "

Before installing the drive, remove any unnecessary cords and disable any equipment not needed for powered operation "

Install the actuating member of a manual release at a height less than 1.8 m

The drive rail is intended to be installed at the height of at least 2.5m above the floor level or other access level.

Watch the moving shutter and keep people away until the shutter is completely closed;

Care should be taken when operating the manual release since an open shutter may fall rapidly due to weak or broken springs.

This product must not be disposed together with the domestic waste. This product has to be disposed at an authorized place for recycling of electrical and electronic appliance.



KOK-AM50-1.2/100-EM-P-Z

Features

- AC100-240V, widen voltage input for different voltage power area
- When the electricity off, it can be manual operated
- Light touch to start the motor by softly drag the curtain fabric, it will open curtain automatically APP bi-communication, eedback status at any time
- High-precision drive, leading intelligent design, beside, slow close make it light and smooth moving
- Motor remember the first open and close stop, and keep no hit on the parts for longer life usage, even the power off and on again
- Working time: 4mins

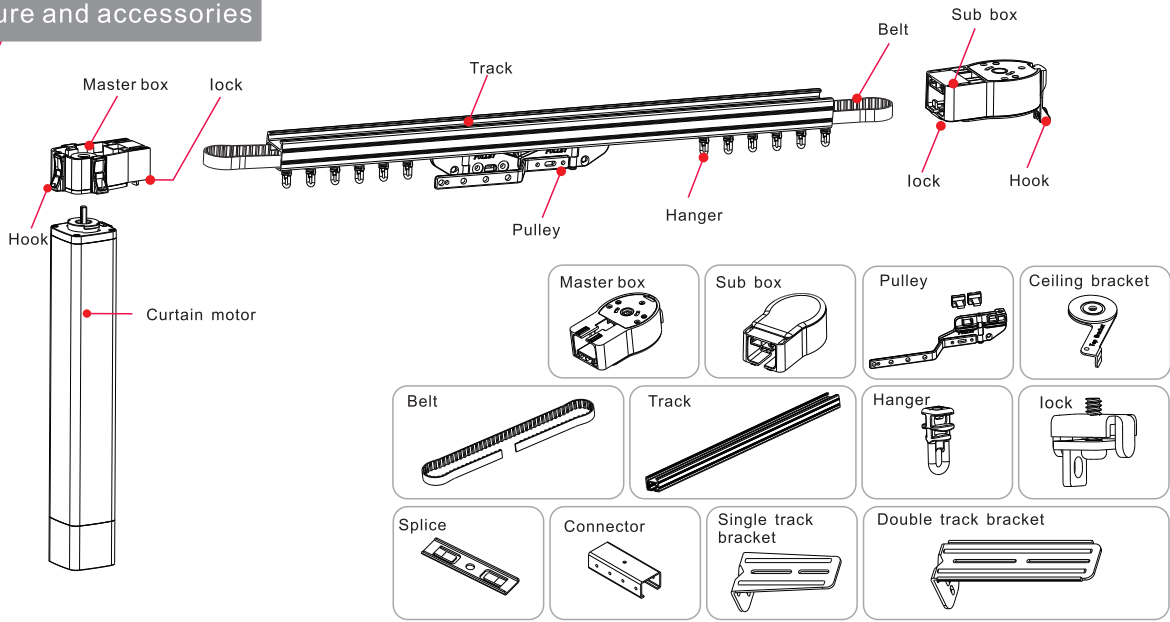
Parameters

| Model No. | Rated torque | Speed | Housing size | Rated voltage | Rated power | IP level |
|-------------------------|--------------|--------|--------------|---------------------|-------------|----------|
| KOK-AM50-1.2/100-EM-P-Z | 1.2N.m | 12CM/S | 295x50x50mm | 100~240V AC 50/60Hz | 65W | IP20 |

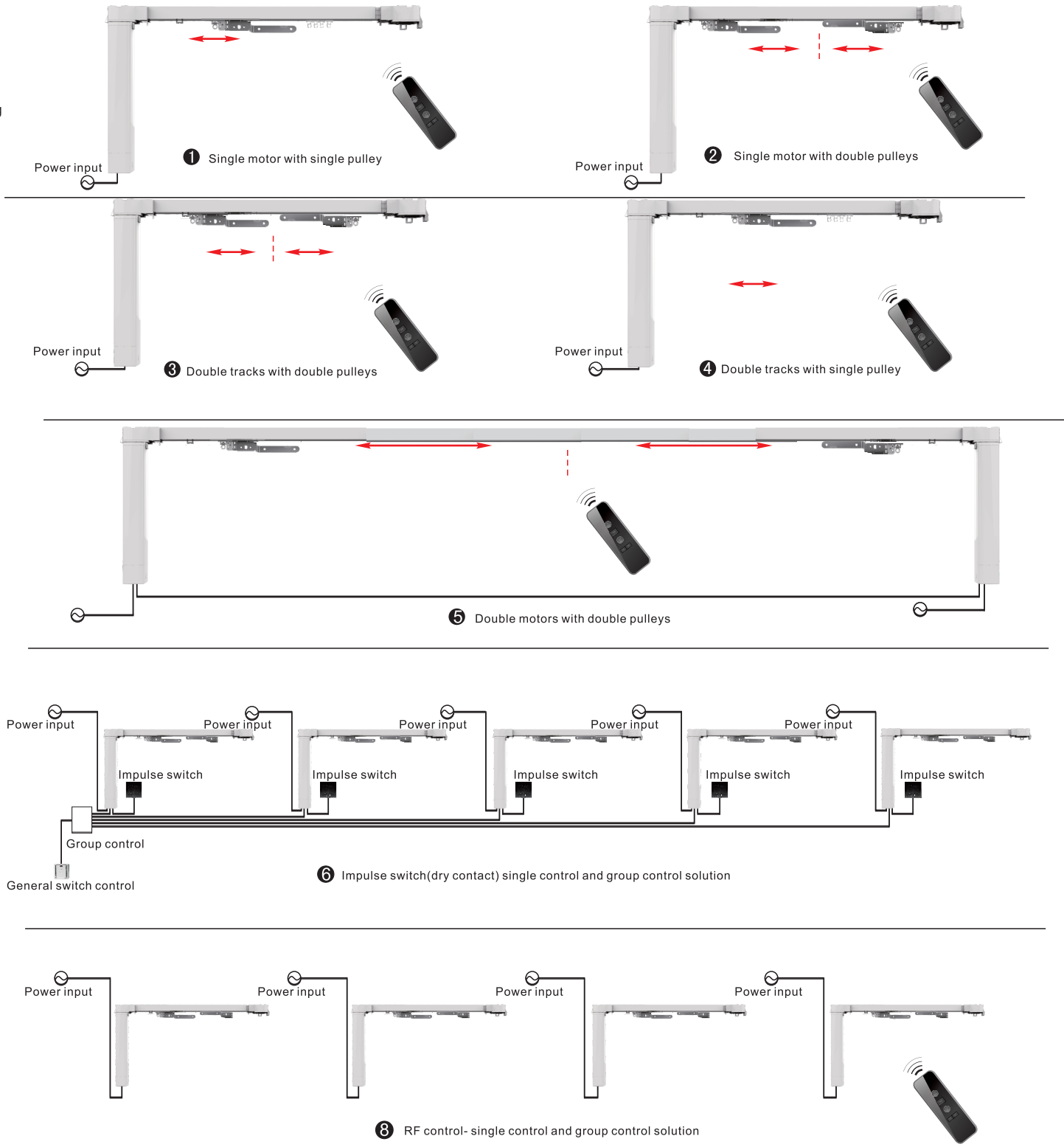
Loading diagram

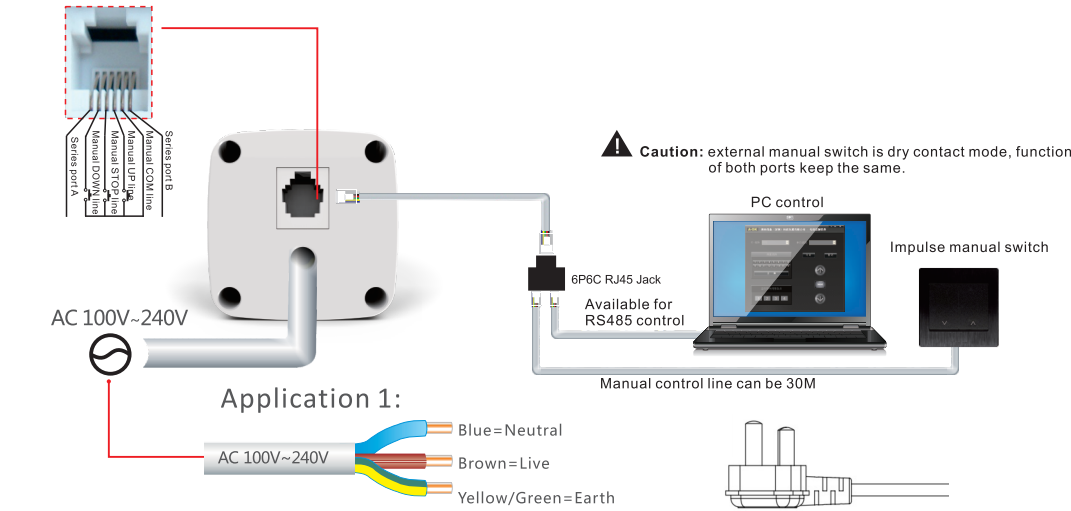
| Track length | Fabric weight | | | | | | | |
|--------------|---------------------------------|---------------------------------|---------------------------------|---------------------------------|---------------------------------|---------------------------------|---------------------------------|---------------------------------|
| | Single motor with double pulley | Single motor with single pulley | Single motor with double pulley | Single motor with single pulley | Single motor with double pulley | Single motor with single pulley | Single motor with double pulley | Single motor with single pulley |
| 4m | 75kg | 60kg | 55kg | 48kg | 42kg | 36kg | 38kg | 25kg |
| 8m | 65kg | 55kg | 50kg | 42kg | 36kg | 30kg | 25kg | 20kg |
| 12m | 60kg | 50kg | 42kg | 35kg | 30kg | 25kg | | |

Structure and accessories



Solution



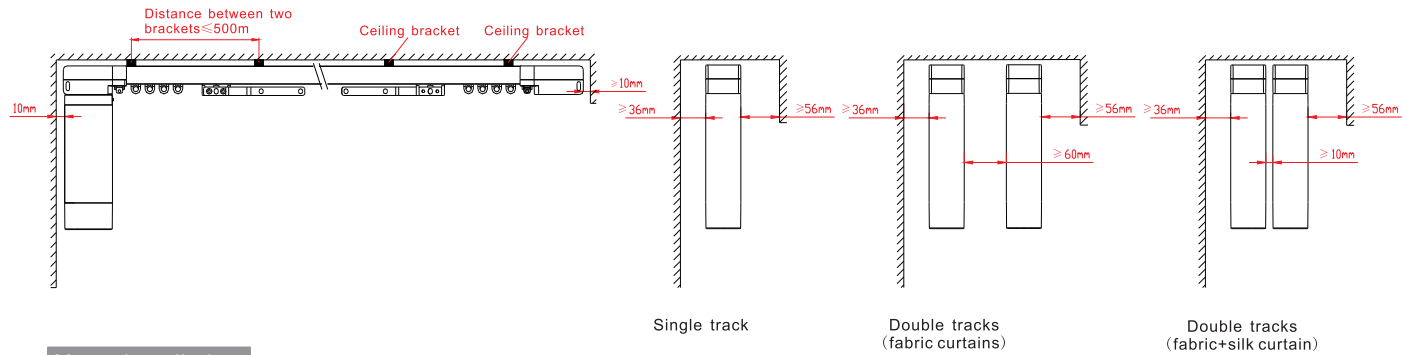


Application 1:

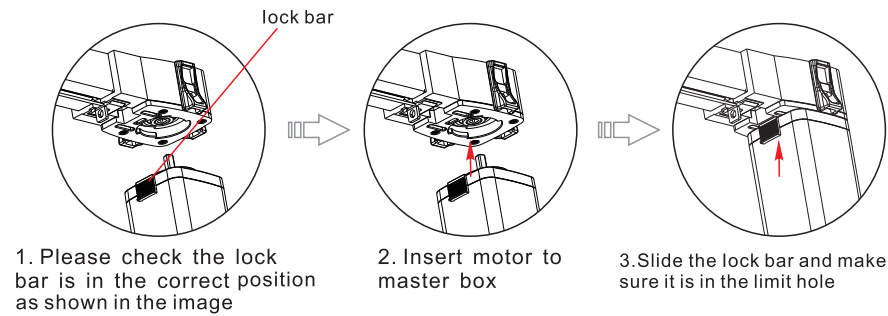
Dry contact, RS485 Control, Radio control

Plug the product into the socket

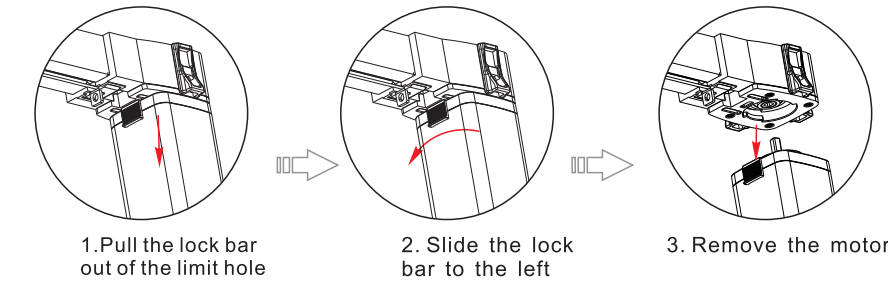
Installation



Motor installation



Motor uninstallation



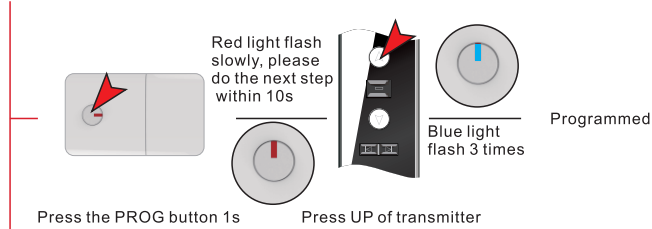
Caution

- ❑ Please follow the above diagram for installation
- ❑ Make sure the lock bar in the position as shown in image
- ❑ Make sure the ceiling is strong enough to bear the total weight of track, motor and curtain

Operation instructions

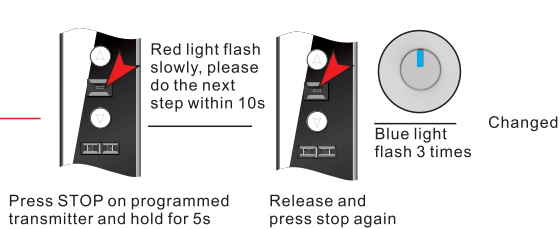
Please select channel for multi-channel transmitter before operation
0.5s is needed for up/down converting, max single running time is 4 min

1 Programming

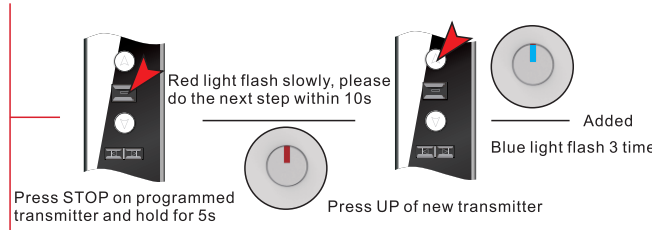


2 Changing direction

In the case of the motor goes in wrong direction



3 New transmitter adding



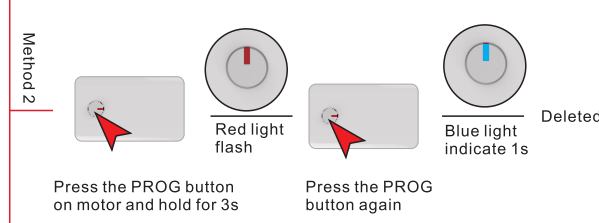
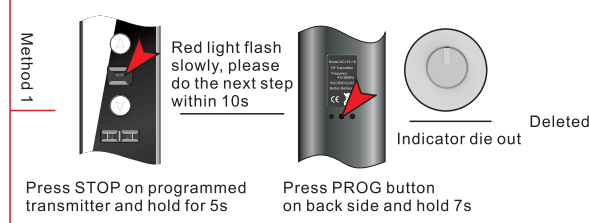
4 Single code deleting

If you are using multiple channel transmitter please select the channel first

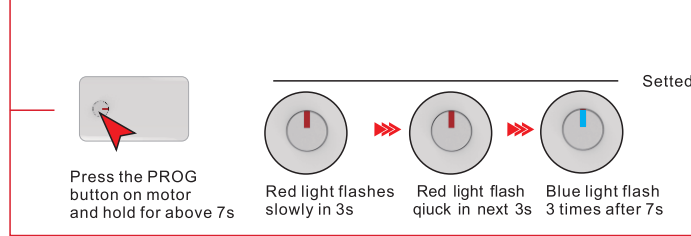


5 All code deleting

Journey will be deleted and the running direction will be the factory defaulted mode, keeping the touch function



6 Manual function setting



Trouble shooting

| Problem | Analysis | Solution |
|---|---|---|
| Power on, but motor no reaction | Check the wiring is correct or not. | Please follow the wiring diagram to correct the connection. |
| Motor is working but the curtain don't move | Check the method of the track installation is right or not. | Please check and adjust the wheel gear and belt. |
| Motor work automatically | Motor paired by other transmitter. | Delete all remotes, programming again. |
| Can't pull curtain move by hand | 1. power off suddenly when motor running 2. the hand pull position is wrong, resulting pulley stuck. | 1. pull the curtains back wards, then pull it again. 2. hand pull position back 10 cm. |