

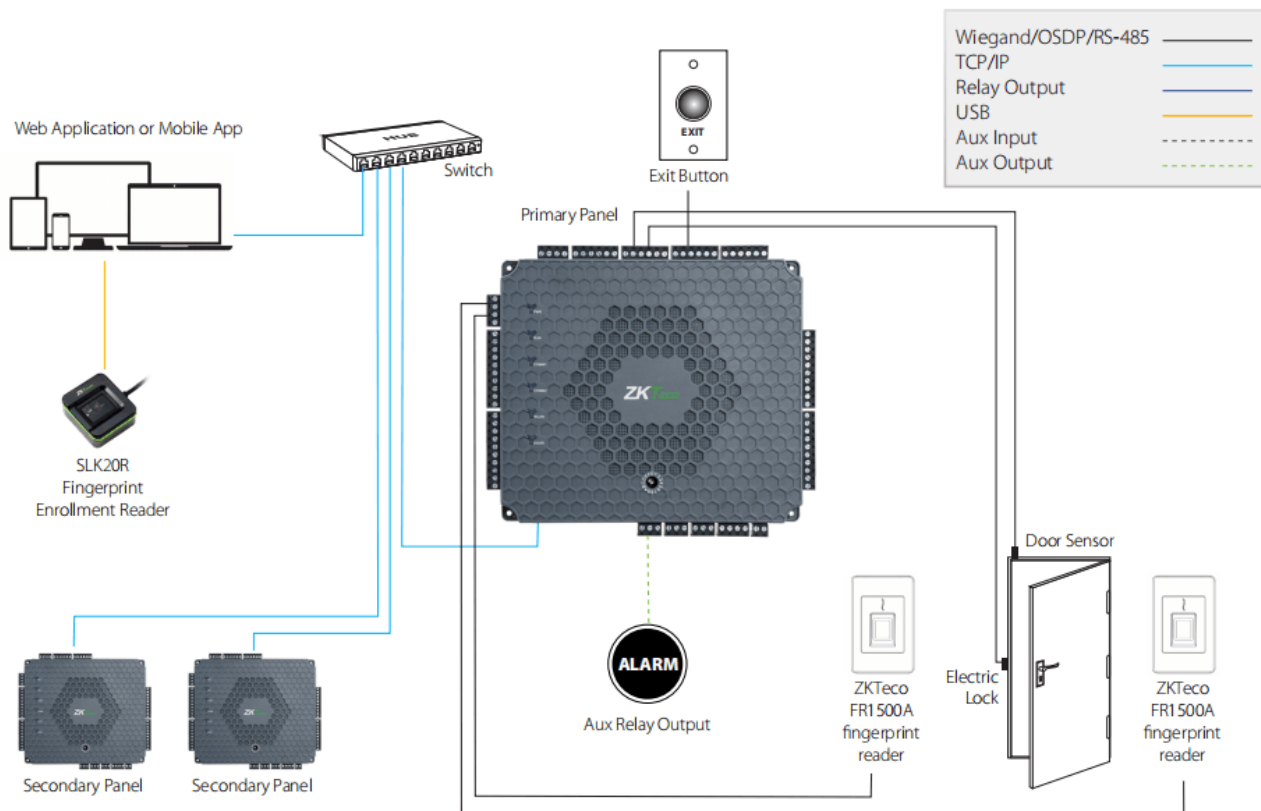


Features of Atlas

Version: 1.0

Atlas Series consists of RFID & Biometric door access control panels which have an embedded web application. The web application eliminates the need for access control management software. Atlas panels support PoE and Wi-Fi. This saves installers time & money eliminating the need to run extra wire. Atlas is extremely easy to install & operate. Atlas includes an easy to navigate online help tool complete with hyperlinks so questions can be quickly & easily searched. Atlas also includes a convenient mobile App which supports both iOS and Android and is available in Google Play and the Apple stores. Atlas is available in 1, 2 and 4-door panels which can support up to 84 doors. Features include User Enrollment & Management, Door Control & Monitoring, Global Lockdown & Unlock, Reporting, Maps, Anti-Passback, Mustering Reporting, First-Card Opening, Multi-Card Opening, Card Design and Duress PINs and more.

User-programmable auxiliary relays can be used to control lights, alarms, annunciators, intrusion detection panels, additional locking devices, or any other external electrical device which can be controlled by a switch. Atlas Series panels communicate securely over a TCP/IP network using SSL/TLS. Supported browsers include Microsoft Edge, Google Chrome and Mozilla Firefox. Atlas Series panels communicate with readers via Wiegand or OSDP communication protocol. The firmware is field-upgradeable, allowing your system to stay current with the latest features and security enhancements.

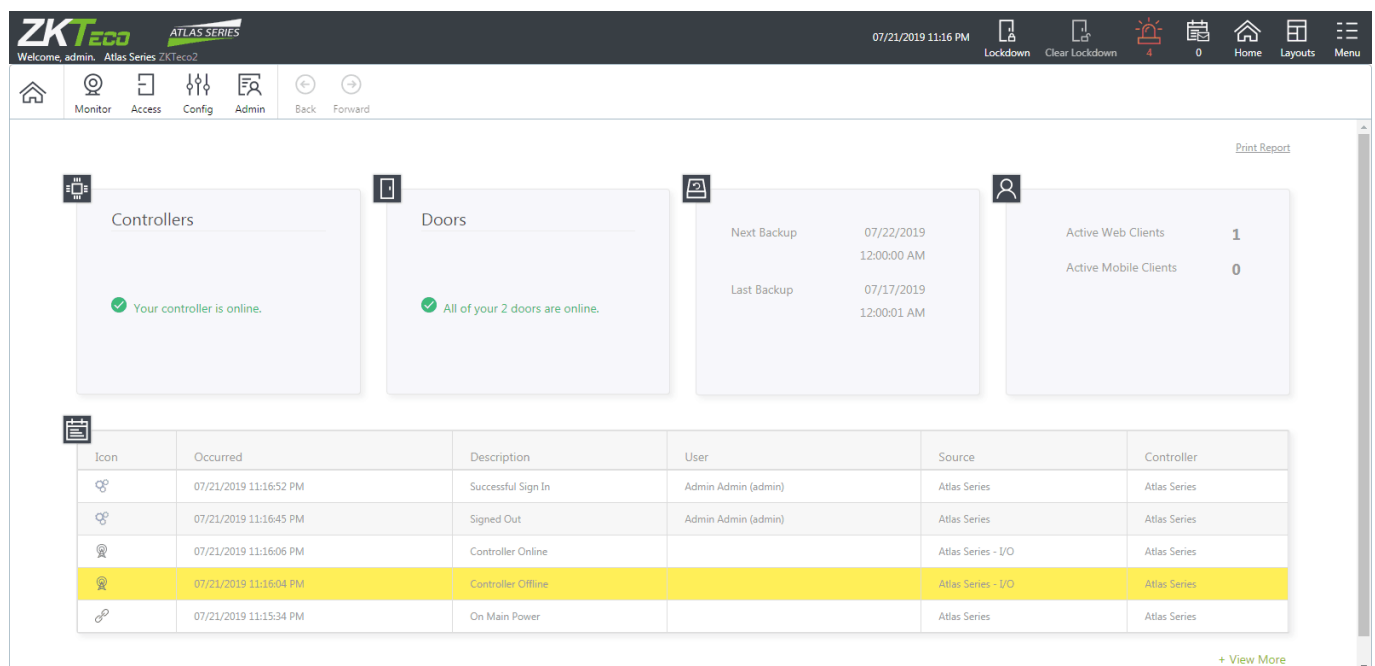


Atlas RFID access control panels (models 100, 200 and 400) can store and match up to 5,000 cards. Atlas RFID panels support ZKTeco KR Series prox card readers. KR Series readers are available in both mullion and single-gang size. Atlas RFID panels additionally support any 3rd-party readers which communicate via Wiegand or OSDP protocols.

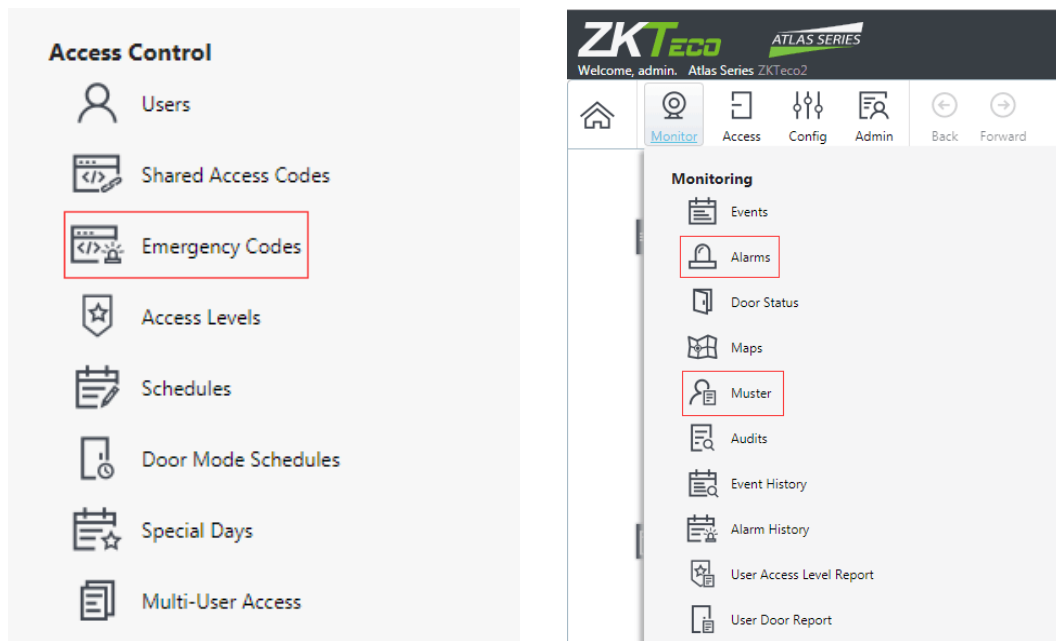
Atlas Biometric access control panels (models 160, 260 and 460) can store and match up to 5,000 fingerprints and 5,000 cards. Atlas Biometric panels support ZKTeco FR1500A fingerprint readers. Model FR1500A is a mullion-sized fingerprint and prox card reader which requires only 4 wires (for power and data) when connected to the Atlas Biometric panel. FR1500A supports both single and 2-factor authentication. Since FR1500A does not store any data, there is no need to connect it with Cat5e/6 cable. Atlas Biometric panels additionally support any 3rd-party readers which communicate via Wiegand or OSDP protocols.

In summary, the Atlas Series by ZKTeco is a powerful, yet intuitive, electronic door access-control system supporting the latest innovations in physical security and biometric access. Please check the feature details as following:

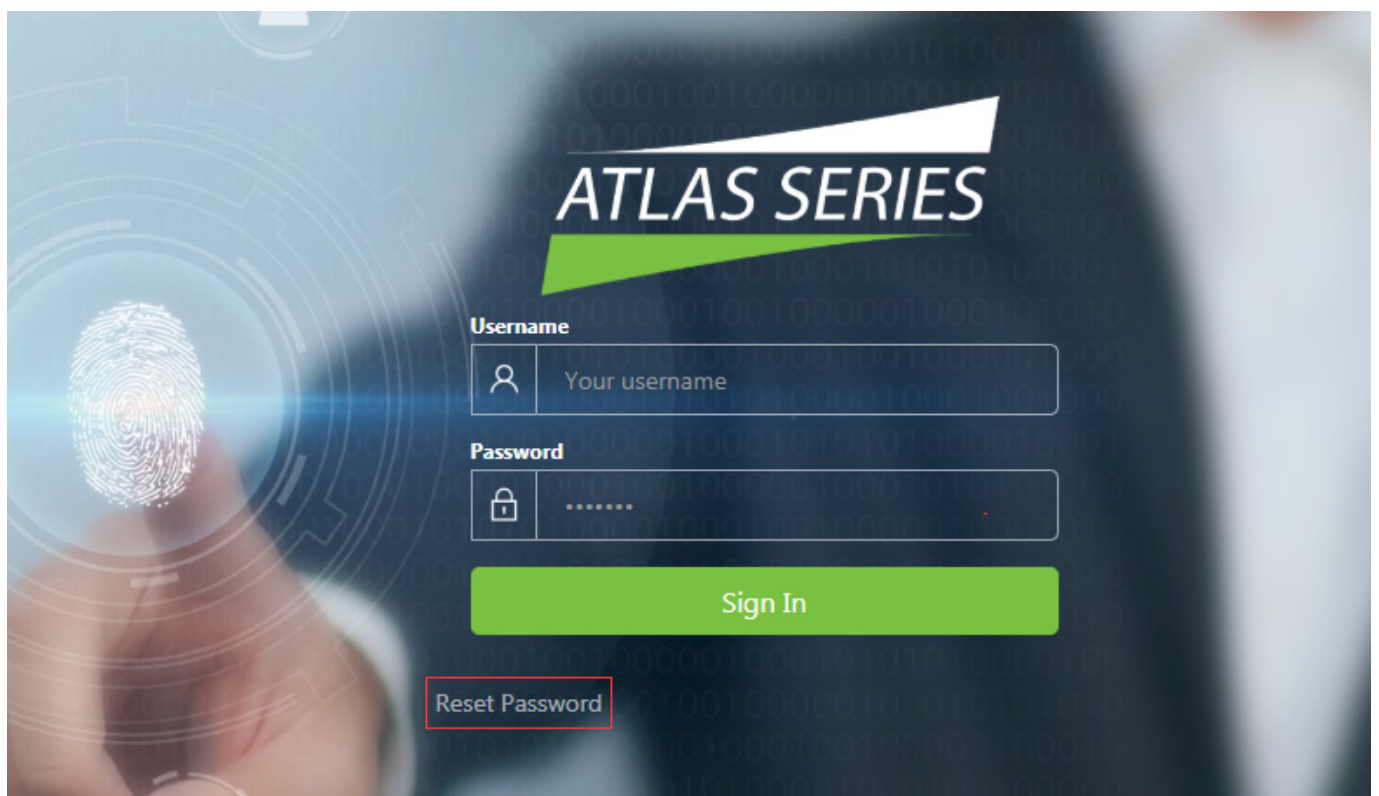
- Powerful, intuitive, Web Management Application built into the Controller - all you need is a web browser; no PC software to install or maintain. This will save your installation engineer a lot of time and it will keep the web management application isolated and safe from potentially conflicting applications.



- Scalability up to 84 Doors by adding maximum 20 Secondary Controllers, quickly and easily using network-based discovery. Easy installation, and easy to use for small projects.
- Critical emergency functions: global lockdown, global emergency unlock, alarm management, duress PINs, emergency codes, and muster reporting.



- Reset password function is available if ever password is lost or forgotten, client can reset the password by himself. But please note, client need register his system first, then he can use this function.



- Atlas supports card printers (requires installation of respective print driver).

Card Designs Monitor Access Config Admin Back Forward Create Save Cancel

Design

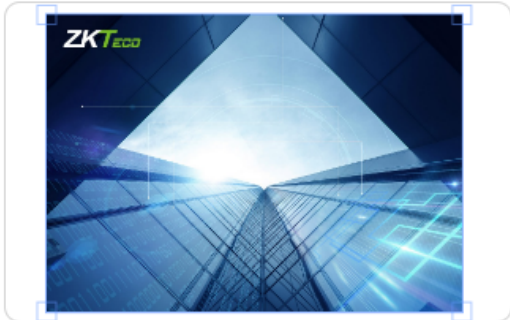
Controls

- Text
- Image


User Fields

- Photo
- Full Name
- First Name
- Last Name
- Email
- Mobile Phone
- Card Number
- Custom Field 1
- Custom Field 2
- Custom Field 3
- Custom Field 4
- Valid From
- Valid To

Front



Back



Image

Select Image...

X Origin: Center

Y Origin: Center

- Secure and convenient fingerprint access using ZKTeco's industry-leading biometric technology (Biometric Atlas Series models only).



(FR1500A)

- Support for industry-standard Wiegand and OSDP card readers, with flexible card format definitions.

ATLAS SERIES
 Welcome, admin. Atlas Series ZKTeco2

07/6/2019 03:14 AM

Lockdown Clear Lockdown 0 Home Layouts Menu

Hardware Monitor Access Config Admin Back Forward Create Save Cancel Upload Firmware Modify Discover Controllers Resync Secondary Controllers Delete

Create Hardware Template

III

Name
 Atlas Series
 > Atlas Series - I/O

^ Readers

Address	Managed By	Model	Reader Type	Keypad Type	Tamper	LED Type	OSDP/RS-485 Add...	
READER1	Door 1	Custom	OSDP		OSDP	OSDP		Reconfigure
READER2	Door 1 - Out	Custom	Data0/Data1 (Wi	Auto		None		

ATLAS SERIES
 Welcome, admin. Atlas Series ZKTeco2

Card Formats Monitor Access Config Admin Back Forward Create Save Cancel

III

Name	Enabled
26-bit Wiegand (Raw)	Disabled
26-bit Wiegand w/Facility Code	Enabled
34-bit Wiegand (Raw)	Disabled
34-bit Wiegand w/Facility Code	Enabled
35-bit Corporate 1000	Enabled
37-bit Wiegand (Raw)	Disabled
37-bit Wiegand w/Facility Code	Enabled
50-bit Wiegand w/Facility Code	Enabled

Name

Bits

Enabled

Facility Code

Facility Code Start

Facility Code Length

Card Num Start

Card Num Length

Parity 1

Start

Length

Location

Mask

- Mobile APP for iOS and Android are available in Google play and Apple stores. User Search for "ZK Atlas".

ATLAS SERIES

Server Address
https://192.168.0.104

Username
admin

Password
Your password

Remember Password

Sign In

About
ATLAS SERIES
Sign Out

System Status

Users

Door Status

Notifications
0

Events

Alarms
9

Lockdown

Access Denied (Unknown Card Number)
2/12/2019, 2:22:21 PM
Source: Door 1

Door Mode: Card or PIN
2/12/2019, 2:22:02 PM
Source: Door 1

Global Access Mode: None
2/12/2019, 2:22:02 PM
Source: Atlas Series

Door Mode: Lockdown
2/12/2019, 2:21:59 PM
Source: Door 1

Global Access Mode: Lockdown
2/12/2019, 2:21:58 PM
Source: Atlas Series

Successful Sign In
2/12/2019, 2:21:54 PM
User: admin
Source: Atlas Series

Unsuccessful Sign In (Unknown Username)

- Online help with convenient hyperlinks provides fast access to detailed explanations describing Atlas functions.

Atlas Series User Guide

Navigation: >No topics above this level<

Introduction

- [Introduction](#)
- [Monitoring](#)
- [Access Control](#)
- [Configuration](#)
- [Administration](#)
- [Features and Tasks](#)
- [Reference](#)

Navigation: >No topics above this level<

Introduction

The Atlas Series by ZKTeco is a powerful, yet intuitive, electronic door access-control system supporting the latest innovations in physical security and biometric access. Atlas Series provides:

- Secure and convenient fingerprint access using ZKTeco's industry-leading biometric technology (Biometric Atlas Series models only)
- Support for industry-standard Wiegand and OSDP card readers, with flexible card format definitions
- Powerful, intuitive, Web Management Application built in to the Controller — all you need is a web browser; no PC software to install or maintain.
- Scalability up to 84 Doors by adding Secondary Controllers, quickly and easily using network-based discovery
- Critical **emergency functions**: [global lockdown](#), [global emergency unlock](#), [alarm management](#), [duress PINs](#), [emergency codes](#), and [muster reporting](#)
- Mobile app for iOS and Android

Using this Guide

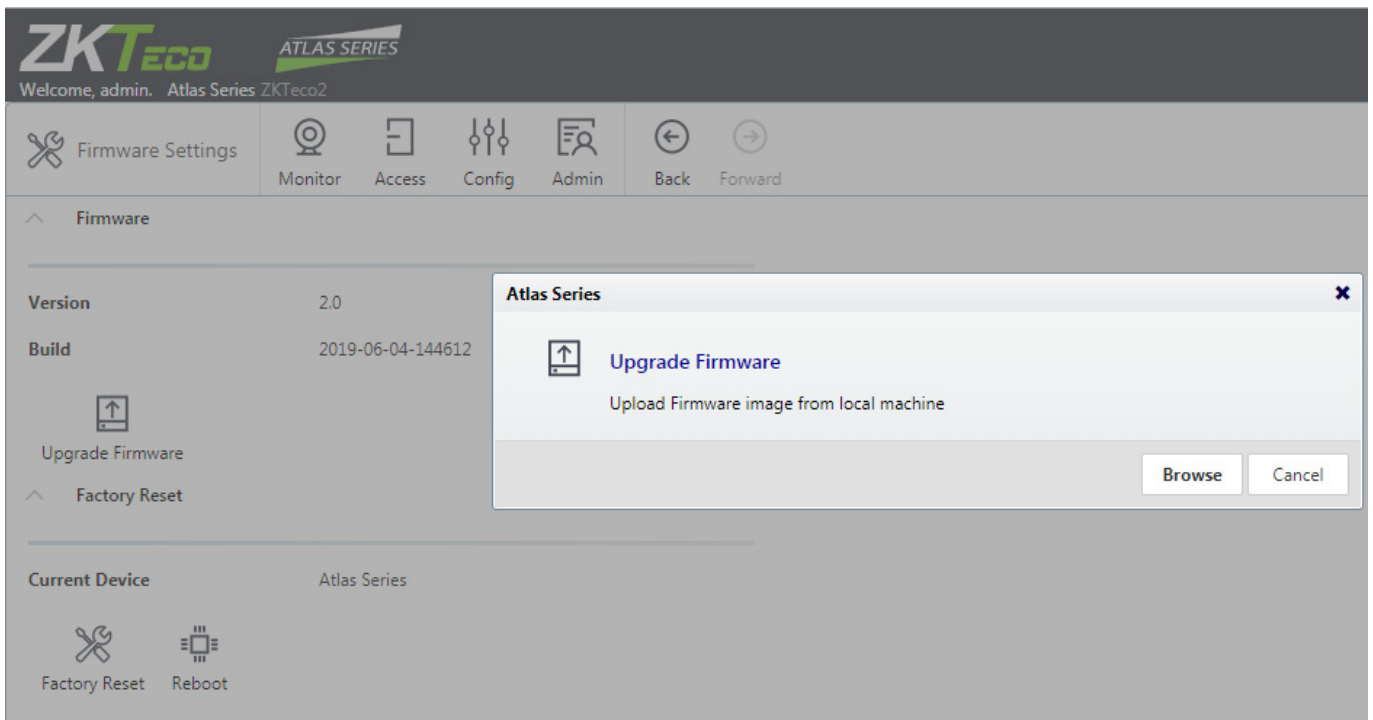
The topics in this Introduction explain how to use the Web Management Application generally.

The four main sections correspond to the four main navigation menus: [Monitoring](#), [Access Control](#), [Configuration](#), and [Administration](#). These topics provide general guidance, and have a sub-topic for each menu item.

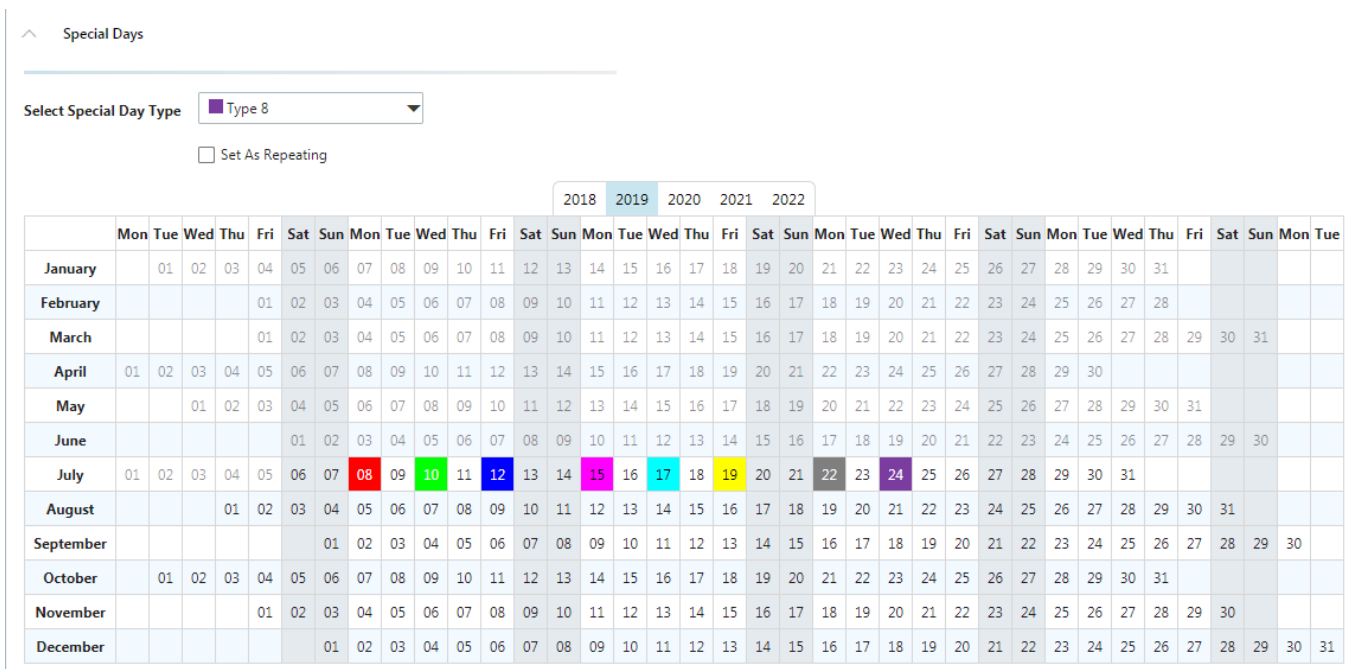
[Features and Tasks](#) describes special features that are not centralized, and explains tasks that are common to several screens.

[Reference](#) includes the [Glossary](#) and other reference material.

- Firmware upgrade via web application. Users can easily update Atlas when new functions are available.



- Up to 8 types of holidays (special days) with different color label and calendar layout makes holiday settings more intuitive.



- More flexible user settings for different needful privileges, like "Access Doors in Lockdown Mode", "Anti-passback Exempt" etc.

Welcome, admin. Atlas Series ZKTeco2

07/21/2019 11:20 PM Lockdown

Users Monitor Access Config Admin Back Forward Create Save Cancel Filter Import Forgive

Name	Personnel ID
Admin Admin	
test test	

PIN

Duress PIN Type: None

- Use Extended Door Times
- Anti-passback Exempt
- Access Doors in No Access Mode
- Access Doors in Lockdown Mode

Access Levels

Name

+ Add
Remove

- Built-in PoE and WI-FI capability reduces installation time & material cost.

