

Unpacking


Please make sure the package contains the following items:

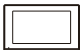
⊙  Plastic wall anchor x 2 ⊕  ST4X20 screw x 2 ⊕  M4X30 screw x 2

 11 Pin cable x 1



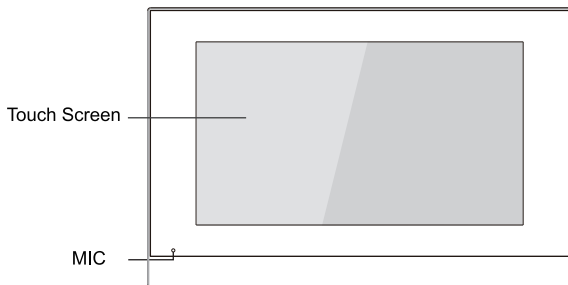
Wall bracket x 1

 10 Pin cable x 1

 C313X-2 x 1

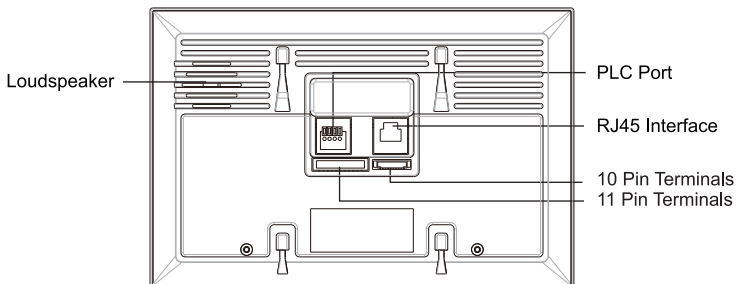
Product Overview

Front Panel



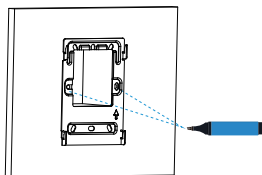
C313X-2

Rear Panel

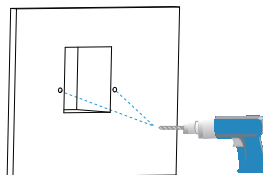


Installation

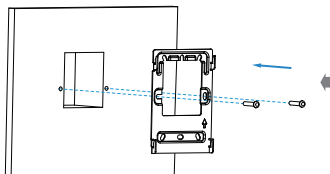
Without 86 embedded box in the wall



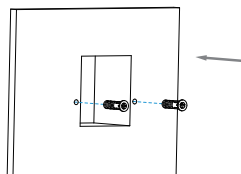
Mark two fixation holes through wall bracket on the wall, the distance between which is 60 mm. Make sure the all cables can be passed from the middle of wall bracket.



Take down the bracket, then using a 5 mm hand drill to make the two fixation holes on the wall you marked before.

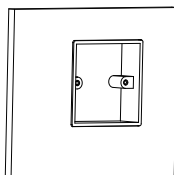


Use two ST4X20 screws to fix the wall bracket on the wall.

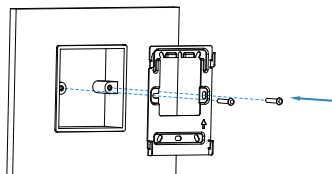


Once the fixation holes are made, insert the two plastic wall anchors provided.

With 86 embedded box in the wall



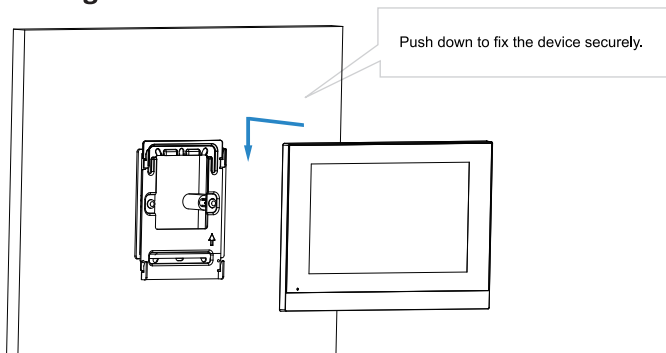
Make sure all cables in the 86 embedded box.



Fix the wall bracket on the 86 embedded box with two M4X30 screws.

C313X-2 Quick Guide

Device Mounting






Configuration

1. After setting up network and power, press **Status** icon to check IP address (DHCP by default).
2. Launch web browser and type in the IP address to access web interface, login with username and password. (admin by default).
3. Register the device with your SIP account. (please refer to user manual for more information).

Operation

Make a call

Press **Intercom** key  , enter the callee's number or room address , then choose **Audio**  or **Video**  mode to call out.

Receive a call

When receiving a video call, users can choose **Audio** or **Video** mode to answer. However, if there is an audio call, users can only press **Audio** mode to pick up.

Unlock

During the talk, press the **Open Door** key **Open Door** in talking interface to unlock the door.

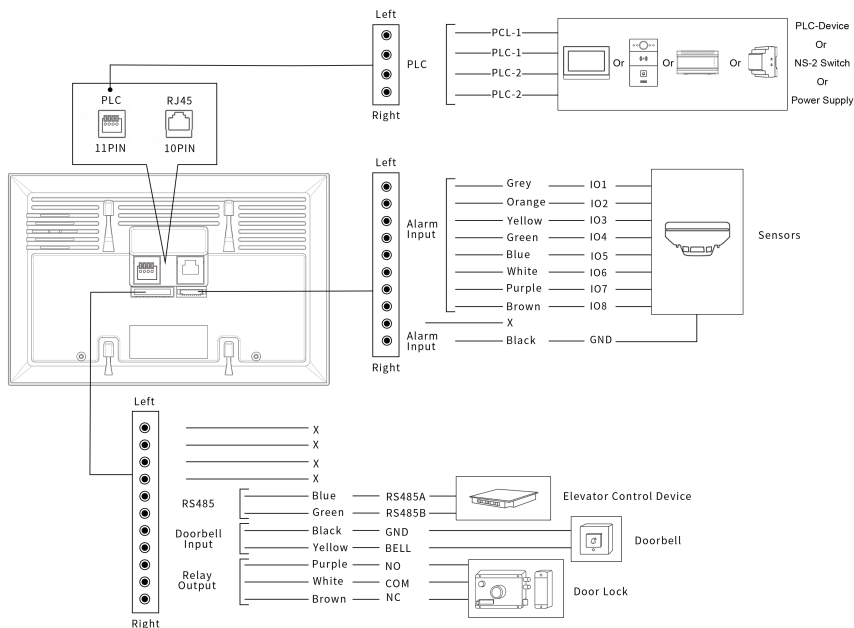
Monitor

Press **Monitor** key  to receive the video from indoor IPC or community IPC any time.

SOS

Press **SOS** key **SOS** in case of an emergency.

Device Wiring



Notice Information

Information contained in this document is believed to be accurate and reliable at the time of printing. This document is subject to change without notice, any update to this document can be viewed on Akuvox' s website: <http://www.akuvox.com> © Copyright 2021 Akuvox Ltd. All rights reserved.



AKUVOX (XIAMEN) NETWORKS CO., LTD.

ADD: 10/F, NO.56 GUANRI ROAD, SOFTWARE PARK II, XIAMEN 361009, CHINA
www.akuvox.com