



4 Hook Rake/Shovel/Cord Rack (48")

Instruction Manual

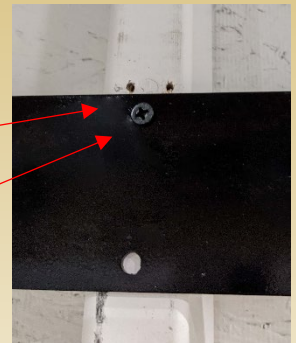
contents:

- 1 - rack
- 8 - #10 2" black screws, #2 sq dr

Setting Up Your 4 Hook Rake/Shovel/Cord Rack (48")

CONFIRM THAT ALL PARTS ARE PRESENT BEFORE BEGINNING ASSEMBLY.

1. Find the studs. You can put these hooks at whatever height you want.
2. Determine how far apart the studs are.
 - a. If the studs are 24" on center, put screws in the holes that are 24" on center and fasten, ensuring that the screws hit the studs.
 - b. If the studs are 16" on center, put screws in the holes that are 16" on center and fasten, ensuring that the screws hit the studs.



Not to exceed 100 pounds per set of hooks or 400 pounds overall.

happy with our products?

Please help us spread the word by leaving a review at: www.SHEDorize.com





Workbench with Pegboard and Accessories (24" x 48")

Instruction Manual

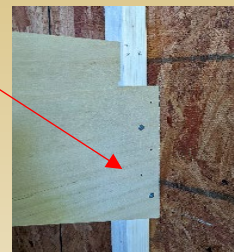
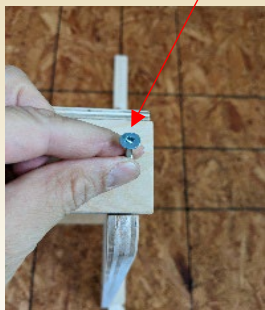
contents:

- 1 - 24" x 48" pegboard
- 1 - 24" x 48" bench
- 1 - 12" x 48" shelf
- 36 - #10 2" zinc screws, #2 sq dr
- 3 - Tool holders
- 4 - support brackets
- 1 - liquid nail

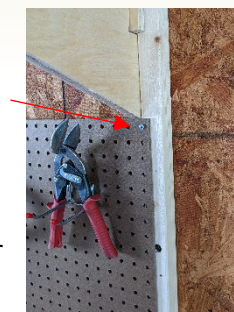
Setting Up Your Workbench with Pegboard & Accessories (24" x 48")

CONFIRM THAT ALL PARTS ARE PRESENT BEFORE BEGINNING ASSEMBLY.

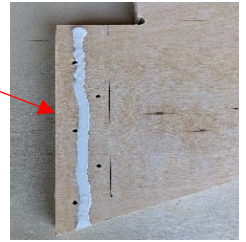
1. Before you install the large brackets, take the liquid nail, and make one line with liquid nail down the center between the mark and the outside edge.
2. We recommend that you install the brackets 36" from the floor to the top of the brackets. Measure from the floor and make a mark where you want the top of the bracket to be. Then, place your bracket with the glue side on the stud, and put a screw in each hole. NOTE: If you have a sheetrock or OSB wall with studs that are not exposed, you'll need to put 2x2 or 2x3 or 2x4s on the wall, so that you can attach those brackets to those. If you do so, make sure they are 4 foot on center.
3. Next, place the workbench top on the brackets, centering it on the two brackets. You can either place a screw in through the front of the workbench into both brackets or place a screw down through the top into both brackets.



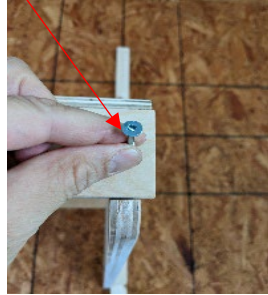
4. Go underneath the top and place a screw in through the back wherever there is a stud.
5. Take the pegboard and center it on top of the bench. Place a screw in each top corner hole of the pegboard on each side and screw it into the stud. (Make sure holes are predrilled) Then, we recommend placing screws at each 12 inch interval down the outside edges. Finally, place screws in each center stud at the top and bottom of the pegboard. NOTE: If you have a sheetrock or OSB wall, you'll need to place another 2x2 or 2x3 or 2x4 in the center of the other two you placed.



6. Take the smaller bracket and make a line of liquid nail down the center between the mark and outside edge. Place the bracket against either the left or right stud above the pegboard, with the glue against the stud. Put a screw in each hole and fasten the bracket to the stud. Repeat this whole step for the other bracket on the opposite side.



7. Take the 12 inch shelf and place it on top of the brackets, making sure it is centered on the studs and brackets. Place a screw either down through the shelf into the brackets, or through the front of the shelf into the brackets.



Not to exceed 250 pounds.

happy with our products?

Please help us spread the word by leaving a review at: www.SHEDorize.com



SHEDorize.com

(717) 617-0091

info@shedorize.com



Cord Hook

Instruction Manual

contents:

- 1 - hook
- 2 - #10 2" black screws, #2 sq dr

Setting Up Your Cord Hook

CONFIRM THAT ALL PARTS ARE PRESENT BEFORE BEGINNING ASSEMBLY.

1. Find the stud. You can put these hooks at whatever height you want.
2. Put the screws in the holes and fasten, ensuring the screws hit the studs.

Not to exceed 75 pounds.

happy with our products?

Please help us spread the word by leaving a review at: www.SHEDorize.com



SHEDorize.com

(717) 617-0091

info@shedorize.com



1 Hook Rack/Shovel/Cord Rack

Instruction Manual

contents:

- 1 - rack
- 2 - #10 2" black screws, #2 sq dr

Setting Up Your 1 Hook Rack/Shovel/Cord Rack

CONFIRM THAT ALL PARTS ARE PRESENT BEFORE BEGINNING ASSEMBLY.

1. Find the stud. You can put this hook at whatever height you want.
2. Put the screws in the holes of the hook and fasten, ensuring the screws hit the studs.

Not to exceed 75 pounds.

happy with our products?

Please help us spread the word by leaving a review at: www.SHEDorize.com

