



Stud Shelving, 4 Shelves

Instruction Manual for Sizes: 16" | 24"

contents:

- 8 - #8 1 3/4" screws, #2 sq dr
- 8 - #8 1" screws, #2 sq dr
- 4 - brackets
- 2- 24" shelf supports
- 1 - 10" shelf
- 1 - 8" shelf
- 2 - 6" shelves

Setting Up Your Stud Shelving, 4 Shelves

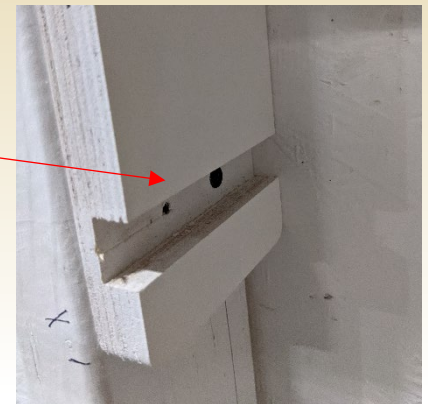
CONFIRM THAT ALL PARTS ARE PRESENT BEFORE BEGINNING ASSEMBLY.

Important Note: Our stud shelving can be used with both open stud walls and with sheet rock or finished walls. Please use the instructions below that correspond to the kind of walls you will install the shelving on.

If your studs are not properly placed at 16" on center or 24" on center, you will have to make certain modifications, such as cutting the shelves down a little or putting a shim behind the shelf supports.

OPEN STUD WALL INSTRUCTIONS

1. Items to note before assembly.
 - a. You can put these shelves at whatever height you want.
2. Install the shelving unit onto the wall.
 - a. Put the shelf supports on the side of the stud, back against the sheet. Use the short screws to fasten through the pre-drilled holes into the stud.
 - b. Repeat step (a) above on the next stud with the other shelf support, so that the shelf supports are on the inside of the two studs, facing each other.



Slide the shelves into the slots in the shelf supports. We recommend using the widest shelf on the bottom and the narrowest on top, but you can place the shelves in whichever order fits your needs.

happy with our products?

Please help us spread the word by leaving a review at: www.SHEDorize.com



SHEDorize

SHEDorize.com

(866) 548-1625

info@amishland.com

SHEET ROCK/FINISHED WALL INSTRUCTIONS

1. Items to note before assembly.
 - a. You can put these shelves at whatever height you want.
2. Assemble the shelving unit.
 - a. Line the first bracket up with the pre-drilled hole on the shelf support and place a shelf of your choice into the slot. Then, use the short screws to fasten in through the pre-drilled hole. (We recommend using the widest shelf on the bottom and the narrowest on top, but you can place the shelves in whichever order best fits your needs.)
 - b. You will need to repeat step (a) above for each of the 3 other brackets, until the shelving unit is fully assembled.
3. Install the shelving unit on the wall.
 - a. Find the studs. Put the long screws in the holes of each of the brackets and fasten, ensuring the screws hit the studs.



Not to exceed 150 pounds.

happy with our products?

Please help us spread the word by leaving a review at: www.SHEDorize.com



SHEDorize

SHEDorize.com

(866) 548-1625

info@amishland.com



Cordless Tool Shelf Instruction Manual

contents:

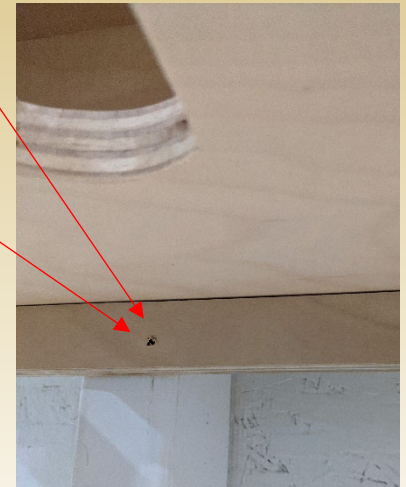
- 6 - #10 2.5" white screws, #2 sq dr

Setting Up Your Cordless Tool Shelf

CONFIRM THAT ALL PARTS ARE PRESENT BEFORE BEGINNING ASSEMBLY.

1. Find the studs. You can put this shelf at whatever height you want.
2. Attach the tool shelf to the wall according to the steps below, depending on the spacing of the studs.
 - a. If the studs are 24" on center, put screws in the holes that are 24" on center.
 - b. If the studs are 16" on center, put screws in the holes that are 16" on center.

Not to exceed 75 pounds.



happy with our products?

Please help us spread the word by leaving a review at: www.SHEDorize.com



SHEDorize

SHEDorize.com

(866) 548-1625

info@amishland.com



Cord Hook

Instruction Manual

contents:

- 1 - hook
- 2 - #10 2" black screws, #2 sq dr

Setting Up Your Cord Hook

CONFIRM THAT ALL PARTS ARE PRESENT BEFORE BEGINNING ASSEMBLY.

1. Find the stud. You can put these hooks at whatever height you want.
2. Put the screws in the holes and fasten, ensuring the screws hit the studs.

Not to exceed 75 pounds.

happy with our products?

Please help us spread the word by leaving a review at: www.SHEDorize.com



SHEDorize

SHEDorize.com

(866) 548-1625

info@amishland.com



1 Hook Rake/Shovel/Cord Rack

Instruction Manual

contents:

- 1 - rack
- 2 - #10 2" black screws, #2 sq dr

Setting Up Your 1 Hook Rake/Shovel/Cord Rack

CONFIRM THAT ALL PARTS ARE PRESENT BEFORE BEGINNING ASSEMBLY.

1. Find the stud. You can put this hook at whatever height you want.
2. Put the screws in the holes of the hook and fasten, ensuring the screws hit the studs.

Not to exceed 75 pounds.

happy with our products?

Please help us spread the word by leaving a review at: www.SHEDorize.com



SHEDorize

SHEDorize.com

(866) 548-1625

info@amishland.com