



4 Hook Rake/Shovel/Cord Rack (48")

Instruction Manual

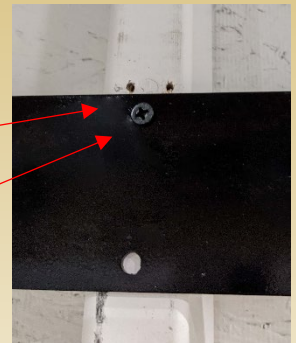
contents:

- 1 - rack
- 8 - #10 2" black screws, #2 sq dr

Setting Up Your 4 Hook Rake/Shovel/Cord Rack (48")

CONFIRM THAT ALL PARTS ARE PRESENT BEFORE BEGINNING ASSEMBLY.

1. Find the studs. You can put these hooks at whatever height you want.
2. Determine how far apart the studs are.
 - a. If the studs are 24" on center, put screws in the holes that are 24" on center and fasten, ensuring that the screws hit the studs.
 - b. If the studs are 16" on center, put screws in the holes that are 16" on center and fasten, ensuring that the screws hit the studs.



Not to exceed 100 pounds per set of hooks or 400 pounds overall.

happy with our products?

Please help us spread the word by leaving a review at: www.SHEDorize.com





Cord Hook

Instruction Manual

contents:

- 1 - hook
- 2 - #10 2" black screws, #2 sq dr

Setting Up Your Cord Hook

CONFIRM THAT ALL PARTS ARE PRESENT BEFORE BEGINNING ASSEMBLY.

1. Find the stud. You can put these hooks at whatever height you want.
2. Put the screws in the holes and fasten, ensuring the screws hit the studs.

Not to exceed 75 pounds.

happy with our products?

Please help us spread the word by leaving a review at: www.SHEDorize.com



SHEDorize.com

(717) 617-0091

info@shedorize.com



1 Hook Rake/Shovel/Cord Rack

Instruction Manual

contents:

- 1 - rack
- 2 - #10 2" black screws, #2 sq dr

Setting Up Your 1 Hook Rake/Shovel/Cord Rack

CONFIRM THAT ALL PARTS ARE PRESENT BEFORE BEGINNING ASSEMBLY.

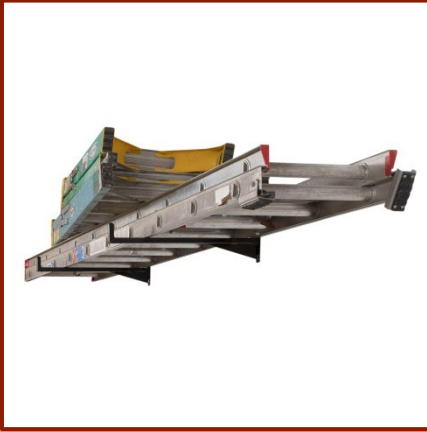
1. Find the stud. You can put this hook at whatever height you want.
2. Put the screws in the holes of the hook and fasten, ensuring the screws hit the studs.

Not to exceed 75 pounds.

happy with our products?

Please help us spread the word by leaving a review at: www.SHEDorize.com





Bike/Ladder/Cord Rack, 1 or 2 Hooks Instruction Manual

contents:

- 1-2 - hooks
- 4-8 - #10 2" black screws, #2 sq dr

Setting Up Your Bike/Ladder/Cord Rack

CONFIRM THAT ALL PARTS ARE PRESENT BEFORE BEGINNING ASSEMBLY.

1. Find the stud. You can put these hooks at whatever height you want.
2. Put the screws in the holes and fasten, making sure the screws hit the studs.
 - a. If you are installing 2 hooks, you can space the hooks as close or as far apart as you'd like, so long as both hooks are on the studs.

Not to exceed 75 pounds per hook or 150 pounds overall.

happy with our products?

Please help us spread the word by leaving a review at: www.SHEDorize.com



SHEDorize.com

(717) 617-0091

info@shedorize.com