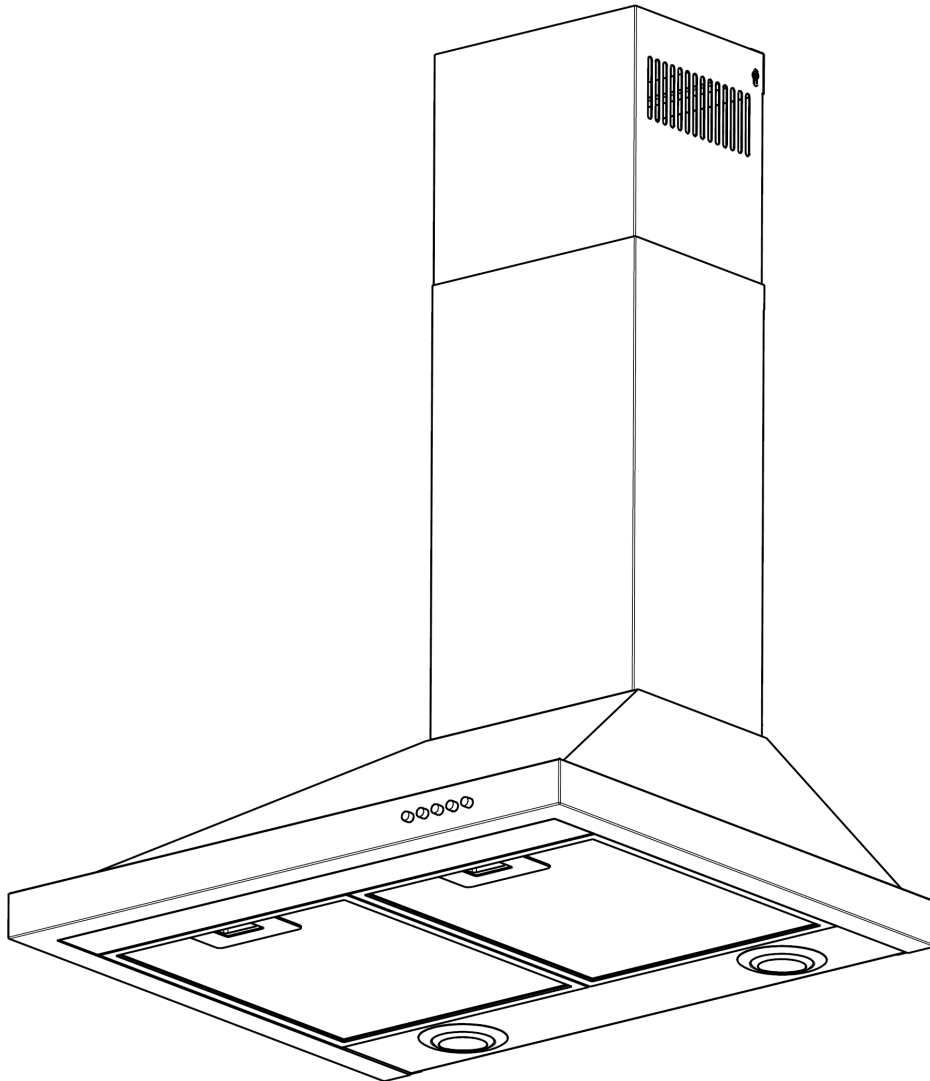


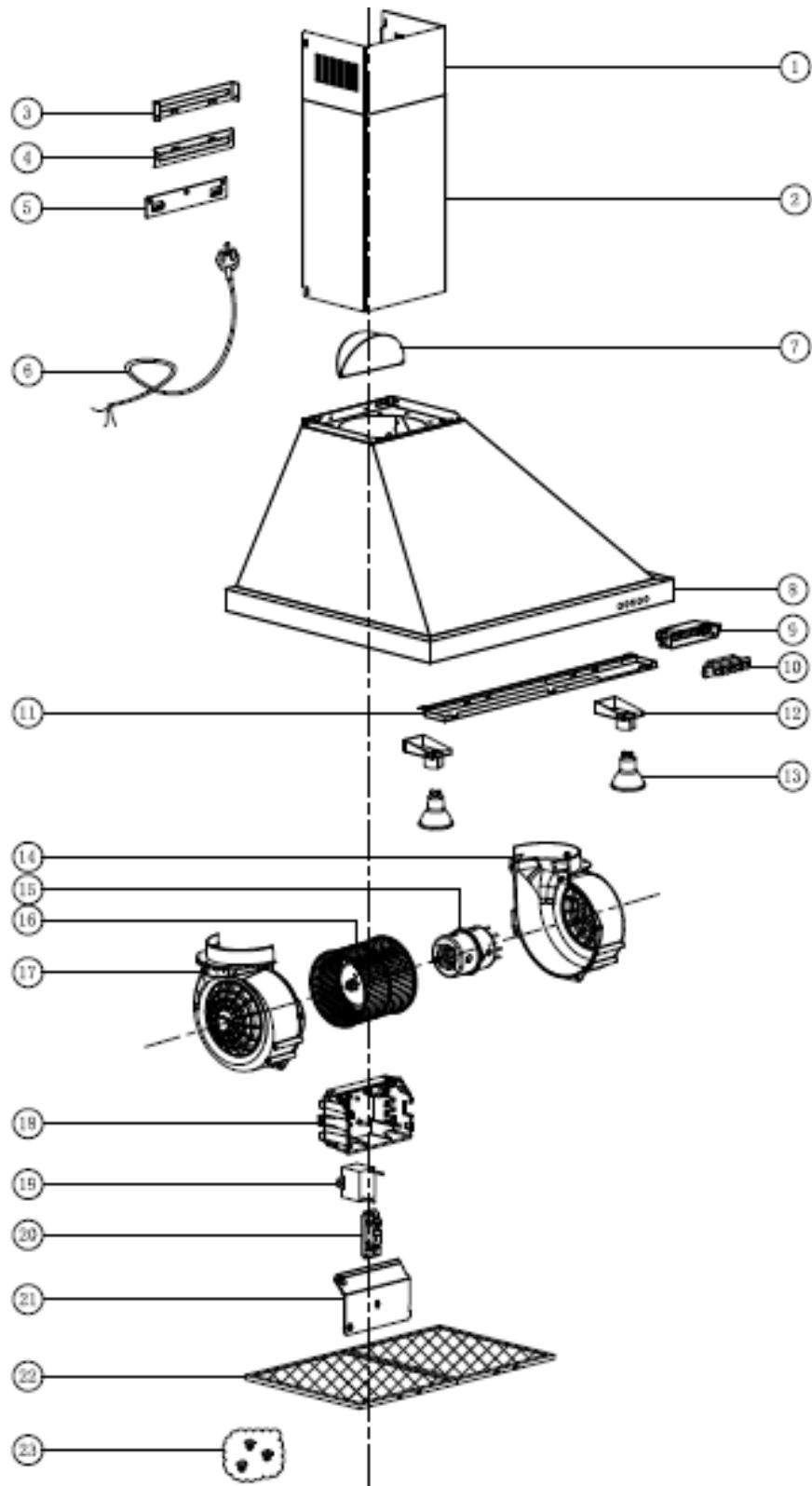
Description: **ROBINHOOD CANOPY RANGEHOOD STAINLESS STEEL**

Model Number: **RWC3CL6SS, RWC3CL9SS**



Model pictured: **RWC3CL6SS**

Exploded view



Model pictured: **RWC3CL6SS**

Parts List

| Item | Description | Part Number | Qty on Product |
|-------------------|---|----------------|----------------|
| 1 | Inner chimney | 1130203517 | 1 |
| 2 | Outer chimney | 1130202532 | 1 |
| Optional | Chimney extension 900-1350mm for 3048mm ceiling | 2188 | 1 set |
| | Chimney extension 900-1850mm for 3658mm ceiling | 2189RH | 1 set |
| 3 | Inner chimney bracket | 1140400071 | 1 |
| 4 | Outer chimney bracket | 1140400070 | 1 |
| 5 | Hook | 1140400072 | 1 |
| 6 | Cable with plug | 1400400050 | 1 |
| 7 | Blades of outlet | 12001010300005 | 1 |
| 8 | Casing assembly for RWC3CL6SS | 1139801964 | 1 |
| | Casing assembly for RWC3CL9SS | 1139801978 | 1 |
| 9 & 10 | Switch assembly | 1400300304 | 1 |
| 11 | Front plate | 1130202480 | 1 |
| 12 | Lamp holder assembly | 1400600026 | 2 |
| 13 | GU10 lamp | 1400600420 | 2 |
| 14 & 15 & 16 & 17 | Motor assembly | AT30-3AMA | Not Available |
| 18 | Electrical box | 12001010200262 | 1 |
| 19 | Capacitor | 1400100132 | 1 |
| 20 | Wiring board | 1400500403 | 1 |
| 21 | Electrical box cover | 12001010200263 | 1 |
| 22 | Aluminium filter for RWC3CL6SS (259.3*319.5) | 1300100072 | 2 |
| | Aluminium filter for RWC3CL9SS (271*319.5) | 1300100040 | 3 |
| Optional | Charcoal filters for RWC3CL6SS | 2536 | Pack of 2 |
| | Charcoal filters for RWC3CL9SS | 2537 | Pack of 3 |
| 23 | Screw bag | AT3503ASW | 1 |

New Zealand

Monaco Corporation Ltd
 Telephone: (09) 415 6000
 Facsimile: (09) 415 7400
 Email: enquiries@robinhood.co.nz
 www.robinhood.co.nz

Australia

Shiro Australia Pty Ltd
 (ABN 28 002 386 129)
 Telephone: 1800 648 556
 Facsimile: 1800 628 577
 Email: enquiries@robinhood.com.au
 www.robinhood.com.au

