

External Solid Wall Lintels - CN71C

Exterior solid wall lintels

Benefits

- Duplex Corrosion Protection System**
Ensures optimum durability and longevity

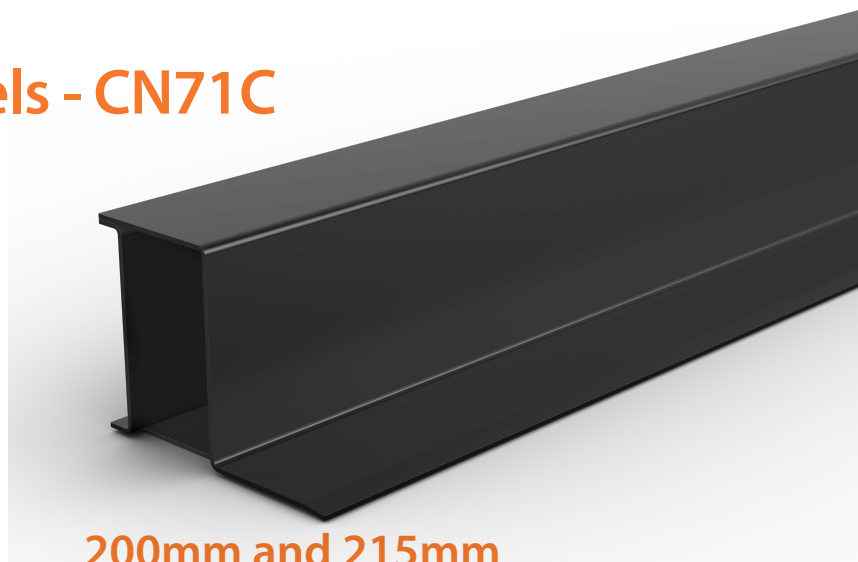
Box profile

- Resists twisting during construction

Instant full load use

Box profile is designed to carry full load of wet masonry as soon as it is installed

Note: CN71 and CN81 lintels can also be used as heavy duty wall eaves lintels for 70mm to 100mm cavities.

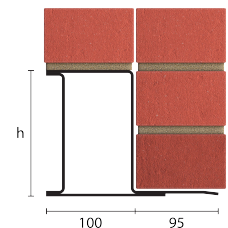


200mm and 215mm Exterior Solid Walls

Heavy Duty



Standard lengths are available in 150mm increments.



CN71C

Standard lengths (mm)	900-1500	1650-1950
SWL (kN)	49	44
Weight (kg/m)	14.6	14.6
Nominal height 'h' (mm)	143	143

The SWL (safe working load) is based on the total UDL (uniform distributed load) over maximum span using 150mm end bearings.