



www.dekra-lite.com • 1.800.436.3627

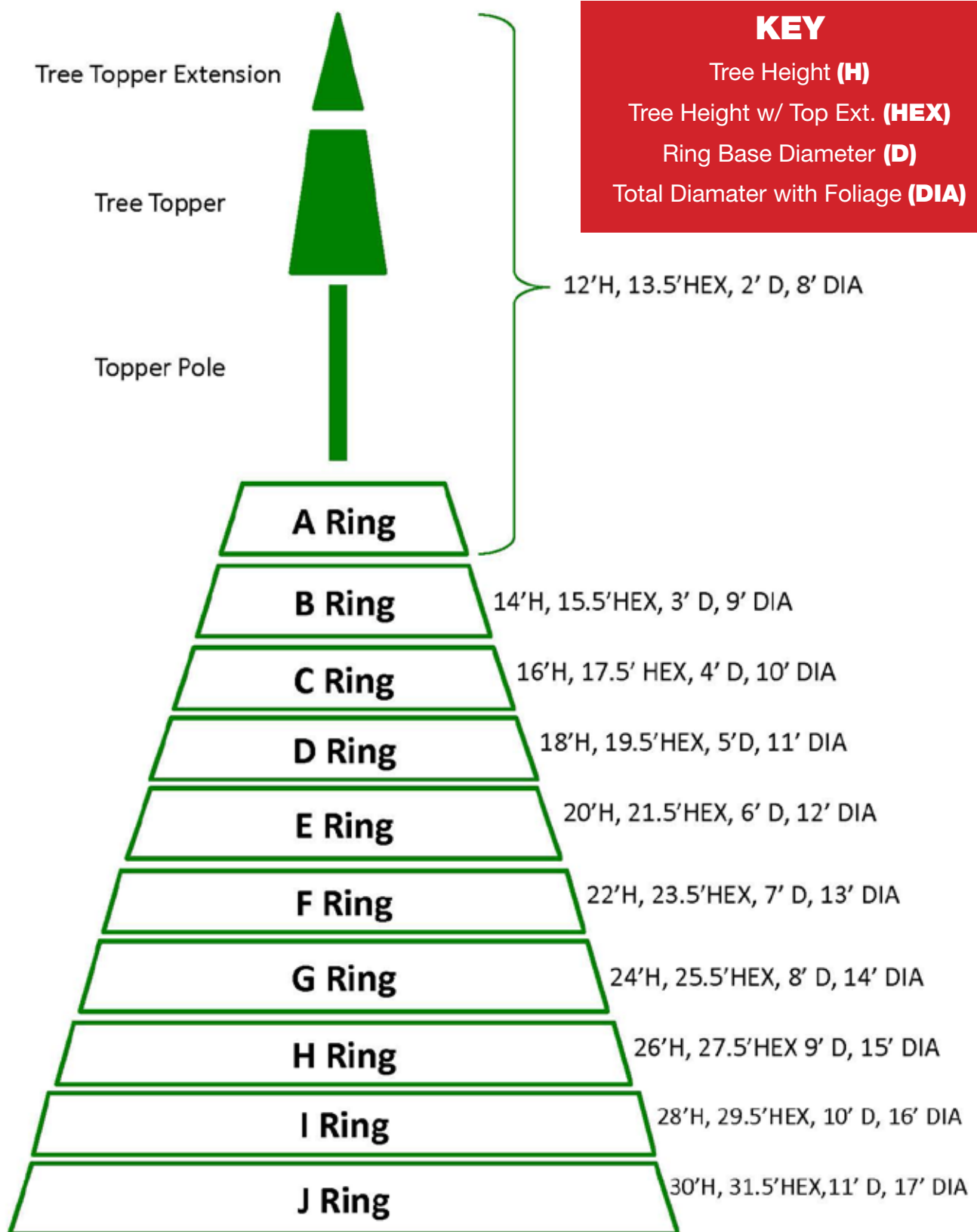
3102 West Alton Avenue Santa Ana, Ca 92704



The Installation Kit includes a parts list specific to your tree. Prior to assembly, it is advisable to take inventory of all Tower Tree components you have received — frame sections, branches, topper, electrical harnesses, and assorted hardware (included in the installation kit) — to ensure that all parts are at your installation site and that none have been damaged or are missing.

If any parts are missing or damaged, please contact your Dekra-Lite sales representative immediately at (800) 436-3627 or email info@dekra-lite.com.

Tools Required: 1/2" Wrench



FRAME ASSEMBLY

INSTALLATION SITE

The installation site should be dry, level, and allow for an anchor system to ensure tree stability.

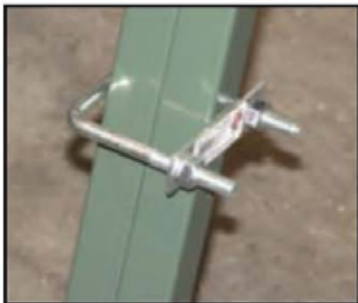
RING SECTION ASSEMBLY

Start with the largest frame layer (bottom of tree).

Place sections together (aligning the vertical assembly tabs on D and E rings) by following the sequence listed on the ring sections and secure with appropriate hardware (note below). When assembling the rings with 4 or more sections, start with section 1 and work counter clockwise until the final section closes the ring.

Note:

Frame Section	Assembly Method
A, B and C	No Ring Assembly Required
D and E	Assemble by inserting Frame Bolt through Vertical Assembly Tab and Welded Nut (see Parts List)
F and Larger	Assemble with U-Bolts (see Parts List)



U-Bolt Assembly



Vertical Tab Assembled

E

Olympia Pine
 Section 1 of 2
 Item 100027227
 Serial No. (E-1)2014-100

E

Olympia Pine
 Section 2 of 2
 Item 100027227
 Serial No. (E-2)2014-100

*Ring Section Labeling
 Examples*



www.dekra-lite.com • 1.800.436.3627

3102 West Alton Avenue Santa Ana, Ca 92704

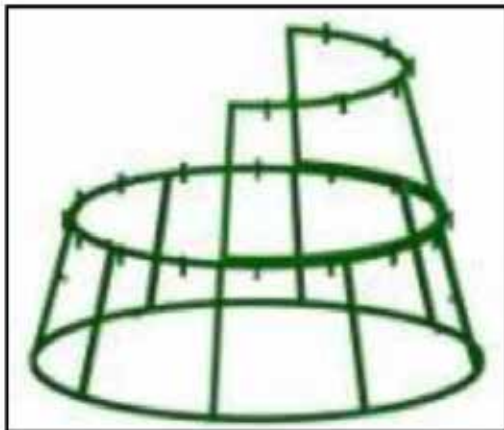
FRAME ASSEMBLY

STACKING RING LAYERS

Assemble the next (smaller) ring layer by placing one section on top of the already-assembled first frame ring, aligning holes for electrical harness. (See the section on Electrical Harnesses for more instructions on installing the harness). Secure ring layer section with method noted below and by aligning the horizontal tabs on each frame section.

Note:

Frame Section	Assembly Method
A, B, C, D, and E	Assemble by inserting Frame Bolt through Horizontal Assembly Tab and Welded Nut (see Parts List)
F and Larger	Assemble with U-Bolts (see Parts List)



Horizontal Tab





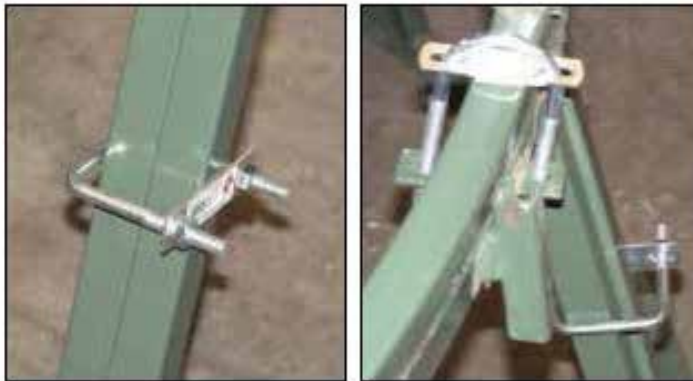
www.dekra-lite.com • 1.800.436.3627

3102 West Alton Avenue Santa Ana, Ca 92704

FRAME ASSEMBLY

STACKING RING LAYERS (CONTINUED)

Rings F and above will need to be bolted together using the enclosed U-bolts & plates. U-bolts will need to be secured both vertically and horizontally on the frames. Attach one U-bolt (referred to as "Row U-Bolts") vertically for each two feet of frame height. For each horizontal section, three U-bolts should be attached horizontally (referred to as "Ring U-Bolts").



U-bolts & Plates

COMPLETED FRAME TREE ASSEMBLY

Continue frame ring assembly by adding each layer as detailed in previous steps.

Ensure that each section is secure and tight before adding another layer to the tree. This will provide maximum stability.





www.dekra-lite.com • 1.800.436.3627

3102 West Alton Avenue Santa Ana, Ca 92704

FRAME ASSEMBLY

TOPPER POLE ASSEMBLY

Insert topper pole into the top of Ring A. It is recommended that the electrical harness is secured to the topper pole before inserting topper pole into Ring A (see Electrical Harness section for more details).

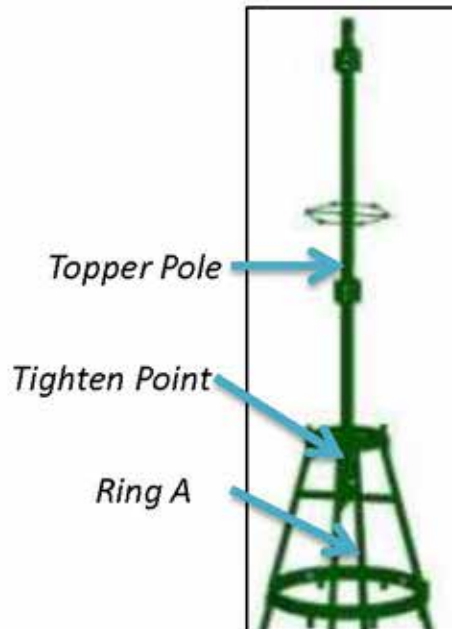


Topper Pole



Ring A

Tighten the 6 bolts on Ring A to secure the topper pole to Ring A.



**THE FRAME
IS NOW
COMPLETELY
ASSEMBLED**



www.dekra-lite.com • 1.800.436.3627

3102 West Alton Avenue Santa Ana, Ca 92704

FOLIAGE INSTALLATION

TREE TOPPER EXTENSION INSTALLATION

The 4.5' Tree Topper includes an opening for a 2' Tree Topper Extension (included in Tower Tree Topper carton) or a decorative tree topper. To install the 2' Tree Topper Extension, remove wing nut and bolt from poly bag attached to stem post. Insert 2' Tree Topper Extension into opening, line up the holes and insert the bolt. Attach wing nut and tighten to ensure best stability.



Tree Topper (2')



Top of 4.5' Tree Topper



Insert 2' Topper into 4.5' Topper

A 6' Extension Cord is included to light the 2' Tree Topper Extension. Plug the Extension Cord into the Tree Topper Pole Electrical Harness and run up through the 4.5' Tree Topper. Plug in the 2' Tree Topper Extension into the Extension Cord.



Tree Topper (2' & 4.5' Together)



Electrical Harness with Extension Cord and Topper Light Plug Attached



www.dekra-lite.com • 1.800.436.3627

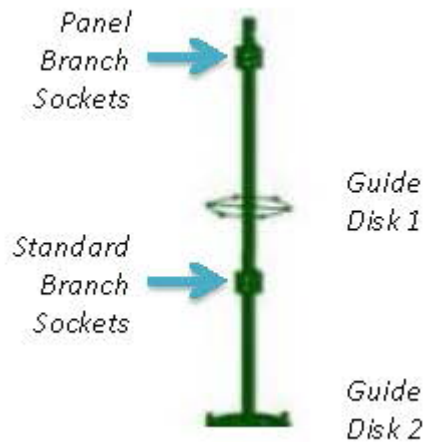
3102 West Alton Avenue Santa Ana, Ca 92704

FOLIAGE INSTALLATION

ALL OLYMPIA PINE TOWER TREE TOPPERS AND BRANCHES ARE MADE WITH READY-SHAPE FOLIAGE – REQUIRING MINIMAL SHAPING.

Topper Pole Foliage

- **Six (6) Panel Branches**
- **Six (6) Standard Branches**



Install the panel branches (6) onto the Topper Pole by inserting hook end of the branch into the metal socket on the topper pole. For proper position align branch through guide disk 1.

Install the standard branches (6) onto the Topper by inserting hook end of the branch into the metal socket on the topper pole. For proper position, align branch through guide disk 2.



*Standard Branch
(Black Tape on Hook)*

*Panel Branch
(Red Tape on Hook)*



Panel Branches Installed on Topper Pole



www.dekra-lite.com • 1.800.436.3627

3102 West Alton Avenue Santa Ana, Ca 92704

FOLIAGE INSTALLATION

BRANCH INSTALLATION

All Frame Sections require Standard Branches (indicated by black tape on the hook).

Starting from the top Frame Section, insert branch hook into the sockets on the Frame Section.

LIGHTY STRAND CONNECTION POINTS

At the top of each branch section there is a male plug, and at the bottom of each branch section there is a female plug.

Plug the male lead of the first branch into the wiring harness. Plug the female tail of that branch into the male lead of the second branch. Repeat for all additional branches on that level.

For each row of branches, make sure the male lead is plugged into the electrical harness.





www.dekra-lite.com • 1.800.436.3627

3102 West Alton Avenue Santa Ana, Ca 92704

REPACKING OF MATERIALS

FRAME SECTIONS

- Clean the surface of Frame Sections before storing – preferably on a pallet

BOLTS, NUTS AND WASHERS

- Repack all hardware in reusable zip lock poly bags.
- It is recommended to pack and store according to part level for ease of future installation

FOLIAGE

- Close the Topper/Branches and repack into box or onto storage rack.
Additional boxes may be required for storage of branches after your first use

TREE TOPPER POLE

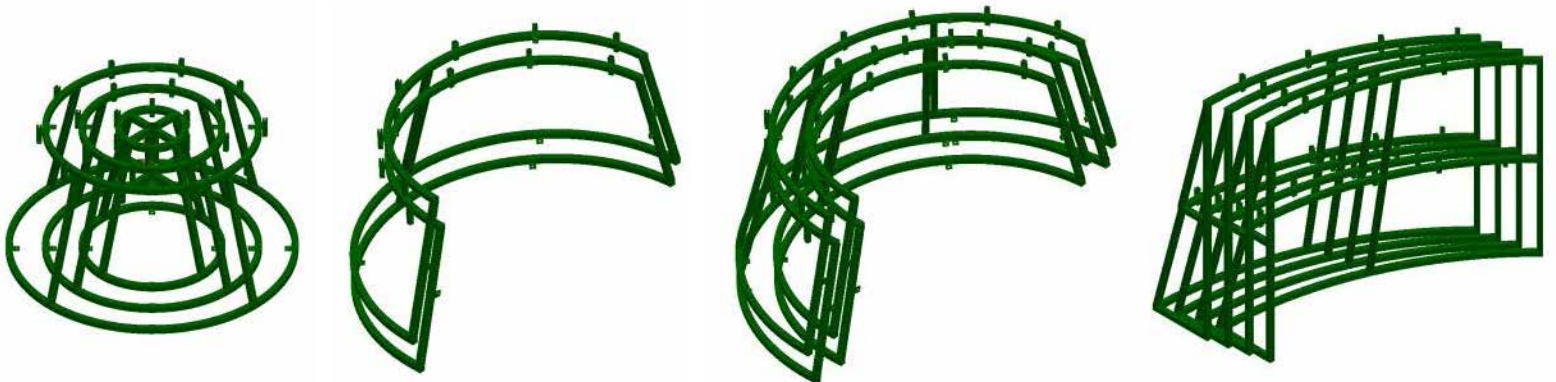
- Clean the surface before repacking into box

STORAGE

OPTIMAL STORAGE CONDITIONS

- Room temperature of storage area should range between 50 and 80 degrees Fahrenheit
- Moisture control will help to prolong the quality of the materials
- Sufficient space for moving material around

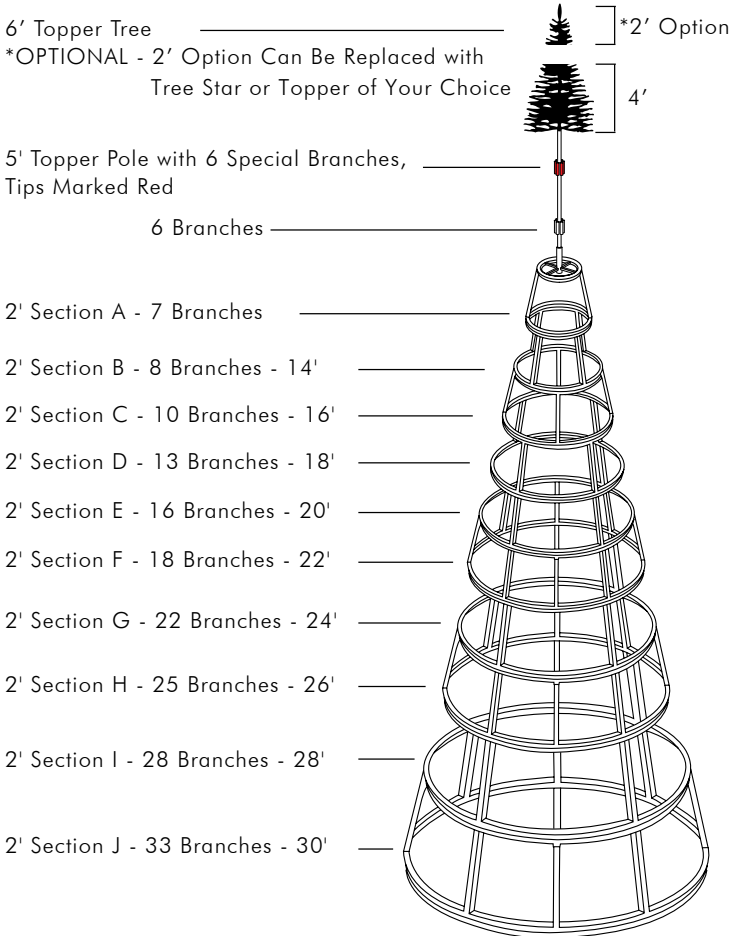
FRAME STORAGE OPTIONS





www.dekra-lite.com • 1.800.436.3627
3102 West Alton Avenue Santa Ana, Ca 92704

MEASUREMENTS, COUNTS & WIRING



WIRING INFORMATION

Tree Height	Row	Metal Frame Sections	Electrical Harnesses	Electrical Connection Per Metal Frame Section
5'	Topper Tree	1 Section	1 Harness	
10'	Topper Pole	1 Section	1 Harness	CEB
12'	Row A	1 Section	1 Harness	CEB
14'	Row B	1 Section	1 Harness	CEB
16'	Row C	1 Section	1 Harness	CEB
18'	Row D	2 Sections	1 Harness	CEB
20'	Row E	2 Sections	1 Harness	CEB
22'	Row F	2 Sections	1 Harness	CEB
24'	Row G	2 Sections	1 Harness	CEB
26'	Row H	4 Sections	2 Harnesses	
28'	Row I	4 Sections	2 Harnesses	CEB
30'	Row J	4 Sections	2 Harnesses	CEB

H - J A - G
Toppers

Height	Overall Width (Feet)	Overall Width (Inches)	Metal Frame Diameter (ft)	Metal Frame Diameter (in)	# of Rows	Branch w/ Topper	Tips	Weight	Warm White LED Mini Light Count	Watts
12'	7'	84	2'	24	1	19	4,980	204 lbs	2,300	221w
14'	8'	96	3'	36	2	27	6,404	283 lbs	3,100	298w
16'	9'	108	4'	48	3	37	8,540	388 lbs	4,100	394w
18'	10'	120	5'	60	4	50	11,032	519 lbs	5,300	509w
20'	11'	132	6'	72	5	66	17,796	687 lbs	6,900	662w
22'	12'	144	7'	84	6	84	27,052	876 lbs	8,700	835w
24'	13'	156	8'	96	7	106	32,036	1,102 lbs	10,900	1,046w
26'	14'	168	9'	108	8	131	42,182	1,365 lbs	13,400	1,296w
28'	15'	180	10'	120	9	159	51,260	1,633 lbs	16,100	1,545w
30'	16'	192	11'	132	10	192	66,212	1,954 lbs	19,300	1,853w



www.dekra-lite.com • 1.800.436.3627

3102 West Alton Avenue Santa Ana, Ca 92704

HARDWARE BY SECTION & TREE SIZE

Section	Tree Height (ft.)	Frame Sections	Bolts Per Section	Bolts Per Tree	Ring U-Bolts	Row U-Bolts	Gusset U-Bolts	Total U-Bolts	Total U-Bolts Per Tree
A	12	1	6	6					
B	14	1	4	10					
C	16	1	4	14					
D	18	2	6	20					
E	20	2	6	26					
F	22	2			6	2		8	8
G	24	2			6	2		8	16
H	26	4			12	4		16	32
I	28	4			12	4		16	48
J	30	4			12	4		16	64