

# 13' Crystal Branch Tree Instructions

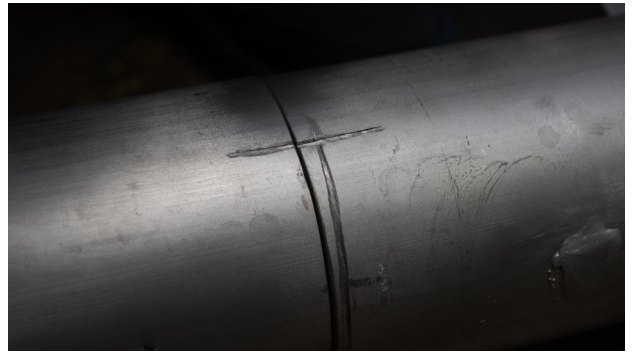
## Parts Included:

- 2 Pole Sections
- 8 Bottom Branches
- 8 Top Branches
- 40 Total Light Strands (2 on each top branch; 3 on each bottom branch)
- 3,240 Total Bulbs

## Instructions:

1. Attach the top and bottom pole sections by lying them on their sides\* and aligning the notches on both pieces.

\*We recommend propping one end of the pole up to make this process easier.



2. Bolt the sections together using two 3/8" x 4 1/2" screws.

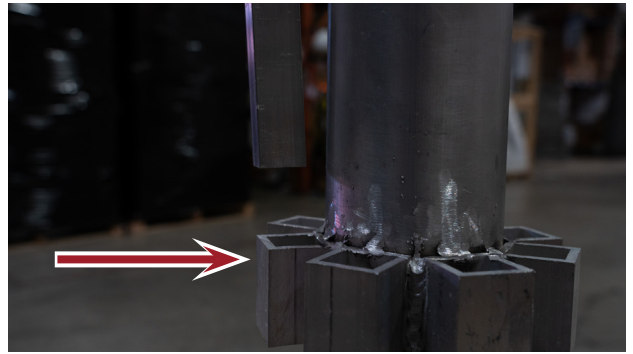


3. Lay the tree base on its side\* and insert the pole into the base.

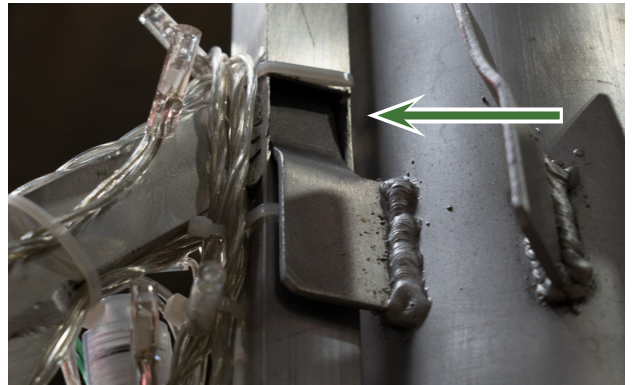
\*Again, we recommend resting the base on another surface to prop it up.



**5.** Select a bottom branch and slide it into the bracket at the base, making sure to align the slot in the top of the branch over the tab in the middle of the pole.

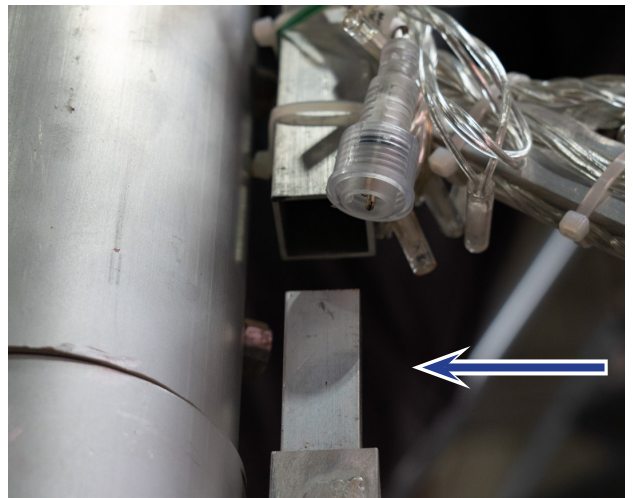
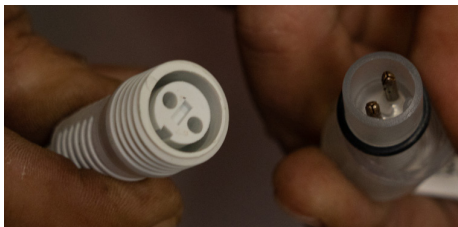


**6.** Select a top branch and slide it into the top of the bottom branch. Again, be sure to align the slot at the top of the branch over the tab at the top of the pole.



**7.** Plug the male connectors at the base of the top branches into the female connectors at the top of the bottom branches.\*

\*Polarity is very important in these connections so make sure to properly align the prongs.



**8.** Plug the male connectors at the base of the bottom branches into the female connectors on the tree base.





9. Plug your tree into a 110V power source to ensure the branches are properly connected and lit before moving forward. If the bottom branch is lit but the top is not, make sure the male and female connectors are properly aligned.
10. Repeat steps 5-9 with the remaining branches. The connectors at the base of the tree can be moved around to better reach each branch.
11. Once complete, fold the cords up the support pole and secure with cable ties for a neat appearance.

