

MOR

by Marta Cruz

MARTA CRUZ Series



WATERCOLOURS by Marta Cruz

The watercolour prints by Marta Cruz approach the relationship between space and time, expressed through colour and composition. Using them as instruments, the designer works with an interplay of different shapes and layers. Interested in the complexity of colours, she never uses them in a raw way, but individually and intuitively searches the shades for each painting.

"I never have a previous idea. I start painting and then the painting takes me along." Marta Cruz

METHOD & MATERIALS

A **Digigraphie** is a printing process made with carbon pigment inks on 270gr fine art paper. It offers great resistance to ultraviolet rays and can be exposed to sunlight without colour degradation.

LIMITED EDITION

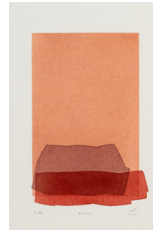
Each edition has a series of 50 prints, numbered and signed by the artist.

TAMEN, standing for meanwhile, is exploring the creation of space through shapes and colour shades. Within this process, the connectivity to the space left on the paper defines a key role.

STRATA & HUMUS are a family of two pieces referring to utopian landscapes, created by layering colours. Being figurative but not realistic, they are an echo of landscapes the artist experienced while travelling in nature. Strata focusing on the sky and Humus on the soil, they are complementing yet contrary.

LIMMA, latin for semitones, is an atmospheric piece created by an overlapping of colour in the totality of the fields, expressing the infinity of space.

TAMEN
20 x 30 cm



STRATA
30 x 40 cm



HUMUS
30 x 40 cm



LIMMA
35 x 50 cm

