

MOR

by Julien Renault

TORRE







TORRE Vase product sheet

Created out of a playful approach to materiality and form, TORRE is a ceramic vase as well as a sculptural piece. Julien Renault chose to mainly follow his intuition and his inspiration, late Italian designer and artist Enzo Mari, to create this minimalistic yet technically complex ceramic object.

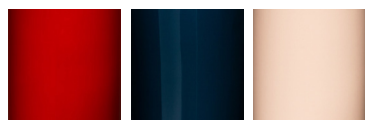
The intuitive first drawings of this piece felt reminiscent of water towers, which led the designer to the final shape of TORRE, a beautiful and unpretentious creation that stays true to its purpose, but not without sparking curiosity.

MATERIALS

Ceramics.

FINISHINGS

Available in three different colours.



Red

Dark blue

Nude

