

MOR

by Eduardo Aires

CRAG

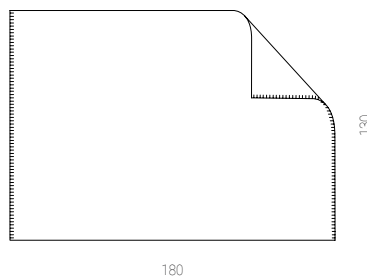






CRAG blanket product sheet

CRAG is inspired by and pays homage to the heritage of wool manufacturing in Serra da Estrela. It is designed with the intent of retrieving and displaying the array of traditional loom stiches, in juxtaposition. Although very graphical and experimental, the result is brought together under two versions: a neutral greyscale style and a multicoloured palette, resulting in a contemporary object.



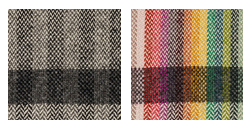
VERSIONS

Available in two different sets of colours.

MATERIAL

Burel - 100% pure sheep wool.

FINISHINGS



Black & white Multicolour