

TUBULAR PVC MAT

ANTI-FATIGUE MAT / WET AREA



Versatile and lightweight.

The **Tubular PVC Mat** is designed and manufactured from non-toxic food grade PVC tubes welded into a grid formation.

While being lightweight and easy to roll-up and move, this multi-purpose mat is easy to clean and helps prevent damage and breakage to dropped items.

This economical mat offers great drainage as well as excellent anti-fatigue and non-slip properties, making your workplace or recreation environment safer and more comfortable.

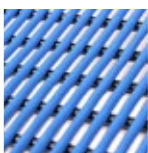
FEATURES & BENEFITS

- Non-slip with excellent anti-fatigue properties
- Lightweight and easy to clean
- Easy to install - *can be cut to any size without any special tools*
- UV, flame and chemical resistant
- Prevents glass breakages and improves safety
- Keeps feet dry in wet environments
- Good sound reducing properties
- Contours to uneven floors
- Offers insulation from cold or damp floors
- Available in 600/910/1220mm x 12m rolls or Made to Measure

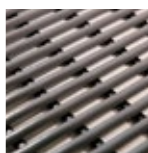
SPECIFICATIONS

Uses	Wet or dry areas. Indoor / Outdoor
Materials	Flexible low toxicity PVC
Thickness	10mm

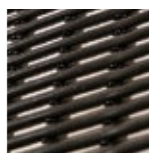
COLOURS



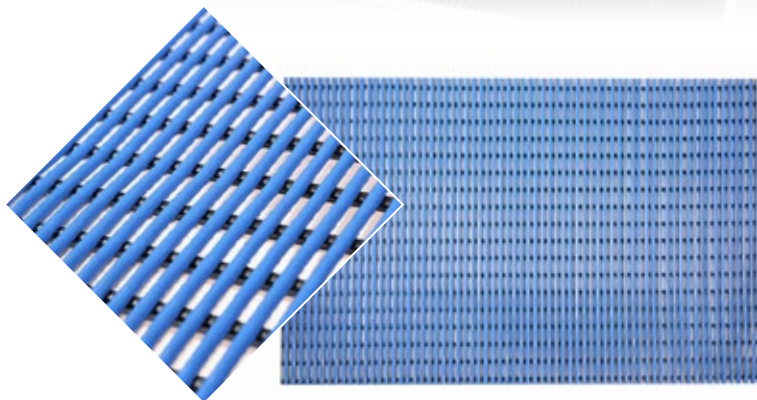
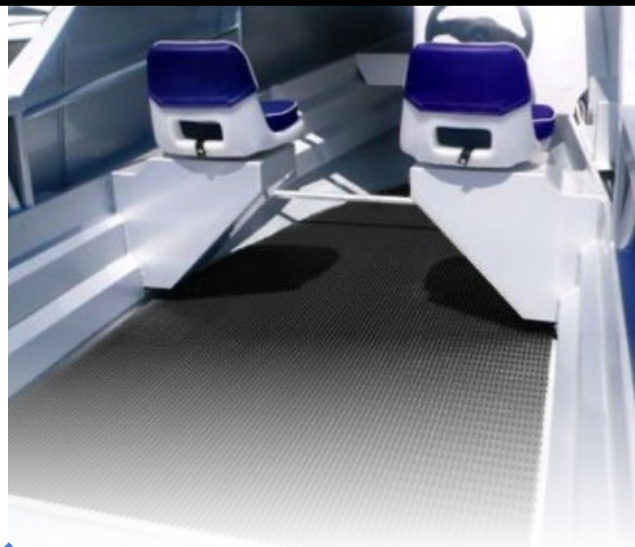
Blue



Grey



Black



RECOMMENDED FOR

- Marine vessels & environments
- Hospitality industry
- Aquatic centres
- Change rooms / Locker Rooms
- Pool and Spa areas
- Commercial kitchens
- Packing areas
- Laundries



WE LOVE MATS

1800 300 311 | info@thematgroup.com.au | www.thematgroup.com.au

