



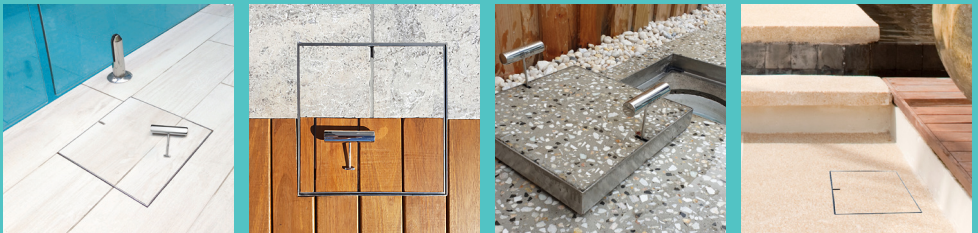
USA DESIGN PATENT
US D917,022 S



FOR THE HOMEOWNER

CARE & MAINTENANCE

PLEASE PASS TO THE HOMEOWNER



HIDE® Skimmer Lids conform to
Australian Safety Standards



WARNING! DO NOT ALLOW ACID OR CHEMICAL
WASH SOLUTIONS TO CONTACT THE HIDE PRODUCT.



H I D E®

THANK YOU

FOR CHOOSING A HIDE® PRODUCT

HIDE products are designed for durability and safety. However, there are a few important points to remember when:

- having a HIDE product installed; and
- using and maintaining a HIDE product

This manual explains the best practise to:

- ensure your product is installed correctly
- ensure safe HIDE use practises
- ensure correct care and maintenance of your HIDE product

Remember - misuse, unsafe practises or incorrect procedures may void the HIDE warranty.

Please read this manual in conjunction with the HIDE warranty document enclosed within, and store both in a safe place for future reference.

If you have any queries, please refer to the detailed information on our website or contact us via your preferred method.

SAFETY FIRST



BAN LITTLE FINGERS

NEVER allow children to operate the HIDE Safety Key or the lid itself. This is a job for adults!



TURN OFF FIRST

NEVER open a skimmer with the pump running.



CHILD SAFETY

DO NOT leave nearby children unattended while the lid is removed.



WAIT TO ACCESS

REMOVE the lid *completely* before accessing the uncovered recess.



PROTECT FINGERS

ENSURE fingers/toes are not under the lid when lowering.



KEEP THEM SEPARATED

NEVER leave the HIDE Safety Key in the Lid for any reason. The key is not specified or designed to remain in the lid.



NO WEIGHT BEARING

DO NOT carry the lid with the Safety Key. This may damage the key.



SAFE STORAGE

ALWAYS return the Safety Key to a child safe, secure stored location.

WARRANTY

INTERNATIONAL



SCAN THE QR CODE

INSTALLATION

ALWAYS USE A LICENSED CONTRACTOR!



SCAN THE QR CODE

MAINTENANCE REQUIRED



WARNING! DO NOT ALLOW ACID OR CHEMICAL WASH SOLUTIONS TO CONTACT THE HIDE PRODUCT.



BEWARE OF ACID + CHEMICAL WASHING

Pool owners may look at professional acid washing if their pool is suffering from algae build-up and water discolouration. Similarly, home owners may look to clean their outdoor pavers or tiles with a chemical wash. If embarking on either option, please be aware that the ***Stainless Steel HIDE components must not come into contact with any acid or chemical washing solutions.***

Chemical contact with most pool and paving cleaning solutions will rapidly affect the surface finish of the stainless steel HIDE components. The resulting rust will damage the lid inlay, and potentially the structural integrity of the HIDE lid itself. ***Alternatives are available in the form of "Green Acid Replacement."***



GENERAL CARE

It's a good idea to regularly open your HIDE product and check for and ***remove any leaf-litter or debris*** which may have gathered inside the HIDE Edge Protector. If not removed, the debris may cause the HIDE lid to become loose or to sit unevenly.

Check regularly to ensure the HIDE product is fitting well, and is sitting evenly in its recessed area.



REMOVING "TEA STAINING"

Occasionally you might notice some cosmetic discolouration on the stainless steel components of the HIDE product, often known as "tea-staining". Although HIDE lids are made of 316L marine grade stainless steel, within water environments it's normal for visible surface rusting to occur. The issue, if treated whenever noticed, will not affect the structural performance of the HIDE product.

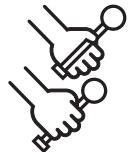
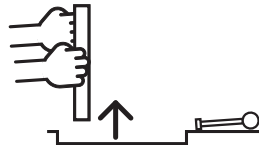
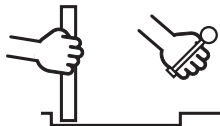
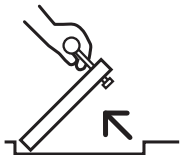
Typically the tea-staining will form on the underside of the HIDE lid where residues and salt deposits gather. ***To clean, all you need is a stainless steel scourer, soapy water and a little elbow grease.*** Just be sure to use the scourer parallel to the grain direction of the HIDE lid. Rinse thoroughly when done.

Please be aware that if the surface staining is allowed to build up over time, possible rust bleeding may leach onto the HIDE lid inlay or surrounding paving. This is not a fault of the lid and is completely avoidable with occasional cleaning. If allowed to occur over a prolonged period, the leaching may not be able to be removed.

Please note that rain washing is not sufficient in most applications.

SAFE OPERATION

PLEASE SCAN THE QR CODE FOR SAFE OPERATION PROCEDURES FOR 1 AND 2 KEY LIDS



INSERT the Safety Key and turn to 90° so it locks onto the back of the lid. Pull the key upwards to lift the lid edge to a 90° position.



SCAN THE QR CODE

REMOVE the lid with your hands, not the key.

REMOVE keys and store away from children.



USA DESIGN PATENT
US D917,022 S



FOR THE HOMEOWNER

CARE & MAINTENANCE




HEAD OFFICE

26 Link Drive,
Yatala, Qld, 4207
Australia

AUSTRALIA

P: +61 7 3807 2551
M: 0427 270 560
E: admin@skimmerlids.com.au
W: www.skimmerlids.com.au

NORTH AMERICA / UK / EUROPE

USA Cell/WhatsApp: **949 942 4905** 
C: +61 438 075 641
E: sales@skimmerlids.com.au
W: www.skimmercovers.com

PROUDLY MANUFACTURED BY:
SKIMMER LIDS
PTY LTD



MANUFACTURED
IN AUSTRALIA



NOTE! If installation varies to Skimmer Lids Pty Ltd recommendations or is used in any way other than specified, warranty and all liabilities will be waived. Skimmer Lids Pty Ltd will not be held responsible for any injuries that may occur.



PATENTS: AUST, UK, NZ available: www.skimmerlids.com.au

USA/Canada: www.skimmercovers.com (under technical)

4PP-HOMEOWNER-2022:03

For further information

Please contact Skimmer Lids for any query. We're happy to chat! +61 7 3807 2551