

kitchens

PATTERSONS
— KITCHENS & INTERIORS —



Welcome...

Let the purchase of your new kitchen be a journey that will change the way you feel and live within your home.

Before you lies a comprehensive guide that gives more than advice on designing your dream kitchen. It goes beyond that, by extending your style into other areas within your home.

Open plan living can now be enhanced with complementary standalone furniture pieces such as sideboards, media units and coffee tables and it doesn't stop there!

Other additions such as a home office, bootroom or pantry can add value to your home and lifestyle.

Let us take you on that journey!

General Information 04-11, 204-224

Some important factors to consider when choosing your kitchen:

Lifestyle & Design.....	04
Beyond the Kitchen.....	06
Quality Ingrained.....	10
Internals.....	204
Finishes.....	206
Kitchen Ranges (at a glance).....	208
Handles.....	214
Furniture Legs.....	222
Kitchen Door Care & Maintenance.....	223

Timeless Elegance 12-63

A sophisticated and luxurious collection of timeless classics.

Aldana.....	26
Belgravia.....	16
Clonmel.....	46
Dawson.....	40
Georgia.....	48
Harborne.....	34
Jefferson.....	50
Kensington.....	52
Madison.....	58
Wakefield.....	62

Country Chic 64-103

Realise your country kitchen dream with this stylish rural collection.

Aldana.....	80
Clonmel.....	90
Dawson.....	68
Florence.....	94
Georgia.....	92
Jefferson.....	100
Kensington.....	72
Madison.....	88
Wakefield.....	96

Dramatic Overtones 104-167

Strong colours and bold textures characterise this innovative collection.

Aldana.....	120
Florence.....	108
Georgia.....	124
Harborne.....	138
Kelso & Zola Matte.....	142
Kensington.....	136
Madison.....	114
Rezana & Ferro.....	166
Strada Matte.....	160
Strada Matte & Rezana.....	164
Wakefield.....	132
Zola Matte.....	150
Zola Matte & Ferro.....	158
Zola Matte, Rezana & Ferro.....	156

Sleek Serenity 168-203

A smooth and serene collection of ergonomically designed kitchens.

Harborne.....	172
Strada Gloss & Aldana.....	198
Strada Matte.....	194
Strada Matte & Tavola.....	190
Tavola.....	188
Zola Gloss.....	178
Zola Gloss & Tavola.....	176
Zola Soft-Matte.....	184
Zola Soft-Matte & Rezana.....	182

This document is intended only as a guide and, as no picture can accurately convey colour representation it is suggested you examine our products personally before purchase. Only then can you appreciate the detail of each and every component, the finishes applied and the superior quality. If your chosen finish is not on display, we recommend that you order a sample.



Lifestyle & design



Never before has there been more opportunity to create the ultimate kitchen, based on your lifestyle. You can devise a space that directly reflects your personality and the way you choose to live your life. Whether you possess a flair for the dramatic, prefer a serene oasis or want to steep yourself in traditional comfort, your own 'personal' kitchen can be realised.

Not to be underestimated, the design of your new kitchen is one of the most important decisions you can make. A fusion of cabinet and appliance layout, feature accessories, colour combinations and a selection of finishes/textures, the design choices you implement will affect how you enjoy your kitchen for many years to come.

Beyond the kitchen

Open plan living spaces are becoming ever more popular, for the sociable, warm and open atmosphere they encourage and their multi-functional nature. Creating a fluid space which binds both rooms and people together, the kitchen becomes the focal point in the home and is the key area in the house that people are drawn to.

Our 'Beyond the Kitchen' concept allows ease of continuity between various living zones with the introduction of complementary furniture pieces such as media units, sideboards, coffee and side tables. We hope that you find plenty of inspiration throughout the brochure to help you make the perfect choice for your home and lifestyle.

COMPLEMENTARY FURNITURE



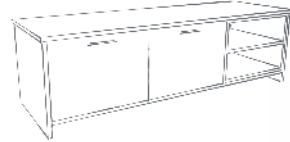
SIDEBOARDS



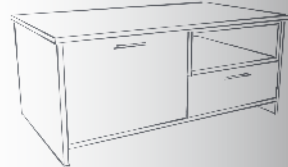
CONSOLE TABLES



SIDE TABLES



MEDIA UNITS



COFFEE TABLES



Beyond the kitchen

Traditionally the home was divided up into separate rooms, all of which had their own function. With an increase in people working from home, the home office has become an essential haven, creating the perfect working environment.

Throughout the brochure you will find fabulous examples of pantries, bootrooms and home offices. All of which combine clever functionality along with stunning creative design.

Think outside the box - think 'Beyond the Kitchen'.



Quality Ingrained

Quality excellence should be an integral aspect of any furniture you choose to purchase and something you simply expect, regardless of budget. Whether it is the construction, finish or design detail of our ranges you can be sure that high quality is our top priority. With this in mind you are free to concentrate on the look and feel of your new kitchen, confident that the quality is ingrained.



Timeless Elegance

Belonging to an era that time forgot, Timeless Elegance represents enduring sophistication and luxury with beautifully crafted kitchen furniture that will last and last. Interspersed with ornate detailing and grand features, this classic collection brings traditional elements to the fore resulting in a stylish yet comfortable kitchen space that feels like it has always been there.



SETTING THE SCENE

Add authenticity to your timeless environment with the use of subtle textures and finishes that bring out the elegant nature of your kitchen furniture. Sumptuous materials such as velvet for upholstery, marble for worktops and timber for components such as internal shelving will create a feeling of abiding comfort. Don't be afraid to inject an ornate flavour into your design by including elements such as brass handles and modern style lighting, as this will only enhance the look and feel!



BELGRAVIA

The epitome of true elegance, Belgravia brings both style and substance to your home with its ornately detailed inframe design and numerous accessories. Featuring a superb quality painted finish with visible woodgrain you can create a timeless masterpiece within your home.



- 1 Belgravia painted Deep Forest with large island which dominates the room and creates a distinctive zone between cooking and living. Worktop is Neolith Mar Del Plata.
- 2 Glass panelling cleverly floods the tall integrated larders with natural light.

Handles: K1-270 & K1-267 (See page 214).



2



1



- 1 A stunning island adorned with framed end panels.
- 2 This magnificent media wall unit is certainly a statement piece and perfectly complements the kitchen.
- 3 Elegant tall larders create an architectural feature as well as providing ample storage in this beautiful home.



- 1 Belgravia kitchen painted Slate Blue and Porcelain. Worktop is Vienna Quartz.
- 2 Detail showing four door larder and rounded mantle shelf.
- 3 Four door larder displaying internal coffee station with open shelving and storage drawer.

Handle: K1-191 (See page 217).





- 1 Quadrant barrel unit with solid oak inset trays and circular timber top.
- 2 Dresser internal featuring glass holder and bottle rack.
- 3 Dresser unit showing curved and straight cornice features and plain frames with cross rails.





1



4



5



2



3



- 1 Belgravia kitchen painted Parisian Blue and Stone. Worktop is Calacatta Porcelain.
- 2 Tall larder unit featuring top boxes, under cornice and moulded cornice.
- 3 Central island showing integrated solid oak trays and chopping boards.
- 4 Island with curved doors and moulded skirting plinth. Open wall display unit with curved doors.
- 5 Curved base door with moulded skirting plinth.

Handles: K1-192 and K1-194 (See page 217).

ALDANA

The stunning simplicity of the Aldana shaker-style door is accentuated by its narrow frame for a decidedly modern look. This door is accompanied by a host of accessories that will expand your design options to create a kitchen that meets all your expectations.

- 1 Aldana kitchen painted Porcelain and Cashmere. Island features a large breakfast bar with open shelves in Light Oak. Worktop is Silestone Lusso.
- 2 Island extends into the living space which incorporates an Aldana sideboard and media unit.

Handle: K1-278 (See page 215).





- 1 Coordinating media unit in Cashmere and Light Oak enables a cohesive muted colour scheme.
- 2 This simplistic sideboard design provides extra storage wherever you need it.



1 Aldana kitchen painted Marine and Stone. Worktops are Dekton Valterra Ultra Compact (island) and Dekton XGloss Tundra Ultra Compact (base units and dresser). Also shows beautiful end panels on the wall and base, created with pilasters and feature plinth.
 2 Dresser displaying Georgian frames with horizontal bars and acute angled cornice.

Handles: K1-195 and K1-198 (see page 217).



- 1 Walk in Pantry featuring base units and open shelves painted Stone.
- 2 Solid oak dovetail drawer with cutlery insert.
- 3 A welcoming entrance with cloak and bootroom featuring seating and storage.



1



2



3



HARBORNE

Combining the linear detailing of a handleless door with a subtle shaker frame, Harborne captures the true essence of traditional styling with a contemporary twist. Be as adventurous or as serene as you like with our multitude of amazing colours, you can create an environment that reflects your personality and lifestyle.



- 1 Harborne painted Slate Blue, Stone and Citrus Green (using our Colour Match Service, see page 209.) Integrated seating with pullout storage drawers and double larders on either side. Worktop is Dekton Nayla.
- 2 A chunky open shelf provides a practical and decorative feature to perfectly link the tall housing units on either side of the hob.





1



2



3



- 1 A perfect example of how complementary furniture can enhance an open plan living space.
- 2 Compact but beautiful freestanding and wall hung media combination, enhances the living space visually and practically.
- 3 Contemporary sideboard accentuated by a dark but soft Slate Blue, the perfect partner for its brass legs.



1



2

- 1 Harborne painted Shell and Stone is used to create this contemporary living space inspired by Scandinavian design with the simplistic tonal trends that come along with it. Worktop is Neolith Blanco Carrara.
- 2 The living area is furnished with a Harborne sideboard and media unit painted Shell. The media unit incorporates a Light Oak open shelf which reflects the wall units in the kitchen.
- 3 The alcove features a fitted open shelf that sits perfectly above the freestanding console table painted Shell with a Light Oak shelf.



3





DAWSON

Dawson's slim frame, sloped internal profile and v-groove detailing offers a unique design that can adapt to suit both contemporary and traditional styling. Featured here using mock inframe, glazed doors and open shelves to create lots of detail and interesting focal points. Dawson is available in six stunning colours that will easily bring your dream kitchen to life.



- 1 Dawson Indigo kitchen featuring a long window seat with storage, spice rack fronted extractor unit and open shelves with stainless steel rail details. Units are framed with universal moulding to create a traditional inframe look. Worktop is Dekton Bergen.

Handle: K1-259 (See page 214).





- 1 Glazed dresser unit with open shelves.
- 2 Dawson utility features a raised washing machine with handy pullout shelf below. Other features include tall broom cupboards, laundry rail and wall unit with open shelves and stainless steel rail.





- 1 Dawson Kitchen in Light Grey is complemented with a Solid Oak timber worktop and open shelves.
- 2 The island features wide pan drawers, an open shelf in Light Oak and the worktop is Silestone Et Statuario.
- 3 Tall larder units with single glazed feature doors.
- 4 Wide sideboard with open shelves in Light Oak.

Handles: K1-272 & K1-269
(See page 214).

CLONMEL

Characterised by its wide frame and deep profile, this chunky shaker-style door makes a robust statement with its formidable appearance. Whether you choose to have your kitchen painted, stained, or both, Clonmel is truly timeless and is enhanced by the inclusion of its many exclusive accessories.



- 1 Clonmel kitchen painted Light Grey and stained Carbon. Worktop is Dekton XGloss Natura 18 Ultra Compact. Also shows island with open shelving detail and tall oven housing.
- 2 Freestanding dresser including plain frames complete with Flemish glass.

Handles: K1-214 and K1-208 (See page 220).

GEORGIA

Offering a huge number of options when it comes to colour, the Georgia kitchen, featuring a shaker-style door with smooth painted finish, is ideal for those who like to experiment! Include some feature components such as curved doors, a plate rack or classic overmantle to create the ultimate kitchen space.



2

- 1 Georgia kitchen painted Stone and Porcelain. Worktop is Marble Carrara. Also shows open wall unit with plate rack, worktop dresser with plain glazed frames and feature overmantle.
- 2 Unique island design incorporating curved doors, plain glazed frames, chunky pilasters and under plinth.

Handles: K1-156 and K1-159 (See pages 218).



1



JEFFERSON

The quintessentially traditional design of the Jefferson door, with its raised centre panel and defined grain painted finish, exudes charm and sophistication. Choose from an extensive selection of both standard and made to order accessories to devise a kitchen that is totally unique and special.



- 1 Jefferson kitchen painted Light Grey and Gun Metal Grey. Worktop is Honed Marble.
- 2 Pastry bench with solid oak worktop and slatted shelf.
- 3 Worktop dresser featuring Edwardian carved frames.

Handle: K1-168 (See pages 214).

KENSINGTON

The innovative Kensington design with sloped internal profile and prominent v-grooves offers a contemporary twist on the original shaker style. Available in numerous colours, the visible grain on this versatile door provides a look of true authenticity.

- 1 Kensington Porcelain featuring tall larder units and central island. Worktop is Silestone Snowy Ibiza.
- 2 Stylish freestanding sideboard in the dining area with brushed chrome legs.

Handle: K1-279 (See page 215).



1



2





1 Kensington kitchen in Light Grey. Worktop is Bardiglio Nuvolato Marble. Also shows island with open shelving and back run incorporating tall plain glazed frames.

Handles: K1-157 and K1-160 (See page 220).





1 Kensington kitchen in Dust Grey. Worktop is Bianco Carrara Marble. Also shows window bench seating, slim mantle shelf design and modern square cornice.

Handle: K1-180 (See page 218).





MADISON

The layout of this Madison kitchen is designed for modern living. The warmth of rich Light Oak and Ivory evokes an inviting feeling and special designer features such as open shelving offer an abundance of storage space.

- 1 Madison kitchen in Light Oak and painted Ivory featuring a working overmantle and open shelves in Light Oak to complement the elegant island. Worktops are Silestone Et Calacatta Gold. Chunky pilasters, moulded skirting plinth and traditional cornice combine to add opulence to this classic kitchen.
- 2 This magnificent dresser/media unit is the perfect solution to complete this traditionally styled, open plan living space.

Handles: K1-222 and K1-224 (See page 219).





- 1 Madison kitchen painted Cashmere and Graphite. Worktop is Silestone White Storm Quartz. Also shows tall unit with glazed top boxes. Island with feature door end panel, moulded skirting plinth and solid oak inset trays with chopping boards.
- 2 Simple flat canopy design flanked by double panel feature doors.

Handles: K1-156 and K1-159 (See page 218).

WAKEFIELD

The internal bead profile used in the Wakefield door adds extra depth and contour to your overall kitchen design when combined with any of the broad number of accessories on offer in this stunning range. Take advantage of the extensive painted colour palette which allows you to mix and match with total freedom.

- 1 Wakefield kitchen painted Mussel and Parisian Blue. Worktop on back run is Silestone Blanco Maple Quartz and solid oak on island. Also shows simple overmantle design and island with feature door end panel.
- 2 Dresser with Georgian frames and oak open shelving.

Handles: K1-169 and K1-172 (See pages 217 & 218).



Country Chic

With a varied selection of warm furnishings and punchy painted finishes, Country Chic offers a taste of the traditional with an edge. Retaining all the rudimentary design elements of the much loved rural kitchen, our Country Chic collection adds a contemporary twist with the inclusion of daring colour combinations and unique accessories. Revel in this fresh new look at a time-honoured favourite.



SETTING THE SCENE

Many people aspire to owning a home in the countryside. This may only be a fantasy for some, but it is possible to experience a taste of the country no matter where you live. Introduce a rustic feel to your home with the inclusion of popular country favourites like T&G panelling, visible ceiling beams and natural materials such as timber, slate or stone. Add a chic touch with contemporary accents like vibrant colour mixes and innovative cabinet configurations and live the ultimate rural dream.





DAWSON

Dawson lends itself well to this rustic shabby chic decor. Details such as the sloped internal profile, v-groove and smooth finish contrast perfectly with this eclectic mix of rough timber and wall finishes. A traditional pantry designed with open shelves and wicker baskets, adds a practical as well as decorative element to this cosy family home.

- 1 Dawson Kitchen in Porcelain and Cashmere featuring open shelves and walk in pantry with wicker baskets. Worktops are Consentino Colonial White and Solid Oak Timber.
- 2 The dining area features a sideboard in Cashmere to perfectly complement the kitchen.

Handles: K1-256 and K1-258 (See page 219).



2



- 1 A wide sideboard in Cashmere offers ample storage in the dining area and complements the kitchen perfectly.
- 2 Walk-in pantry featuring open shelves and pullout wicker baskets.



KENSINGTON

Show your country fun side with a Kensington shaker style kitchen incorporating door and accessory combinations suitable for any size of space. The door's sloped inner profile, v-groove and grain finish means it is perfect for a busy family lifestyle.



- 1 A spacious Kensington kitchen in Indigo featuring open shelves with plate rack and large island with breakfast bar. Worktops are Dekton Aura15.
- 2 Tall cabinets with integrated fridge and freezer.

Handles: K1-255 and K1-257 (See page 214).





- 1 Traditional walk-in pantry featuring open shelves with decorative brackets.
- 2 Cosy dining area makes the perfect space for family living and entertaining friends.



- 1 Kensington in Cashmere creates a warm cosy feel to this compact kitchen which opens up onto the patio for outside dining. Worktop is solid oak timber.
- 2 A tall dresser unit creates the perfect larder. Extra storage is provided with decorative open shelves.

Handle: K1-259 (See page 214).



2



1



- 1 Adding an underplinth below the doors, enhances the overall streamlined design of this shaker range.
- 2 A beautiful console table complements the kitchen providing decorative and practical storage.

Handle: K1-259 (See page 214).

ALDANA

A kitchen that ideally lends itself to a rustic look, Aldana's slim frame accommodates the hallmarks of country living perfectly. Whether you choose a more traditional approach with T&G panelling, earthy colours and pastoral style accessories or decide to go a more modern route with dynamic colour combinations and designer styling, your country kitchen will evoke that comforting, lived in feel.

- 1 Use T&G panelling to great effect by bringing it through to spaces that extend off your kitchen. Shown here is an entrance way featuring bench seating and T&G panels.
- 2 Aldana kitchen painted Viridian. Worktop is Dekton Entzo Ultra Compact. Also shows use of universal pilaster to create a 'framed' look and plain glazed frames on worktop dressers and on top of far larder unit.

Handle: K1-210 (See page 221).





1



2

- 1 Island with solid oak inset chopping boards.
- 2 Designer canopy with oversized, shaped corbels sits majestically above the central island that boasts convenient open shelving.



- 1 Show your fun side with this Aldana kitchen painted pale yellow (using our Colour Match Service, see page 209) and Dust Grey with Brilliant White mock inframe. Worktops are Dekton Valterra Ultra Compact (back run) and Silestone Kensho Quartz (island). Also shows open display wall shelving with decorative brackets. Island is embellished with feature end panels.
- 2 For a different look match your mock inframe to your door. Here we have used all Dust Grey. You can also introduce a funky floor design using a multi coloured geometric pattern.

Handle: K1-202 (See page 217).



- 1 Feature plinth used on the end panels of the island create a clever decorative element.
- 2 A stunning Aldana media unit painted Dust Grey is the perfect addition to this open plan living space.



MADISON

Effortlessly chic and stylish, the Madison shaker door with v-groove makes an impressive statement with its simple detailing and selection of accompanying designer accessories. Classic in both function and form Madison will fit happily into any sized space to bring you a kitchen that works hard and looks fabulous.

- 1 Madison kitchen painted Porcelain and Marine is used to create a modern twist to a traditional setting. Window seats make a stunning and practical storage solution. Worktop is Dekton Kovik.
- 2 The T&G feature on the compact island with breakfast bar and open shelves in Light Oak is reflected on the wall run to enhance the simplistic styling of the Porcelain units.
- 3 Sideboard featuring drawerpack and moulded skirting plinth.

Handles: K1-256 and K1-258 (See page 219).



CLONMEL

Clonmel offers a touch of class and exudes quality with its oak construction, chunky appearance and range of accompanying accessories. A perfect choice for a country setting.

- 1 Clonmel kitchen painted Pantry Blue and Gun Metal Grey. Worktop is Silestone Eternal Calacatta Gold Quartz. Also shows island with solid oak slatted open shelving, chunky pilasters to create a 'framed' look and feature end panels that also appear at the end of the base units.
- 2 Dresser with mock inframe construction and designer storage and display area including oak shelving and wine rack.
- 3 A bootroom is a practical addition to any rural dwelling, so why not make it coordinate with your kitchen. Shown here in Pantry Blue with cushioned seating and pullout storage drawers.

Handles: K1-212 and K1-215 (See page 216).





GEORGIA

Open to a host of colour combinations this is your chance to create a rural kitchen with a difference. Georgia's smooth finish and traditional shaker style provide an impeccable canvas to which you can apply elements that reflect your true personality. Regardless of your choice of decor, appliances or colour Georgia adapts itself entirely, resulting in a country kitchen paradise.



- 1 Rustic style brass handles and knobs with horizontal detailing complement the linear design of the kitchen.
- 2 Create your own luxury oak larder featuring internal drawers and spice rack.
- 3 Georgia kitchen painted Pantry Blue. Worktop is Statuario Maximus Quartz. Also shows oxidised brass strips that form bespoke designer backsplash to tie in with the look of the handles.

Handles: K1-221 and K1-223 (See page 219).

FLORENCE

Rural design staples such as open ceiling beams, natural floor materials and traditional style windows set the scene here for the Florence country kitchen. No matter what size the space is, you can devise a kitchen with real flair by incorporating key accessories such as an overmantle, pastry bench, T&G panelling and solid oak inset trays.

1 Florence kitchen painted Dust Grey and Porcelain. Worktops are solid oak (island) and Silestone Kensho Quartz (back run). Also shows island/pastry bench and solid oak inset tray and spice drawer.

Handles: K1-169 and K1-172 (See pages 217 & 218).



1 Florence kitchen painted Graphite and Light Grey. Worktop is solid oak. Also shows island with overhang adorned with decorative brackets and worktop dresser with glazed frames.
2 Traditional beaded panels grace either end of the island. Also shows solid oak inset tray and spice drawer.

Handles: K1-168 and K1-171 (See pages 214 & 216).



WAKEFIELD

This traditional door with beaded centre panel finds its place in a modern setting with the use of a simple linear cornice which reflects the architecture. The subtle natural colour of Cardamom is complemented with the Light Oak island, creating a warmth to this bright contemporary space.



1 Wakefield painted Cardamom with Light Oak Island. Featuring tall larder units with glazed top boxes. The island is given prominence with its chunky modular pilasters and open shelf pastry bench. Worktop is Dekton Fossil.

Handles: K1-271 and K1-268 (See page 219).





1 The open plan living space complements the kitchen with a coffee table and wide media unit in Cardamom with contrasting Light Oak open shelves.



JEFFERSON

The ornately constructed Jefferson door with its moulded, raised centre panel will bring your rural space to a different level. Available in oak or with any painted finish and offering a large selection of specially appointed accessories, the number of design possibilities are endless with this classically elegant kitchen.

1



- 1 Jefferson in Light Oak and painted Ivory combines lots of rich tones and textures creating a feeling of cosiness and homeliness. Worktops are Dekton Milar.
- 2 Dresser with solid oak wine glass holder and wine rack.
- 3 Extra storage and seating are cleverly incorporated with cushioned window seats.

Handles: K1-214 and K1-218 (See page 220).

2



3





1 Jefferson kitchen painted Mussel. Worktop is Silestone Eternal Calacatta Gold Quartz. Shows interesting island design with curved doors encompassing a wine cooler.

Handle: K1-86 (See page 216).

Dramatic Overtones

Strong colours, bold textures and innovative styling are key features of the Dramatic Overtones collection. Designed for those with an adventurous spirit, these kitchens will make an audacious lifestyle statement. The use of compelling and unique finishes including a weathered metal look and textured timbers provide the perfect canvas to showcase these contemporary door styles and accessories.



SETTING THE SCENE

When it comes to Dramatic Overtones there is no holding back. It is all about making a daring statement and powerful colours are the key to ensuring your dramatic kitchen is a success. Strong blues, greens and greys are prevalent and when combined with finishes such as brass and bold textures such as stained ash or cross scratched oak you will create a kitchen space that is certain to provoke the senses.





FLORENCE

When a room is flooded with natural light it gives you the opportunity to be as bold and dramatic as you dare. The classic style of Florence with its smooth finish and beaded profile is dramatically combined with dark olive walls and brass accents to create a rich and vibrant living space.



1 Florence kitchen painted Slate Blue features a window seat providing an area to relax in addition to extra storage. Worktop is SapienStone Arabescato.

Handles: K1-273 and K1-277 (See page 215).

- 1 Window seats are the perfect addition to any home. Combined here beside patio doors to really make the living space extend into the garden.
- 2 Glazed doors add a point of interest to the island.
- 3 Using the same style as the kitchen a small home office is placed in the window nook, providing a light and airy place to work.



2



3



2



3



1



4

- 1 Florence kitchen painted Viridian and Graphite. Worktop is Moorland Fog Quartz on base units and solid oak on island. Island features double door end panel and under plinth.
- 2 Mantle shelf supported by ornate corbels.
- 3 Dresser with oak open shelving flanked by door/drawer combination. Also shows application of pilasters throughout the kitchen design for an overall freestanding look.
- 4 Spice drawer and solid oak inset tray combination.

Handles: K1-192 and K1-194 (See page 217).

MADISON

This stunning injection of warm Vintage Pink complements the Parched Oak timber while contrasting with the cool tones of Slate Blue. Madison's simplistic shaker door with timber grain finish offers you endless possibilities to create your perfect statement kitchen and living space.



1 Madison kitchen painted Vintage Pink and Slate Blue. Features extra tall larder units with pullout drawers below. Open shelves in Parched Oak reflect the dramatic architectural features of the skylight. Worktop is Dekton Aura.

Handles: K1-263 and K1-266 (See page 214).



1



1 A combination of Vinatge Pink and Parched Oak flatter the linear design of these furniture pieces providing a warm sophisticated look in the living area.





1

- 1 Madison Kitchen painted Marine and Light Teal. Worktop is Silestone Iconic White Quartz.
- 2 Maximise your kitchen space by including a recessed tall appliance housing unit.
- 3 Dresser top with Georgian frames.

Handles: K1-155 and K1-158 (See page 219).



2



3



ALDANA

The sophistication of the Aldana door is given a dynamic injection of colour to create a decidedly modern look. Innovative design features and uncomplicated styling emphasise the clean lines of this versatile door and result in a dramatic contemporary living space.



1 Aldana kitchen painted Graphite. Worktop is Dekton Kelya Ultra Compact.
Handles: K1-197 and K1-200 (See page 215).



- 1 Island displaying double door end panel framed with under plinth and chunky pilasters.
- 2 An Aldana media unit in Graphite perfectly completes the furnishing requirements of this industrial living space.

1





GEORGIA

Offering a selection of on-trend colours the Georgia kitchen is a shaker-style door featuring a smooth painted finish and is ideal for those who like to experiment! A truly versatile design that lends itself equally to a wide range of styles from modern industrial to cosy traditional.



- 1 Georgia kitchen painted Marine. Worktops are Neolith Calacatta CO1R. Features include Light Oak open shelving and a multi functional island, perfect for entertaining and casual dining.
- 2 A Georgia media unit silhouettes the industrial brick wall in the living space.

Handle: K1-261 and K1-264 (See page 214).





- 1 Tall larder unit with glazed top boxes. Replacing the standard glazing with ribbed glass adds to the industrial look and feel.
- 2 Media unit painted Marine with contrasting Parched Oak open shelf perfectly complements the detailing in the kitchen.





- 1 Georgia painted Deep Forest with antique copper handles, combines dramatic styling with the practicalities of family living. Worktop is Silestone Pearl Jasmine
- 2 Storage solutions at their best, the window seating and sideboard prove popular in many busy homes.
- 3 Features such as the curved doors and the oak pullout trays with spice drawers give the kitchen a touch of drama.

Handle: K1-262 and K1-265 (See page 219).





1 Georgia kitchen painted Airforce. Worktop is Silestone Eternal Statuario Quartz. Also shows open shelving unit in Parched Oak and mantle shelf.

2 Unit featuring display area with Parched Oak back panel and shelving painted Airforce.

3 Island with integrated open shelving.

Handle: K1-225 (See page 220).



2



3

WAKEFIELD

Often seen in a more traditional setting, Wakefield is successfully used here to add a more eclectic look and feel to this contemporary open plan living space. Brass and orange accessories effectively contrast with the rich, on trend Marine colour. Open shelving features heavily to add practical and decorative storage and gives this modern living space a sense of warmth and homeliness.

- 1 Wakefield kitchen painted Marine creates a dramatic element to this modern rural home. Worktops are Caesarstone Supernatural 5143 White Attica.
- 2 Stunning dining area furnished with a complementary sideboard painted Marine.

Handle: K1-277 (See page 215).





1 This sideboard painted Marine shows off the beautiful grain finish and beaded profile of the Wakefield door.
 2 The multilevel island is designed to effectively divide and reflect the open plan architecture and create functional spaces.



KENSINGTON

Kensington's versatility lends itself well to many contemporary settings and this barn style architecture proves that point. A bold statement which dramatically combines Kensington Graphite with a backdrop of rustic wall finishes in earthy tones. Natural light reflects off the vast ceiling to balance the dark elements of this amazing living space.



- 1 Kensington kitchen in Graphite featuring simple linear styling. Worktop is Dekton Sirocco.
- 2 A magnificent island divides the various living zones of this open plan space.
- 3 Coffee table in Graphite complements the kitchen.

Handles: K1-279 (See page 215)

HARBORNE

This eclectic Harborne kitchen with bold colours and quirky architecture is certainly a statement space. The white walls are contrasted with polished concrete floors and complementary furniture pieces add the finishing touches that create a seamless flow from the kitchen to the living room.



- 1 Harborne painted Graphite and Chicory Red (using our Colour Match Service, see page 209). Worktop is Neolith Nero Marquina.
- 2 The island's wide pan drawers add to the linear theme of this kitchen. Chicory Red is contrasted with open shelves in Graphite.





- 1 Customise your furniture 'beyond the kitchen' to create a semi-fitted modern dresser. Plenty of personality can also be injected into freestanding pieces by using contrasting colours as shown here on the coffee table and sideboard.
- 2 A stunning Harborne sideboard in Chicory Red (Colour Match Service, see page 209) with open shelves in Graphite and quirky brass legs.



KELSO & ZOLA MATTE

City living at its best in this contemporary apartment which features the dramatic ash grain of Kelso stained Pacific Blue paired with the contrasting smooth finish of Zola Matte painted Marine. This handleless design is completed with a handleless rail painted Marine.



- 1 Kelso stained Pacific Blue is framed perfectly with Zola Matte and Handleless rail both painted Marine. Worktop is Caesarstone 4011 Cloudburst Concrete.
- 2 Simply styled sideboard in Zola Matte Marine with contrasting open shelves in Kelso Pacific Blue.

Furniture handles: K1-206 (See page 221).



2



1



2



3

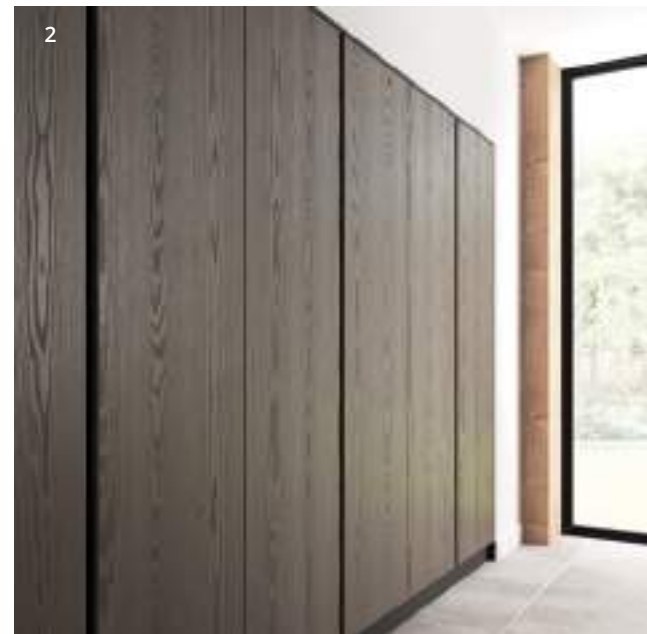


- 1 Kelso's stained Ash timber is best shown off in these tall larder doors.
- 2 This stunning sideboard has dual functions as a media unit and storage solution in this small apartment.
- 3 A side table in Zola Matte painted Marine and Kelso stained Pacific Blue adds the finishing touch to this quirky living space.

Furniture handles: K1-206 (See page 221).



- 1 A magnificent kitchen featuring Kelso stained Truffle Grey contrasted with Zola Matte painted Graphite. Worktop is Dekton Laos.
- 2 Floating Island in Zola Matte Graphite features a handleless aluminium rail extending around all sides to create a seamless linear design. A solid Oak breakfast bar complements the architectural support beams.



- 1 A Zola Matte sideboard painted Graphite takes pride of place in the dining area.
- 2 Detail of the Ash timber grain of Kelso stained Truffle Grey. End Panels and plinth are Zola Matte painted Graphite. Handleless rail also painted Graphite.

Handles: K1-204 (See page 215).
Furniture legs: Brushed Chrome (See page 222).



ZOLA MATTE

A stunning open-plan living space with bold decor choices showcases this stunning Zola Matte kitchen. The smooth painted finish of the doors seen here in dramatic Slate Blue, creates the perfect base for adding rich complementary colours. The design possibilities are truly endless!



1 Zola Matte painted Slate Blue is showcased in this large open plan living space. Worktops are Dekton Fossil. The smooth matte finish is contrasted with the 3D texture of the slatted wooden wall feature and the rich, warm copper tones used to style the room.

Handle: K1-280 (See page 221).





- 1 Quirky double-sided sideboard with open shelves is used to partition the living area from the kitchen.
- 2 The living area is further complemented with a contemporary media unit and sits perfectly with the metal frame shelving unit.

Furniture Legs: Brushed Chrome (See page 222).





1 Zola Matte painted Zingy Orange (using our Colour Match Service, see page 209), Dust Grey and Graphite. Worktop is Titanium composite surface. Achieve a framed look for this slab door by including a moulding surround. LED strip lighting above and below wall units can add further drama to your kitchen design.

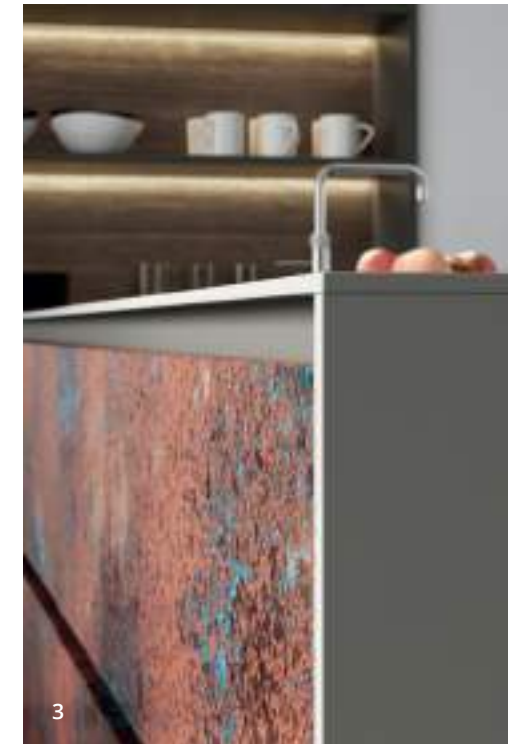
Handle: K1-201 (See page 215).

ZOLA MATTE, REZANA & FERRO

Three door finishes that were born to live together, the Zola, Rezana and Ferro ranges celebrate their simple construction by sporting a spectacular selection of finishes. Rezana, with its cross scratched timber finish is the perfect complement to Zola Matte and Ferro's unique oxidised copper look, resulting in a match made in heaven.

- 1 Island features Ferro in Oxidized Copper and tall oven housing features Rezana in Espresso Oak. Worktop is Silestone Cemento Spa Quartz.
- 2 Larder with Zola Matte painted Lava and featuring open shelving in Rezana Espresso Oak.
- 3 Detail showing handleless rail system painted Lava with Ferro drawer fronts in Oxidized Copper.
- 4 Detail showing brushed, cross scratched finish of the Rezana in Espresso Oak.
- 5 Rezana panels used to create a dramatic feature wall.

Handle: K1-158 (See page 219).



ZOLA MATTE & FERRO

Push the limits of your imagination with the combined appeal of Zola Matte and Ferro. Shown here displaying a mesmerising colour mix of smooth brass and Marine which complements perfectly with the exposed brick walls and dark timber elements.

- 1 Innovatively designed storage unit for displaying books and household items, also used as a doorway surround.
- 2 Zola Matte painted Marine and Ferro painted Brass. Worktop is Silestone Carbono Quartz.
- 3 Handleless rail system painted Graphite provides a clean, streamlined look.

Handle: K1-223 (see page 219).



STRADA MATTE

Strada's cutting-edge door with integrated J-handle perfectly accommodates a blend of daring tone-on-tone styling. A kitchen designed for those who appreciate colour, the dark Marine is contrasted with vibrant, rich and earthy tones to create an eclectic and luxuriously styled room.

1 Strada Matte Marine is styled beautifully in this stunning city apartment where the dramatic colour tones are contrasted with the natural timbers of the herringbone floor. Worktops are Dekton Vera.





1 Continuing with the tone-on-tone theme the living space is furnished with a Strada Matte media unit which is detailed with antique brass legs.

Furniture Legs: Antique Brass
(See page 222).

STRADA MATTE & REZANA

Strada Matte's smooth finish lends itself so well to being partnered with textured and dramatic elements like rough timber and concrete. This contemporary kitchen sees it contrasted with the rustic cross scratched oak of Rezana.



1 Strada Matte painted Slate Blue with feature wall units in Rezana stained Espresso. Worktop is Silestone Nebula Lyra.

REZANA & FERRO

A true representation of the urban dream, this mix of Rezana's rich real wood veneer and Ferro's cool iron paint finish work to create an exciting habitat for lovers of the 'industrial' look. This minimalist kitchen loft design is offset nicely by signatures of the industrial style such as exposed brickwork and piping and is given a touch of vibrancy with the inclusion of an interior herb garden.



1



2



3

- 1 Rezana stained Carbon Oak and Ferro painted Iron. Worktop is Dekton Orix Ultra Compact. Also shows custom designed vessel to hold potted herbs.
- 2 Pan drawers showing solid oak secret cutlery drawer with dovetail joints and inconspicuously positioned matte black handles.
- 3 The iron finish of Ferro sits comfortably alongside Rezana's dark timber.

Handle: K1-234 (See page 221).

Sleek Serenity

Smooth textures and subdued tones capture the essence of the Sleek Serenity collection. Created without compromise, these kitchens provide a dream setting for those who appreciate the benefits and beauty of ergonomic design. Usually occupying a bright and airy space and using sleek finishes and minimalist features, we show what is needed to build your modern paradise.



SETTING THE SCENE

Capture a sleek and serene feeling with the use of soothing tones and textures that will help to create your home's special sanctuary. The use of a mellow colour palette including greys, ivory and white is key and when combined with an abundance of space and light will result in a kitchen that will bring out your inner calm. Incorporate natural materials such as timber, stone or marble to establish a sense of contrast and balance to your design.



HARBORNE

A modern handleless Harborne kitchen provides a statement contrast with the dark walls in this urban townhouse, mixing original features such as coving and fireplace with the linear design of the kitchen, to produce a uniquely serene living space.



- 1 This Harborne kitchen painted Light Grey makes a feature of the original fireplace by adding base units in the alcoves and adding black metal open shelves above to create a point of interest. Worktops are Dekton Splendor and solid oak timber.
- 2 Tall units provide ample storage and cleverly house the fridge and freezer so as to retain a sleek and linear look.



1

- 1 Harborne's sleek linear design is accentuated here with the use of wide pan drawers throughout the island and in the chimney breast alcoves.
- 2 This handleless door with its shallow recessed centre panel combine the simplicity of a slab door with the detailing of a shaker, making it extremely versatile.



2



ZOLA GLOSS & TAVOLA

A stunning example of what Sleek Serenity really means, the combined features of the Zola Gloss and Tavola doors bring beauty and functionality together effortlessly. A sense of balance is achieved with contrasting colours and finishes and an open plan room design allows for plenty of free movement around the kitchen.



- 1 Zola Gloss in Dust Grey and Cashmere with Tavola stained Carbon. Handleless rail system painted Dust Grey is used for a clutter-free look. Worktop is Silestone Marengo Quartz.
- 2 The Carbon stain used on the Tavola door accentuates its unique horizontal grain.



1

- 1 Zola Gloss in White and Light Grey. Worktops are White Marble and Solid Oak. Also shows dual level island creating ample seating space.
- 2 Bespoke designer storage and display unit.

Handle: K1-164 (See page 217).



2



1 Zola Gloss in Porcelain and Graphite. Worktops are Silestone Lyra Quartz (back run) and Silestone Negro Anubis Quartz (island). Also shows handleless rail system with aluminium finish and designer breakfast bar.



2 Zola Gloss in Dust Grey. Introducing a fusion of textures such as timber and brick to your gloss kitchen adds creative variation to your overall design. Worktop is Silestone Snowy Ibiza Quartz.

Handle: K1-147 (See page 218).



ZOLA SOFT-MATTE & REZANA

The adaptability of Zola's slab design allows for a myriad of possibilities when it comes to devising your serene kitchen. Available in a Gloss, Soft-Matte or Matte finish, you can achieve a sleek and spacious looking kitchen through a choice of muted colours and clever design layout.



- 1 Zola Soft-Matte in Porcelain is contrasted with Rezana Weathered Silver throughout this Urban apartment with its compact kitchen and home office. Kitchen worktop is Corian Neutral Aggregate.
- 2 Home office in Porcelain features a pullout filing drawer, open shelves and desktop are Rezana Weathered Silver.
- 3 Compact sink area with decorative timber shelf.

Handles: K1-274 and K1-282 (See page 215).



- 1 Zola Soft-Matte Indigo and White. Worktop is custom made concrete. The mood provoking Indigo cabinets with cool concrete slab contrast beautifully against the crisp White cabinets.
- 2 Handleless aluminium rail system dispenses the need for handles and can be painted in any of our 26 standard colours.





- 1 Zola Soft-Matte Light Grey and Graphite. Worktops are Silestone Lagoon Quartz (back run) and Silestone Eternal Emperador Quartz (island). Also shows handleless rail system with aluminium finish.
- 2 A Zola Soft-Matte sideboard in Graphite with push to open doors and drawers, adds another focal point in this contemporary living space.

Furniture Legs: Brushed Chrome (See page 222).

TAVOLA

Tavola in real wood veneer brings a trio of complementary finishes together in this rectilinear kitchen design. Floor to ceiling units are cleverly used to maximise storage capacity and extensive open shelving creates a feeling of spaciousness as well as offering a place for displaying cherished items. The inclusion of a compact central island provides a useful eating and food preparation area.



- 1 Tavola painted Shell and Dust Grey and stained Weathered Silver oak. Worktops are Pietra Grey Quartz (island) and Fresh Concrete Quartz (back kitchen run and low level units).
- 2 Low level cabinets and floating open shelving create a focal point in the living area.
- 3 Tall corner unit with integrated open shelving stained Weathered Silver oak.
- 4 Compact island with raised breakfast bar shelf and cubby hole storage.

Handles: K1-181 and K1-188 (See page 218).

STRADA MATTE & TAVOLA

The uncomplicated pairing of the Strada and Tavola doors really excels when it comes to the smaller kitchen, providing a clean and orderly environment. Both ranges offer a large number of accompanying accessories that are easily adaptable so that you can devise specialised features that fit your particular space.



1 Strada Matte painted Lava and Tavola stained Carbon Oak. Worktop is Tundra Grey Marble. The horizontal grain of the Tavola cabinets helps elongate the look of the kitchen and the island has been custom made to fit its unique shape.

Handle: K1-248 (See page 221).



1

1 This urban office retreat helps maintain the feel of more space by replicating the earthy two tone finishes of silky smooth Strada painted Lava and the rich horizontal grain in Tavola Carbon Oak to make the two spaces feel like one.



1





- 1 Strada Matte painted Light Grey (wall and base units) and Dust Grey (island). Worktop is Boston Concrete. Traditional meets modern with ornately styled home decor sitting harmoniously alongside contemporary kitchen cabinetry.
- 2 Graphite coffee table with angular brushed chrome legs complement the dark tactile feel on the unit.
- 3 Wall hung contemporary media unit painted Dust Grey and Graphite features open shelves and spot light.



1



- 1 Strada Matte painted Graphite. Worktop is Silestone Iconic White Quartz.
- 2 Strada Matte painted Porcelain. Worktop is Silver Grey composite surface. Also shows curved pilasters on the island and the main kitchen. Dark timber flooring creates a pleasing contrast.



2



STRADA GLOSS

Ideally suited to contemporary urban living Strada shows its versatility by offering numerous accessories that can be used to develop your own unique look. Whether you appreciate the softness of curves or prefer simple straight lines Strada Gloss has just what you are looking for.

- 1 Strada Gloss in White and Aldana painted vivid green (using our Colour Match Service, see page 209). The Aldana freestanding larder unit with painted ash grain finish makes itself at home beside Strada's gloss cabinets. Worktop is Dekton Keon Ultra Compact.

Handle: K1-205 (See page 217).



- 1 In this home office, located on the mezzanine floor, the natural warm colour palette provides a calming influence. The Strada Gloss Light Grey finish on the cabinetry reflects the abundance of light from the window. Plenty of storage means it remains clutter free. All of this, will no doubt get your creative juices flowing.
- 2 Strada Gloss kitchen in Light Grey features recessed tall appliance housing units, wall units with letterbox frames and a floating larder unit. Worktop is Corian Domino Terrazzo.
- 3 External feature posts on the island allow for the continuous flow of the Strada J-handle below the worktop.





1

1 This contemporary Strada Gloss kitchen in Dust Grey and Light Grey island features a recessed tall appliance housing unit and waterfall worktops in Eternal Calacatta Gold Quartz.



1



2

1 Strada Gloss in Cashmere. Worktop is Belgium Bluestone Limestone. Island features plinth strip lighting for the ultimate designer look.
2 Detail showing open curved door with integrated J-handle exposing colour matched internal shelving.

Internals

Add a luxurious dimension to your kitchen with the inclusion of solid oak internal storage. Ranging from cutlery inserts and spice drawers to larger pantry units and larders, you can completely transform the way your kitchen operates by creating organised areas that allow you to locate everything you need easily.

- 1 Larder unit with wine glass holder, wine rack, and specialised scalloped edge drawers that allow you to view contents easily.
- 2 Four door worktop larder featuring made to order coffee station with cup rail, unique shelving design and storage drawer for holding coffee pods.
- 3 Dresser featuring internal bar with wine glass holder, wine rack and antique mirrored glass back panel.

FEATURE UNITS

DOVETAIL DRAWERS & INSERTS



This tray set features a handy spice drawer with dovetailed construction above a framed solid oak tray.



Bespoke cutlery insert trays will organise your utensils to ensure everything you need is at hand.



Deep pan drawers allow you to arrange pots and pans so that they are readily accessible.



1



2



3

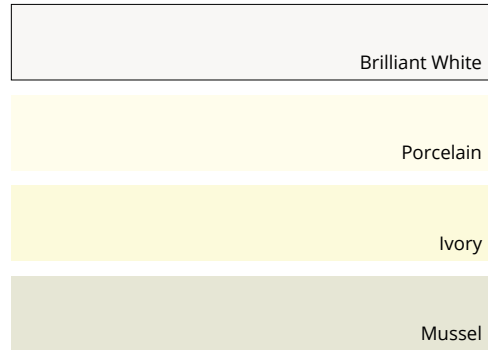
Finishes

Whether you opt for painted or stained we have a wide selection of colours and finishes to offer, with a view to designing your ultimate kitchen. As well as having our standard painted and stained finishes we also use specialised techniques to produce a unique range of metal paints that when used as a focal feature will set your kitchen design well apart from the rest.

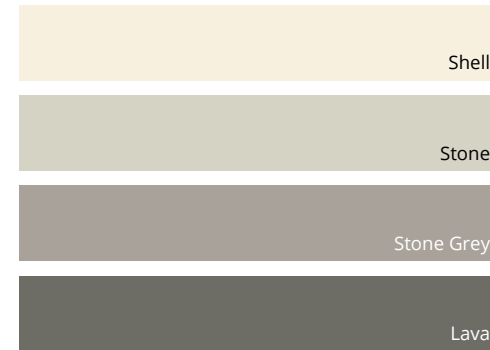


STANDARD PAINT PALETTE PTO

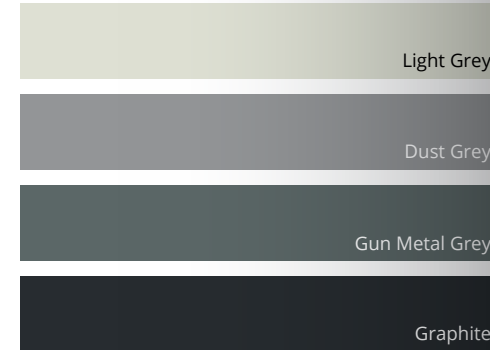
Whites/Creams



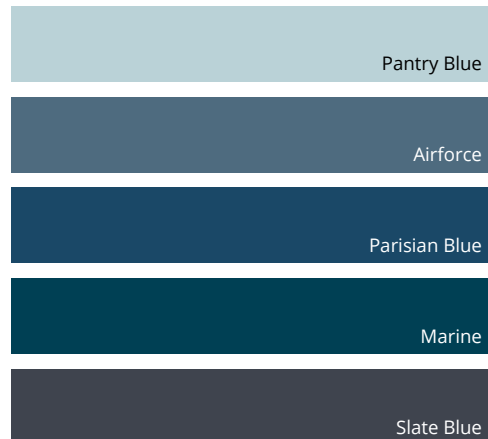
Beiges



Greys



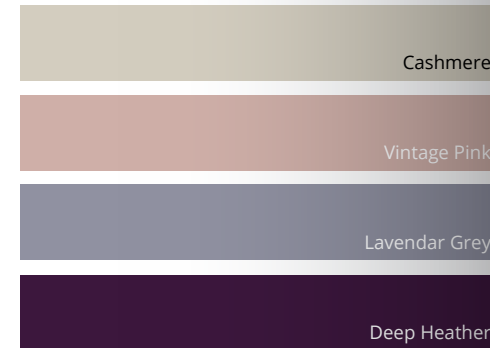
Blues



Greens

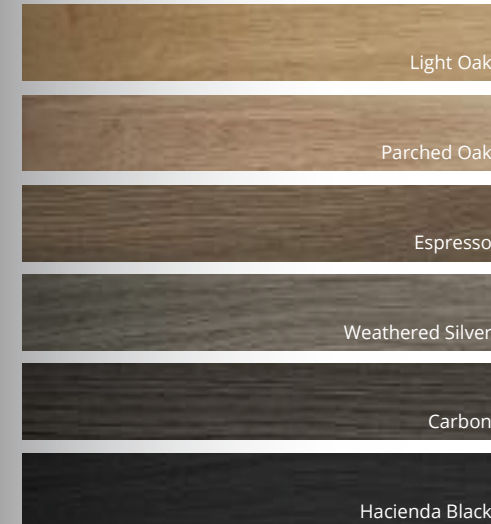


Pinks/Purples



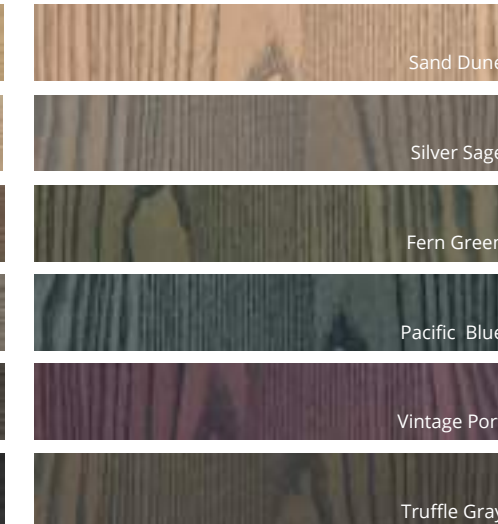
Standard paint colours can be applied to: Aldana, Belgravia, Clonmel, Florence, Georgia, Harborne, Jefferson, Madison, Strada Matte, Tavola, Wakefield & Zola Matte.

OAK STAIN PALETTE STO



Oak stains can be applied to: Rezana, Tavola and Clonmel only.

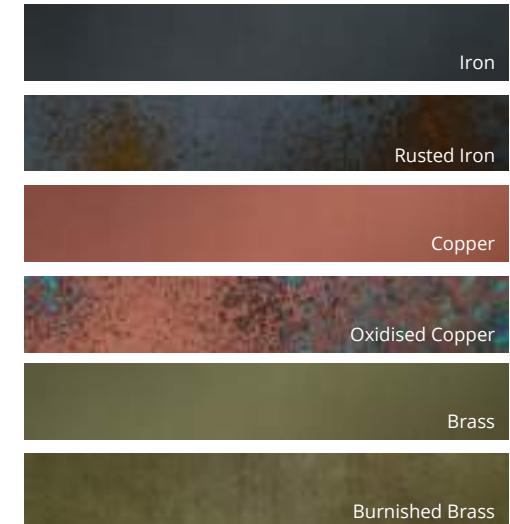
KELSO STAIN PALETTE STO



Can be applied to Kelso only.

Kelso veneers are randomly selected and therefore, each door will be different in grain structure and can have variation in colour.

FERRO PAINT PALETTE PTO



Metal paints can be applied to Ferro only.

This document is intended only as a guide and, as no picture can accurately convey colour representation it is suggested you examine our products personally before purchase. Only then can you appreciate the detail of each and every component, the finishes applied and the superior quality. If your chosen finish is not on display, we recommend that you order a sample.



Kitchen Ranges (at a glance)

EX EXPRESS COLOURS

For some ranges you will see that they are available in a selection of Express Colours. These are colours that are popular and therefore we use them to pre-finish a number of our kitchens and make them available in a shorter amount of time.

STO STAIN TO ORDER

We offer a selection of stains in a variety of hues. Depending on the grain structure of your chosen door there will be variations in colour from range to range. We highly recommend that you request a sample before placing your order. (See page 207)

PTO PAINT TO ORDER

A large number of selected ranges are available in 26 on-trend paint to order colours. You can request that your kitchen be painted in any number or combination of these colours. (See page 206)

MTO MADE TO ORDER

Our made to order products are available to those customers who desire alternative sizes or designer features to create a bespoke kitchen. Speak to your kitchen designer for further details on what is available.

CMS COLOUR MATCH SERVICE

Choose that 'specific' colour you have been longing after using our Colour Match Service. It's as easy as you providing a RAL (European Standard) or BS (British Standard) colour reference and we will match it.



ALDANA

Style: skinny shaker
Finish: ash painted

EX PTO CMS MTO

EXPRESS COLOURS

Porcelain	Ivory	Mussel
Light Grey	Stone	Dust Grey
Marine		

19 PAINT TO ORDER COLOURS see page 206



DAWSON

Style: shaker with bevelled edge & v-groove
Finish: smooth matte foil

EX

EXPRESS COLOURS

Porcelain	Light Grey	Cashmere
Dust Grey	Indigo	Graphite



GEORGIA

Style: shaker
Finish: smooth matte painted

EX PTO CMS

EXPRESS COLOURS

Porcelain	Mussel	Light Grey
Stone	Dust Grey	Marine
Graphite		

19 PAINT TO ORDER COLOURS see page 206



KELSO

Style: slab
Finish: ash stained

STO MTO

KELSO COLOURS

Sand Dune	Silver Sage	Fern Green
Vintage Port	Pacific Blue	Truffle Grey



BELGRAVIA

Style: inframe shaker with internal bead
Finish: ash painted

PTO CMS MTO

26 PAINT TO ORDER COLOURS see page 206



FERRO

Style: slab
Finish: painted metal

PTO MTO

FERRO COLOURS

Iron	Copper	Brass
Rusted Iron	Oxidised Copper	Burnished Brass



HARBORNE

Style: shaker with integrated handle
Finish: ash painted

PTO CMS

26 PAINT TO ORDER COLOURS see page 206



KENSINGTON

Style: shaker with v-groove
Finish: ash effect foil

EX

EXPRESS COLOURS

Porcelain	Ivory	Mussel
Light Grey	Cashmere	Dust Grey
Indigo	Graphite	



CLONMEL

Style: shaker
Finish: oak painted or stained

PTO CMS STO

CLONMEL STAINS

Light Oak	Parched Oak	Espresso
Weathered Silver	Carbon	Hacienda Black

26 PAINT TO ORDER COLOURS see page 206



FLORENCE

Style: shaker with internal bead
Finish: smooth matte painted

EX PTO CMS

EXPRESS COLOURS

Porcelain	Mussel	Light Grey
Stone	Dust Grey	Graphite

20 PAINT TO ORDER COLOURS see page 206



JEFFERSON

Style: raised centre panel
Finish: ash painted or light oak

EX PTO CMS MTO

EXPRESS COLOURS

Light Oak	Ivory
-----------	-------

25 PAINT TO ORDER COLOURS see page 206



MADISON

Style: shaker with v-groove
Finish: ash painted or light oak

EX PTO CMS MTO

EXPRESS COLOURS

Light Oak	Porcelain	Ivory
Mussel	Light Grey	Sage Green
Stone	Dust Grey	Marine

18 PAINT TO ORDER COLOURS see page 206



REZANA

Style: slab
Finish: knotty oak veneer cross scratched and stained



REZANA STAINS

Light Oak	Parched Oak	Espresso
Weathered Silver	Carbon	Hacienda Black



TAVOLA

Style: slab with horizontal grain
Finish: oak veneer painted or stained



TAVOLA STAINS

Light Oak	Parched Oak	Espresso
Weathered Silver	Carbon	Hacienda Black

26 PAINT TO ORDER COLOURS *see page 206*



ZOLA GLOSS

Style: slab
Finish: high gloss polyurethane



EXPRESS COLOURS

White	Porcelain	Ivory
Light Grey	Cashmere	Dust Grey
Graphite		



ZOLA MATTE

Style: slab
Finish: smooth matte painted



26 PAINT TO ORDER COLOURS *see page 206*



STRADA GLOSS

Style: slab with integrated J-handle
Finish: high gloss polyurethane



EXPRESS COLOURS

White	Porcelain	Ivory
Light Grey	Cashmere	Dust Grey
Graphite		



WAKEFIELD

Style: shaker with internal bead
Finish: ash painted or light oak



EXPRESS COLOURS

Light Oak	Porcelain	Ivory
Mussel	Light Grey	Sage Green
Stone	Dust Grey	Marine

18 PAINT TO ORDER COLOURS *see page 206*



ZOLA SOFT-MATTE

Style: slab
Finish: PET foil



EXPRESS COLOURS

White	Porcelain	Light Grey
Dust Grey	Indigo	Graphite



STRADA MATTE

Style: slab with integrated J-handle
Finish: smooth matte painted



EXPRESS COLOURS

White	Porcelain	Mussel
Light Grey	Stone	Dust Grey
Marine	Graphite	

18 PAINT TO ORDER COLOURS *see page 206*



WINDSOR SHAKER

Style: shaker with v-groove
Finish: ash foil



EXPRESS COLOURS

Ivory	Mussel
-------	--------

Handles

Choose from our extensive range of handles and knobs to complement traditional, contemporary or anything in between kitchen designs.

BRUSHED



K1-270
Satin Brass



K1-267
Satin Brass



K1-261
Satin Brass



K1-264
Satin Brass



K1-272
Brushed Nickel



K1-269
Brushed Nickel



K1-263
Brushed Nickel



K1-266
Brushed Nickel



K1-255
Satin Nickel



K1-257
Satin Nickel



K1-259
Satin Nickel



K1-168
Brushed Nickel

BRUSHED



K1-274
Brushed Inox look



K1-278
Brushed Inox look



K1-282
Brushed Inox look



K1-209
Inox Look



K1-273
Brushed brass



K1-277
Brushed brass



K1-281
Brushed brass



K1-201
Brushed Copper



K1-275
Brushed Anthracite



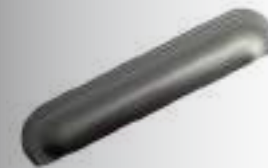
K1-279
Brushed Anthracite



K1-283
Brushed Anthracite



K1-52 to K1-53
Brushed Anthracite (various lengths available)



K1-197
Brushed Satin Nickel



K1-200
Brushed Satin Nickel



K1-204
Silk Polished



K1-203
Brushed Brass

BRUSHED



K1-215
Inox Look



K1-219
Inox Look



K1-212
Inox Look



K1-184
Brushed Nickel



K1-171
Brushed Nickel



K1-174
Brushed Nickel



K1-179
Brushed Nickel



K1-148
Brushed Steel



K1-167
Matte Chrome



K1-86
Brushed Chrome



K1-178
Brushed Nickel



K1-90 to K1-92
Brushed Nickel (various lengths available)



K1-146
Brushed Steel

POLISHED



K1-191
Polished Chrome



K1-193
Polished Chrome



K1-192
Polished Brass



K1-194
Polished Brass



K1-195
Polished Nickel



K1-198
Polished Nickel



K1-202
Mirror Polished Chrome



K1-205
Polished Brass



K1-207
Chrome



K1-169
Chrome



K1-166
Chrome



K1-141 to K1-142
Chrome (various lengths available)



K1-241 to K1-247
Chrome (various lengths available)



K1-227 to K1-233
Chrome (various lengths available)



K1-164
Chrome

POLISHED



K1-172
Chrome



K1-175
Chrome



K1-180
Chrome



K1-211
Chrome



K1-185 to K1-187
(various lengths available)
Chrome



K1-165
Chrome



K1-181 to K1-183
Chrome (various lengths available)



K1-188 to K1-190
Chrome (various lengths available)



K1-145
Chrome



K1-153
Polished Nickel



K1-156
Polished Nickel



K1-159
Polished Nickel



K1-147
Chrome



K1-177
Chrome

RUSTIC



K1-271
Antique Copper



K1-268
Antique Copper



K1-262
Antique Copper



K1-265
Antique Copper



K1-256
Black Nickel



K1-258
Black Nickel



K1-260
Black Nickel



K1-158
American Copper



K1-196
American Copper



K1-199
American Copper



K1-152
American Copper



K1-155
American Copper



K1-221
Brass



K1-223
Brass



K1-222
Copper



K1-224
Copper

RUSTIC



K1-214
Antique Brown



K1-218
Antique Brown



K1-208
Antique Brown



K1-113
Oak



K1-226
Brass



K1-225
Copper



K1-60
Antique Pewter



K1-61
Brass



K1-154
Pewter



K1-157
Pewter



K1-160
Pewter



K1-99
Pewter



K1-104
Pewter



K1-173
Pewter



K1-176
Pewter



K1-170
Pewter

BLACK



K1-276
Brushed Matte Black



K1-280
Brushed Matte Black



K1-284
Brushed Matte Black



K1-206
Matte Black



K1-210
Matte Black



K1-216
Matte Black



K1-220
Matte Black



K1-234 to K1-240
Matte Black Anodized
(various lengths available)



K1-248 to K1-254
Matte Black Anodized
(various lengths available)

Legs (for furniture)

BRUSHED

AY-1LEGBRUSHED

Brushed Chrome



POLISHED

AY-1LEGPOLISHED

Polished Chrome



RUSTIC

AY-1LEGBRASS

Antique brass



Our furniture legs have been specially selected to enhance the wide range of complementary furniture pieces that can be created to enhance your living space and lifestyle.

KITCHEN DOOR CARE & MAINTENANCE

With the appropriate care and maintenance our kitchen doors and components are designed to provide many years of reliable service. To help keep it in the best possible condition please follow the simple guidelines below.

INSTALLATION ADVICE

Pre Installation

Ensure that all new-builds or newly plastered rooms have been left to environmentally stabilise prior to the installation of new kitchen doors. Kitchen doors must not be installed into a damp, or moisture-rich environment as it will cause undesirable movement in the joints and panels of the door. A hygrometer should be used to assess conditions.

To help minimise any potential damage to the kitchen whilst you are installing it, please read and adhere to the following instructions and recommendations:

- We would advise that you make an initial check to confirm that you have the correct quantity and sizes of fascias; you can do this by referring to the labels attached to the outer packaging.
- The fascias should be stored flat and away from the working area. Take extreme care when stacking the fascias with hinges attached to ensure that the hinges do not mark other fascias. Do not lean the fascias against one another, or against any surface without proper protection in-between.
- Ensure that you fully inspect each individual fascia prior to attaching the hinges. Claims for damage to the fascia will not be accepted after the hinges have been attached.
- Take extreme care when unpacking the fascias and do not use sharp blades to cut away the packaging.
- When attaching the hinges, place the fascia face down on a soft clean surface, ensuring that there is no grit, sawdust or other matter underneath that could damage the surface of the fascia whilst the hinges are attached. It is good practice to place a sheet of clean cardboard between the fascia and the flat surface prior to attaching the hinges.
- If the hinges are 'knock-in' type, use a rubber mallet to knock the hinges into the fascia without using excessive force.
- Once the hinges have been attached to a door, hang the door on the unit straight away to avoid damage. Do not stack the doors with the hinges touching other doors, as this can cause scratches or marks to the other fascias.
- Do not stack the doors on their ends on any hard surface; this can cause chipping and scratching along the edge of the fascia, especially on the handle edge of ranges with an integral handle. Prior to fitting, the fascias should be stored flat, ensuring that they are not resting on any dirt or debris that may damage or mark the finish.
- You should take extreme care not to put the door down with excessive force on any edge, especially the handle edge, as this will cause crushing/impact damage on these edges.

- Take extreme care not to put the door down on any hard or rough surface such as bare concrete floors, or on any debris such as sawdust, grit or screws, as this can damage the product.
- If the fascias are attached to the carcass, then you should carefully remove the fascias by unclipping the hinges, and storing these flat in a clean safe environment away from your working area, utilising the packing materials from the units.
- Where cutting/scribing décor panels and trim, you must use a sharp quality saw blade of the appropriate grade for fine-cutting, or a suitable router. Small chips can appear along the cut-edge, and so extra care must be taken to minimise the risk of chipping. Using a blunt or inappropriate saw blade will produce a poor finish, and this will not be covered by the guarantee.
- *On Painted Products:* Any fine chips along the cut edge should be smoothed with a fine grade sand paper prior to fitting.
- All cut edges should be sealed against moisture ingress using a suitable water resistant sealant/adhesive prior to installation.
- All trims are supplied in long lengths and need to be cut down on site, and again it is important that this is done using the appropriate tools.
- When fitting the plinth, ensure that you check the dimensions of any adjacent appliances. On occasion, the plinth may need to be pulled forward to ensure that it clears the front of the appliance. This can be achieved by fitting blocks using off-cuts to the rear of the plinth prior to attaching the plinth clips, to step the plinth forward from its normal position.

General Care

As with all kitchen furniture the most common problems found occur as a result of excessive or prolonged exposure to heat and/or moisture. Always ensure that water is not left around sink areas as damage caused as a result is not covered by the guarantee.

Always wipe off excess moisture and be careful with extreme heat sources, such as kettles, ovens and toasters. It is recommended that these heat sources are not placed directly under wall units when they are in use; they generate a higher level of heat and moisture than is often appreciated and can quickly and easily lead to damage of the furniture.

Don't place appliances that create steam (e.g. steamer, coffee maker or kettle) underneath the cabinets so that the steam flows up against the underside of the cabinet and doors.

If using glass cleaner to clean your glass doors be careful not to damage the finish of the door and cabinet parts while cleaning. Do not spray glass cleaner directly on to the glass or cabinet parts as this may discolour the finish of your kitchen cabinets. Instead, spray a small amount of cleaner on to a lint free cloth or paper towel then wipe the glass.

Don't open the door of the dishwasher immediately after the programme has ended, as exposure to heat and the high humidity increases the risk that the door may absorb moisture and swell.

Please note that after a period of time it is quite normal for the colouring of kitchen units to mellow in colour. This is not a manufacturing fault and is as a result of exposure to light. This means that any additional parts subsequently ordered for your kitchen, or supplied as replacements may not be an exact colour match. However any additional parts supplied will also mellow over time to blend with your existing units.

The colour of doors and drawer fronts may appear mismatched in colour. This apparent mismatch is sometimes the effect of differing light conditions within your kitchen, (known as metamerism). To check your doors and fascia you should place them side by side in natural daylight for comparison.

Cleaning advice for all door types including timber, painted, foil & stainless steel

- Do not use wax-furniture polish, abrasive or aggressive cleaners, bleach or other hypochlorite (chlorine) based cleaners, multipurpose cleaners, dilutes, acetone, alcohol, solvent or similar products on the door, as this will damage the surface; additionally wax and polishes leave a residue build up that is difficult to remove.
- Only use a 5% soap, 95% water (liquid soap) solution, wiping with a damp (not wet) cloth, finally drying with a soft clean cloth.
- Ensure all cooking splashes are wiped immediately with a damp cloth; and dust with a soft cloth only.
- Never use any abrasive pads or abrasive cleaners on the furniture. Spills and condensation on the fascias/panels should be cleaned and dried immediately.

Timber & Veneered Doors

Cleaning: when cleaning timber doors you must follow the pattern of the grain. It is advisable to use a damp (not wet) cloth to remove fingerprints and marks, followed at once with a clean and dry soft cloth.

Moisture: excess moisture can damage a timber product - it is recommended that susceptible areas such as around the sink are thoroughly maintained and kept dry at all times.

Light: timber changes colour when exposed to light. Light, lacquered surfaces also have a certain tendency to “yellow with age” depending on the exposure to light. The species of timber and intensity of exposure will affect the rate of change. Due to this we recommend that timber samples be changed regularly.

It is advised that colour change is taken into consideration when replacing or fitting new doors some time after the original kitchen has been installed.

Foil & High Gloss Finished Doors

Foil/Lacquer coated products are manufactured from the highest quality materials. Please be careful not to puncture the foil/melamine lacquered surface of your panels. These should be kept dry in order to prevent moisture ingress.

Your gloss doors will come with a protective film over the front. You should remove this only after they are installed as the curing process continues for around 72 hours after the film is removed. This means the doors will be liable to scratching and other marks. You should avoid cleaning the doors for at least a few days to prevent any marks appearing on the surface.

You should clean the doors with a soft damp cloth and a mild detergent. Never use any harsh or abrasive cleaners as this may damage the gloss surface of the door. Normal cleaning and polishing may leave minor scratches on the surface of the door, which is quite natural.

Moisture: Periodically clean the interior and exterior surfaces of the door using a soft, damp cloth. Wipe dry all surfaces after cleaning.

Use only cleaning agents that are intended for the materials used in your kitchen. Avoid any agents that contain ammonia, alcohol, bleach or an abrasive.

If the surface of the product is exposed to any oil based substance (for example olive oil, butter, margarine or cooking oil), the spillage must be wiped away immediately to prevent staining. Grease marks caused by these oil-based products can easily be removed by use of a mild detergent, non-abrasive cleaner if used immediately after spillage has happened.

Abrasive cleaners are not recommended for this type of product. Do not expose the doors or panels to a temperature in excess of 60°C (140°F) (Approximately the temperature of washing up water).

Light: If the doors are supplied with a protective film on the face they must not be directly exposed to sunlight. Once installation is complete, carefully remove the protective film from the front of the fascia. We also advise that colour change is taken into consideration when replacing or fitting new doors some time after the original kitchen has been installed.

Painted Doors

Cleaning: it is advisable to use a damp (not wet) cloth to remove fingerprints and marks, followed at once with a clean and dry soft cloth. Any form of furniture polish or other cleaning products should be avoided.

Light: painted finishes will change colour when exposed to light - the intensity of exposure will affect the rate of change. Any colour samples and door samples provided should be used as a guide only and due to certain variables, may not provide an exact match to the finished painted product.

We also advise that colour change is taken into consideration when replacing or fitting new doors some time after the original kitchen has been installed.

Stained Doors

Our range of stains are protected by an application of lacquer.

Cleaning: it is advisable to use a damp (not wet) cloth to remove fingerprints and marks, followed at once with a clean and dry soft cloth.

Light: stained finishes will change colour when exposed to light - the intensity of exposure will affect the rate of change.

We also advise that colour change is taken into consideration when replacing or fitting new doors some time after the original kitchen has been installed.

Donegal

The Haw, Lifford
Co. Donegal
00353 (0) 74 9141 985
sales@pattersonskitchens.ie

L'Derry

5 Ebrington Terrace
L'Derry, BT47 6JS
028 7134 2050
sales@pattersonskitchens.co.uk

Dublin

Glenageary Rd Upper
Dún Laoghaire | Co. Dublin
00353 (0) 1 214 8494
kieran@pattersonskitchens.ie

www.pattersonskitchens.ie

Follow us on social media



Pattersons are stockists and retailers of

AISLING
artisan furniture

nobilialia[®]

kuhlmann

