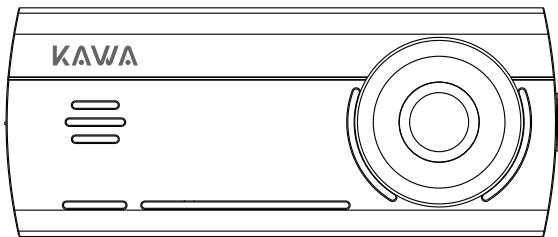


KAWA



User Manual for KAWA Dash Cam D8



KAWA AUTO

KAWA AUTO



GET IT ON
Google Play



Download on the
App Store



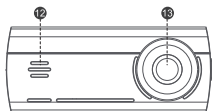
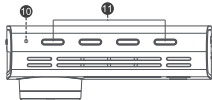
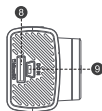
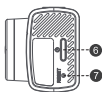
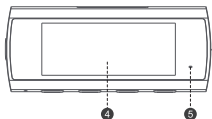
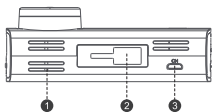
E-mail: support@kawa-in.com



Website: www.kawa-in.com

User Manual for KAWA Dash Cam D8

Product Appearance



- ❶ Cooling hole
- ❷ Base installation slot
- ❸ Rear camera interface
- ❹ Display
- ❺ LED

- ❻ Power button
- ❼ Reset button
- ❽ Micro SD card slot
- ❾ Power interface
- ❿ MIC

- ⓫ Function button
- ⓬ Speaker
- ⓭ Lens

Note: the product, accessories, interface shown in the user manual are for your reference only. Due to the upgrade of product, your device may be slightly different with the schematic diagrams. Pls refer to the actual device.

Basic Parameters

Product Name: DASH CAMERA
Input: 5V $\overline{\text{DC}}$ 2A

Brand Name: KAWA
Power supply: car charger

Model: D8
Image resolution: 3840x2160

Items in the Box

Dash Cam × 1
Car Charger × 1

Holder × 1
Crowbar × 1

Power Cord × 1
Anti-static Film × 2

User Manual × 1
Rear Camera Kit × 1

Heat-resistant Adhesive Paper × 2 (one of which has been attached to the base of the holder)

Product Installation

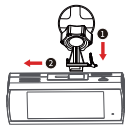
1. Install the Micro SD Card

Insert the Micro SD card into the Micro SD card slot until you hear a "click" sound.



2. Install the Mount

As shown in the figure, please install the base into the slot and slide it to the left. When you hear a "click" sound, it means that it has been installed in the correct position. Please make sure that the base is indeed installed on the dashcam.



3. Install the Anti-static Film

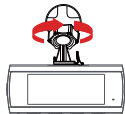
Install the anti-static film onto the windshield in the dotted area indicated in the figure. Please select a smooth and clean area (other than edges) on the windshield to install the anti-static film.

Wipe the installation area before installation, and fully compress the air bubbles between the anti-static film and windshield during installation.



4. Attach the Dash Cam

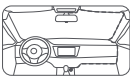
Remove the protective film from the heat-resistant adhesive paper on the base of the holder, and attach the dash cam to the dashed box of the anti-static film. Please press the base of the holder by hand to ensure a tight fit between the heat-resistant adhesive paper and anti-static film.



5. Route Cables and Connect to Power Outlets

As shown in the figure, route the power cords along the top of the windshield, the A-pillar, and the storage box of the co-driver seat to the vicinity of the cigarette lighter, connect to the car charger, and then insert the cigarette lighter.

Note: the location of the cigarette lighter may vary from vehicle to vehicle, and the above figure is for reference only.



6. Adjust the Angle of the Camera

Please turn on the dash cam and adjust the camera angle according to the preview screen to ensure that the camera is facing straight ahead.

Button Functions

You can press/click the power button for following times or durations to achieve different functions.

Button name	State	Operation	Function
Power Button	Power-off (the power supply is connected)	Press and hold the power button for 3s	To turn on the dash cam
	Power-on	Press and hold the power button for 3s	To turn off the dash cam
		Click the power button	Press to turn screen on/off

LED Functions


If the dash cam is turned on, the LED status will indicate the corresponding function.

Status	Function
Remains green	Normal video recording
	Parking surveillance recording
Flashing quickly in green	Record emergency video
Remains red	Not recording, card exception
	SD card removed
	Dash cam or App accessing album
Blue light stays on	Stop recording when App accessing the album
Blue light flashing	Formatting storage card process
	Factory reset process

Instructions for Use of Micro SD Card

- The Micro SD card is not included in the package. You need to buy your own Micro SD card.
- The dash cam supports standard Micro SD card. Please use a 16GB-256GB Micro SD card with data rate of Class 10 or above.
- Please insert an appropriate Micro SD card before using the dash cam.
- The default file partition format of the Micro SD card may be different from the format of the dash cam. When the Micro SD card is inserted for the first time, please format it in the dash cam before use. This will delete all files from the Micro SD card. Please back up the important data to another device in advance.
- To prevent the decline of reading/writing speed after long-term use, it is recommended to format the Micro SD card in the dash cam once a month.
- After repeated overwriting, the Micro SD card may be damaged or write at a lower speed, which will affect its ability to save video and image files. If this happens, please replace the Micro SD card immediately. The manufacturer shall not be held liable for any malfunction caused by the Micro SD card.
- Please use a reputable and high-quality Micro SD card. For an inferior Micro SD card, there may be a difference between the actual reading/writing speed and nominal speed, and between the actual storage capacity and nominal capacity. The manufacturer shall not be held liable for any video loss or damage caused by a low-quality Micro SD card.
- In order not to damage the recorded video or Micro SD card, please do not insert or remove the Micro SD card after the dash cam is turned on.

Precautions before Installation

- To ensure correct installation, please use the supplied accessories in the specified manner. If you use non-supplied or incompatible accessories, they may damage the internal parts of this product, or they may become loose and cause this product to fall off.
- DO NOT install this product at a hot or humid location, such as:
 - Near the heater, air vents or air-conditioning vents;
 - Locations that may be exposed to rain, for example, near the vehicle door.
-  DO NOT install this product at locations that block the driver's view, compromises the performance of any operating system or safety function of the vehicle, including airbags and hazard light switch, or compromises the driver's ability to operate the vehicle safely.
- DO NOT install this product in front of or at sides of the dashboard, vehicle door or pillar where one of the airbags may unfold. Please refer to the User Manual of your vehicle for the unfolding area of the front airbag, in order to prevent product failure and personal injury.

Notes

- This product is a driving assistance product intended to record what's going on around your vehicle, not intended to help safe driving. The manufacturer shall not be held liable for any driving accidents (and any losses incurred therefrom) caused by product failure, information loss or user operations of this product.
- Due to differences in vehicle conditions, driving habits or driving environment, some functions of this product may not work properly under certain circumstances. Such factors as power failure, use beyond normal temperature/humidity, collision or Micro SD card damage may cause video recording failure. This product does not guarantee that all videos can be completely saved under any circumstances. The driving videos recorded by this product are intended for reference only.
- Keep this product away from strong magnetic fields, which may cause damage to the product.
- This product can record and save the image of vehicle accidents, but does not guarantee to record the image of all accidents. Minor collision accidents cannot activate the collision sensor, so their image may not be recorded in a special folder.
- This product should not touch water drops or splashes. Please keep it dry to avoid malfunction.
- DO NOT use this product at a temperature higher than 65°C or lower than -20°C.
- If this product is kept idle for a long time, the battery power may be exhausted, and you may need to set the system time manually when the product is turned on next time.
- DO NOT subject this product to violent shocks or vibrations, so as to avoid product damage, malfunction or functioning failure.
- DO NOT use chemical solvents or detergents to clean this product.

Quick configuration

1. Download the app.

Download KAWA AUTO APP by scanning the QR code below. (After downloading the app, you can use it to watch the real-time video recorded by the dash cam, adjust the dash cam's installation angle, and view/download the recorded videos.)



KAWA AUTO



2. Add to APP.

Open the KAWA AUTO APP, click on the "+" in the upper right corner, select "KAWA Dash Cam D8", and follow the instructions in the APP to operate.

***During the process of adding the dash cam to the app, the phone needs to connect to the dash cam's hotspot.**

- Please connect your phone to the dash cam's hotspot (make sure the dash cam's hotspot is turned on), not to another phone's hotspot or your home WiFi.
- Hotspot Name: KAWA_D8_XXXX (or as indicated on the product label) Initial Password: 12345678
- To connect the hotspot of the dash cam, the operating system of your phone should be Android 5.0 or iOS 8.0 and above.
- If VPN is enabled, please disable it before connecting to the dash cam.

KAWA PLAYER PC media player

Playing on Computer

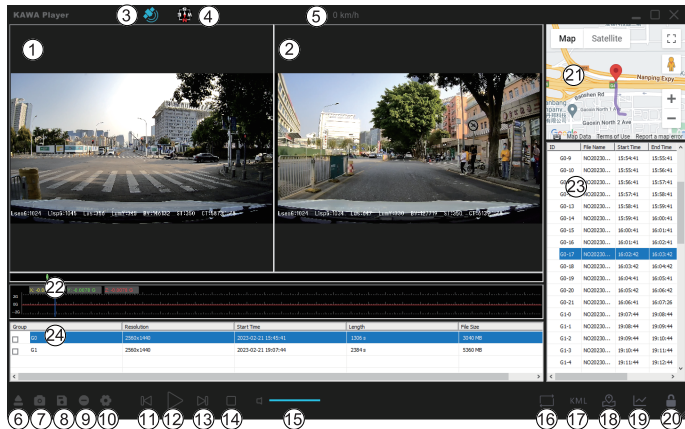
Our company's official website provides a dedicated player called "KAWA Player," which can be downloaded to view G-sensor information and driving trajectories on the map.

*If a non-dedicated player is used, it may not be played normally.

How to use the player

1. Download the "KAWA Player" from our company's official website.
(<https://www.kawa-in.com/pages/pc>)
2. Unzip the downloaded file.
3. Open **[KAWA Player.exe]**

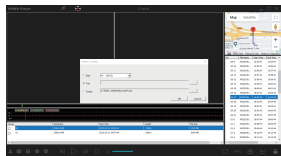
Playing screen



1.Front camera image	9.Delete video	17.Generate and save KML file
2.Rear camera image	10.Set language and maps	18.Display Map
3.GPS reception status	11.Fast backward	19.Display line chart
4.Direction	12.Play/Pause	20.Unlock file
5.Speed	13.Fast forward	21.Map
6.Select a video file or folder	14.Stop playback	22.G-sensor line chart
7.Screenshot	15.Volume control	23.Video list
8.Save video as	16.Loop playback	24.Video group list

Playback steps

- 1.Click the file icon
- 2.File list appears (Select a video file or folder)
- 3.Read video, start playing



Q&A

1. Why are the videos missing in the album?

-The video may have been overwritten by a new one.

-All videos and photos recorded by the device are stored using a loop overwrite method. Once the storage limit is reached, the dash cam will automatically delete the earliest recorded videos.

-To ensure important videos are not erased, please backup them to other devices such as your phone or computer in a timely manner.

2. Why are emergency videos quickly overwritten in a loop?

-If your driving style is aggressive, frequently accelerating or decelerating sharply, or driving on poorly maintained roads, and you have set a high collision sensitivity, it is easy to generate emergency videos. Once the emergency video storage limit is reached, newly generated emergency videos will overwrite previous ones.

If you fit the above criteria, it is recommended to choose a low sensitivity setting.

3. Does viewing videos and photos in the album on the dash cam consume mobile data?

-No, it won't.

-The dash cam itself acts as a LAN Wi-Fi, and when connected to a phone, it uses the dash cam's network, so it won't consume mobile data.

Note: The dash cam's Wi-Fi network doesn't support internet access. If you want to access the internet, please disconnect from the dash cam.

User manual for HD rearview camera

Basic Parameters

Product Name: Rear camera
Image resolution: 1920x1080

Brand Name: KAWA
Input: 5V=0.5A

Model: R1

Items in the Box

HD rearview camera × 1

Video signal cable × 1

Anti-static Film × 2

Heat-resistant Adhesive Paper × 2 (one of which has been attached to the base of the holder)

Function

- As an accessory for in-vehicle products, this camera needs to be used together with the main device.
- After being correctly installed and connected to the main device, this camera can capture images from the rear of the vehicle and store them on the main device's storage card.

Instructions

- This camera is powered by the main device and will automatically turn on when the main device is powered on. The camera will also automatically turn off when the main device is shut down or in sleep mode.
- The main device only provides power to the camera when it is receiving external power. If the main device is not receiving external power, it cannot provide power to the camera.
- The images captured by the camera are automatically stored on the main device's storage card. When the storage card reaches its storage limit, the latest images will overwrite the oldest images in a cyclic manner.

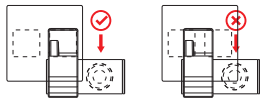
Product Installation

1. Install the Anti-static Film

Install the anti-static film in the upper area of the rear windshield in the dashed area shown in the following figure. Wipe the installation area before installation, and fully compress the air bubbles between the anti-static film and windshield during installation.



2. Remove the protective film from the heat-resistant adhesive paper on the base of the holder, and attach the dash cam to a suitable position on the anti-static film. (Note: Do not let the anti-static film cover the lens to avoid affecting the clarity of the lens.)



3. Connect the Main Device

Connect the camera and video signal cable, route the cable along the top of the rear windshield, C-pillar, and top of the side window to the main device, and plug the Micro USB into the rear camera interface of the main device.



4. Adjust the angle of the camera

Turn on the main device, switch to the rear camera view, adjust the camera angle up or down while comparing the preview screen to ensure that the camera is facing directly towards the rear of the vehicle.

Installation and wiring methods may vary from the instructions for different vehicles, please have a professional installer handle the installation.

Notes

1. Please have a professional installer install it. If personal incorrect operation causes problems such as short-circuit of the car power supply, damage to the car battery, damage to the car interior, etc., our company will not be responsible.
2. The company is not responsible for the losses caused by improper installation rather than product quality issues.
3. The company is not responsible for any malfunction of the product caused by reasons other than product quality.
4. Do not plug or unplug the camera while the product is powered on during installation and use to avoid product damage.
5. Please use this product to the extent permitted by law.
The laws of certain countries, states or provinces may prohibit or restrict the installation and use of this product in your vehicle. Please comply with all applicable laws and regulations regarding the use, installation and operation of this product. It is your responsibility to comply with all applicable laws, rules, regulations and ordinances, including passenger privacy, and not to use this product in any place where installation or use of this product is prohibited.

Certification



This device complies with the radio interference requirements of the European Community.

Use the DASH CAMERA in the environment with the temperature between -20°C and 65°C, otherwise, it may damage your DASH CAMERA. It can be operating under 2000m.

Hereby, KAWA ELECTRONICS COMPANY LIMITED declare that the radio equipment type DASH CAMERA is compliance with Directive 2014/53/EU.

Caution:

For this device, Head SAR and Body SAR was performed with the device configured in the positions according to EN62311, and Body SAR was performed with the device 300mm from the phantom. Body SAR was also performed with the headset attached and without.

For Adapter: Shall be installed near the equipment and shall be easily accessible.

For Battery: Risk of explosion battery is replaced by an incorrect type, dispose of used batteries according to the instructions.

Only can use the adapter as below:

Manufacturer: Stuff Electronics (Dong Guan) Limited

Model Name: AC01

Rated Input & Output: 12V & 5V/2A

The plug could be disconnected from adapter.

Operating Frequency Range	The maximum RF Output Power
WiFi :2412 - 2472 MHz	17.86dBm

FCC RF Exposure Warning Statements:

NOTE: This equipment has been tested and found to comply with the limits for a Class B digital device, pursuant to part 15 of the FCC Rules. These limits are designed to provide reasonable protection against harmful interference in a residential installation. This equipment generates uses and can radiate radio frequency energy and, if not installed and used in accordance with the instructions, may cause harmful interference to radio communications. However, there is no guarantee that interference will not occur in a particular installation. If this equipment does cause harmful interference to radio or television reception, which can be determined by turning the equipment off and on, the user is encouraged to try to correct the interference by one or more of the following measures:

- Reorient or relocate the receiving antenna.
 - Increase the separation between the equipment and receiver.
 - Connect the equipment into an outlet on a circuit different from that to which the receiver is connected.
 - Consult the dealer or an experienced radio/TV technician for help
- Changes or modifications not expressly approved by the party responsible for compliance could void the user's authority to operate the equipment.

This device complies with Part 15 of the FCC Rules. Operation is subject to the following two conditions:

(1) this device may not cause harmful interference, and (2) this device must accept any interference received, including interference that may cause undesired operation.

FCC Radiation Exposure Statement:

This equipment complies with FCC radiation exposure limits set forth for an uncontrolled environment. This equipment shall be installed and operated with minimum distance 20cm between the radiator & body.

FCC ID: 2AZWZ-D8



This product is designed and manufactured with high quality materials and components, which can be recycled and reused.



This marking indicates that this product should not be disposed with other household wastes throughout the EU. To prevent possible harm to the environment or human health from uncontrolled waste disposal, recycle it responsibly to promote the sustainable reuse of material resources. To return your used device, please use the return and collection systems or contact the retailer where the product was purchased. They can take this product for environmental safe recycling.

This device contains licence-exempt transmitter(s)/receiver(s) that comply with Innovation, Science and Economic Development Canada's licence-exempt RSS(s). Operation is subject to the following two conditions:

(1) This device may not cause interference.

(2) This device must accept any interference, including interference that may cause undesired operation of the device.

L'émetteur/récepteur exempt de licence contenu dans le présent appareil est conforme aux CNR d'Innovation, Sciences et Développement économique Canada applicables aux appareils radio exempts de licence. L'exploitation est autorisée aux deux conditions suivantes :

(1) L'appareil ne doit pas produire de brouillage;

(2) L'appareil doit accepter tout brouillage radioélectrique subi, même si le brouillage est susceptible d'en compromettre le fonctionnement.

Radio Frequency Exposure Statement for IC:

This equipment complies with IC exposure limits set forth for an uncontrolled environment. This equipment shall be installed and operated with minimum distance 20cm between the radiator & body.

Cet équipement est conforme aux limites d'exposition IC définies pour un environnement non contrôlé. Cet équipement doit être installé et utilisé avec une distance minimale de 20 cm entre le radiateur et la carrosserie.

IC: 27280-D8



Warranty: 12-month limited warranty

Manufacturer: KAWA ELECTRONICS COMPANY LIMITED

Address: FLAT A 21/F CHEUNG LEE IND BLDG 9 CHEUNG LEE ST CHAI WAN HONG KONG

E-mail: support@kawa-in.com

Website: www.kawa-in.com