

Features:

20AH Lithium Detachable Battery

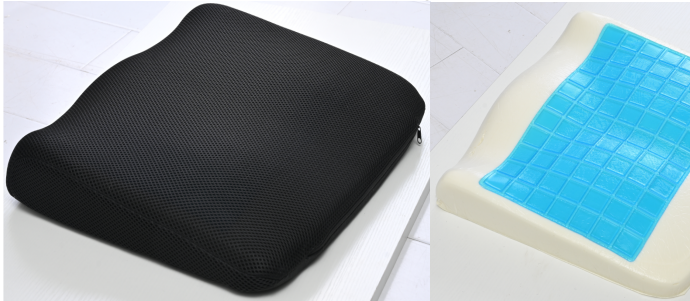
The extended 20AH lithium battery allows you to travel up to 13-15 miles on a single charge, With Off-board charging capability



Foldable and Convenient: The frame is made of aluminum alloy, only 57 lb, it can be quickly folded within 3 seconds, small size, can be transported in cars, trains, ships, the handles on the wheelchair allow for easy portability, and the auxiliary wheels makes it even more convenient to transport like a luggage.

Gel and memory foam cushion:

Thanks to the special gel and memory foam cushion, caused by prolonged sitting. In addition, the armrest design is more comfortable and labor-saving.



Easy to Operate

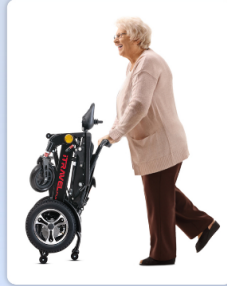
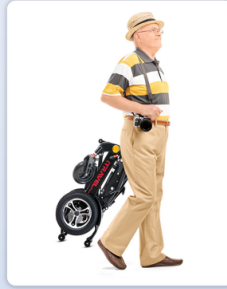
ACCURATE DIRECTION CONTROL



With its intuitive joystick control system, this wheelchair is easy to operate for users of all ages and abilities. Joystick could be installed for left and right

Easy for travel

Auxiliary wheels can be pushed or pulled.



Versatile: This wheelchair is suitable for both indoor and outdoor use, making it perfect for everyday activities.

Compact Design: Thanks to its compact design, this electric wheelchair can easily navigate tight spaces, narrow doorways, and crowded areas.



Armrest expandable



Joystick available for both sides use



Adjustable foot rest

Easy to adjust
For your convenience and control



CONVENIENT FOR TRANSPORT

Simple travel by folding

3 seconds foldable,
convenient storage,
very suitable for daily use



Fit in **most trunks** of the car



High-Quality Construction: Made from durable CNC materials, this wheelchair is built to last and withstand regular use.

Safe and Reliable: The chair is equipped with a number of safety features, including anti-tip wheels and a secure lap belt, ensuring your safety at all times.

Affordable: Despite its many features and benefits, this electric wheelchair is still affordable, making it accessible to a wide range of users.

6 shock absorption: Equipped with shock absorption systems at the same time, deal with all kinds of bumpy roads



Warranty Service : 1-year warranty for frame,1 year warranty for engine, controller and other components, 6-month warranty for battery

Specifications:

| Main technical data | Itravel Plus | | |
|---------------------|------------------|----------------------|---------------------|
| Overall size | 42.32"x24.4"x38" | Folded size | 24.4"*17.32"*31.89" |
| Seat size | 18"x16" | N.W. | 65lbs |
| Max. Speed | 4 MPH | Seat Height | 18" |
| Armrest height | 11" | Backrest | 17" |
| Max loading weight | 300lbs | Front wheel diameter | 8" |
| Rear wheel diameter | 12 inch | Battery | DC 24V 20AH Li-ion |

| | | | |
|-----------------|---------------------|----------------------|---------------------------|
| Motor (*2pcs) | DC 24V 180W | Battery charger | AC 100~240V, 50Hz, 1.5~5A |
| Control | 35A | Max driving distance | 15 Miles |
| Degree of | IPX3 | Max safe | 10° |
| Turning radium | ≤47" | Static | 9° |
| Reversing width | ≤59" | Climbing | 6° |
| Tire pressure | 2kgf/m ² | Obstacle climbing | 2" |