

STARFISH WIFI SMART INDOOR/ OUTDOOR STRING LIGHTS

Model: S11288



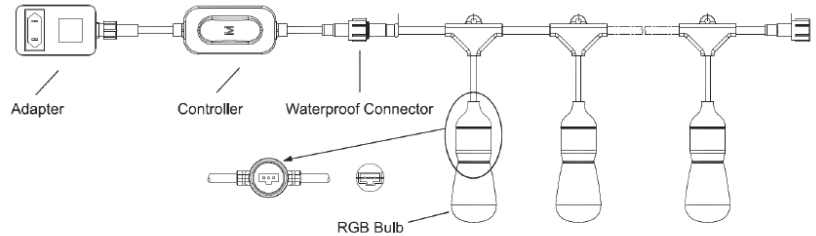
INSTALLATION AND SAFETY INSTRUCTIONS

IMPORTANT: Read before installing fixture. Retain for future reference.

WARNING: Risk of Fire or Electric Shock

- Installation requires knowledge of luminaries electrical systems. If not qualified, do not attempt installation. Contact a qualified electrician.
- To reduce risk of fire and over-heating, secure all connections.
- TURN OFF the electrical power before proceeding.
- The electrical rating of this product is 100-120V/50-60Hz.
- The grounding and banding of the overall system shall be done in accordance with National Electric Code (NEC) Article 600 and local codes.
- These string lights can be connected end-to-end, 3 x 24' sets maximum*.
- Never use with an extension cord unless the plug can be fully inserted. DO NOT alter the plug.
- To reduce the risk of electric shock, DO NOT use the product if power cord is frayed or broken.
- Always unplug this product before installing or replacing bulbs.
- To avoid risk of fire, burns, personal injury and electric shock, it should not be played with or placed where small children can reach it.

NOTE: This device complies with part 15 of the FCC Rules. Operation is subject to the following two conditions: (1) This device may not cause harmful interference; (2) This device must accept any interference received, including interference that may cause undesired operation. Visit www.Satco.com for full warranty details and dimmer compatibility information.



***NOTE: Cannot be used in conjunction with S11272**



CONTENTS:

- 1 String Light with LED Bulbs
- 1 Adapter
- 1 Controller

INSTALLATION

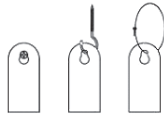
NOTE: DO NOT DRAPE CORD. KEEP AWAY FROM CHILDREN.

Before beginning installation of product, make sure all parts are present. If any part is missing or damaged, do not attempt to install the product. No tools are required for installation.

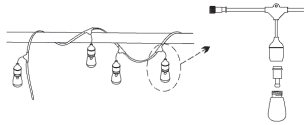
STEP 1: Carefully unpack string lights from box. Straighten string lights, eliminating any kinks before using.



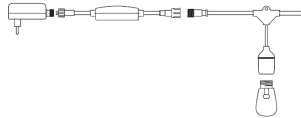
STEP 2: Each string light is designed with a universal keyhole for mounting with lights hanging downward. Hardware options (not included) screws, nails, zip ties, hooks and more.



STEP 3: Before plugging power cord of lights into a wall outlet, make sure each light bulb is securely fastened. Install the bulbs into the sockets.



STEP 4: Connect the string light with the controller and adapter.



STEP 5: Plug string light into the nearest outlet. Installation is complete. Turn power ON.

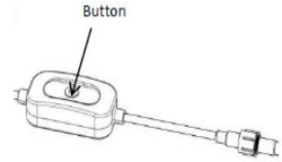
CAUTION: RISK OF ELECTRIC SHOCK

Do not lay the adapter directly on the ground or where standing water may accumulate. Keep plugs and receptacles dry. Do not submerge.



STEP 6: Via the control button on the driver, toggle through the functions:

- Scene 1 - Meteor Jump
- Scene 2 - 7 Colors Flash
- Scene 3 - 7 Colors Jump
- Scene 4 - Breath Change
- Scene 5 - Breath Meteor
- Scene 6 - Circle Change
- Scene 7 - DIY
- OFF
- Press and hold on for 5 seconds to connect APP



STEP 7: INSTALLING MULTIPLE STRING LIGHT SETS:

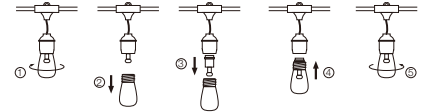
NOTE: Always unplug string light from outlet before connecting additional string lights. Extend the length of your lights by connecting more than one strand together to form one continuous string up to 72 feet (3 sets) for S11288.

Simply follow the above installation steps making sure each connection between strands is secured, plug the male end into the female and slide the plastic ring over threads, securely tighten plastic ring when done.



STEP 8: Replacing bulbs.

NOTE: Always unplug the string light before replacing bulbs.



Unscrew bulb plastic cover

Remove cover from the socket

Pull LED light out of its base

Align the 4-pins of the new light and push in

Tighten plastic cover back into the socket

STEP 9: App Connection: To connect your device, download the free "Starfish Smart Lighting" App from the app store.

Please refer to our Starfish User Guide for detailed instructions on how to pair your device.



Download the STARFISH App

