

DIMENSION[®]

LED Tape Light Kits

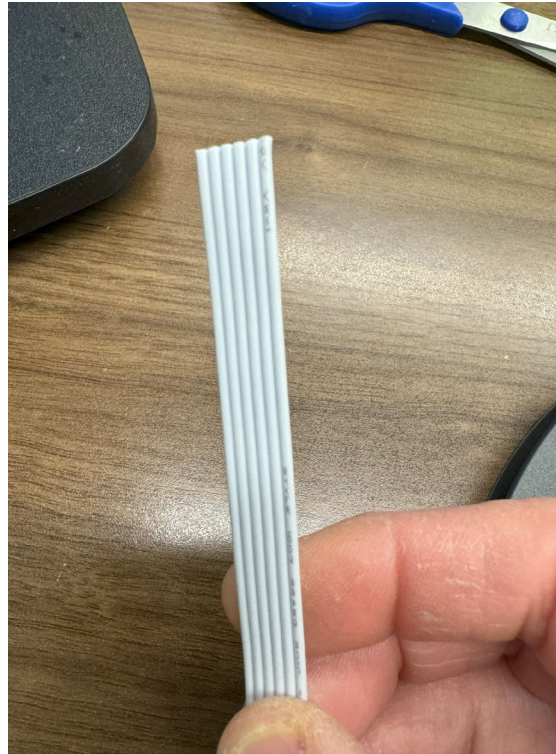
64-165 & 64-164 50FT 6-Pin Wire Spool
and Wire-to-Tape Connector Installation

- Quick Reference Guide on how to line-up and install 2 pieces of LED Tape Light using the 64-165 6-Pin Wire and 64-164 Wire-to-Tape Connectors.

* - There should be no power to the LED Tape Light through this process.



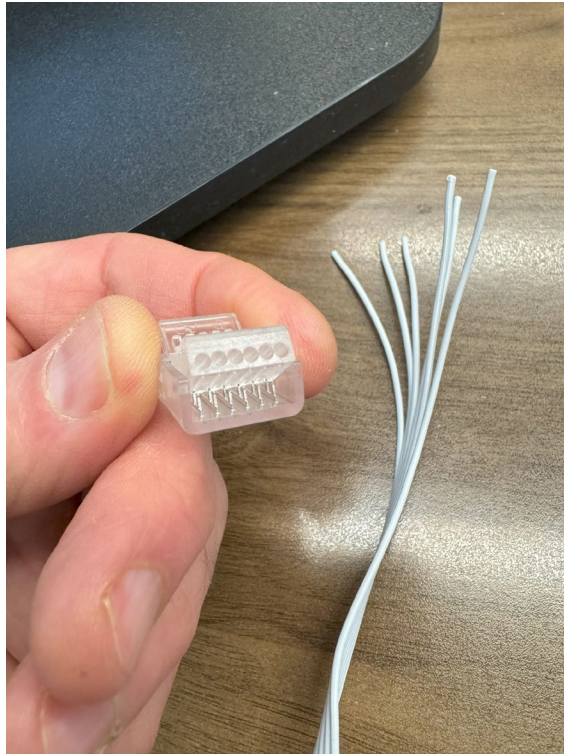
Cut the 6-pin wire to desired length.



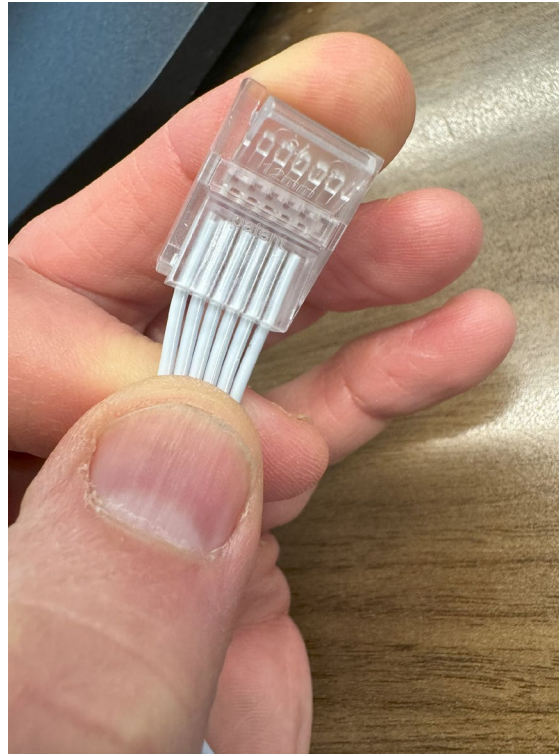
The wires will be together.



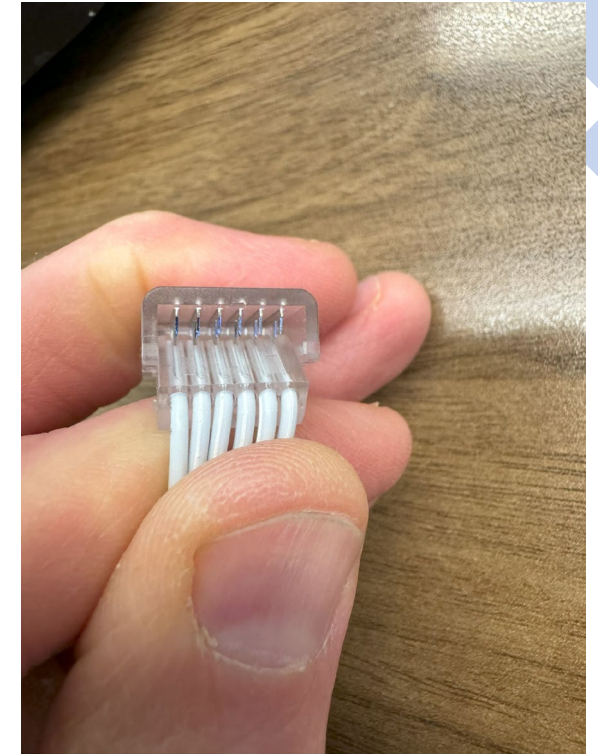
Slightly cut to get you started inbetween each wire and then pull apart to give some slack when installing into the connectors.



Start inserting the wires into the holes of the connector, keep the wires in the same order, do not tangle. Do not need to strip the wires.



Make sure they are all the way into the connector.



The pins will push into the wire making contact with the copper inside.



Clamp down by hand or with wire pliers to secure.



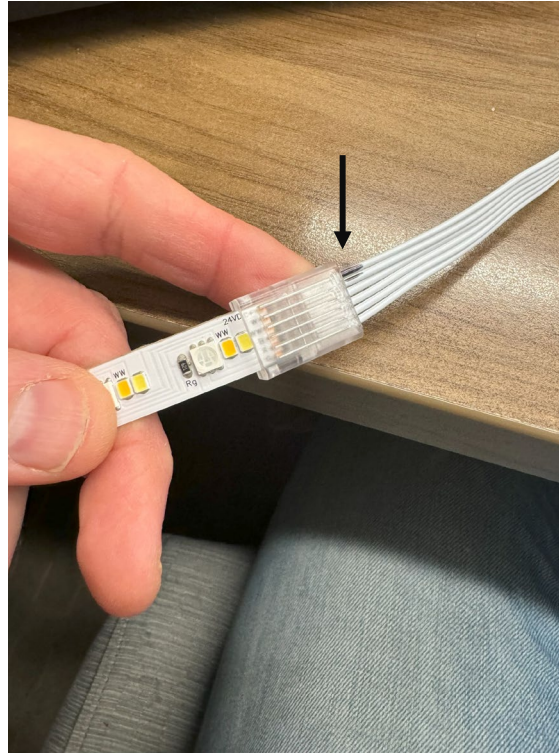
Take the cut end of the tape and insert so the pins in the connector contact with all 6 copper markings.



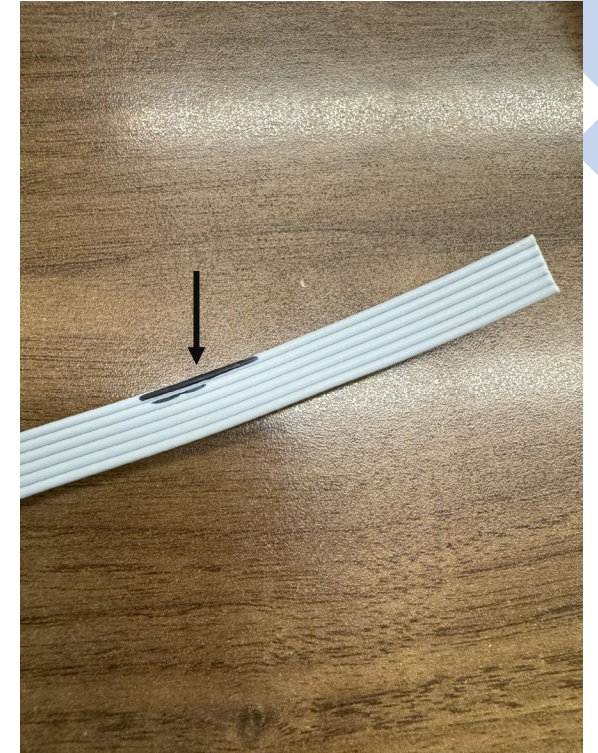
Press together to secure, you may use wire pliers or another tool to secure.



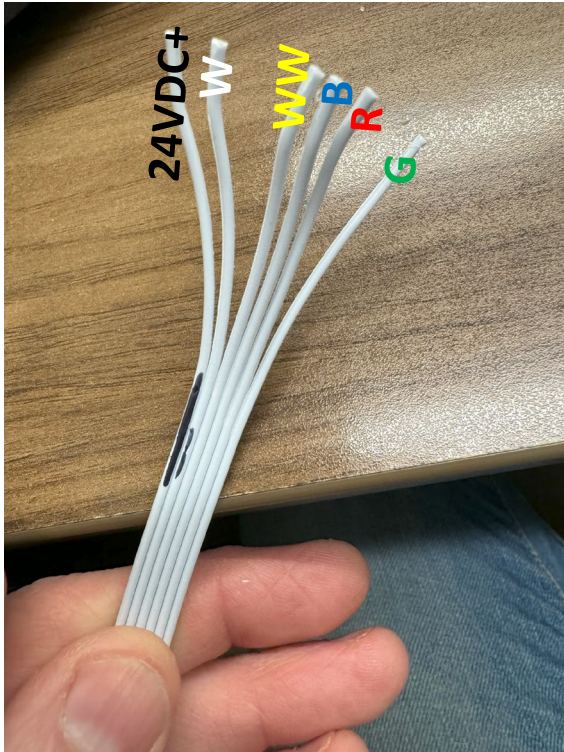
Look for the 24VDC+.



Use a black marker to indicate that this is the wire with the power.



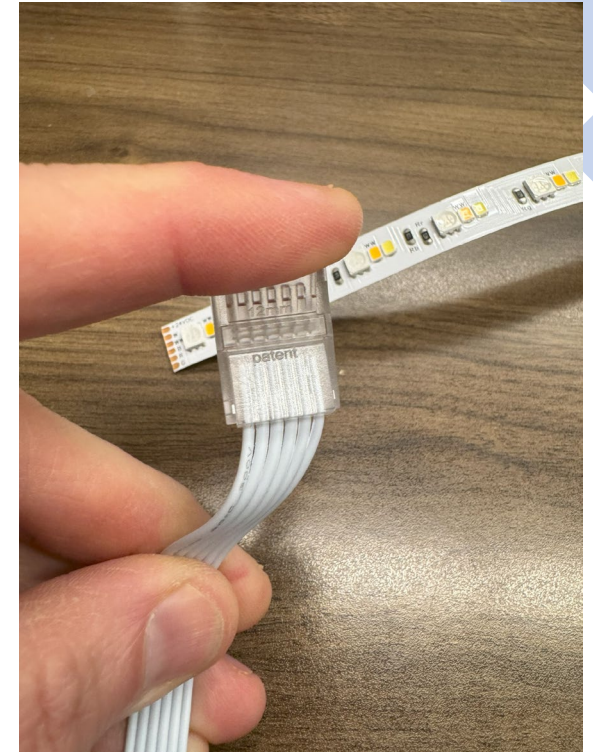
Run down to the end of the wire and indicate with black marker the wire that is connected to the 24VDC+. Give a little slack for when you break the wires apart.



Repeating the process from earlier, spread the wires apart. Note the wires must match up from the other side when connecting to the second piece of tape.



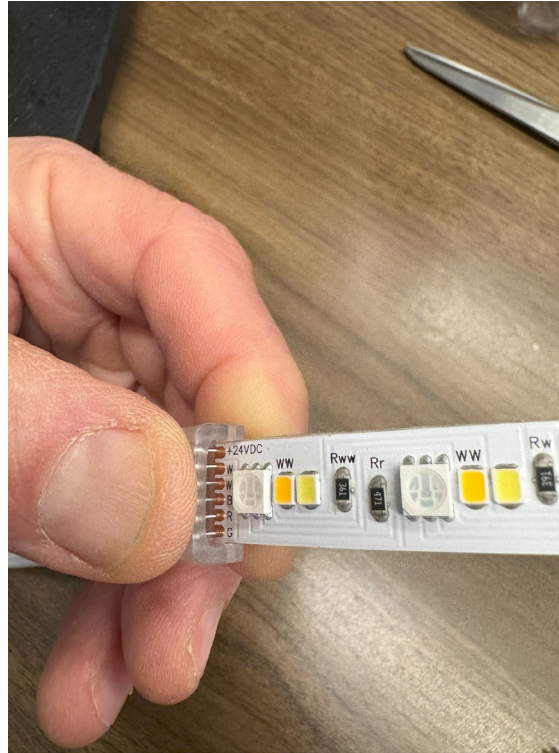
Stage the 6-pin wire, the wire-to-tape connector and the beginning of the next tape run. Make sure the 24VDC+ lines up with the right wire and the connector contacts will line up properly with the copper markings.



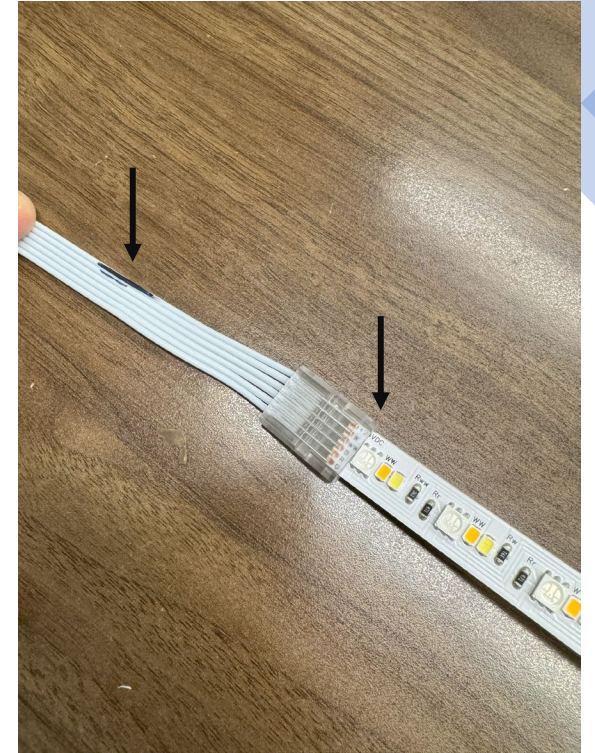
Insert the wires in the holes, again making sure that they are not tangled.



Clamp down by hand or with wire pliers to secure.



Line-up the copper marks to the pins of the connector and clamp down.



Confirm that the VDC24+ should be lined up to the black marker indicator.