



Certificate of Analysis

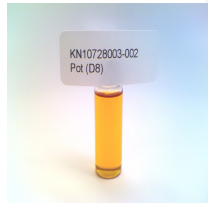
Sample: KN10728003-002
Harvest/Lot ID: 0721006990
Seed to Sale# N/A
Batch Date: N/A
Batch#: 0721006990
Sample Size Received: 4 ml
Total Weight/Volume: N/A
Retail Product Size: 1 ml
Ordered : 07/26/21
sampled : 07/26/21
Completed: 07/29/21 Expires: 07/29/22
Sampling Method: SOP Client Method

Jul 29, 2021 | Everest

1901 Avenue of the Stars, 2nd Floor,
Los Angeles, CA, 90067

PASSED
Page 1 of 1

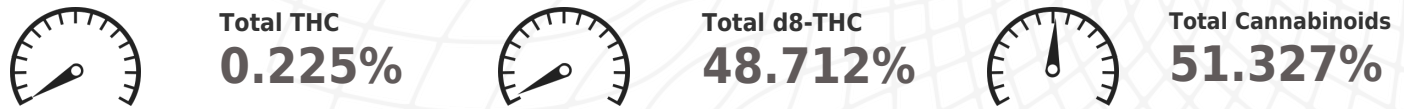
PRODUCT IMAGE



SAFETY RESULTS

								
Pesticides NOT TESTED	Heavy Metals NOT TESTED	Microbials NOT TESTED	Mycotoxins NOT TESTED	Residuals Solvents NOT TESTED	Filtration NOT TESTED	Water Activity NOT TESTED	Moisture NOT TESTED	Terpenes NOT TESTED

CANNABINOID RESULTS



	CBDV	CBDa	CBGA	CBG	CBD	THCV	CBN	D9-THC	D8-THC	CBC	THCA
%	0.0120	<0.010	0.0150	0.0660	2.1450	0.0110	0.0300	0.2250	48.7120	0.1070	ND
mg/g	0.1200	<0.010	0.1500	0.6600	21.4500	0.1100	0.3000	2.2500	487.1200	1.0700	ND
LOD	0.0010	0.0010	0.0010	0.0010	0.0010	0.0010	0.0010	0.0010	0.0010	0.0010	0.0010
%	%	%	%	%	%	%	%	%	%	%	%

Cannabinoid Profile Test

Analyzed by 113	Weight 0.205g	Extraction date : 07/28/21 10:07:17	Extracted By : 946
Analysis Method -Expanded Measurement of Uncertainty: Flower Matrix d9-THC:12.7%, THCa: 9.5%, TOTAL THC 11.1%. These uncertainties represent an expanded uncertainty expressed at approximately the 95% confidence level using a coverage factor k=2 for a normal distribution.		Reviewed On - 07/29/21 09:54:13	Batch Date : 07/28/21 09:51:06
Analytical Batch -KN001148POT Instrument Used : HPLC E-SHI-008 Running On :			
Reagent 120320.R02 072621.R01 071421.R01	Dilution 40	Consums. ID 94789291.217 12123-046CC-046	

Full spectrum cannabinoid analysis utilizing High Performance Liquid Chromatography with UV detection (HPLC-UV). (Method: SOP.T.30.050 for sample prep and Shimadzu High Sensitivity Method SOP.T.40.020 for analysis.). *Based on FL action limits.

This report shall not be reproduced, unless in its entirety, without written approval from Kaycha Labs. This report is an Kaycha Labs certification. The results relate only to the material or product analyzed. Test results are confidential unless explicitly waived otherwise. Void after 1 year from test end date. Cannabinoid content of batch material may vary depending on sampling error. IC=In-control QC parameter, NC=Non-controlled QC parameter, ND=Not Detected, NA=Not Analyzed, ppm=Parts Per Million, ppb=Parts Per Billion. Limit of Detection (LoD) and Limit Of Quantitation (LoQ) are terms used to describe the smallest concentration that can be reliably measured by an analytical procedure. RPD=Reproducibility of two measurements. Action Levels are State determined thresholds for human safety for consumption and/or inhalation. The result >99% are variable based on uncertainty of measurement (UM) for the analyte. The UM error is available from the lab upon request. The "Decision Rule" for the pass/fail does not include the UM. The limits are based on F.S. Rule 64-4.310.

Sue Ferguson
Lab Director
State License # n/a
ISO Accreditation #
17025:2017


Signature

07/29/21
SIGNED ON