



TYPE 25-10 SAFETY



HIGH-PRESSURE LIFTING BAGS
8 bar (116 psi) (FLAT BAGS)

8
FLAT

EN 13731 certified

Stackable up to 3 bags

Superb stability

Flat surface

TECHNICAL DATA

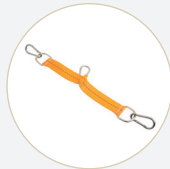
TYPE	PART NUMBER	DIMENSIONS			WEIGHT	WORKING PRESSURE	AIR REQUIREMENT	MAX. LIFTING CAPACITY	MAX. LIFTING HEIGHT	MAX. LIFTING CAPACITY AT MAX. LIFTING HEIGHT
		LENGTH	WIDTH	HEIGHT						
		[cm] / [inch]	[cm] / [inch]	[cm] / [inch]						
SFB-K2/17	282314	45 / 18"	45 / 18"	2.5 / 1"	5.1 / 11.3	8 / 116	200 / 7.1	13.5 / 14.9	17 / 6.7	2.3 / 2.5
SFB-K 7/17	519883	55 / 22"	55 / 22"	2.5 / 1"	7.3 / 16	8 / 116	224 / 7.9	21.1 / 23.2	17 / 6.7	6.7 / 7.4
SFB-K 10/17	519884	61 / 24"	61 / 24"	2.5 / 1"	9.2 / 20	8 / 116	350 / 12.4	25.2 / 27.7	17 / 6.7	9.5 / 10.5
SFB-K 20/17	519885	78 / 31"	78 / 31"	2.5 / 1"	14.5 / 32	8 / 116	520 / 18.4	44.6 / 49.1	17 / 6.7	20.2 / 22.2
SFB-K 33/17	519886	91.5 / 36"	91.5 / 36"	2.5 / 1"	20.6 / 45	8 / 116	810 / 28.6	64 / 70.4	17 / 6.7	33.3 / 36.6

ACCESSORIES

(SUITABLE FOR FLAT BAGS ONLY)



TRIPLE DEADMAN CONTROLLER METAL BOX
 8 bar (116 psi)
 4.0 kg (8.8 lbs)
 544124

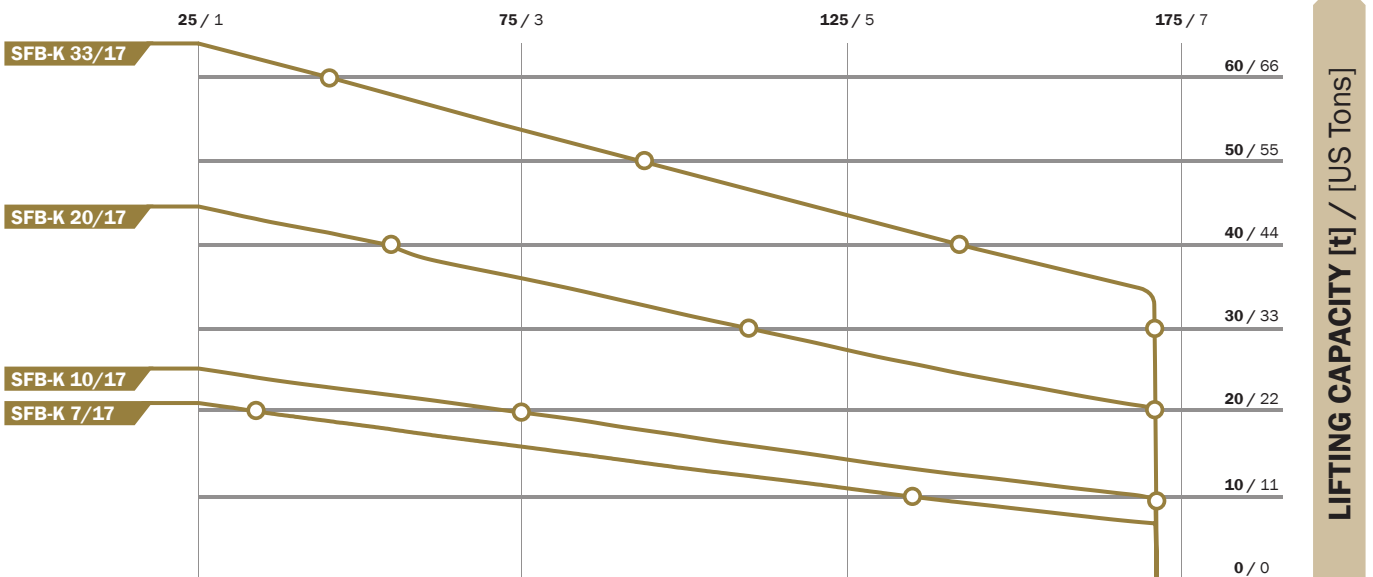


SET OF TRIPLE FLAT BAG CONNECTORS, ORANGE
 (4 PCS PER SET)
 0.6 kg (1.3 lbs)
 530545



SET OF DUAL FLAT BAG CONNECTORS, YELLOW
 (4 PCS PER SET)
 0.4 kg (0.88 lbs)
 529480

LIFTING HEIGHT [mm] / [inch]





TYPE 25-10 SAFETY



HIGH-PRESSURE LIFTING BAGS 10 bar (145 psi) (FLAT BAGS)

10
FLAT

EN 13731
certified

Increased
lifting capacity

Compatible with
8 bar (116 psi) accessories

Heavy
duty

TECHNICAL DATA

TYPE	PART NUMBER	DIMENSIONS			WEIGHT	WORKING PRESSURE	AIR REQUIREMENT	MAX. LIFTING CAPACITY	MAX. LIFTING HEIGHT	MAX. LIFTING CAPACITY AT MAX. LIFTING HEIGHT
		LENGTH	WIDTH	HEIGHT						
		[cm] / [inch]	[cm] / [inch]	[cm] / [inch]	[kg] / [lbs]	[bar] / [psi]	[l] / [cu./Ft.]	[t] / [US Tons]	[cm] / [inch]	[t] / [US Tons]
SFB-H 2.5/17	282432	45 / 18"	45 / 18"	2.5 / 1"	5.2 / 11.5	10 / 145	220 / 7.8	16.6 / 18.3	17 / 6.7"	2.5 / 2.8
SFB-H 8/17	291294	55 / 22"	55 / 22"	2.5 / 1"	7.4 / 16	10 / 145	280 / 9.9	26.4 / 29	17 / 6.7"	8.1 / 8.9
SFB-H 12/17	291295	61 / 24"	61 / 24"	2.5 / 1"	9.2 / 20	10 / 145	437.5 / 15.5	31.5 / 34.7	17 / 6.7"	11.9 / 13.1
SFB-H 25/17	291296	78 / 30"	78 / 30"	2.5 / 1"	14.5 / 32	10 / 145	650 / 23	55.8 / 61.3	17 / 6.7"	25.3 / 27.8
SFB-H 42/17	291297	91.5 / 36"	91.5 / 36"	2.5 / 1"	20.5 / 45	10 / 145	1012.5 / 35.8	80 / 88	17 / 6.7"	41.6 / 45.8

ACCESSORIES

(SUITABLE FOR FLAT BAGS ONLY)



TRIPLE DEADMAN CONTROLLER METAL BOX
10 bar (145 psi) -
4.0 kg (8.8 lbs)
291298



SET OF TRIPLE FLAT BAG CONNECTORS, ORANGE
(4 PCS PER SET)
0.6 kg (1.3 lbs)
530545



SET OF DUAL FLAT BAG CONNECTORS, YELLOW
(4 PCS PER SET)
0.4 kg (0.88 lbs)
529480

LIFTING HEIGHT [mm] / [inch]

