



JAIPUR WATCH COMPANY

102, Roop Kamal Building,
C-55, Sarojini Marg,
Jaipur, Rajasthan 302001

+91 141 404 7676

www.jaipur.watch

[f JaipurWatchCompany](https://www.facebook.com/JaipurWatchCompany) [@ JaipurWatchCompany](https://www.instagram.com/JaipurWatchCompany)

TAJ PALACE
(Boutique)

Taj Palace, 2, Sardar Patel Marg,
Diplomatic Enclave, Malcha, New Delhi

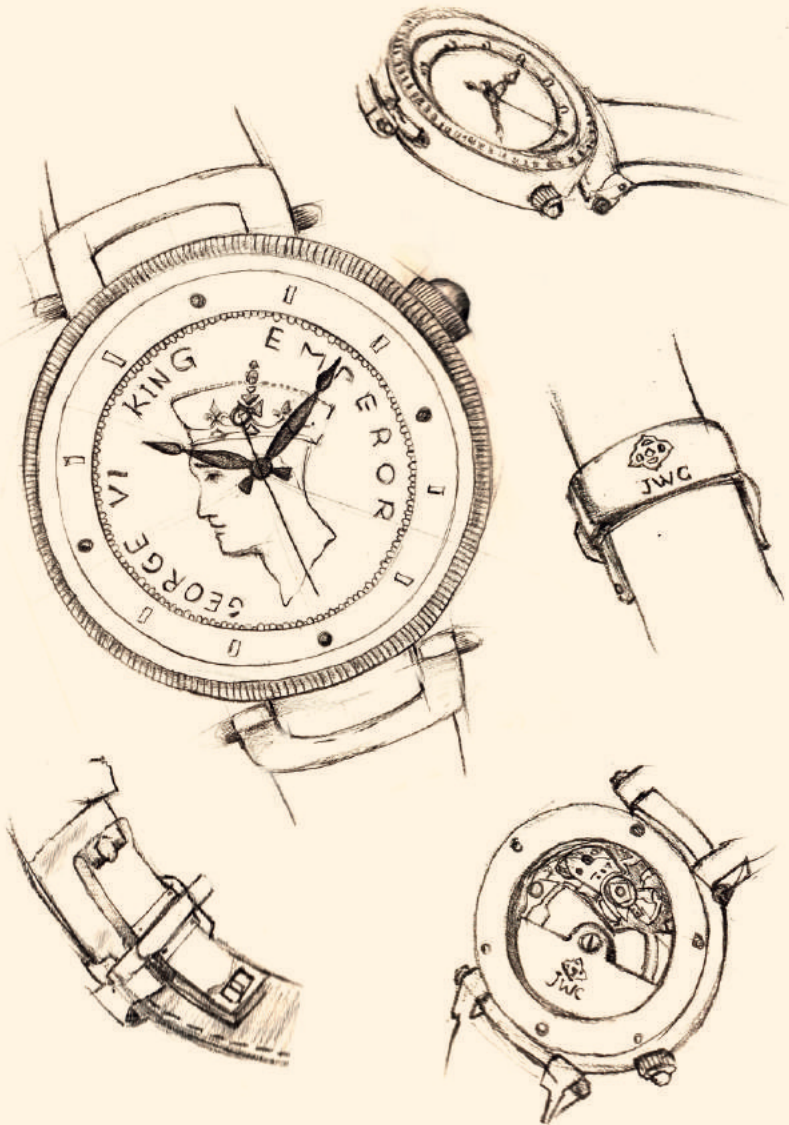


JAIPUR WATCH COMPANY
The Timeless Time





JAIPUR WATCH COMPANY



*“In every little
nuance of each timepiece we
create, there resides the soul of
the artisan”*

Gaurav Mehta

PHILOSOPHY

Jaipur Watch Company is undeniably India's first bespoke Watch Company with an exclusive distinctiveness. The brand endeavors to offer elegant timepieces for the discerning across the globe. Jaipur Watch Company handcrafts limited edition selection of timeless pieces that exude tradition with a subtle hint of contemporary design. Each watch is handcrafted meticulously to be cherished as heirlooms that are worthy of being passed down generations.

The idea that a timepiece should be the keeper of history is a philosophy that permeates the core of the Jaipur Watch Company since its establishment in 2013. This core ethos is then manifested either in artistic expression that is derived from History through our various Ready-To-Wear lines, or through a deeply personal creation that is a materialization based on an insight that a client provides us whilst commissioning one of our Bespoke and fully Customizable timepieces. Either way, absolutely faultless mechanical watchmaking craftsmanship & standards are adhered to, accompanied by the assurance that a Jaipur Watch Company timepiece will be a signature statement unlike any other. All our products are Made in India. Driven by passion, commitment, history, understanding people, and, time!



THE VISIONARY

As a young history-obsessed child, Gaurav Mehta found endless joy in historic Coins & Stamps. To this young, curious learner, they unlocked a yet undiscovered treasure-trove of magnificent tales. Stories of his own state of Rajasthan, of the glorious past of his own ancient homeland India. Always one to tinker around with his father's tools, Gaurav had this ingenious idea of fashioning his own, unique, one-of-a-kind timepiece. An expression of himself, an extension of his interests, one that would become, his signature. This led to the very first Coin Watch, fashioned, albeit a bit crudely using some rather rudimentary methods and a loaner-watch. The idea that was born however, would go on to completely redefine Luxury Watches.

Several years on, having finished his education from a sought-after UK college in Risk Management, Gaurav returned to India. he hadn't forgotten his very first Coin Watch. In fact, the idea had gestated and taken form with a renewed passion. Amid long-established doyens of luxury watch-making, Gaurav Mehta, armed with sheer fervor & gumption, established Jaipur Watch Company. A tale, that has compelled the horological world to sit up and take notice, its exquisitely original timepieces, acknowledge, aspired to, and patronized by some of the world's most discerning clientele.

Bringing a little bit of his birth-state Rajasthan to the world, Gaurav Mehta has steadfastly and singularly put India on the horological world map. Ready-to-wear and entirely Customizable timepieces that exude Timeless Time!



Bespoke Watch



When a Jaipur Watch Company timepiece is commissioned, it opens up an entirely new world of collaborative creativity. Because the bespoke timepiece will be a direct and distinctly personal expression of the client, it is from them, that we expect, direction, inspiration, insight. The Jaipur Watch Company will make available every resource imaginable to manifest our client's vision into a one-of-a-kind watch that is an amalgam of the most luxurious materials, precious embellishments, and innately personal stories. A veritable feast of options is presented and even imagination cannot curtail the limits of your vision. Our team of designers go the extra mile to ensure that your vision isn't just met but exceeded. To present you with a timepiece that is the ultimate statement of individuality. Personal perfection.



The client, a devotee of Lord Ganesha, wanted a Gold watch for himself, featuring a Gold Ganesha figurine as the dial but at the same time he did not want any hole to be punched in the figurine. He also wanted his signature to be engraved on the watch back.

You will find that the hands of the clock have been incorporated beautifully without tampering the figure at all.

Case OD: 40mm

Length: 46.47mm

Thickness: 9.9mm

Movement: ETA Automatic

Back Cover: Screw Down (Gold)

Gold Crown

Crystal: 32mm (Sapphire)

Dial Opening: 31.2mm

Bezel: Studded with Diamonds

Dial: Hand-crafted 22ct Gold Ganesha,

Hands behind the figurine

Strap: 22mm



THE GANESHA WATCH

The query was for a graceful golden watch with floral designs on the dial loaded with tapered baguette sapphire stones and diamonds. The beautiful flower design on the dial has been painted by a Padmashree Award winning artist.

Case: 43mm x 43mm

Thickness: 13.3mm

Movement: NH05 Automatic

Back Cover: Screw Down (Gold)

Crystal: Sapphire

Bezel embedded with Baguettes

Dial: Flowers on the dial are painted

by a Padmashree Artist



VIRTUOSITY WATCH

The client requested a watch with an antique coin as the dial, to be combined with a skeleton movement, along with the sun and moon complications.

Case OD: 44mm

Length: 50mm

Thickness: 10.81mm

Movement: Skeleton Movement

Back Cover: Screw Down (Gold) and Coin Embedded

Gold Crown with Blue Sapphire

Crystal: 39mm (Sapphire)

Dial Opening: 38mm

Machined Pattern Bezel

Dial: Half Sovereign Coin

See-through Skeleton Movement

Day and Night Complications

Strap: 22mm



SKELETON WATCH

The client wanted to gift a gold watch to her husband, as a birthday surprise. She wanted a look apart from the conventional round watches, with her husband's initials on the watch dial, along with some text inscribed on the watch back.

Case: 35mm x 25.5mm, Length: 42mm

Thickness: 9.2mm

Movement: Seiko NH05A

Back Cover: Screw Down (Gold)

Gold Crown

Crystal: 26mm x 17mm (Sapphire)

3 Step Bezel

Dial: Patterned White Gold

Strap: 18mm



CLASSIQUE WATCH

Exclusively designed on a client's request, this sparkling flower watch is a hit with all the bling lovers. It is bejewelled with patterns of your choice, like flowers in this one, but still looks elegant on your wrist. What's better than a normal flower? A flower made with diamonds!

Case OD: 25mm

Thickness: 6.5mm

Overall OD: 34mm

Movement: Swiss Ronda High Hand

Back Cover: Hidden-type Gold, O-ring, Screw Fit

Crown: Gold "Hidden-type" between 3 & 4 Hours

Crystal: 16mm (Sapphire)

Bezel: 27 Special Machined Baguettes

Dial: 73 Round Stones (Snow Setting)

Strap: 14mm



SPARKLING FLOWER WATCH

When it comes to religious figures, we customise the watches not just to give you a way of carrying your spiritual idol with you, but also whatever teaching or quote of theirs you'd like to read every time you look at the time. This beautiful piece does just that with its small Ganesha and mantra incorporated with a small dial on the side.

Case: 40mm, Length: 48mm

Thickness: 13.3mm

Movement: NH05 Automatic

Back Cover: Screw Down (Embedded Coin and Engraved)

Gold Crown with Ruby

Crystal: 32 x 32mm (Sapphire)

4 Step Bezel Embedded with Diamonds

Dial Opening: 31mm

Dial: Ruby Ganesha Figurine, MOP Sub-dial

Strap: 22mm



RUBY GANESHA WATCH

A request of a gold watch was received at our end with a half sovereign gold coin as the dial, which was to be surrounded by the pillars of the Ashoka Chakra, thus giving the watch an antique look.

Case OD: 42mm

Thickness: 10mm

Movement: ETA Automatic

Back Cover: Screw Down (Gold) & Coin Embedded

Crown with Inverted Blue Stone of Dia 4mm

Crystal: 37mm (Sapphire)

Dial Opening: 35mm

Dial Dia: 38mm

Machined Pattern Bezel

Dial: Stamped Pattern, White MOP with Enamel Cavity-filled,

Centre 19mm Gold Half Sovereign Coin, Blue Arabics Printed

Strap: 22mm



ANTIQUA WATCH

If you are looking to commemorate your love with your partner and want a sweet reminder to stay with you or them then this Eternal watch is perfect for you. We take pictures and quotes of your choice and convert them into an embedded design in the dial with the utmost precision. The client provided us with a photograph which we used along with enamelled text to create the dial of this gold watch.

Case OD: 37mm

Movement: Swiss Quartz Movement

Back Cover: Screw Down (Gold)

Crystal: Sapphire

Textured Bezel

Sapphire Stone on the Crown

Dial: Specially Made Embossed Dial
with the Couple's Image

Strap: 20mm



ETERNAL WATCH

Our watches are a great way to seal your prized memorabilia in something beautiful. This watch is a great example of one such gold coin with Queen Victoria which was passed down to our client by her ancestors. We make sure to carve a watch without any damage to the product inside and incorporate the hours of the hand accordingly.

Case OD: 39mm

Movement: Swiss Quartz Movement

Back Cover: Screw Down (Gold)

Crystal: Sapphire

Bezel: Textured

Crown: Gold

Dial: Diamond Markings

Hands Run Behind the Coin

Strap: 20mm



ELIZ WATCH

This watch is the best example of our company's efforts of getting you the most personalized watches. It is a classy white gold watch made using a 1-Oz American Silver Eagle Bullion coin and we made sure to include our client's wish of having both sides of the coin visible, thus turning the coin into a lid on the top which when opened with the push-button, reveals both sides of the coin and the dial inside.

Case OD: 44mm

Movement: Open-Heart Movement

Back Cover: Screw Down (Coin Embedded)

Crystal: Sapphire

Crown: Integrated Crown for Lid-opening
and Other Functions

Dial: Textured White Gold Dial with an

Open-Heart Window

Strap: Handmade, 22mm



LIBERTY WATCH

The client wanted a high relief figurine of Lord Ganesha with a particular pose provided by the client himself, in white gold. He also requested for a devotional inspired engraving on the edges of the dial.

Case OD: 44mm

Movement: Citizen Miyota 9015

Back Cover: Transparent, White Gold

White Gold Crown

Crystal: Sapphire

Bezel: White Gold Case Studded

With 1.25ct G VVS1 Diamonds

Dial: Specially Engraved White Gold Dial

Strap: 22mm



WHITE GOLD GANESHA WATCH

Being quite religious, our client wanted a portrayal of Lord Ganesha posed on a lotus flower with ideation from Indian temples. The hands of the clock are engulfed uniquely to relate with the deity.

Case OD: 44mm

Movement: ETA 6498

Back Cover: Transparent, White Gold

Crown: White Gold

Crystal: Front and Back Sapphire

Bezel: Hand Engraved

Dial: Hand Engraved Anodized Lord

Ganesha Figurine

Strap: 22mm



TEMPLE GANESHA WATCH

We made sure to include our clients wish of carrying the spiritual idol lord hanuman unveil inside a temple. The dial was well conceived to show a skeletonized ETA movement. This is exactly what you want from a piece like this because it is all about showing off the dial.

Case OD: 44mm

Movement: ETA 6498

Back Cover: Transparent

Crown: Domed-type

Crystal: Front and Back Sapphire

Bezel: Hand Engraved

Dial: Hand Engraved Anodized

Lord Hanuman Figurine

Strap: 22mm



HANUMAN WATCH

It was a genius idea to combine coins and watches to create a timepiece of this magnitude and superlative technicality. It incorporates a 19 centuries old Lord Shiva Coin and was fabricated with The Watch Time India magazine.

Case OD: 42mm

Thickness: 9.2mm

Movement: ETA 2824-2

Back Cover: Screw Down (White Gold)

Crown: White Gold

Crystal: Sapphire

Bezel: Textured

Dial: Specially Engraved Dial with 19

Centuries Old Coin, Hindi Numbers

Strap: 22mm



SHIVA WATCH

A couple wanted a set of watches with a mix of white gold and rose gold, combined with Mother of Pearl, for their 25th Wedding Anniversary. They asked for textured dials and diamonds on the female version of the watch.

Male

Case OD: 28 x 43mm,

Movement: NH05A Seiko

Back Cover: White Gold

Crystal: Sapphire

Dial: Yellow Gold,

Mother of Pearl

Strap: Genuine Leather

Female

22 x 34mm

ETA 2671

White Gold

Sapphire

Yellow Gold, 12 Diamonds,

Mother of Pearl

Genuine Leather



SOUL MATE

This watch is the best example of simplicity and elegance curated with a hue of gold combining it with mother of pearl dial. We made sure to include our client's wish of having diamonds and precious stones on it. The ornaments are finely detailed and the result is a stunning piece of art on the dial.

Case OD: 39mm, Length: 4mm

Thickness: 6mm

Movement: Swiss Quartz Movement 1063

Back Cover: Screw Down (Gold), Engraved Signature

Crown: Sapphire Stone on the crown

Crystal: 31mm, Sapphire

Bezel: Textured

Dial: MOP Dial Studded with 1ct VVS 1 Diamonds
and Precious Stones

Strap: 20mm



LUXURIA WATCH

The client was more inclined towards a unique decagon shaped watch rather than a usual one, which is wrapped in an eye catching enamel marking on the dial along with an Isle of Man gold coin. There is also a good amount of finishing, just in a really utilitarian sense.

Case OD: 41mm

Movement: Japanese Miyota 9015

Back Cover: Screw Down (Gold),

Coin Embossed

Crown: Gold Crown

Crystal: Sapphire

Bezel: Decagon Shaped with

Faceted Sides

Dial: Isle of Man Gold Coin with

Enamel Markings

Strap: 20mm



MONARCH WATCH

Another big hit with our clients are watches with great ideals and beliefs, Mr. Barack Obama, the former President of the United States of America denotes exclusivity and a distinctive personality. The client's beliefs, uniqueness and ideologies commissioned Jaipur Watch Company to create this bewildering watch.

Case OD: 39mm

Movement: Japanese Miyota 2039

Back Cover: Screw Down (Gold)

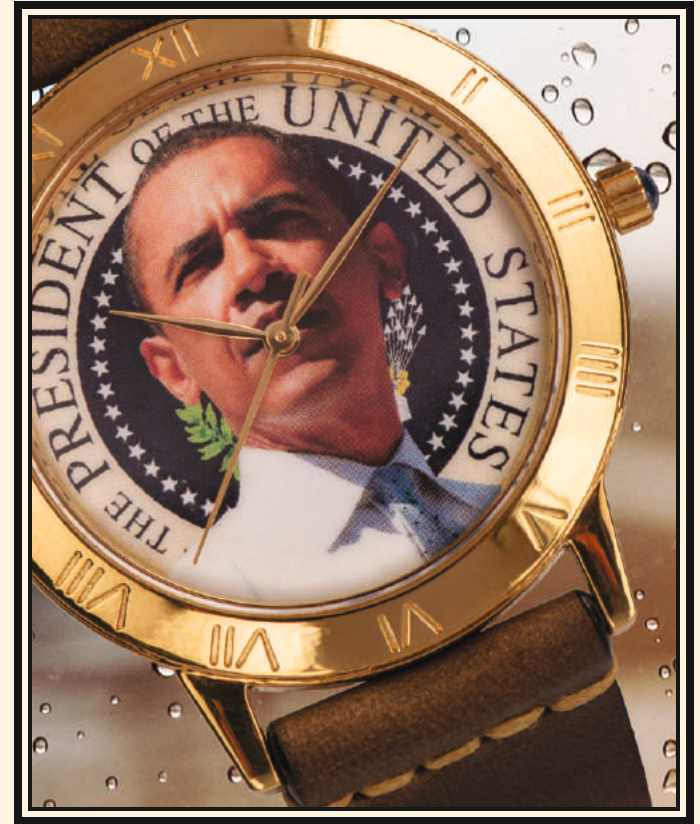
Crystal: Sapphire

Crown: Sapphire Stone on Crown

Bezel: Roman Numeric Markings on the Bezel

Dial: Digitally Printed

Strap: 20mm



OBAMA WATCH

Jaipur Watch Company got an opportunity to create a Bespoke gold watch using a 1947 One Rupee Coin. This watch was to be created by using this particular coin. The Coin is very significant because it was the last coin minted under the British Rule, it was minted only in 1946(second half) and 1947 and the tiger displayed on the coin bears a very close resemblance to the Make in India logo.

Case OD: 39mm

Movement: Swiss Quartz

Back Cover: Screw Down (Gold)

Crystal: Sapphire

Dial: One Rupee Certified British

India Coin (1946-47)

Strap: 20mm



ONE RUPEE WATCH

Highly inspired from our Peacock Watch Collection, the client asked for the same dial in a super slim 18 ct gold case. A special request was to encrust a diamond at 6' o clock position.

Case OD: 39mm

Movement: Swiss Quartz

Back Cover: Screw Down (Gold)

Crown: Domed Type

Crystal: Sapphire

Bezel: Textured Bezel

Dial: Real Fallen Peacock Feather

Strap: 20mm



PEACOCK GOLD WATCH

Watches like this one look priceless if you are looking to gift someone. A classy, 18ct gold watch is what the client wanted along with the receivers name and the family religious symbol on the face of the watch. The symbol and letters on the dial was embraced throughout with solid gold. A gold bracelet was designed for the watch.

Case OD: 39mm

Movement: Ronda Swiss Quartz 503

Back Cover: Screw Down (Gold)

Crown: Gold Crown

Crystal: Sapphire

Dial: Gold Markings on the Dial

Strap: Gold Bracelet



RAGHU CHACHA WATCH

Combining together innovation and credence, this beautiful piece is an 18 ct gold timepiece carrying the spiritual ideal of our client. He requested us to create this timepiece with an intention of passing it to the generations to follow as an heirloom.

Case OD: 40mm

Movement: ETA Automatic

Back Cover: Screw Down (Gold)

Crown: Gold Crown

Crystal: Sapphire

Bezel: Studded with Diamonds

Dial: Hand-crafted 22ct Gold Sai Baba,

Hands Behind the Figurine

Strap: 22mm



SAI BABA – I WATCH

Sai Baba of Shirdi, also known as Shirdi Sai Baba was an Indian spiritual leader who is regarded by his disciples as a saint, a fakir, a satguru and an incarnation of God. The aficionado wanted to keep his leader with him at all times and hence asked us to commission this timepiece.

Case OD: 39mm

Movement: Swiss Quartz Movement

Back Cover: Screw Down (Gold)

Crystal: Sapphire

Dial: Textured Dial with Embossed

Sai Baba Figure, MOP Sub-Dial

Strap: 20mm



SAI BABA – II WATCH

Like scorpions who are known for being the best lovers so is our client who got this exquisite watch designed for his beloved. He wanted to commemorate his love with her partner and want a sweet reminder to stay with her so he told us her partner's birth date, sun sign, name initials and favourite number to be incorporated on the watch.

Case OD: 39mm

Movement: Swiss Quartz

Back Cover: Screw Down (Gold), Engraved

Crystal: Sapphire

Bezel: Textured Bezel

Dial: MOP Dial with Gold Coin

Strap: 20mm



SCORPION WATCH

The 18 ct gold watch was supposed to have a unique texture on the bezel along with a Gold Sovereign Coin. The second side of the coin was to be embossed on the back of the watch as per the request. We were also asked to place a diamond at the 6'o clock position.

Case OD: 44mm

Movement: Swiss Made ISA 2334 Movement

Back Cover: Screw Down (Gold), Embossed

Crown: Gold Crown

Crystal: Sapphire

Bezel: Textured Bezel

Dial: Gold Sovereign Coin

Strap: 22mm



SOVEREIGN WATCH

A blend of classic & professional decagonal shaped timepiece with faceted sides. The company's logo is made in gold with the client's favourite quote engraved on the dial.

Case OD: 41mm

Movement: Japanese Miyota 9015

Back Cover: Screw Down (Gold)

Crown: Gold Crown

Crystal: Sapphire

Bezel: Decagon Shaped with Faceted Sides

Dial: Textured Dial with Gold Cut-out Logo

Strap: 20mm



CARPE DIEM

A unique cushion shaped was commissioned to Jaipur Watch Company which was supposed to have a special design and textured dial along with an Isle of Man Gold Coin on the dial as well as on the back.

Case OD: 40mm x 40mm

Thickness: 9.80mm

Side: Diamond

Machined Pattern

Movement: ETA automatic

Back Cover: Screw Down (Gold)

Coin Embossed

Crown: Knurled Screw Down Type

Crystal: Sapphire

Bezel: Diamond Cut Fluted

Decorative Screw Fitted

Dial: Machined Patterned Dial with Isle
of Man Gold Coin of Size 22.05 mm

Strap: 20mm



SUZERAIN WATCH

The watch- Yuga, an era within 4 age cycle, exhibits the watch engine that works behind the dial. Designed with an attention to detail this magnificent watch is crafted in 18-ct gold and studded with 110 VVS 1 diamond & 125 hand-picked sapphire stones engraved on the edges.

Case OD: 42mm

Thickness: 10.7mm

Length: 50mm

Movement: Skeleton Movement

Back Cover: See-through Screw Down, Gold

Crown: Gold Crown

Crystal: Front and Back Sapphire

Bezel: Studded with VVS1 Diamonds and Sapphire Stones

Dial: Sun and Moon Complications

Strap: 22mm



YUGA WATCH

The client wanted a gold watch for himself for his 50th birthday. He has a religious belief in Prophet Muhammed and Ya Ali. So the dial has Ya Ali written in gold in a Khufi script and the hands depict Muhammed when the time is set to 6'o clock.

Case OD: 42mm Gold, Cushion-shaped

Movement: Japanese Miyota 9015

Back Cover: Screw Down, Engraved

Crystal: Front and Back Sapphire

Bezel: Diamond Cut Fluted, Decorative Screw Fitted

Dial: Black MOP, Gold Markings and Hands

Strap: Mesh Bracelet



YA ALI WATCH

The three gold coins on this sumptuous watch evokes the time of British era when Queen Elizabeth was the Queen consort of King George VI until his death in 1952. Upon client's demand the watch was created in antique silver finish.

Case OD: 31mm, Silver

Movement: Swiss Quartz

Back Cover: Silver Back

Crown: 3 Sapphire Stones

Crystal: Sapphire

Bezel: Hand Engraved

Dial: 3 Gold Sovereign Coins

Strap: Silver Bracelet



QUEEN WATCH

We at Jaipur Watch Company takes pride in being featured as the first production enterprise to innovate in 3D watches crafted out of stainless steel. Not only 3D printing is a cost-effective technology but also it gives exclusivity to our clients thereby restricting mass-production process.

Case OD: 40mm

Thickness: 8mm

Movement: Swiss Quartz

Back Cover: Screw Down

3D Printed

Crown: 3D Printed

Crystal: Sapphire

Bezel: Textured

3D Printed

Dial: 3D Printed

Strap: 20mm



3D PRINTED WATCH (Quartz)

We at Jaipur Watch Company takes pride in being featured as the first production enterprise to innovate in 3D watches crafted out of stainless steel. Not only 3D printing is a cost-effective technology but also it gives exclusivity to our clients thereby restricting mass-production process.

Case OD: 40mm

Thickness:10mm

Movement: Japanese Miyota 9015

Back Cover: Screw Down

3D Printed

Crown: 3D Printed

Crystal: Sapphire

Bezel: Textured

3D Printed

Dial: 3D Printed

Strap: 22mm



3D AUTOMATIC WATCH

Jaipur Watch Company has customised unique & heritage watches using Indian postage stamps dating back to the year 1937-1940 as the dial. The watch has lotus flower engraving similar to the reverse side of the coin of the same era coupled with portrait of the King George VI. Watches like these are the standout timepieces that depict famous personalities from British history that carry forward a legacy.

Case OD: 33mm x 28mm

Thickness: 5mm, Lug to Lug: 41mm

Movement: Ultra Slim Swiss Movement

Back Cover: Screw Down

Engraved Stamp Design

Crystal: Sapphire

Bezel: Side Cut Pattern

Dial: King George VI Postal Stamp (1937-40)

Strap: 18mm



STAMP WATCH

A merger of classic & professional decagonal shaped timepiece with faceted sides. The case as well as the dial of the watch is made in rose gold. The dial is engraved with an intricate pattern using the Guilloche hand engraved technique. Guilloche is an ancient art of creating exceptionally detailed patterns. In the 18th century, Guilloche was used in the watchmaking industry. A handmade leather strap gives the watch a very unique look.

Case : 40mm 18 ct Gold

Movement : Japanese Miyota 9015

Back Cover : Screw Down (Gold)

Crown : Gold Crown

Crystal : Sapphire

Bezel : Decagon-shaped with Faceted Sides

Dial : Gold Dial using Guilloche Hand Engraving Technique

Strap : 20mm Handmade Leather strap



GUILLOCHE WATCH

This 39mm Watch showcases a 22 ct Hand Engraved Gold Ring and a Skeleton mechanism on the dial. It took us about 60 days just to manufacture the hand engraved stainless steel case. The watch has a handmade leather strap.

Case : 39mm Stainless Steel

Movement : Citizen 8N24 Automatic

Back Cover : Screw Down

Crown : Stainless Steel

Crystal : Sapphire

Bezel : Hand Engraved

Dial : 22 ct Hand Engraved Gold Ring

Strap : 22mm

Water Resistance : 5ATM



MIDAS TOUCH WATCH

The client, being a musician had an old Veena (a string instrument) which has some engravings over it. We were asked to copy that engraving on a watch dial and the hands were also to be in the shape of a Veena. This watch was to be paired with a similar engraved female version studded with diamonds.

Case : 44mm Hand Engraved

Movement : ETA 6497

Back Cover : Sapphire Crystal

Crown : Stainless Steel

Crystal : Sapphire

Bezel : Hand Engraved

Dial : Hand Engraved Dial

Strap : 24mm

Water Resistance : 5ATM



MUSICALLY ENGRAVED-I WATCH

The client, being a musician had an old Veena (a string instrument) which has some engravings over it. We were asked to copy that engraving on a watch dial and the hands were also to be in the shape of a Veena. This watch was to be paired with a similar engraved male version.

Case : 39mm Hand Engraved

Movement : Swiss 503 Ronda Movement

Back Cover : Sapphire Crystal

Crown : Stainless Steel

Crystal : Sapphire

Bezel : 114 Black Diamonds, 110 White Diamonds

Dial : Hand Engraved Dial

Strap : 22mm

Water Resistance : 5ATM



MUSICALLY ENGRAVED-II WATCH

The tiniest watch made by the homegrown brand Jaipur Watch Company, is not for your wrist, but for your finger. A lovely combination of White Gold/ Yellow Gold/ Diamonds and Mother of Pearl.

Case: 24mm Gold

Movement: Ronda 1063

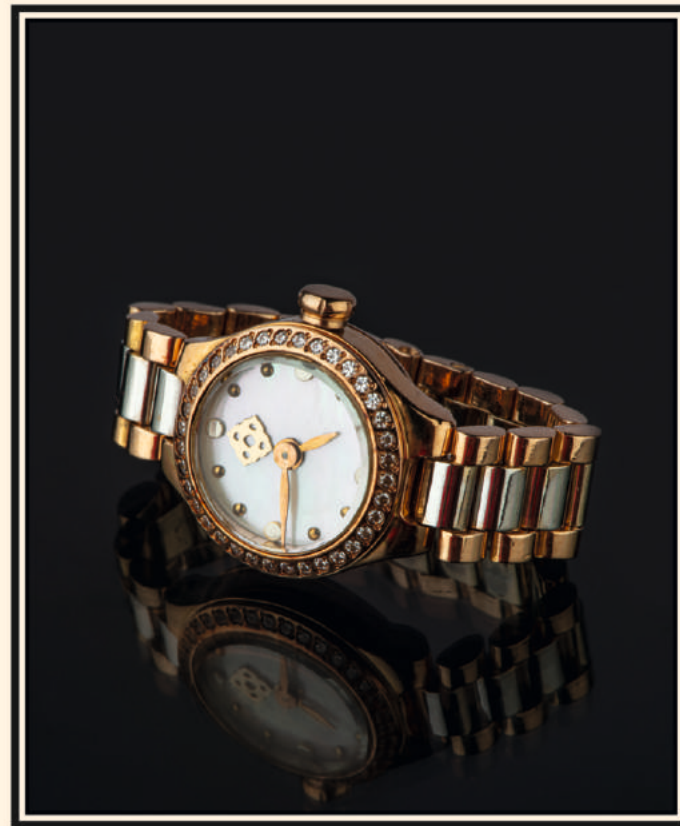
Crown: Gold Crown

Crystal: Sapphire

Bezel: 1ct Diamonds on the bezel

Dial: Mother of Pearl

Strap: Combination of White Gold & Yellow Gold



RING WATCH

We made sure to include our client's wish of carrying the spiritual Idol Sai Baba unveil inside a temple. The dial was well conceived to show a skeletonized ETA movement.

Case OD: 44mm

Movement: ETA 6498

Back Cover: Transparent

Crown: Domed-type

Crystal: Front and Back Sapphire

Bezel: Hand Engraved

Dial: Hand Engraved Anodized

Sai Baba Figurine

Strap: 22mm



SAI BABA ENGRAVED WATCH

This slender 4.5 mm thick watch with a gold case has an Engine-turned dial. The indices are also made out of gold. Sized at 32x25mm, the watch has an ultra slim Swiss movement. The watch is fitted with a handmade leather strap.

Case : 32x25mm 18 ct Gold

Thickness : 4.5mm

Movement : Swiss Ronda

Back Cover : Screw Down Gold

Crown : Stainless Steel

Crystal : Sapphire

Bezel : Ultra Slim

Dial : Engine-turned Dial with Gold Indices

Strap : 20mm Handmade Leather Strap



VERGE WATCH

Pret Watch



Started in 2013 with its Coin watch collection, the Brand endeavours to offer elegant timepieces for the discerning across the globe.

Jaipur Watch Company endeavours to amalgamate the panache of the modern with the regality of the ancient. Connoting stories through a watch dial, the Jaipur Watch Company is proficient in the art of watchmaking enhanced by uniquely embedded concepts like ancient coins, monograms, emblems, flags, insignia, motifs and more. Thus, bringing to life history and creating timepieces with intricate detailing and versatile belts.



The collection of hand-painted watches by Jaipur Watch Company, inspired by the traditional Ganjifa Paintings, sets the perfect example of handcrafted luxury curated by local skilled artisans. Each dial is unique and is a result of hours of patience and precision. From natural creations to mythology, each dial tells a different story, celebrating art and beauty. The essence of this collection comes from the idea that art never goes out of style.

Case: 43mm, Stainless Steel

Movement: Quartz

Crown: Gold Plated / Stainless Steel

Crystal: Sapphire

Dial: Hand-painted by Jaipur's Skilled Artisans

Strap: Genuine Leather



HAND PAINTED WATCHES

Made using The King George VI (1939-45 era) One Rupee Half Silver Coin, this stainless Steel Watch is a Limited Edition, comprising of a One Rupee Antique Coin as the Dial and houses a Citizen 1L32 Slim Quartz Movement. The Watch has a Sapphire Crystal and the winder has a Sapphire Stone. The Bezel of the watch bears a resemblance to traditional Indian design.

Size: 36 mm

Dial: Half Silver One Rupee Coin from British India Era (1939-45)

Water Resistance: 3 ATM

Case Material: Stainless Steel

Strap Material: Leather / Bracelet



IMPERIAL I WRISTWEAR

These self-winding or automatic watches are crafted with Miyota 8215 Movement from Citizen and have a power reserve of 50 hour. Imperial II houses an antique 70 year old King George VI coin. George VI was the last ruler of the British Empire and the first head of Commonwealth.

Case: 46mm Stainless Steel

Movement: Automatic 8215 Citizen Miyota

Crown: Matching Precious Stone on the Crown

Crystal: Front and Back Sapphire

Bezel: Inspired by Hand Crafted Design

Dial: Half Silver Certified British India Coin (1939-45)

Using Both Sides of the Coin as the Dial

Strap: Genuine Leather, Butterfly Clasp

Power Reserve: 50 Hours

Water Resistance: 50 Metres (5 ATM)

Colours: Red, Blue, Green, Black



IMPERIAL II AUTOMATIC WATCHES

The peacock feather watch embeds a real peacock feather in its dial to help its natural beauty shine. The watch amalgamates the essence of nature, the beauty of this majestic bird. It takes extreme patience and time to ensure getting the details right.

Case: 44mm

Movement: Japanese Quartz Movement

Crown: Gold Plated / Stainless Steel

Crystal: Sapphire

Bezel: Studded with Swarovski Crystals

Dial: Real Fallen Peacock Feather

Strap: Genuine Leather



PEACOCK WATCH I

Inspired from its first collection, the Peacock Watch II Collection brings to you a slim and sleeker version. Our craftsmen take about 15 days to complete one such dial.

Case: 42mm

Movement: Japanese Quartz Movement

Back Cover: Embossed Back

Crown: Gold Plated / Stainless Steel

Crystal: Sapphire

Bezel: Studded with Swarovski Crystals

Dial: Real Fallen Peacock Feather

Strap: Genuine Leather



PEACOCK WATCH II

This watch has a grand history attached to it and anyone wearing it sure feels like a king. It is a 500 unit limited edition watch based on the “One Paisa Coin” as its centerpiece. This 43 MM Timepiece ticks on a Swiss Machine which has been modified into a disc mechanism to keep the design aesthetics of the watch. The one paisa coin was the lowest denomination of British India Era and interestingly till 1942 this coin used to be a full coin. In the year 1943 in order to save metal and minting cost the British India government decided to punch a hole through the coin giving it a very unique look. A great gift for all who love to have a special story behind their accessories.

Case: 43mm

Movement: Swiss Made ISA 2334 Movement

Crown: Gold Plated / Stainless Steel

Crystal: Sapphire

Bezel: Inspired by Hand Crafted Design

Dial: One Pice (Paisa) Certified British India Coin (1939-45)

Strap: Genuine Leather

Water Resistance: 30 Metres (3 ATM)



KINGS WRISTWEAR

This mesmerizing and elegant artifact created under the banner of Jaipur Watch Company is made up of sturdy stainless steel body and is popular as a simulated antique steampunk accessory at either one's desk being a Table clock or being carried around as a Pocket watch. The watch features a skeleton dial on display through the front and back scratch resistant sapphire crystals.

Case: 50mm

Movement: Hand Winding Skeleton Movement

Crown: Gold Plated Crown

Crystal: Front and Back Sapphire

Bezel: Inspired by Coin Edge Design

Dial: See-through Skeleton Mechanism

Stand: Dual Tone Stand

Power Reserve: 50 hours



POCKET WATCH

Jaipur Watch Company created this line of Titanium watches keeping in mind that it had to be ultra-light and sturdy at the same time. There are 4 Diamonds around the One Paisa Coin inside the watch and comes with a Sapphire Crystal. There are 3 colours to choose from: Black, Blue and Green. The colors offered in the straps gives the watch a hip look which still complements the elegant dial in the centre.

Case: 34mm

Movement: Japanese Quartz

Crown: Precious Stone on the Crown

Crystal: Sapphire

Bezel: Sturdy Titanium Material

Dial: Half Silver Certified British

India Coin (1939-45), 4 Diamonds on the Dial

Strap: Genuine Leather

Water Resistance: 30 Meters (3 ATM)

Colour: Black, Green, Blue



TITANIUM WATCH COLLECTION

Limited to 200 units serial numbered the "Indian Pegasus" this watch comes with the first coin of The Republic of India, the One Paisa Galloping Horse Coin in the centre (Mintage Period 1950-55). The coin rests on a Carbon Fibre Dial with Hindi Numeral Markings and metal indices around it. This is another hit amongst the coin dials.

Case: 43mm

Movement: Quartz

Crystal: Sapphire

Dial: One Paisa Galloping Horse Coin (1950-55)

Carbon Fibre with Hindi Numbers

Strap: Genuine Leather



INDIAN PEGASUS WATCH

Jaipur Watch Company has crafted a made-to-measure timepiece for His Highness Maharaja Gaj Singh which sums up to be our most memorable creation. This timepiece was infused with elements that essay the Maharaja's love for the royal equestrian sport of Polo. True to the unmatched polo tradition, Jaipur Watch Company's limited edition collection titled 'JWC Polo' embeds various elements of the equestrian sport. An amalgamation of royalty with the eagle (coat of arms) and the official polo emblem, these timepieces are crafted in Swiss Movement with a jump hour mechanism and water resistance. The first in this series 001 is a bespoke piece handcrafted for the royal His Highness as the purveyor of the royal sport in the region.

Case :- 43mm

Movement: Swiss Made ISA 2334 Movement

Crown :- Gold Plated/Stainless Steel

Bezel :-Inspired By Handcrafted Design

Dial :- Handcrafted Coat of Arms of

Jodhpur Royal Family in Sterling Silver

Strap :- Genuine Leather

Water Resistance :- 30 Meters (3ATM)



POLO WATCH

Filigree is a delicate embellishment in which skilled jewelers painstakingly solder fine, pliable threads of precious metal which are then twisted or curled into a beautiful artistic motif or design of the jewelry, or in this case, the '**Filigree Wristwear**'.

Case : 40mm Stainless Steel

Movement : Citizen Miyota

Back Cover : Embossed

Crown : Stainless Steel

Crystal : Sapphire

Bezel : Inspired by Coin Edge Design

Dial : King George VI One Anna Coin, Filigree Design

Strap : 18mm

Water Resistance : 5ATM



FILIGREE WATCH

These self-winding or automatic watches are crafted with Miyota 8215 Movement from Citizen and have a power reserve of 50 hours. The Timepiece houses a specially minted coin depicting Lord Ganesha on it's face.

Case: 46mm Stainless Steel

Movement: Automatic 8215 Citizen Miyota

Crown: Ruby Stone on the Crown

Crystal: Front and Back Sapphire

Bezel: Inspired by Hand Crafted Design

Dial: Specially minted Lord Ganesha Coin

Strap: Genuine Leather, Butterfly Clasp

Power Reserve: 50 Hours

Water Resistance: 50 Metres (5 ATM)



GANESHA COIN WATCH

These self-winding or automatic watches are crafted with Miyota 8215 Movement from Citizen and have a power reserve of 50 hours. The Timepiece houses a specially minted coin depicting Delhi Golf Club.

Case: 46mm Stainless Steel

Movement: Automatic 8215 Citizen Miyota

Crown: Emerald Stone on the Crown

Crystal: Front and Back Sapphire

Bezel: Inspired by Hand Crafted Design

Dial: Specially minted coin for Delhi Golf Club

Strap: Genuine Leather, Butterfly Clasp

Power Reserve: 50 Hours

Water Resistance: 50 Metres (5 ATM)



DELHI GOLF CLUB WRISTWEAR

These self-winding or automatic watches are crafted with Miyota 8215 Movement from Citizen and have a power reserve of 50 hours. The Timepiece houses a specially minted coin depicting Lord Hanuman on it's face.

Case: 46mm Stainless Steel

Movement: Automatic 8215 Citizen Miyota

Crown: Ruby Stone on the Crown

Crystal: Front and Back Sapphire

Bezel: Inspired by Hand Crafted Design

Dial: Specially minted Lord Hanuman Coin

Strap: Genuine Leather, Butterfly Clasp

Power Reserve: 50 Hours

Water Resistance: 50 Metres (5 ATM)



HANUMAN COIN WATCH

Unlike the traditional watch, where the hour hand sweeps the dial, this distinctive creation has a disc behind a tiny window on the dial that 'jumps' to indicate the hour accurately when the minute hand touches 12 (60 minutes). It has one long hand that sweeps the dial indicating the minutes and a sub dial displaying a tiny second hand. This mechanism is based on a modified automatic movement. This elegant timepiece with a 316L Steel case, curved dial, recessed subdial, special floating lugs and a 'quick-release' strap.

Case : 46mm / 40mm 316L Steel

Movement : TY 2709 (Modified)

Back Cover : Embossed Back

Crown : Stainless Steel

Crystal : Sapphire

Bezel : Inspired by Handcrafted Design

Dial : Curved Enameled Blue Dial with Hour Window

Features : Recessed Subdial, Special Floating Lugs

Strap : 24mm / 18mm

Water Resistance : 5ATM

Power Reserve : 42 Hours



JUMPING HOUR WATCH

*“The horology and mechanical
precision of a timepiece is as significant
as the way it is presented, hence,
the mesmerizing, hand-painted series”*

Gaurav Mehta



